

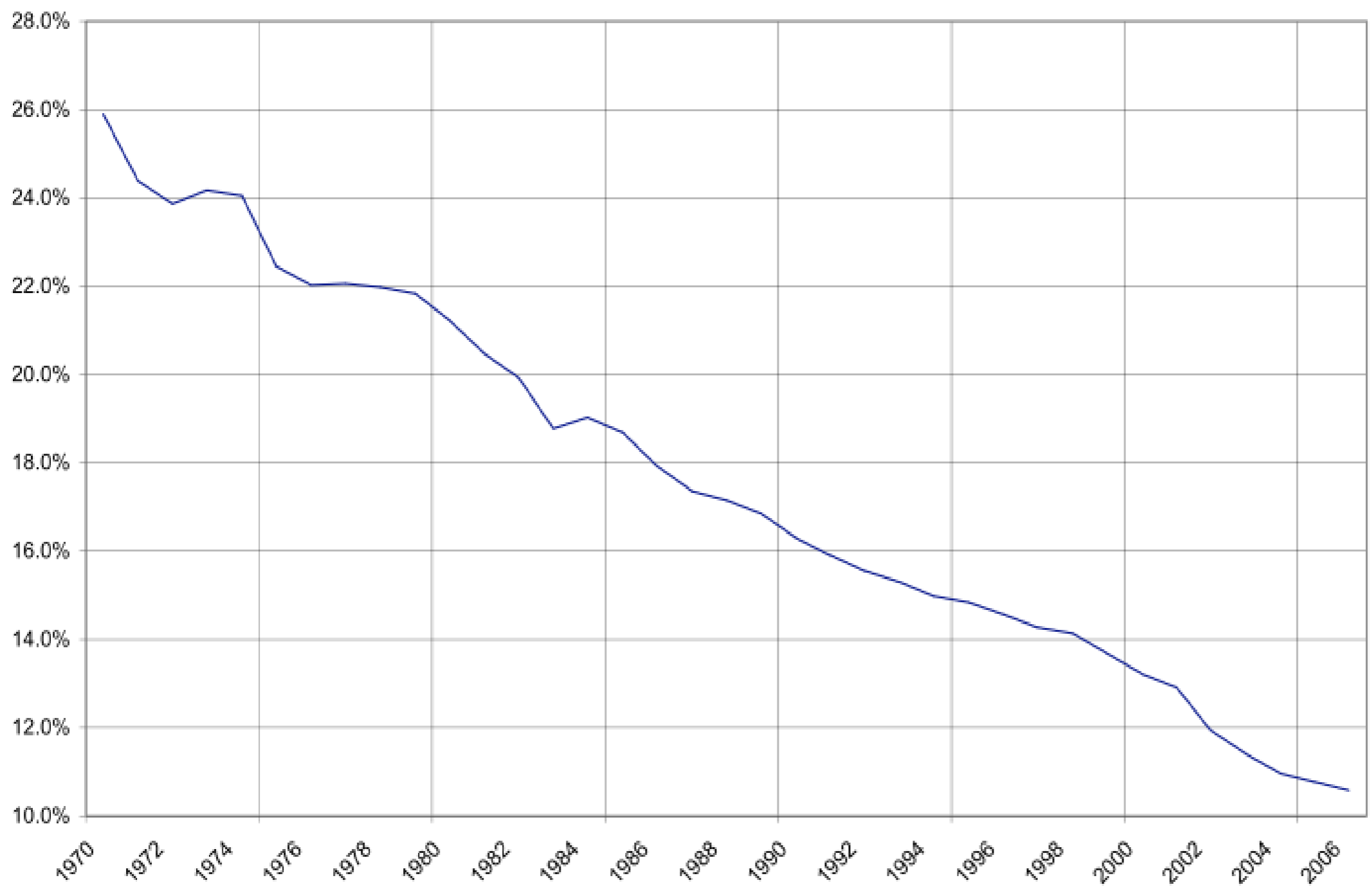
*Work and Workers in the
Twenty-First Century*

by Bruce E. Parry & Lenny Brody

Revolution and Reform . Wordpress.com

Chart 1

U.S. Manufacturing as Percent of All Employment



Source: U.S. Department of Labor, Bureau of Labor Statistics
C:\Documents and Settings\Bruce Parry\My Documents\~Current Writing\BLS Data.xls

Chart 2: U.S. Labor Force Participation Rate (LFPR)

Jan 2000 to Jan 2010

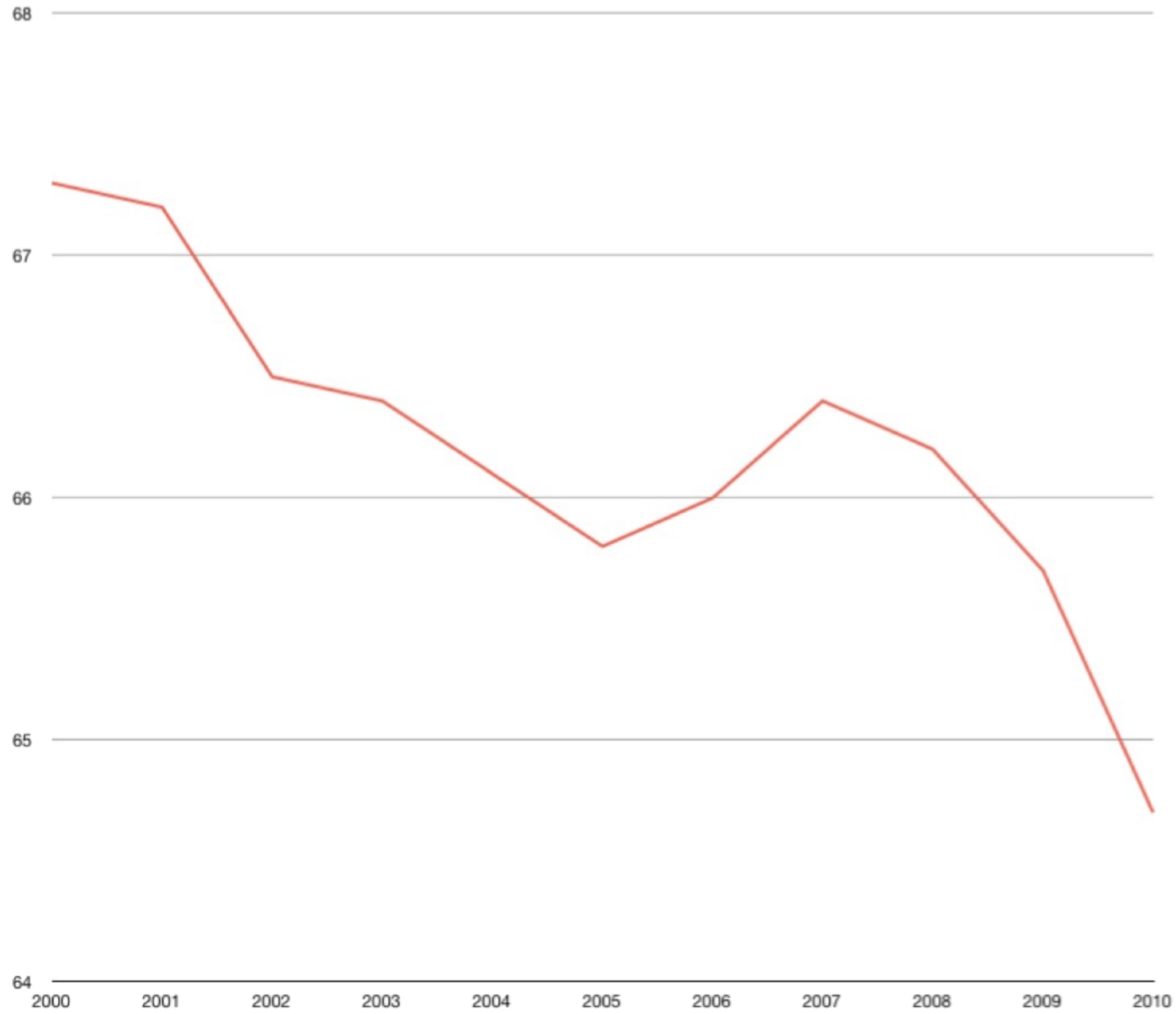
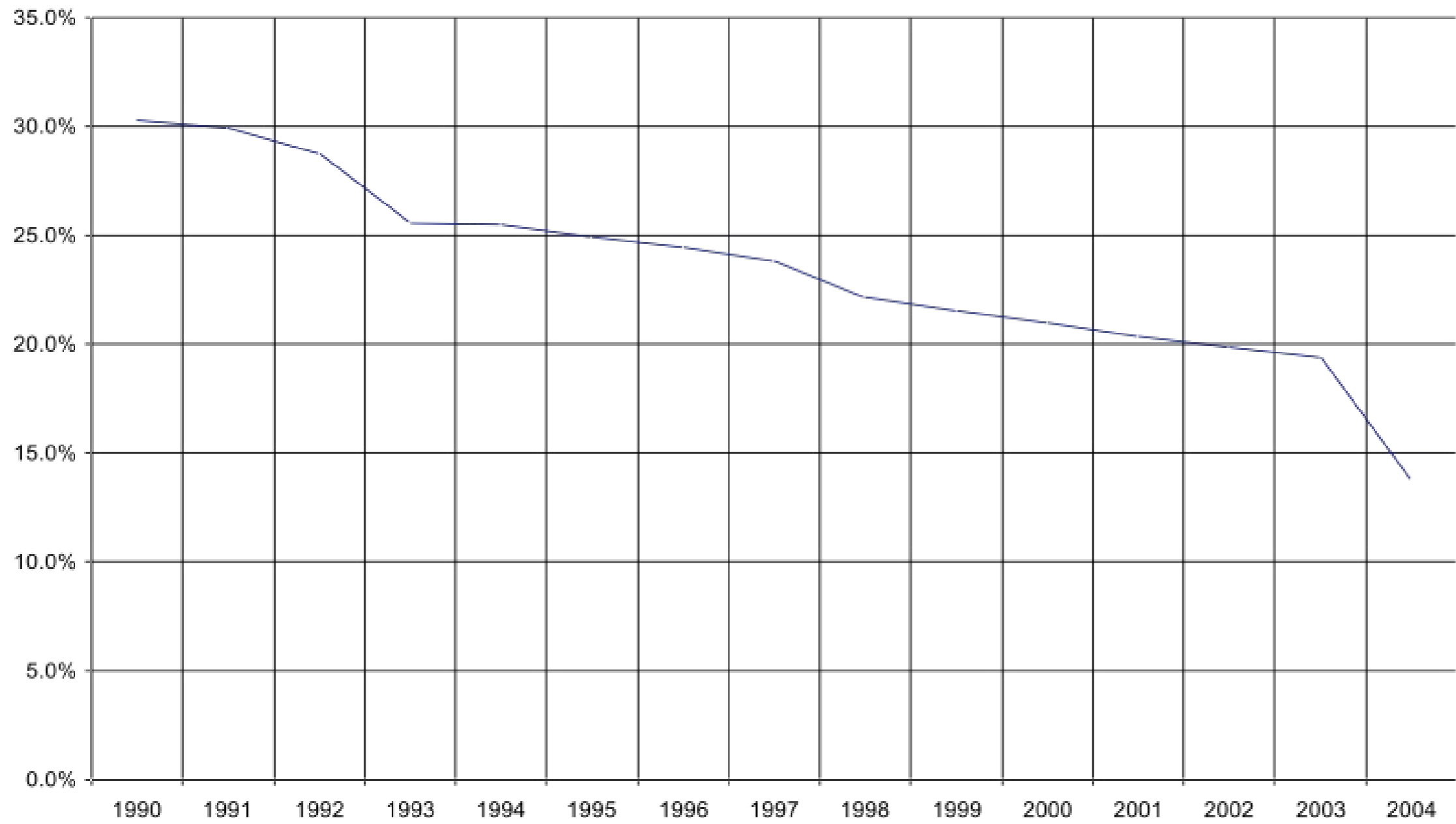


Chart 3

Major Country Manufacturing Percent of Total employment

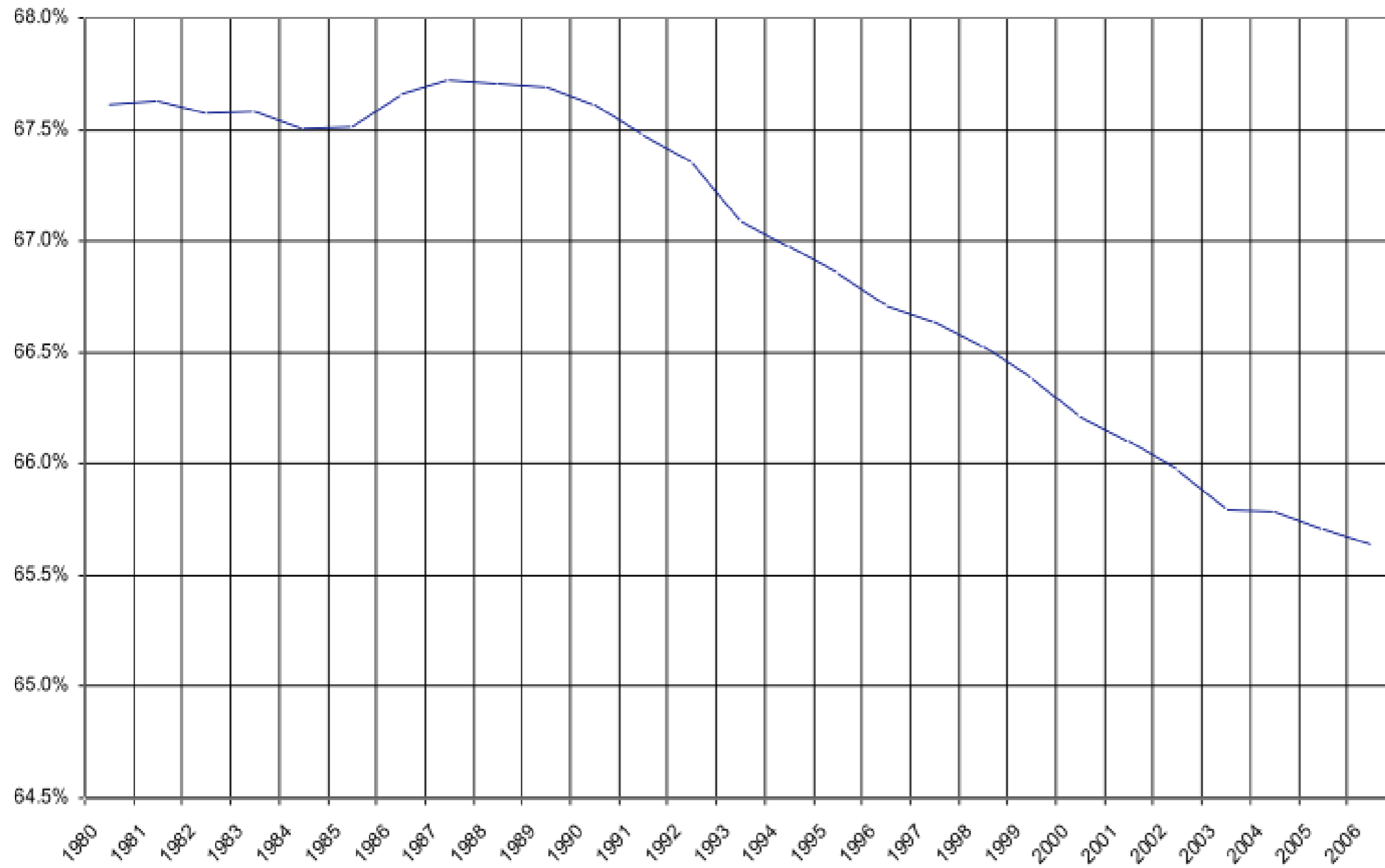


Included countries: Canada, Israel, Argentina, Australia, Brazil, China, Czech Republic, Egypt, France, Germany, India, Japan, Korea, Republic of, Mexico, Philippines, Poland, Russian Federation, South Africa, Turkey, Ukraine, United Kingdom, United States, USSR

Source: International Labour Organization, LABORSTA Internet [<http://laborsta.ilo.org/>]
C:\Documents and Settings\Bruce Parry\My Documents\~Current Writing\Major Country analysis 1.xls

Chart 4

ILO Estimates and Projections for the World Labor Force Participation Rate (LFPR)

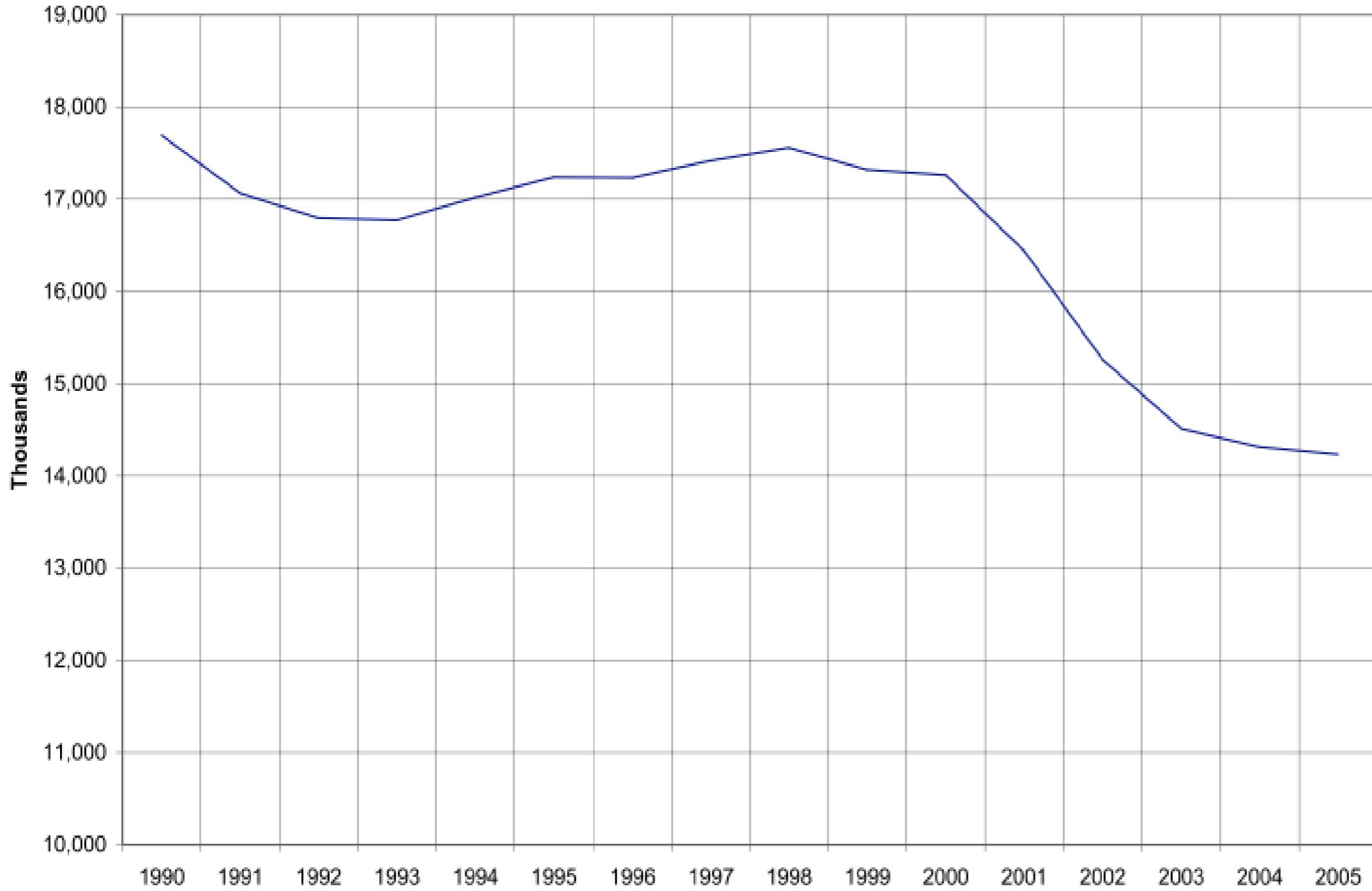


Source: International Labour Organization, LABORSTA Internet [<http://laborsta.ilo.org/>]

C:\Documents and Settings\Bruce Parry\My Documents\~Current Writing\Economically Active Population-World.xls

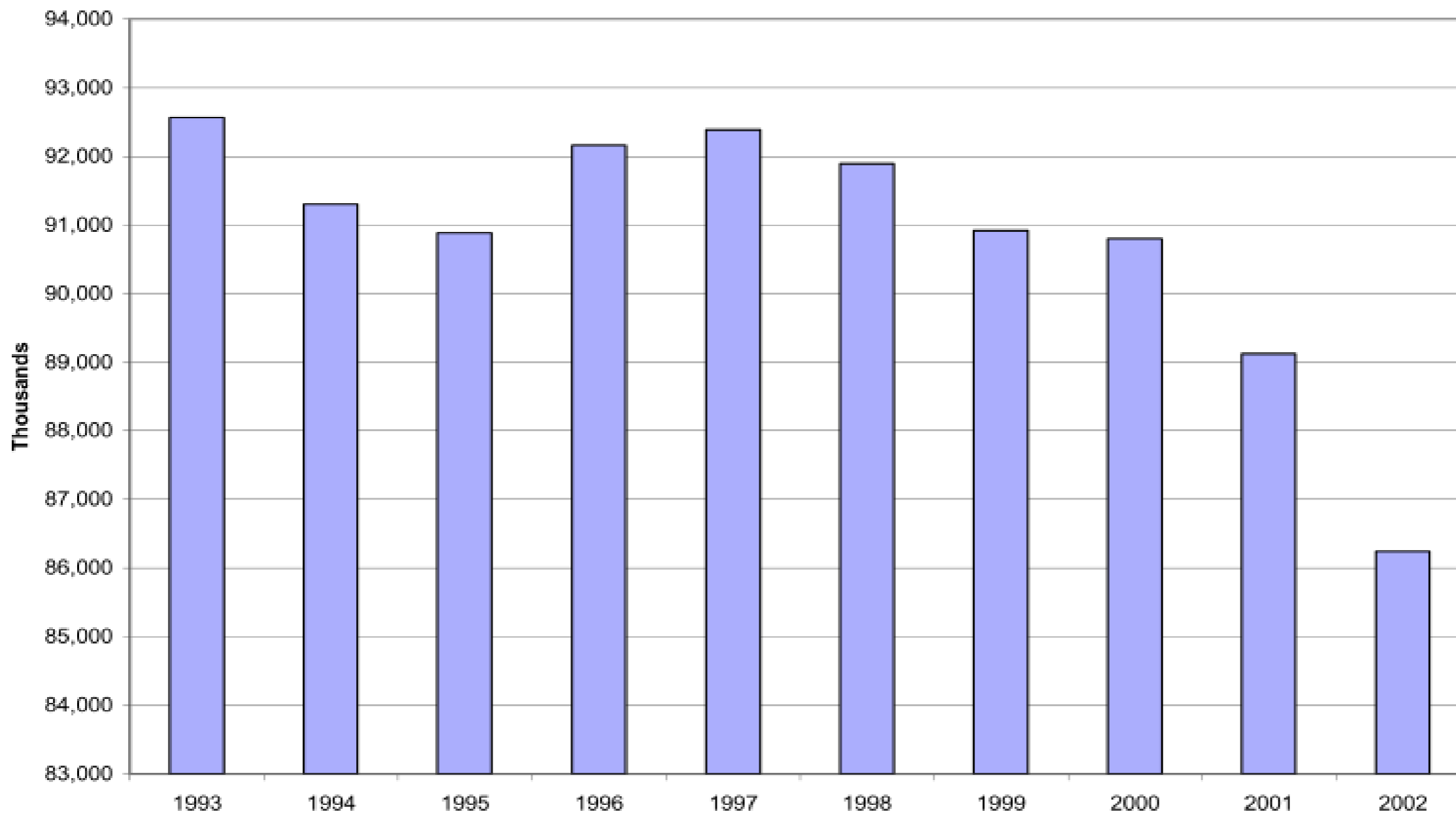
Chart 5

U.S. Manufacturing Employment



Source: U.S. Department of Labor, Bureau of Labor Statistics

C:\Documents and Settings\Bruce Parry\My Documents\~Current Writing\BLS Manufacturing Data.xls

Chart 9**Manufacturing Employment - Major Countries Without China 1993-2002**

Countries included: Argentina, Australia, Austria, Belgium, Brazil, Canada, Czech Republic, Denmark, Egypt, Finland, France, Greece, Hungary, India, Indonesia, Ireland, Israel, Italy, Japan, Luxembourg, Mexico, Netherlands, Norway, Philippines, Poland, Portugal, Slovak Republic, South Africa, South Korea, Spain, Sweden, Taiwan, Turkey, Ukraine, Unified Germany, United Kingdom, United States

Source: International Labour Organization, LABORSTA Internet [<http://laborsta.ilo.org/>] and Organization for Economic Co-operation and Development, OECD Statistics [<http://stats.oecd.org/WBOS/>]

C:\Documents and Settings\Bruce Parry\My Documents\~Current Writing\~Working Files\Expanded Data Country Analysis.xls

Chart 10: Manufacturing Employment 2004-2008

