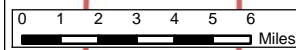
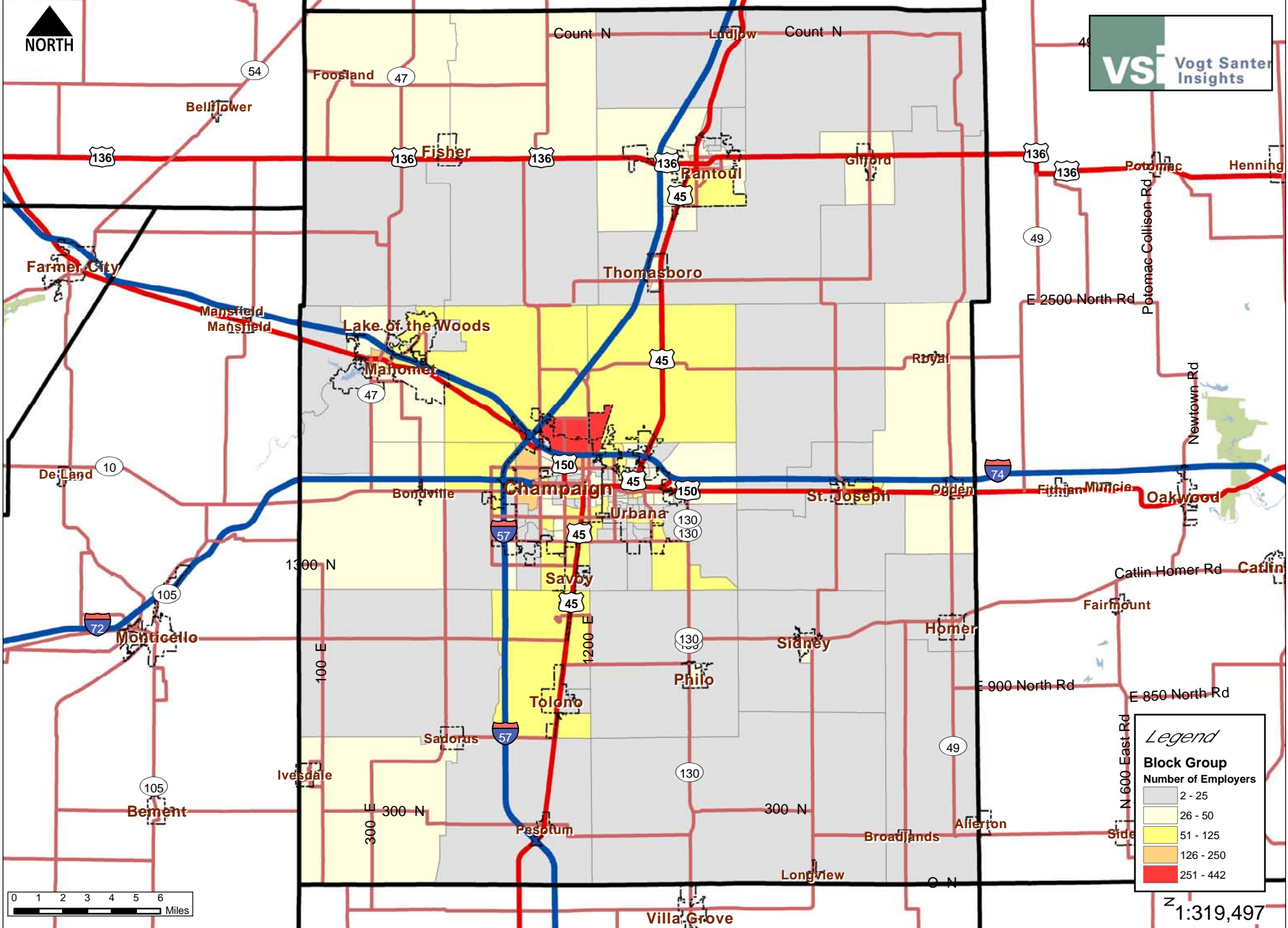


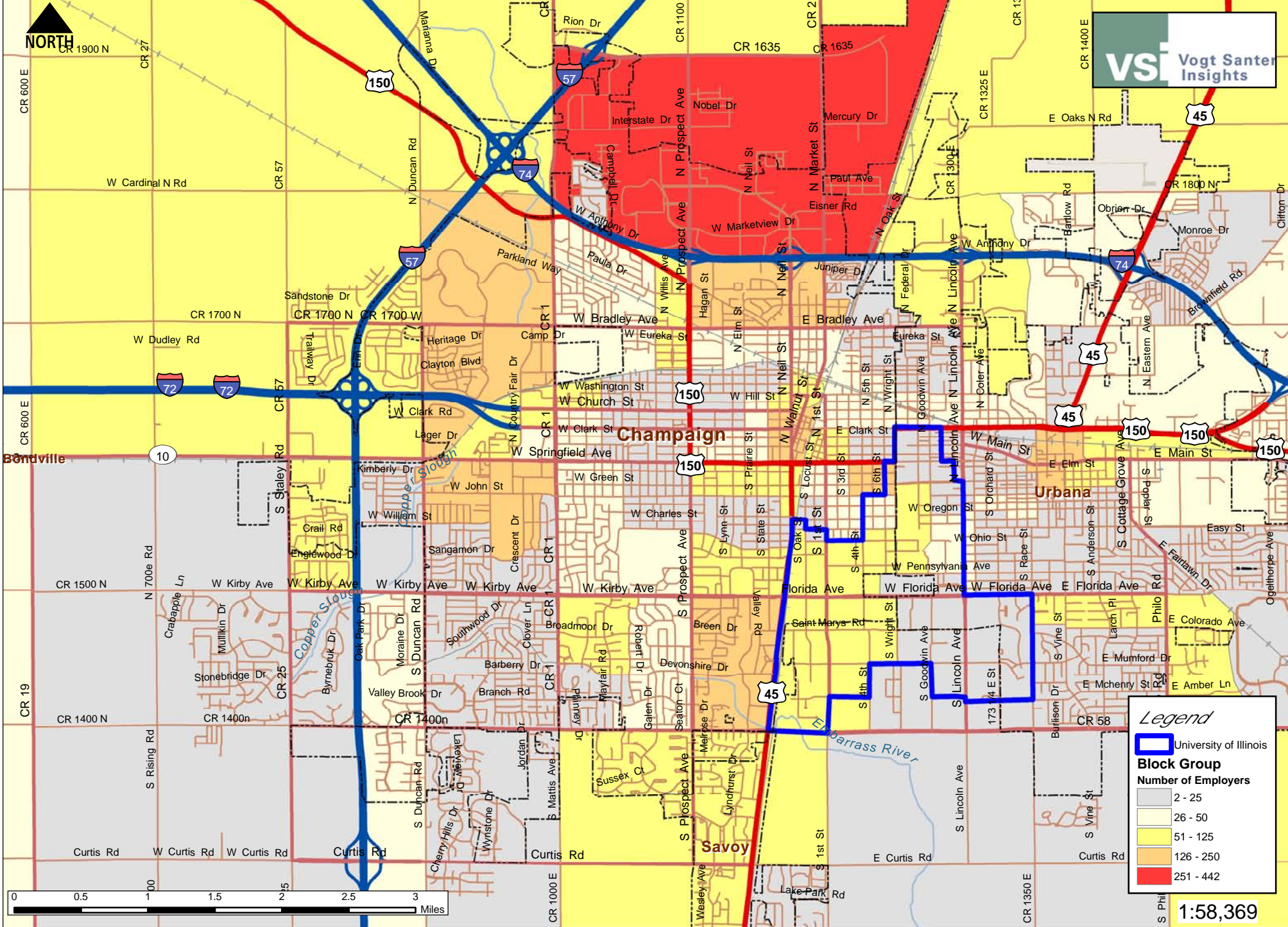
Champaign County, IL: Employment - Number of Employers



1:319,497

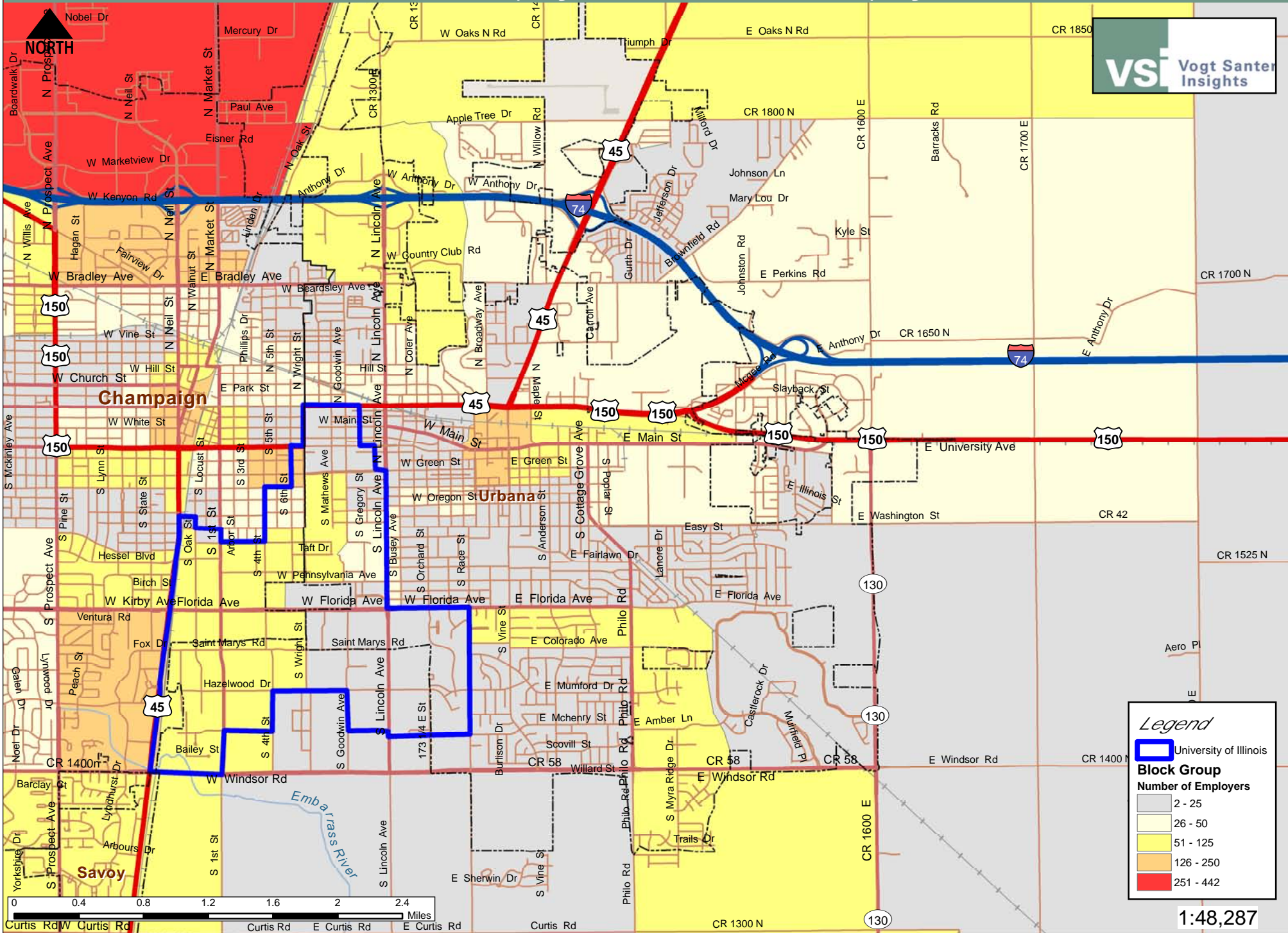
Champaign, IL: Employment - Number of Employers

vsi Vogt Santer
Insights



1:58,369

Urbana, IL: Employment - Number of Employers



Legend

University of Illinois

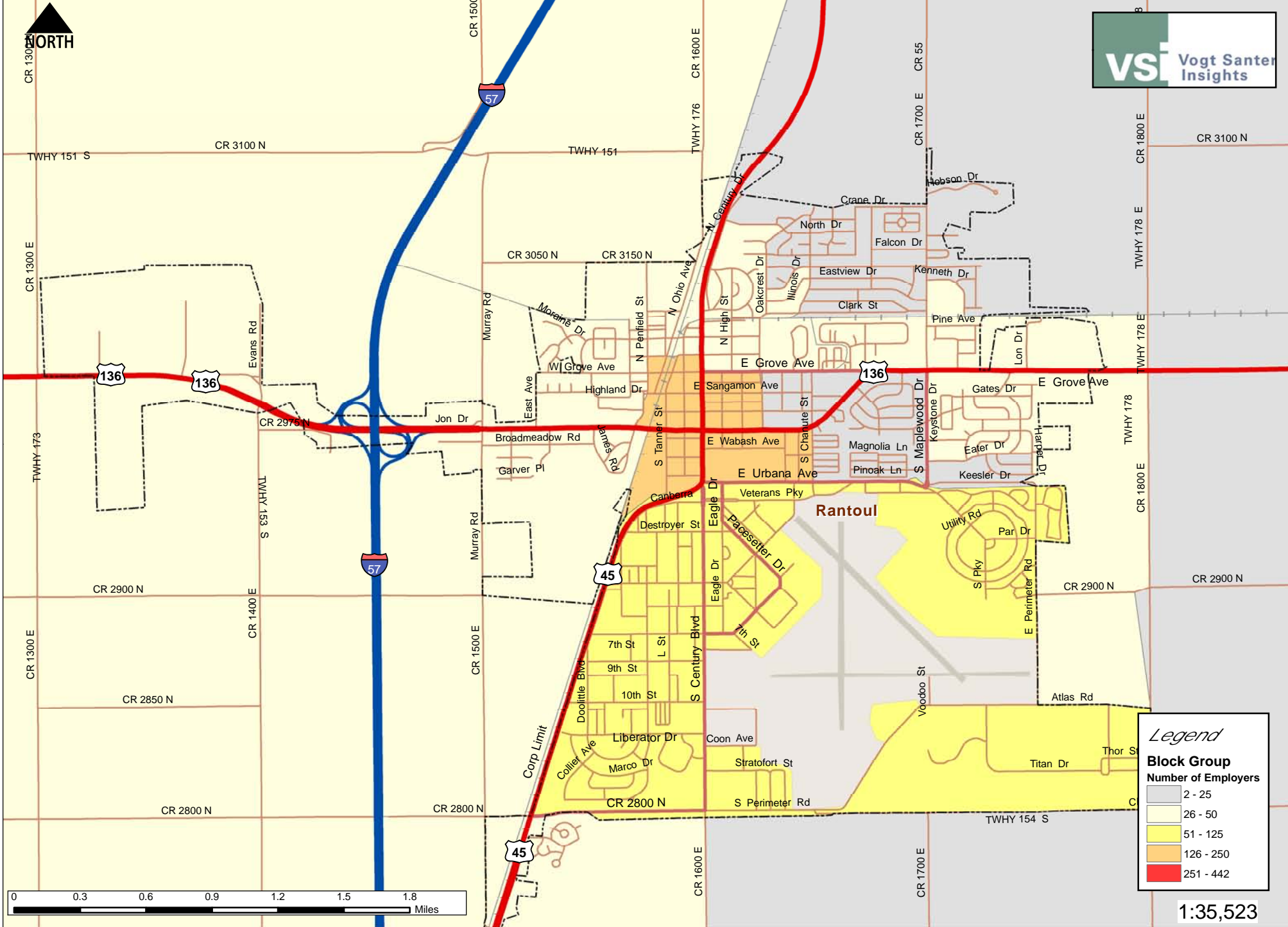
Block Group

Number of Employers

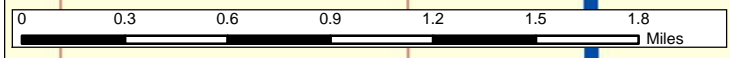
- 2 - 25
- 26 - 50
- 51 - 125
- 126 - 250
- 251 - 442

1:48,287

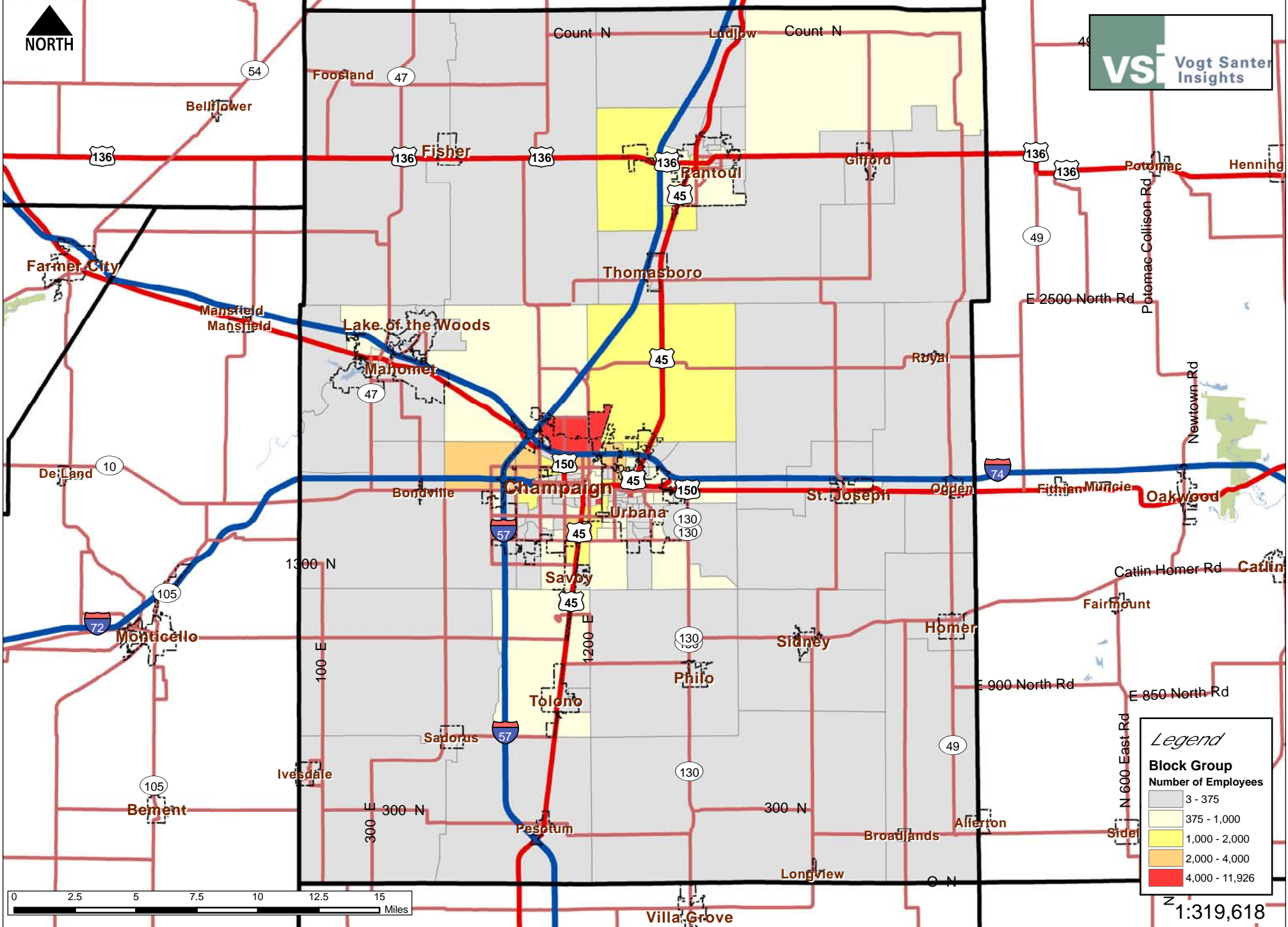
Rantoul, IL: Employment - Number of Employers



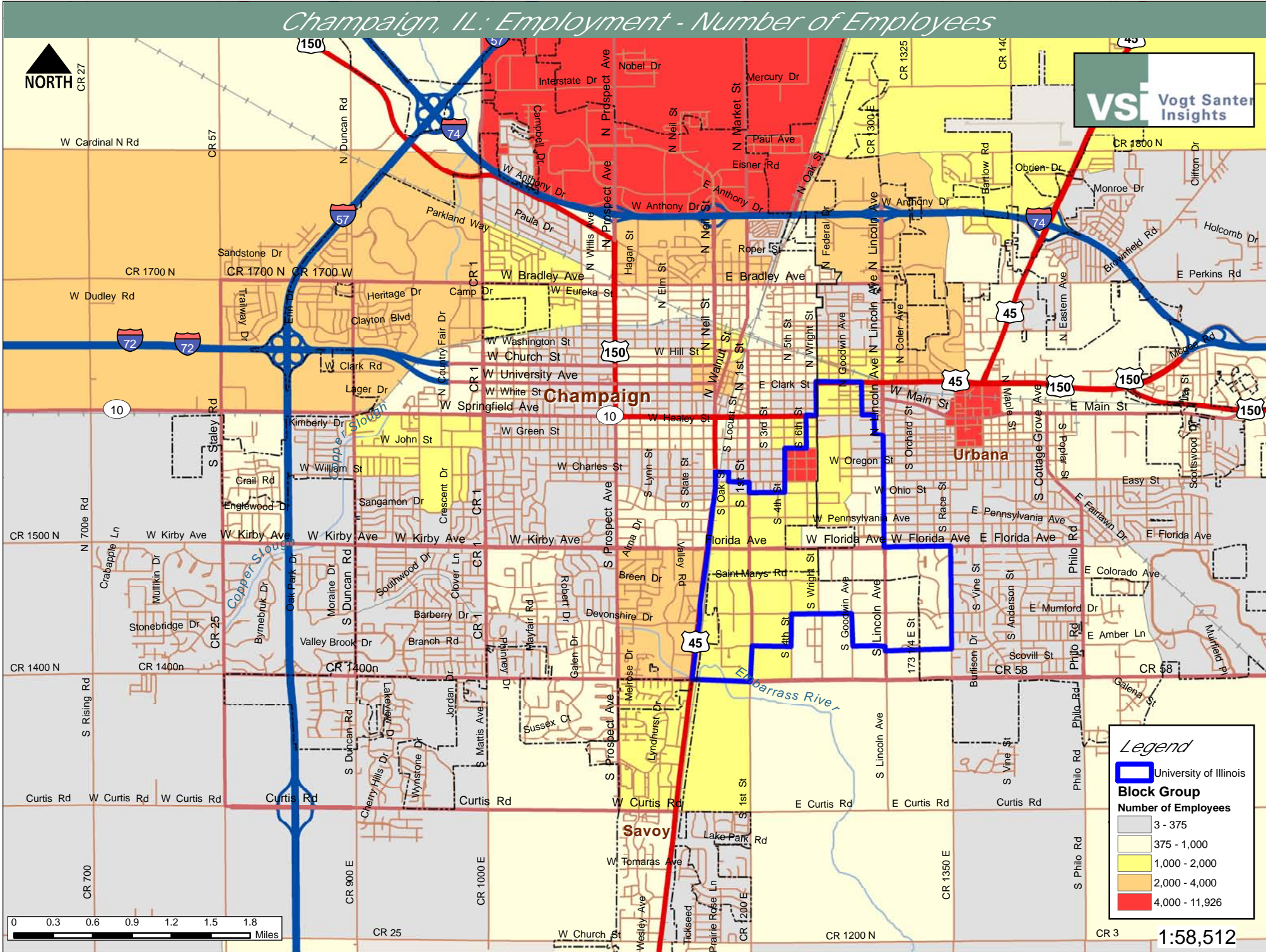
1:35,523



Champaign County, IL: Employment - Number of Employees



Champaign, IL: Employment - Number of Employees



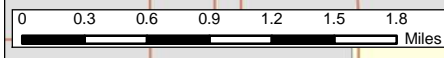
Legend

University of Illinois

Block Group

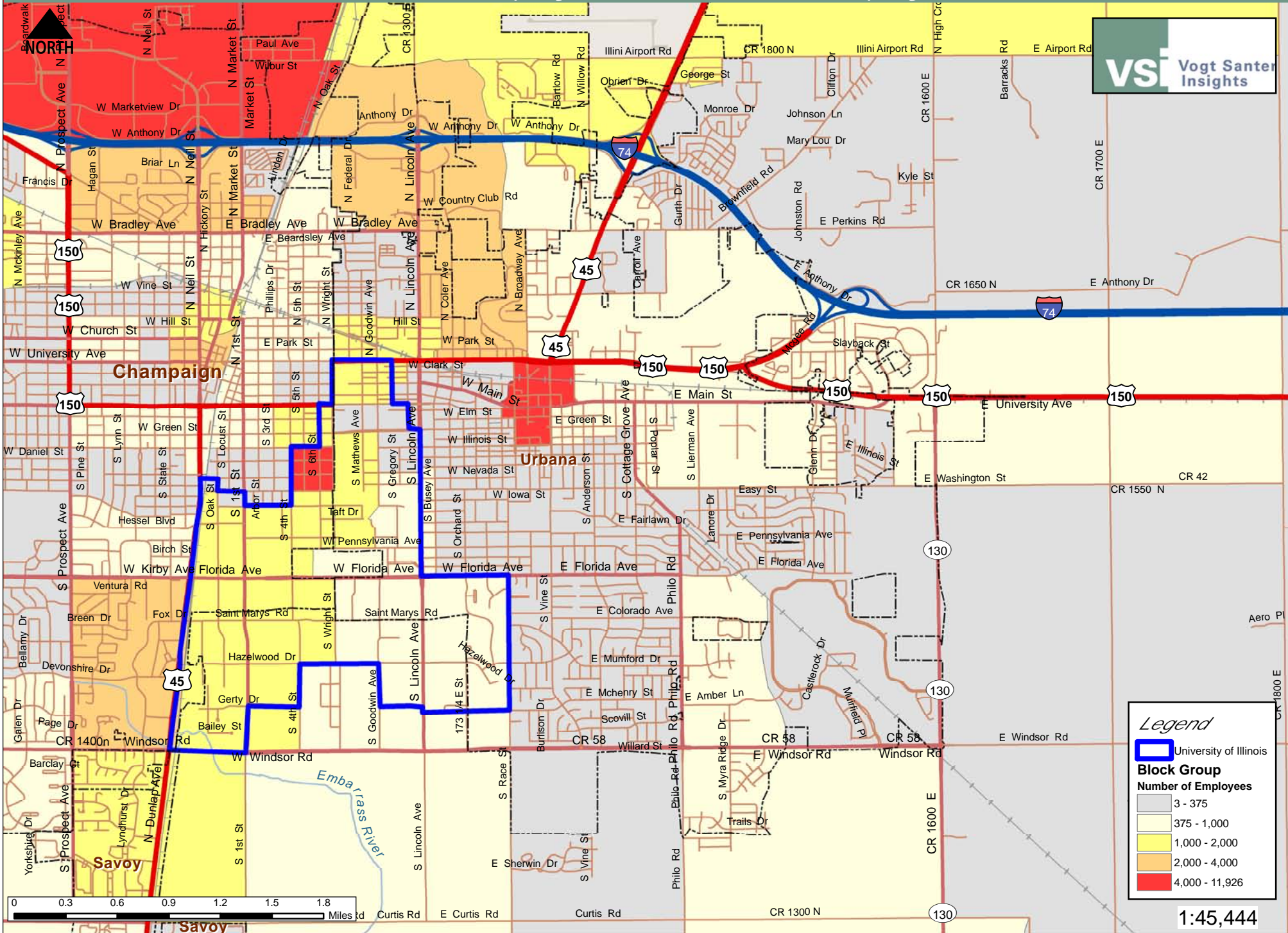
Number of Employees

	3 - 375
	375 - 1,000
	1,000 - 2,000
	2,000 - 4,000
	4,000 - 11,926



1:58,512

Urbana, IL: Employment - Number of Employees



Legend

University of Illinois

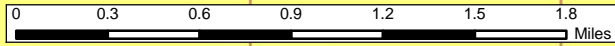
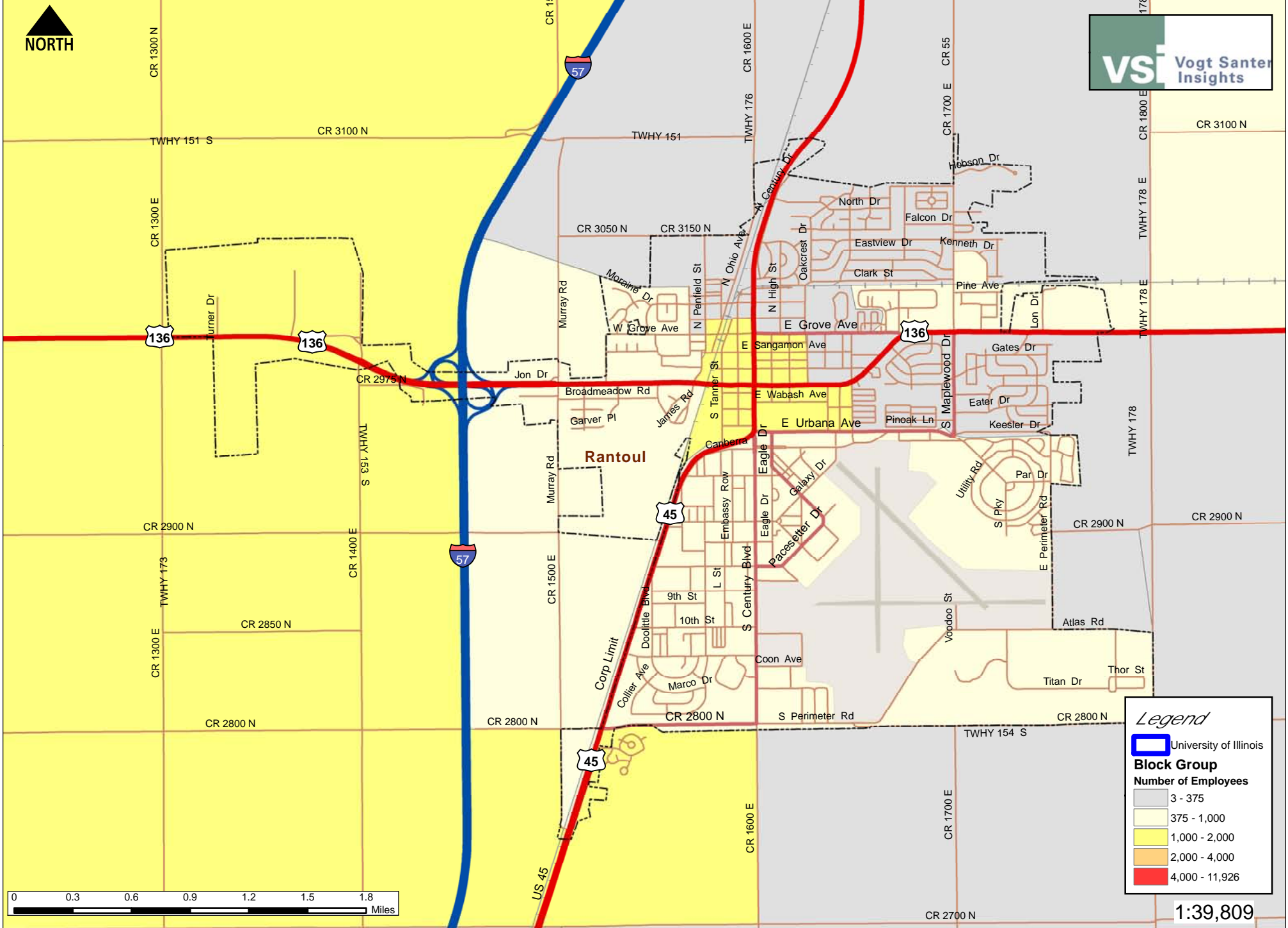
Block Group

Number of Employees

- 3 - 375
- 375 - 1,000
- 1,000 - 2,000
- 2,000 - 4,000
- 4,000 - 11,926

1:45,444

Rantoul, IL: Employment - Number of Employees

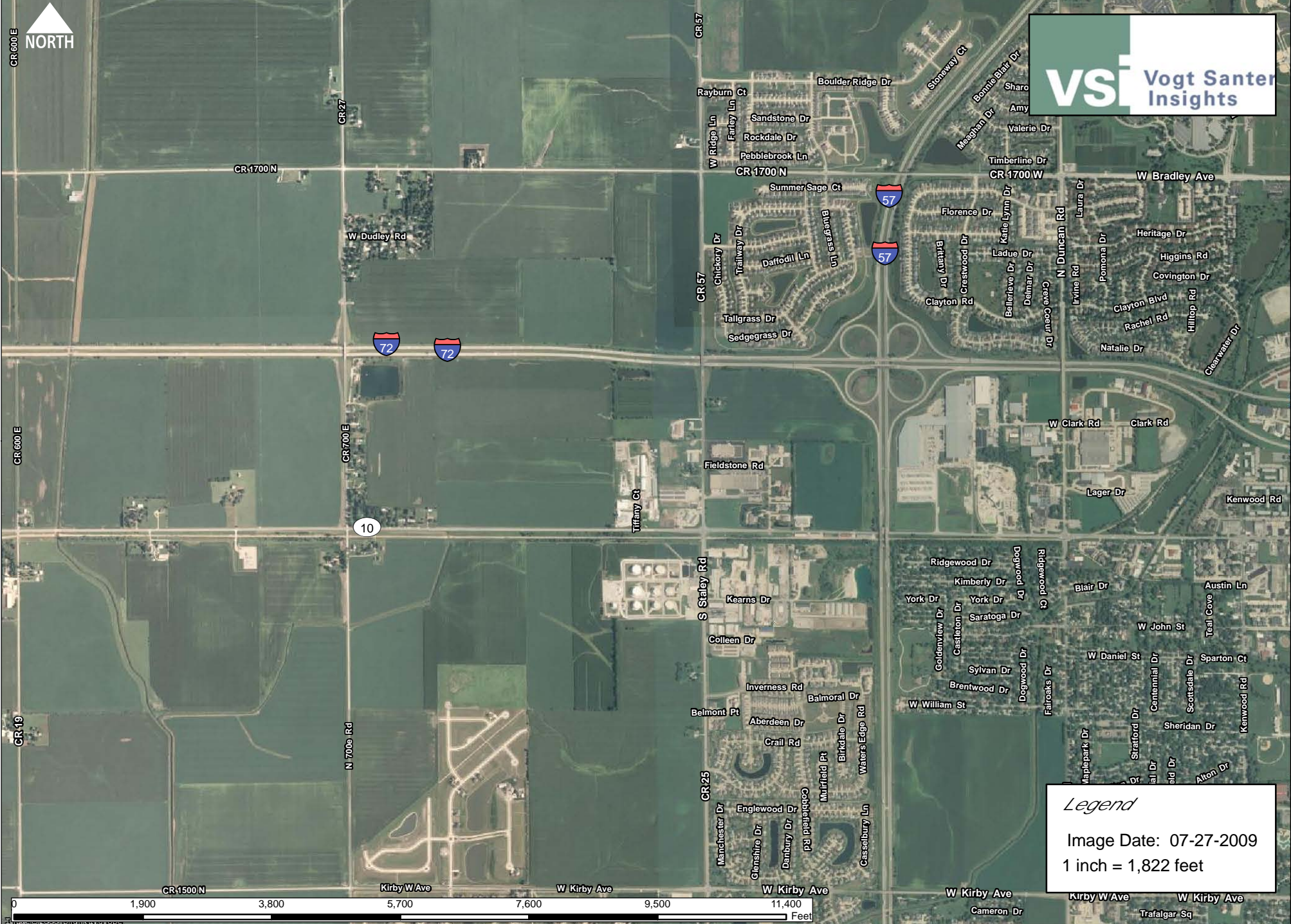


1:39,809

Aerial Maps

The set of maps in this analysis is comprised of aerial views of the more populated portions of the county. These maps are helpful when viewed in conjunction with the preceding maps. They help provide a perspective that can often get lost when viewing thematic maps. All of the aeriels used were provided by DigiGlobe and each image was taken on July 27, 2009.

Champaign, IL (northwest): Aerial View



VSI Vogt Santer
Insights

Legend
Image Date: 07-27-2009
1 inch = 1,822 feet

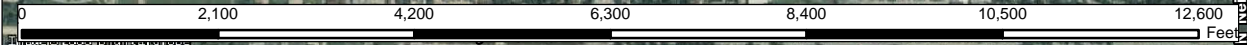
Champaign, IL (north): Aerial View



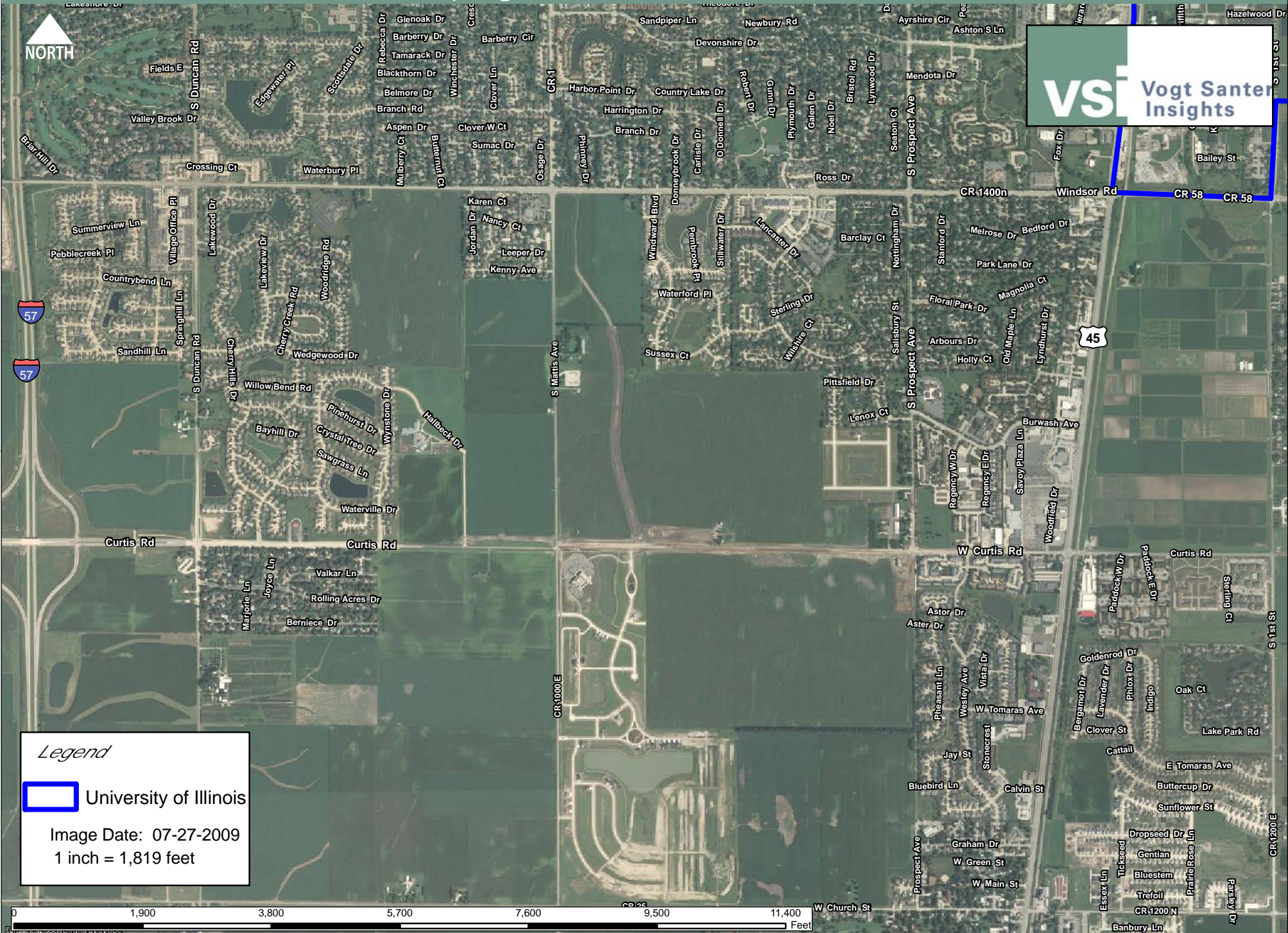
NORTH



Legend
Image Date: 07-27-2009
1 inch = 2,055 feet



Champaign, IL (south): Aerial View

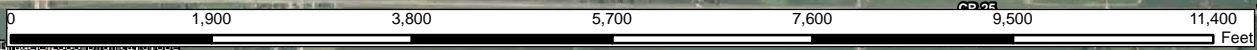


Legend

University of Illinois

Image Date: 07-27-2009

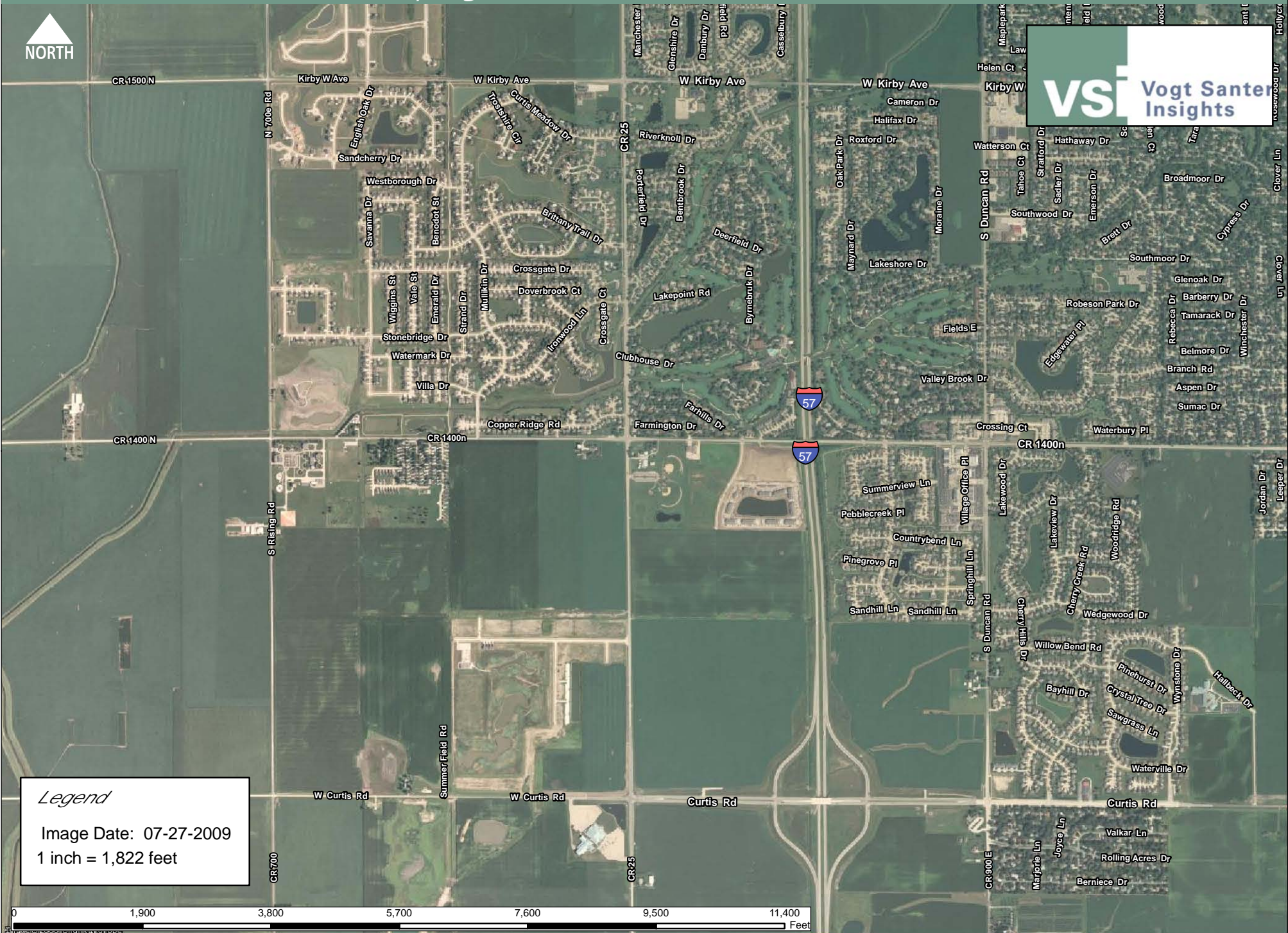
1 inch = 1,819 feet



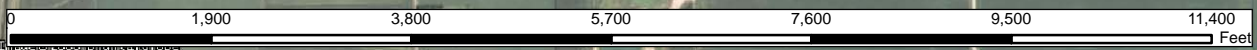
Champaign, IL (southwest): Aerial View



NORTH



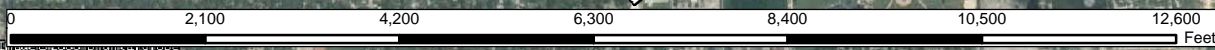
Legend
Image Date: 07-27-2009
1 inch = 1,822 feet



Urbana, IL (north): Aerial View



NORTH



Legend
Image Date: 07-27-2009
1 inch = 2,075 feet

Urbana, IL (east): Aerial View

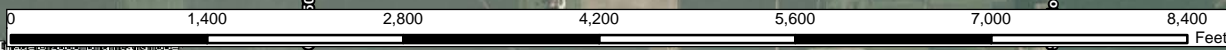


Legend
 Image Date: 07-27-2009
 1 inch = 1,370 feet

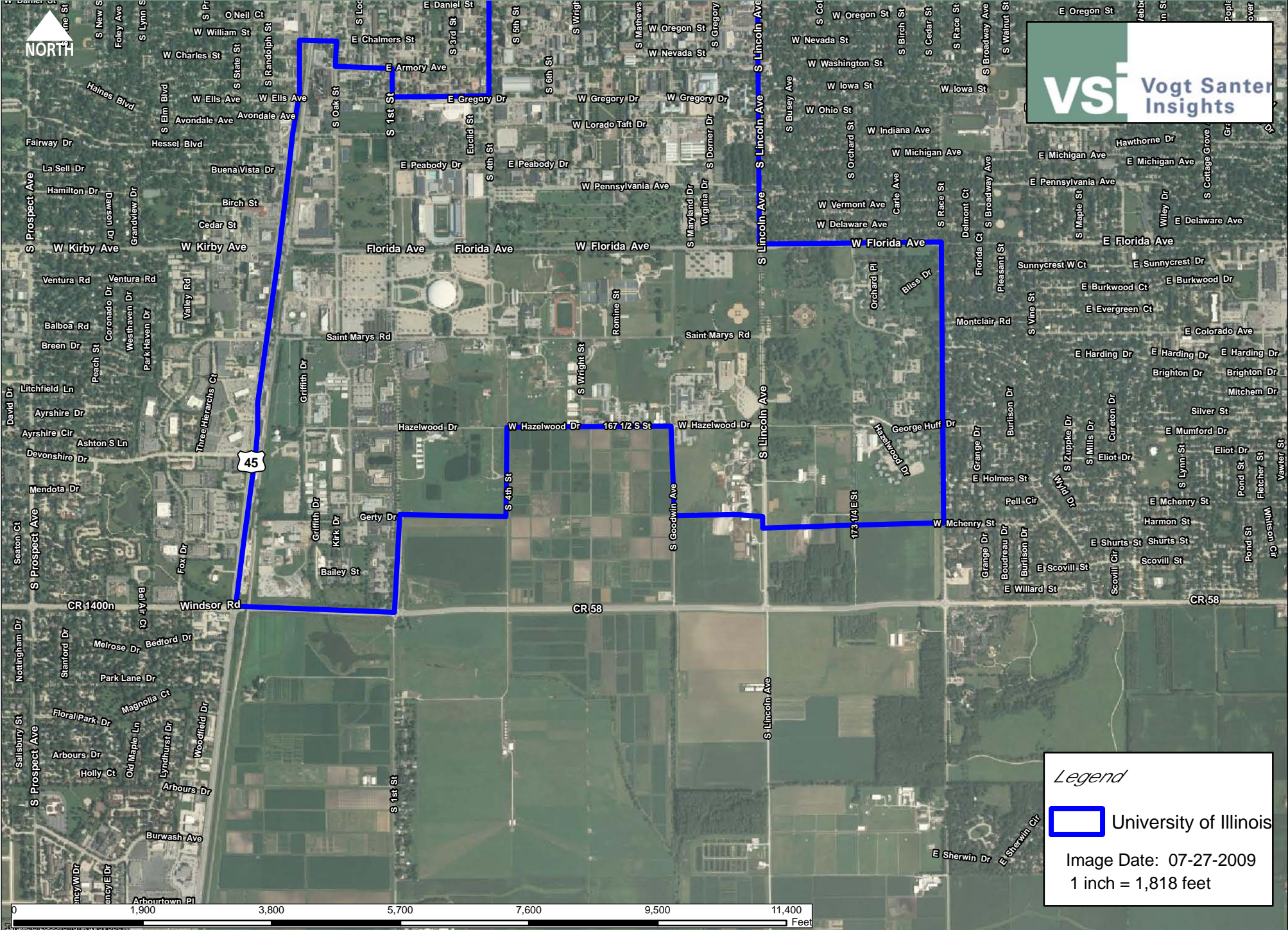
Urbana, IL (south): Aerial View



Legend
Image Date: 07-27-2009
1 inch = 1,370 feet



Champaign-Urbana, IL (south): Aerial View



VSI Vogt Santer
Insights

Legend

University of Illinois

Image Date: 07-27-2009
1 inch = 1,818 feet

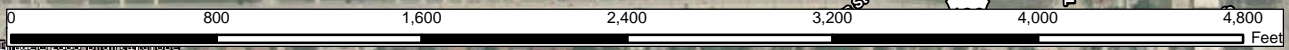
Rantoul, IL (northwest): Aerial View



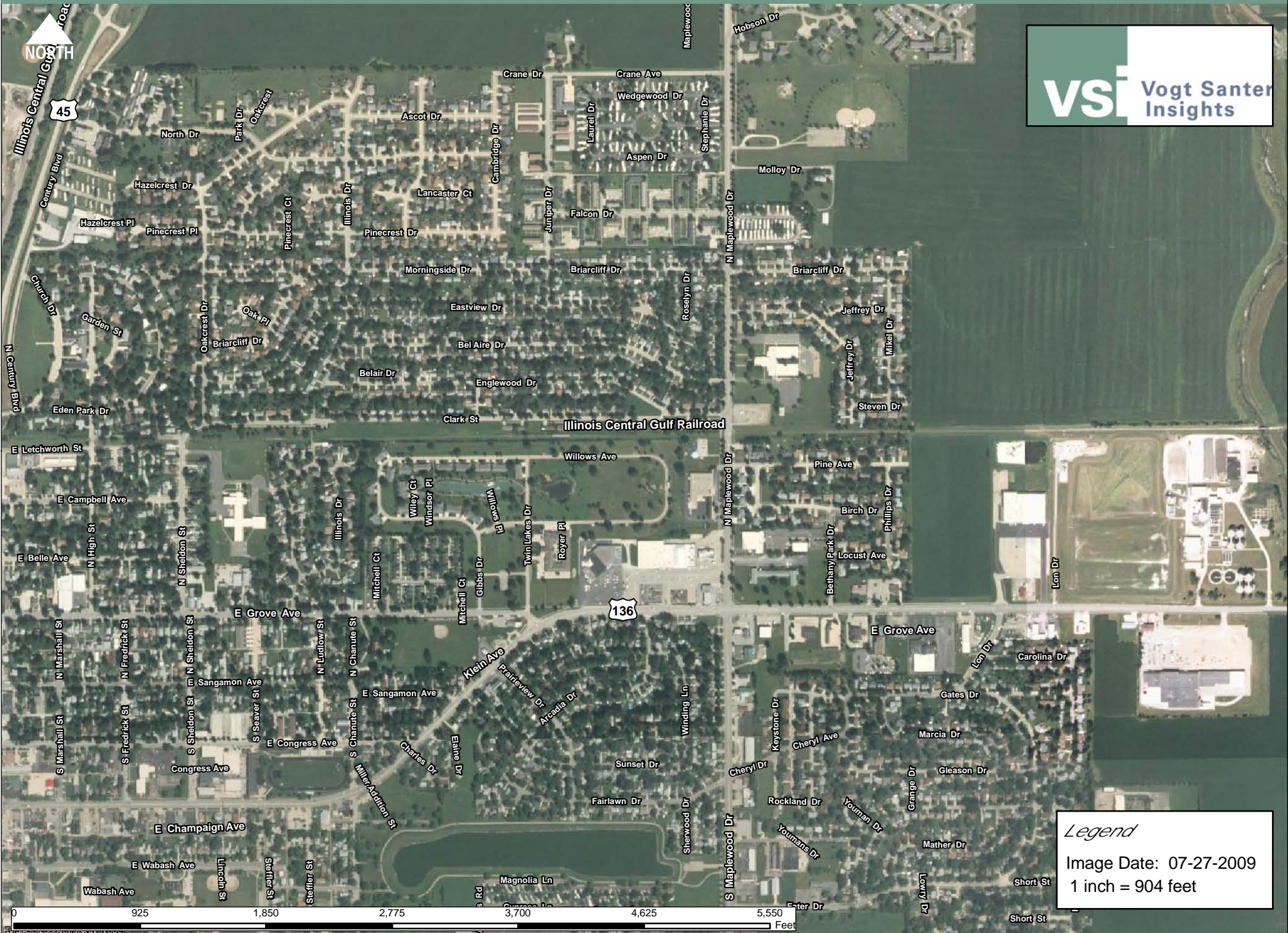
NORTH



Legend
Image Date: 07-27-2009
1 inch = 748 feet



Rantoul, IL (northeast): Aerial View



Rantoul, IL (south): Aerial View

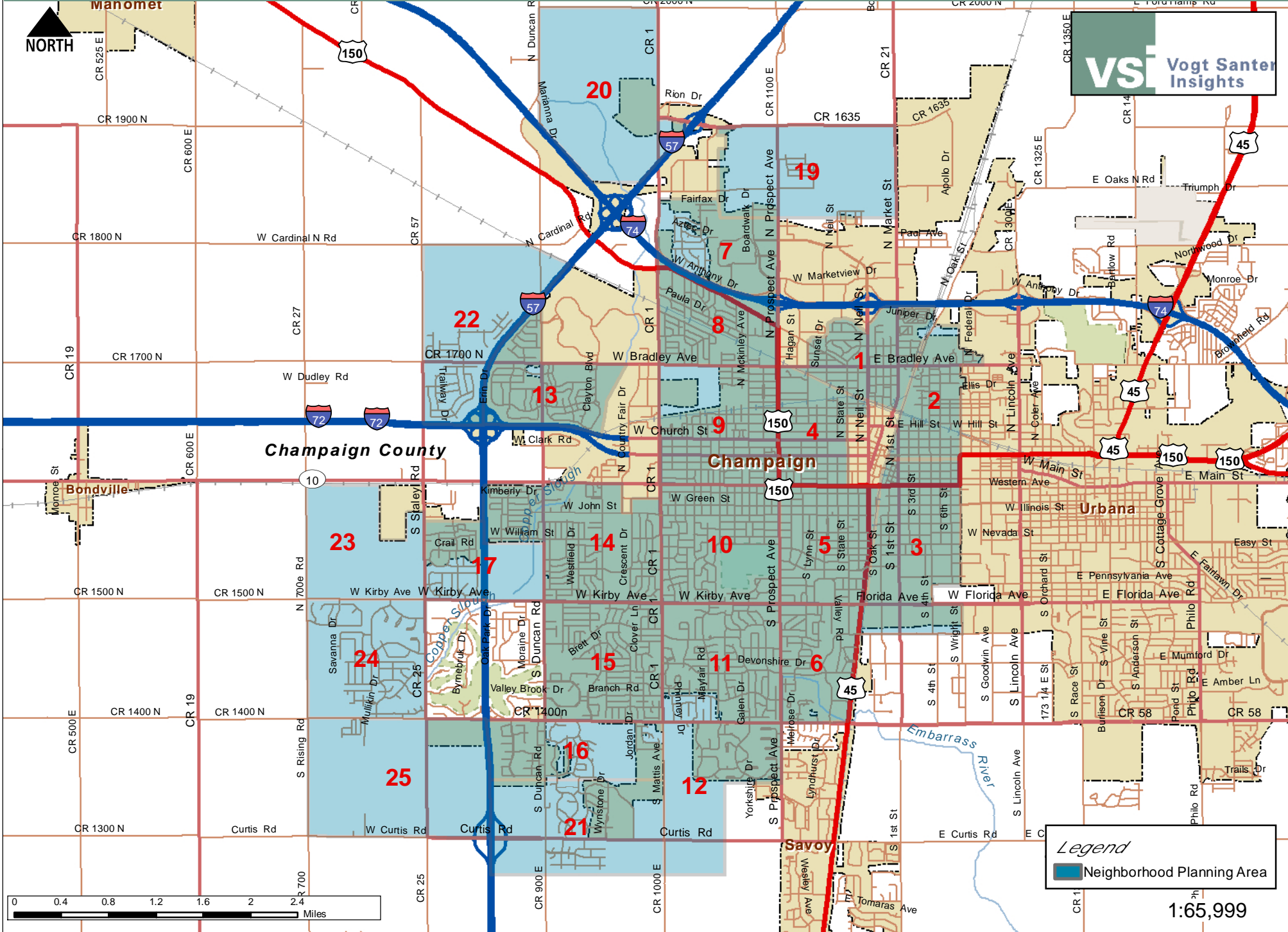


Legend
 Image Date: 07-27-2009
 1 inch = 1,439 feet

Cities of Champaign and Urban Sub-areas

The City of Champaign and the City of Urbana have divided their respective municipalities into smaller geographies. In the City of Champaign, these are known as Neighborhood Planning Areas and cover the entire city. A map of these areas can be found on Page D-102 and demographic information for each is located on Pages G-23 through G-192. In the City of Urbana, these smaller geographies are known as Community Development Target Area. A map of these areas can be found on page D-103 and demographic information for each is located on Pages G-193 through G-220.

City of Champaign, IL: Neighborhood Planning Areas



Champaign County

Champaign

Urbana

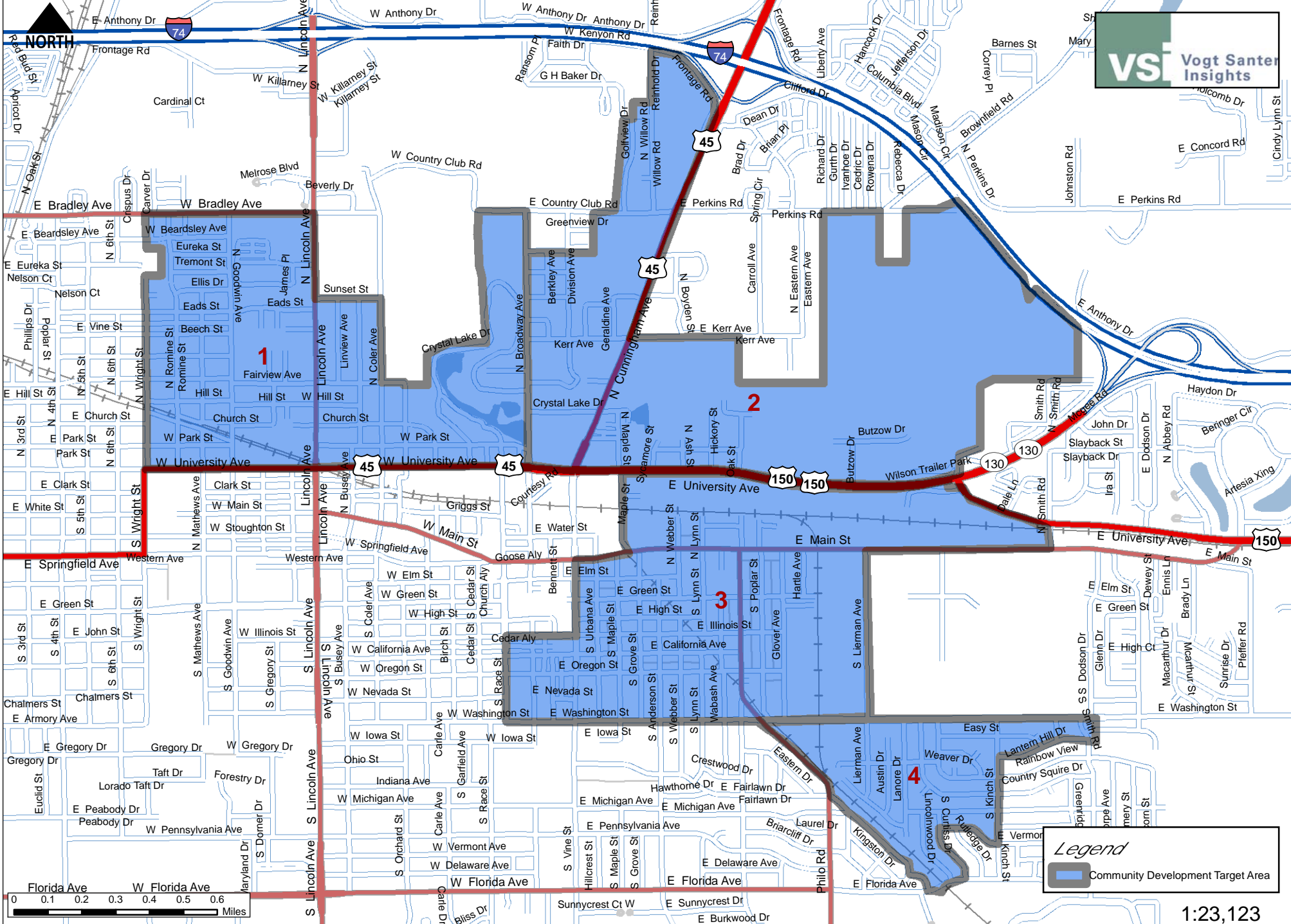
Savoy

Legend
■ Neighborhood Planning Area



1:65,999

City of Urbana, IL: Community Development Target Areas



Legend

- Community Development Target Area

1:23,123