

Qty

Note:



A
L
S
©
1957

The 1957 Rosemary Staff
of
Urbana High School



The 1957
Rosemary

URBANA FREE LIBRARY

"There's Rosemary
 7-93 50.00

A
 ILLINOIS
 (Champ)
 URB

"That's for Remembrance"
 --Shakespeare

Foreword

Meet Maestro Anabru. This lovable character will be your conductor for this symphony of memories. Now without further introduction, the maestro strides to the podium, the lights dim, and the music swells as the "'57 Symphony" makes its debut.



1957

Rosemary Staff

<i>Editor-in-Chief</i>	Robert Hindsley
<i>Literary Editor</i>	Elizabeth Roberts
<i>Senior Editor</i>	Bette Freeman
<i>Underclassmen Editor</i>	Susan Mitchell
<i>Activities Editor</i>	Ruth Ann Douglas
<i>Sports Editor</i>	Charles Lewis
<i>High Lights Editor</i>	Virginia Trotter
<i>Co-Art Editors</i>	Chris Moyer Don Williamson
<i>Co-Business Managers</i>	Nancy Derrough Carolyn Watson
<i>Ad Manager</i>	Dorothy Hubbard
<i>Assistant Ad Manager</i>	Ruth Baker
<i>Ad Staff</i>	Linda Creamer, Ronnie DuFrane, Barbara Hermling, Joyce Porter
<i>Ad Tryouts</i> —Eileen Bourgois, Susan Gilbert, Barbara Harrington, Judy Irlle, Kayri Langhaar, Pat Scott, Pegeen Linn, Victor Lukas, Janice Mackey, Mary Ann Mayhood, Linda Plankenhorn, Susan White, Sharry Sarginson	
<i>Advisor</i>	Miss Dorothy Finger



Photography Pilon's Studio, Al Daniels' Studio
 Fletcher's Studio, Wilmer Zehr
 Camera Club, *News-Gazette* and *Courier*
Engraving G. R. Grubb and Company
Printing Twin City Printing Company
Covers S. K. Smith Company



Table
of
Contents

ADMINISTRATION
page 8

SENIORS
page 18

UNDERCLASSMEN
page 44

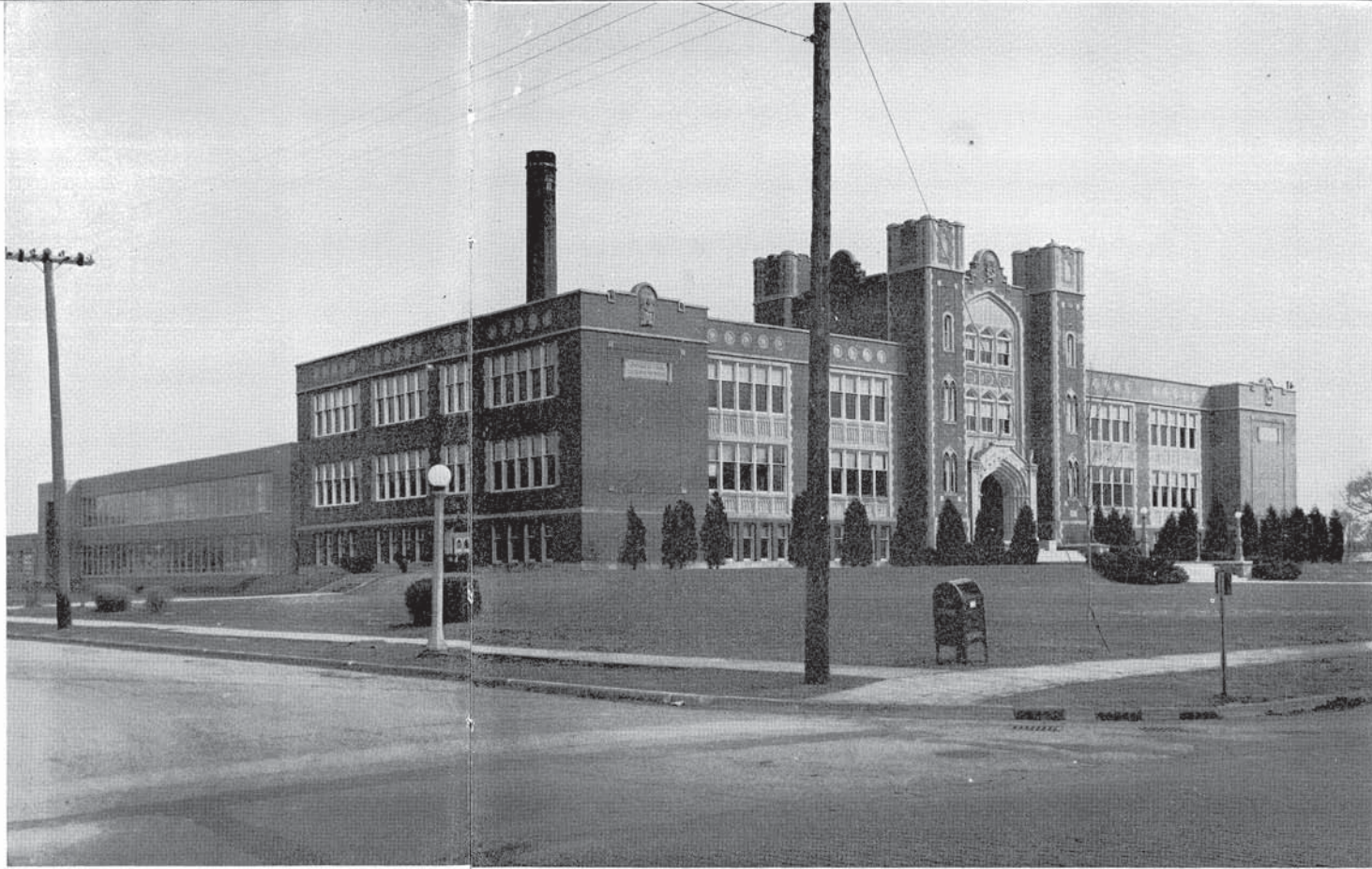
ACTIVITIES
page 66

MUSIC
page 96

SPORTS
page 110

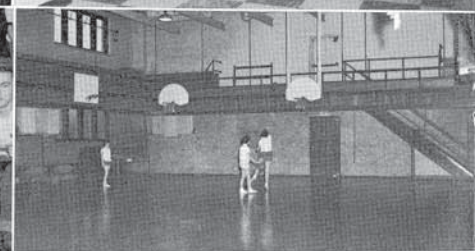
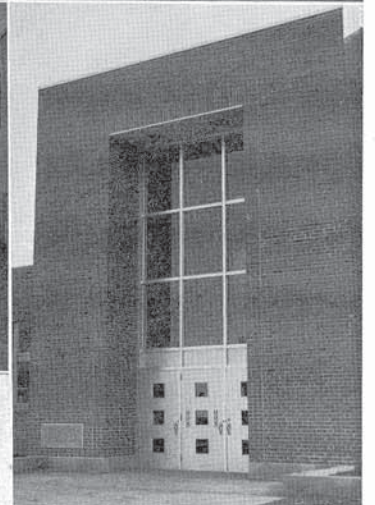
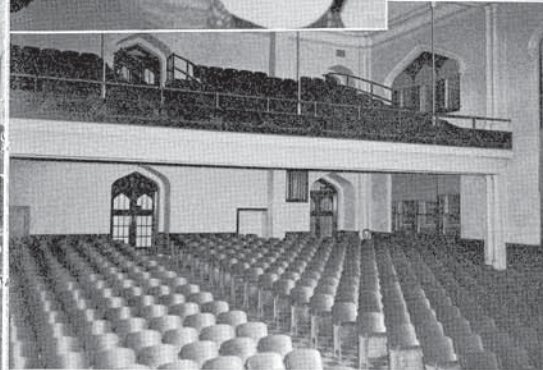
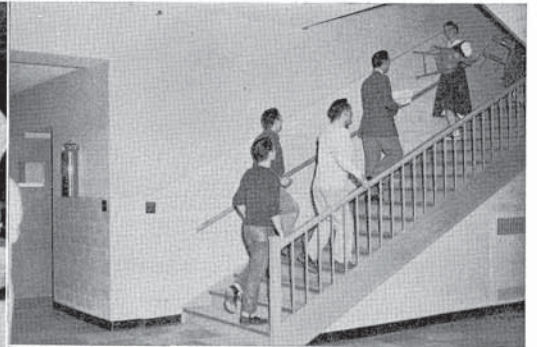
HIGHLIGHTS
page 138

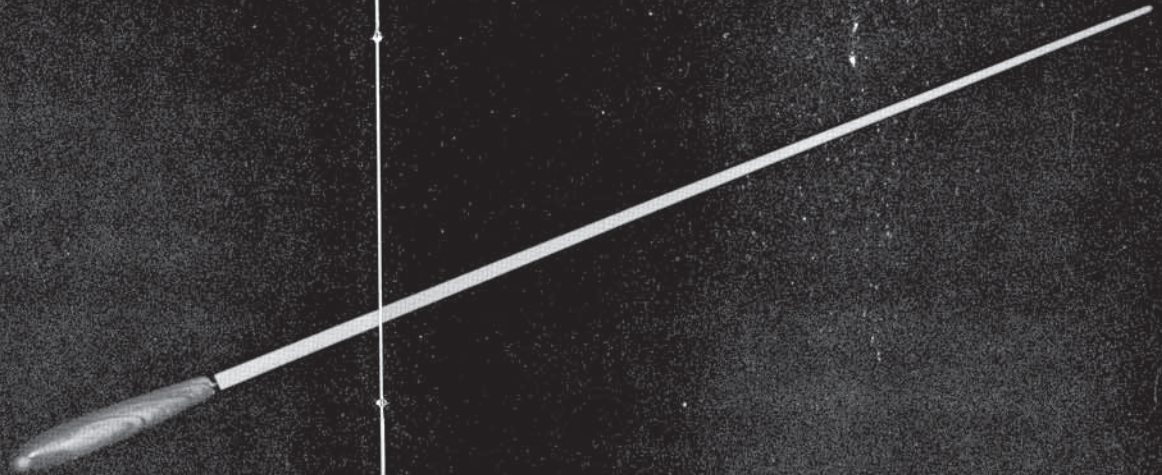
ADVERTISEMENTS
page 150



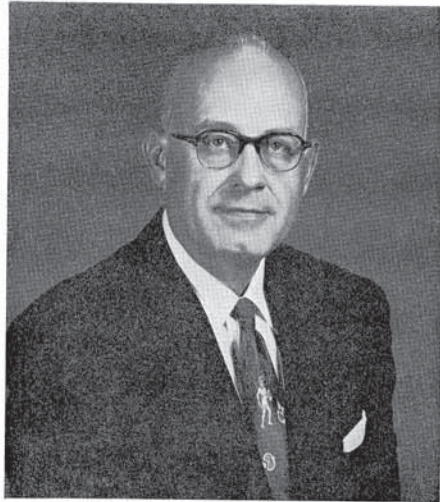
Enrollment 840
1002 South Race Street, Urbana, Illinois

Scenes Around Urbana High





ADMINISTRATION



Mr. C. C. Loew, Superintendent

To the Senior Class of 1957:

The last year you spent with us opened under the trying circumstances of a partially completed addition and a partially completed renovation program. Certainly all of you helped greatly in maintaining a fine school spirit during this time. We are happy that you were able to enjoy and use these improvements for most of the school year.

All good wishes go to you for the coming years. May your accomplishments exceed your ambitions.

C. C. Loew
Superintendent

Board of Directors

BOARD OF EDUCATION

James W. Potter; H. T. Scovill, Secretary; N. V. Filbey; Mrs. Esther Blackburn, Assistant to the Superintendent; C. C. Loew, Superintendent; Mrs. Grant G. Brown; Lowell B. Fisher; Dr. Norris L. Brookens; Mrs. Ernest M. Lyman, President.



The 1957 Rosemary

Our Conductor



Mr. Ray H. Braun, Principal

The 1956-1957 school year undoubtedly will be remembered as the one which marked the completion of the new addition to Urbana High School, the first since 1916, more than a generation ago. Students shared corridors and classrooms with plumbers, carpenters, painters, and other craftsmen who were trying to complete their work under very difficult conditions.

Particularly impressive was the cooperation of students and faculty, who accepted innumerable inconveniences and some genuine hardships with good spirit. Perhaps the prospect of a wonderful new addition encouraged them and spurred them on.

As I write this in early February, I feel that the class of 1957 is exerting the leadership which we always hope we will receive from seniors. If this capable, steady leadership continues, 1956-1957 will be classified as one of Urbana High School's most successful years.

Seniors of 1957, I hope that your graduation from Urbana High School will give impetus to further accomplishments and achievements. May you enjoy a long, happy, and worth-while life.

RAY H. BRAUN
Principal



Mr. Ralph Davis, Dean of Boys

Mr. Davis

Cheerful, cooperative, and patient—Mr. Ralph Davis, our Dean of Boys, is certainly all of these. Aside from checking attendance and interviewing and counseling boys, he is sponsor of the Urbana High Student Council.

Assistant Conductors

Miss Sarah Fisher, Dean of Girls



Miss Fisher

There is not a girl in school who does not know Miss Fisher's warm smile. Her many jobs include: Sponsor of S.K., Co-chairman of Faculty Guidance Committee, Chairman of Activity Committee, and Chairman of Scholastic and Honor Societies.

SECRETARIES

Mrs. Jo Hulett
Mrs. June Wedekind



BOOKKEEPER

Mrs. Mary Moen



OFFICE HELP

J. Hutton, H. Burns, J. Porter, J. Moore, C. York, C. Goldenstein, M. Jarrett, J. Jamison, J. Cedusky, J. Johnston, G. Longest, M. Dieter, M. Laudermilk.





Section Leaders

ENGLISH

Mrs. Enid Olson, A.B., A.M., English
 Mrs. Sarah A. Kerlake, B.A., Drama, English, Delta Sigma, Thespians
 Mrs. Marien Seward, M.A., English
 Mrs. Jean Krebs, B.S., M.S., English, Counselor
 Mrs. Rose L. Hewitt, B.A., M.A., English, Counselor
 Mrs. Mabel L. Dohyns, B.A., M.A., English
 Mrs. Viola Gribanovsky, A.B., A.M., English
 Stanley R. Hynes, B.S., M.S., M.A., English, American Literature, *Echo*



MATHEMATICS

Miss Ethelyn L. Kirk, B.A., M.A., Algebra, Trigonometry, College Algebra
 Harry D. Ryan, B.S., M.A., Mathematics, Industrial Arts, Athletic Assistant
 Mrs. Jessie Allhands, B.A., M.A., Plane Geometry, Algebra, General Math
 Miss Marie L. Bauer, A.B., M.A., Advanced Algebra, Plane Geometry, Solid Geometry, F.T.A.



SCIENCE

Eugene F. Miller, B.S., M.S., Earth Science, World Geography, Co-Sponsor Camera Club
 Richard Thompson, B.S., M.S., Biology, Swimming Coach, Counselor
 John F. Dimnick, B.S., M.S., Biology
 P. E. Smith, B.S., M.S., Physics, Algebra, Science Club
 Ralph S. Davis, B.Ed., M.S., General Science, Assistant Principal, Dean of Boys, Student Council
 Robert A. Pringle, A.B., A.M., Chemistry, General Science Counselor

Section Leaders

LANGUAGE

Mrs. Mary Louise Robins, B.A., M.A., Latin, Latin Club
 Mrs. Helen H. Link, A.B., M.A., Latin, French
 Mrs. Bernelle Moot, B.A., M.A., Spanish, Spanish Club
 Miss Lorree M. Maranville, A.B., M.A., French, Spanish, French Club



SOCIAL STUDIES

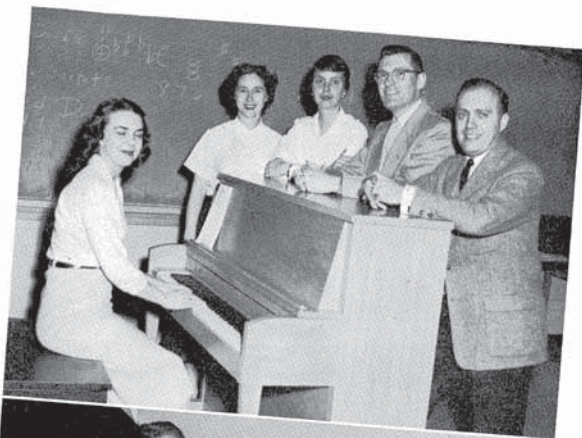
Charles M. Carpenter, B.A., M.A., U. S. History, Contemporary History
 John Bruekbauer, B.S., Civics, Physical Education, Basketball Coach, Athletic Assistant
 Miss Mildred Lawson, B.S., M.A., World History, U. S. History
 Taylor Thomas, B.S., M.S., World History
 Jiles W. Reiley, A.B., M.A., Social Studies, U. S. History, Travel Club, Camera Club
 Woodrow Visaur, B.Ed., Civics, Economics
 Eugene F. Miller, B.S., M.S., Earth Science, World Geography, Camera Club



COMMERCIAL STUDIES

Mrs. Barbara Hoffman, B.S., Shorthand, Typing
 Miss Sarah J. Fisher, A.B., M.A., Shorthand, Secretarial Training, Assistant Principal, Dean of Girls, SK
 Miss Dorothy L. Finger, B.S., Typing, Record Keeping, *Rosemary*
 Jack McNevin, B.S., M.S., Book-keeping, Business Problems, Counselor





Section Leaders

MUSIC AND ART

- Miss Annalee Harris, B.S., Choral Music
- Mrs. Rosemary Tooley, B.S., Orchestra
- Mrs. Anita Unruh, B.S., Art
- Elton R. Curry, B.A., B.S., M.A., Cadet Band
- Daniel J. Perrino, B.S., M.S., Music



PHYSICAL EDUCATION

- Warren Smith, B.S., Physical Education, Head Football Coach, Assistant Basketball and Track Coach, "U" Club
- Gene Armer, B.Ed., M.S., Health, Physical Education, Director of Athletics, Health, Safety and Physical Education
- Mrs. Mona Cornelison, B.S. in Ed., Physical Education, Health, Terrapin
- Mrs. Betty Poetker, B.A., Physical Education, Health, GAA



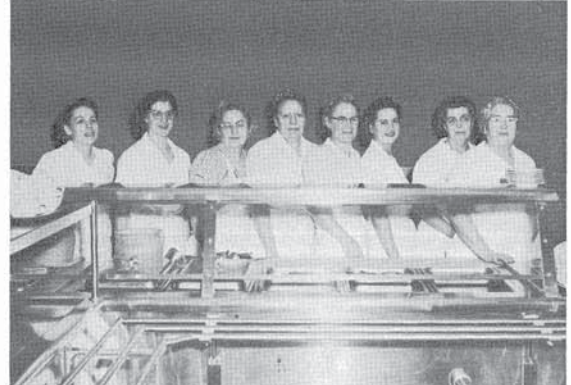
MISCELLANEOUS

- Donald L. McAllister, B.S., M.A., Diversified Occupations
- John Robertson, B.S., M.A., Industrial Arts
- Mrs. Lenna Schwabe, A.B., M.S., B.S. in L.S., Library Science, Audio-Visual, Library Club
- Mrs. Hazel Hasty, B.S., M.S., Home Economics, FHA
- Mrs. Ruth Dow, B.S., Home Economics
- Oscar Adams, B.S., M.S., Driver Training, Coach



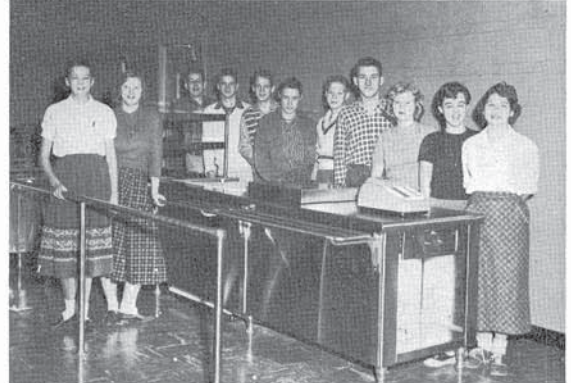
JANITORS

- True Limes, Bill Frederick, Charlie Norman, Harry Fryer, Leonard Harrington



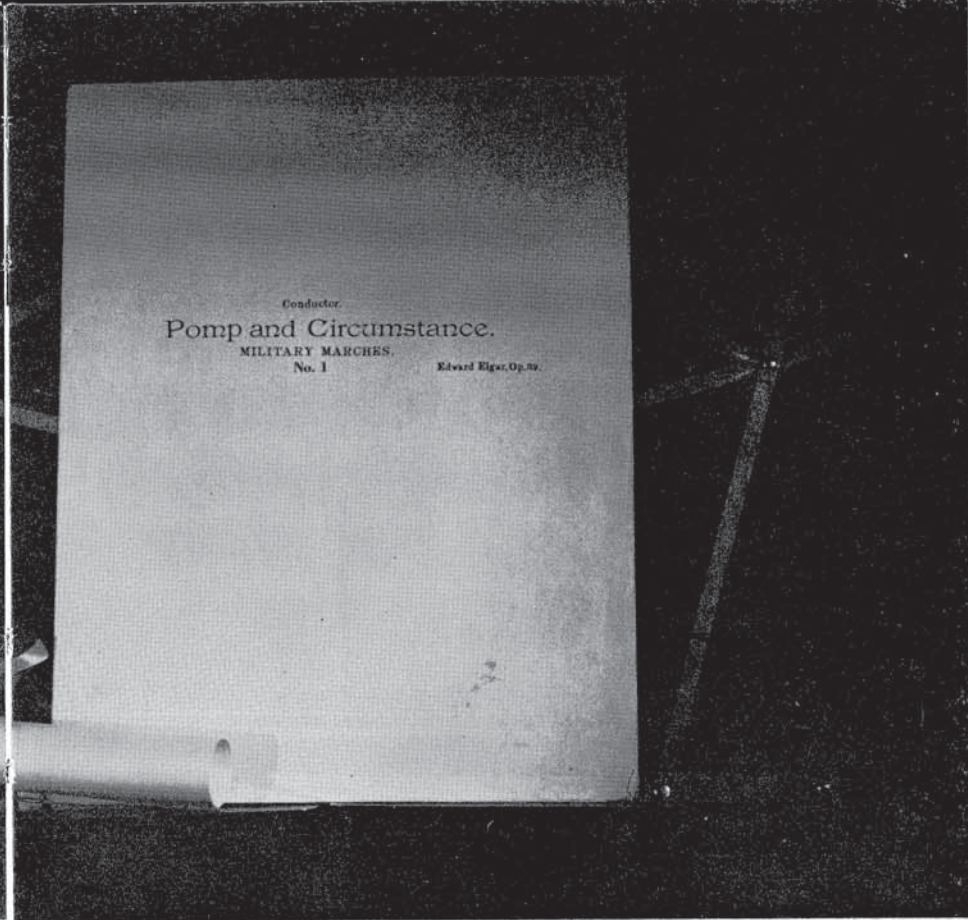
COOKS

- Mrs. Betty Goldenstein, Mrs. Nancy Mathis, Mrs. Lila Thefeld, Mrs. Sally Renner, Mrs. Flossie Bollman, Mrs. Lois Rochkes, Mrs. Gladys Leonard, Mrs. Myrtle Polston



CAFETERIA HELP

- V. Dorsett, S. Shipley, R. Goff, J. Kuypers, B. Larson, E. Barthelomy, P. Tuma, M. Dreenan, C. McBride, P. Brooks, K. Glendy



S E N I O R S



Senior Class Officers: William Myers, Rosemary Representative; Jim Russell, President; Nancy Peck, Vice-President; Larry Mackey, Treasurer, Toby Wiley, Secretary

1st Class Musicians Seniors

In the years to come, when the class of 1957 looks back on their senior year at Urbana High, these memories may stand out: the feverish campaigns put on by two parties, the Scalawags and the U.S.S. Ship Shapes, concluding with the election of these class officers—President, Jim Russell; Vice-President, Nancy Peck; Secretary, Toby Wiley; Treasurer, Larry Mackey; and Rosemary Representative, Willie Myers; vocabulary words in rhetoric; the term paper for chemistry; the Homecoming Parade; parties, dreamy dances, and thrilling athletic events; that once-in-a-lifetime chance to skip school legally on Senior Skip Day; Class Night with the annual hatchet oration and the crowning of the lovely Rosemary Queen; the impressive Baccalaureate service, where they wore their graduation gowns for the first time; the beautiful Junior-Senior Prom with the music of Johnny Rinaldo's Orchestra on June 6; the feelings of gratitude towards the teachers, coaches, and deans who guided them; and finally, the mixed feelings they felt as they marched in procession to the strains of "Pomp and Circumstance" and received their cherished diplomas.



BEVERLY ADAMS
"Bubbles" Transfer
Fisher High School;
Travel Club 3, 4; GAA
1; FHA 1, 2; SK 3, 4;
Pep Club 4; Office Help
4; Cafeteria Help 1;
Class Reporter 1; Res.
Cheerleader 1; Angler
Staff 1



PHIL ALBERTS "Flip"
Student Council 3, 4; Spanish
Club 1, 2; Track 2; Band 1, 2,
3, 4; Ensemble 2, 3, 4



UNA MARIE ALLEN
Transfer Penna High School;
Pep Club 1; Band 1, 2, 3;
Chorus 1, 2; Ensemble 1, 2;
Pacer 1, 2; Dramatics Club 2;
Panorama 3; Alpha Psi Omega



ALLAN H. ALLISON "AI"
French Club 1, 2, 3; Latin
Club 3; Travel Club 4



TERRY OTIS ALLMAN
D. O. Pres. 4; Cross-
Country 1



DONALD R. APPERSON
"Flash" "U" Club 4; Track
2, 3, 4; Band 1, 2; Sagamore



GARY LEE ASHBY
"U" Club 4; Football 1, 2, 3, 4;
Basketball 1, 2, 3; Track 1, 2,
3, 4



RUTH ELLEN BAKER
"Ruthie" Rosemary Asst.
Ad Mgr. 4; Echo 2, 3,
Feature Ed. 4; Quill and
Scroll 4; French Club 1, 2,
3; Delta Sigma 3; Travel
Club 3, 4; GAA 1, 2, 3;
SK 1, 2, 3, 4; Pep Club 4;
PTA Talent Show 3; Sag-
amore





TEROL RAY BILBREY
"Terry" "U" Club 3, 4;
Basketball 1; Track 1, 2,
3; Wrestling 2; Cross-
Country 1, 2, 3, 4



**JUDITH PRISCILLA BLACK-
FORD "Judy"**
Alpha; Lambda; Psi; Student
Council 2, 3, 4; French Club
1, 2; Travel Club 3; GAA 1,
2, 3; Science Club Co-Sec. 3,
Sec. 4; SK 1, 3, 4; Band 1, 2,
3, Sec. 4; Band Lib. 1, 2, 3;
Ensemble 1, 2, 3, 4; Stage
Show 4; Sagamore, Alpha Psi
Omega



MELVIN NEAL BOLLMAN
Student Council 1; D. O. 3, 4



**MARGARET CORNELIA
BRENGLER "Peggy"**
Echo 2; Psi; French Club
3; Latin Club 1, 2, 3; Li-
brary Club 3, Sec. 4; Sci-
ence Club 4; Art Club 4;
Science Fiction Club 4;
Office Help 4; Sagamore



WILLIAM D. CAIN "Bill"
Student Council 1, 2, 3,
Parl. 4; French Club 1,
2; Band 1, 2, 3, 4, Lib.
1, 2; Ensemble 1, 2, 4;
Band Council 4; Boys'
State; Pep Band 1, 2, 3,
4



**IRVIN HENRY CAMPBELL
JR. "Junior"**
Swimming 1



LOUISE CARLSON
Echo 1, 2, 3; Spanish Club 1,
2; Delta Sigma 2, 3; Travel
Club 3, 4; GAA 1, 2, 3, 4;
Terrapin 1, 2, 3, Sec. 4; SK
1, 2, 3, 4; D. O. 4; Pep Club
4; Res. Cheerleader 1, 2



**WILLIAM BLY
CAMPBELL "Bill"**
Alpha 1; Student Council
1; French Club 1, 2



**HELEN MARY
FRANCES BURNS**
Alpha; Lambda, Sec.; Psi;
Student Council 2, 3, 4; Latin
Club 2, Vice-Pres. 3; Travel
Club 3, Pres. 4; GAA 1, 2, 3;
SK 1, 2, 3, 4; Pep Club 4;
Office Help 3, 4; Class Treas.
2; Chorus 1, 2; Res. Cheer-
leader 1, 2, 3; Court of Honor
2, 4; Tigers Den Council 2, 3,
Sec. 4; Girls' State Alt. 3;
PTA Talent Show 1, 2, 3;
Sagamore; Alpha Psi Omega

DON BUSEY
Echo 1, 2; French Club 1,
2; Delta Sigma 1; Library
Club 1, 2, 3, 4; Science Club
3; Camera Club 1, 2, 3;
Swimming 1, 2; "Beware
the Bear"; PTA Talent
Show 1, 2

**JUDITH ARLENE
CEDUSKY**
Echo 4; Student Council
4; Latin Club 1, 2;
Travel Club 3, 4; GAA
2, 3, 4; Library Club 2,
3; FHA 1, 2; SK 1, 2,
3, 4; Pep Club 4; Office
Help 2, 3, 4; Chorus 2, 3,
4

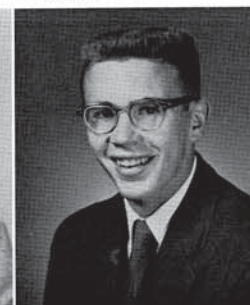
**DENNIS ROBERT
CHAMBERLIN**
Student Council 3, 4; Delta
Sigma 3; Science Club 1; "U"
Club 4; Football 2, 3, 4; Track
1, 2, 3, 4; Swimming 1, 2;
Wrestling 3, 4; Band 1, 2, 3,
4; Soloist 1, 2, 3; Ensemble
2, 3, 4; Tigers Den Council 4;
Dance Band 3, 4

LARRY EDWARD CLARK
Football 1; Track 1; Wres-
tling 3; Orchestra 1, 2, 3, 4;
Ensemble 3

**THOMAS EUGENE CLEGG
"Tom"** Spanish Club 1, 2

**KATHLEEN RUTH
BRIGGS "Kathy"**
French Club 1, 2; Travel
Club 3, 4; Science Club 3,
Historian 4; SK 2, 3;
Sagamore

THOMAS E. BURGIN "Tom"
Spanish Club 2; Golf 4





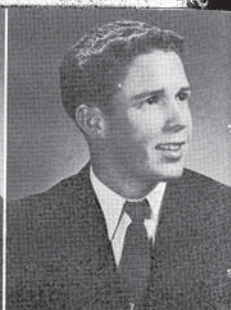
THOMAS RAYMOND
CLEVENER "Tom"
Library Club 1, 2, 3; "U"
Club 4; Football 1, 2, 3,
4; Track 1, 2; Wrestling 1



LAVERNA ROSALIE
COPELAND "Copey"
Transfer Monticello High
School; GAA 4; FHA 2, 4;
SK 4; Pep Club 4



MARGIE ANN COOK "Cookie"
Rosemary 1, 2; Spanish Club
1, 2; GAA 1; FTA 1, 2; "Life
With Father"; Band 1, 2, 3;
Ensemble 1



JAMES M. CORRAY
"Jim" French Club 1,
2; PFA 2, Sec. 3, 4;
Football 1, 2; Track 1



PAUL EDWARD DAVIS
"Davies" "U" Club 4;
Basketball 3, 4; Track 3,
4



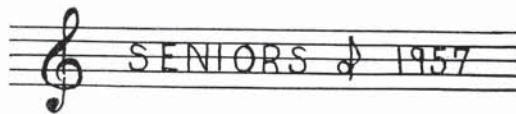
RICHARD DAVIS "Deacon"
French Club 1, 2; Library Club
2, Treas. 3; Sergeant-at-Arms
4; "U" Club 4; Football 1, 2,
3, 4; Basketball 1, 2; Track
1, 2, 3, 4; "Harvey"



DINAH ANN DEEDRICK
Chorus 1, 2, 3, 4; Ensemble 3;
All State 2, 3



NANCY CARTER
DERROUGH
Rosemary 2, 3, Co-Bus.
Mgr. 4; Alpha; Lambda;
Psi 3; Student Council 4;
French Club 2, 3; Delta
Sigma 1, 2, 3, V. Pres. 4;
Thespians 3, 4; Travel
Club 3, 4; GAA 1; SK 1,
2, 3, 4; FTA 1, Hist. 2,
Parl. 3, 4; "The Tenth
Word"; "Harvey"; Chorus
1, 2; Speech Contest 3, 4;
Sagamore; Alpha Psi Omeg-
a, Vice-Pres.



THOMAS WILLIAM
COSTA "Meatball"
"U" Club 3, 4; Football
1, 2, 3, 4; Track 1, 2, 3;
Wrestling 1, 2, 3, 4

JOHN EVERETT CROSS
"Jake" Spanish Club 1, 2;
Library Club 4; Football 1, 2;
Basketball 1, 2, 3, 4

JOANNE CURRIE

GARY WATSON
DANIELS "Gar"
Spanish Club 2; Camera
Club 2; Track 1; Swim-
ming 1, 2, 3

JANICE RUTH DILLEY
"Jan" Rosemary 2; Span-
ish Club 1, 2; Travel
Club 2, 4; GAA 1, 2, 3;
Terrapin 1, 2, Sec. 3,
Pres. 4; SK 1, 2, 3,
Treas. 4; Pep Club 4;
Class Treas. 3; Chorus 1;
Baton Soloist 4; Baton
Twirler 2, 3, 4; Res.
Cheerleader 1, 2, 3; Tig-
gers Den Council 3; PTA
Talent Show 1, 2, 3, 4

ANN DOUGLAS
Rosemary Act. Ed. 4; Alpha;
Lambda; Psi, Pres.; Student
Council 4; Latin Club 1, 2;
Travel Club 3, 4; GAA 3, 4;
Lib. Club 1, 2, Vice-Pres. 3,
Pres. 4; SK 2, 3, 4; Pep Club
4; Court of Honor 4; Saga-
more; Alpha Psi Omega

KENNETH R. W. DOUGLAS
Alpha; Lambda; Psi; Student
Council 1, 2; Library Club 1,
2, 4; Football 1; Alpha Psi
Omega

RONDEAU DuFRANE
"Ronnie" Rosemary 1, 2,
3, 4; Student Council 3, 4;
Library Club 1, 2, 3, 4;
"U" Club 4; Camera Club
1, 2, 3; Cafeteria Help 2;
Football 1, 2, 3, 4; Basket-
ball 1, 2; Track 2; Golf
1, 2





JAMES W. EDWARDS
"Chester" "U" Club 3, 4; Football 1, 2; Swimming 1, 2, 3; Band 1, 2, 3



JEAN A. ELAM "Jeannie"
GAA 1, 2, 3, 4; SK 1, 2; Band 1, 2, 3; Res. Cheerleader 1, 2



RICHARD LEE FITZSIMMONS "Fitz"
Football 1, 2; Track 1, 2; Wrestling 4; Cross-Country 3; FFA 4



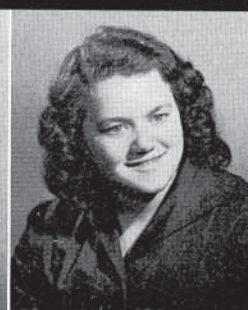
MARGARET EWING "Maggie" *Rosemary* 1; Spanish Club 2, 3; Delta Sigma 1, 2, 3, 4; Travel Club 3, 4; GAA 1, 2; Library Club 2, 3, 4; Art Club 4; SK 1, 2, 3; Chorus 1, 2



RANDALL FREEMAN "Randy" Spanish Club 1, 2; "U" Club 4; Football 1, 2; Track 1; Wrestling 1, 2, 3, 4



PAOLA GIANTURCO
Rosemary 1, 2, 3; *Echo* 1, 2, 3; Co-Ed-in-Chief 4; Quill and Scroll 3, 4; Alpha, Pres.; Lambda; Psi; Student Council 1, 2, 3, 4; State Convention Delegate 3; French Club 1, 2, 3, Sec. 4; Delta Sigma 1, 2, 3, Sec. 4; Thespians 3, 4; Travel Club 3, 4; GAA 1, 2; SK 1, 2, 3, 4; "The Long Watch"; Tri-High Queen 4; DAR 4; Speech Contest 2, 3, 4; Spring Inspection Trip 3; Corridor Gossip 4; Co-Valedictorian; *Rosemary* Court; Sagamore; Alpha Psi Omega



ROBERTA JEAN GOODWIN "Bert" FHA 1; Office Help 3, 4



JIMMIE GREEN "Greenie"



BETTE ANN FREEMAN
Rosemary 1, 2, 3, Sen. Ed. 4; *Echo* 2, 3; Psi; French Club 1, 2; Travel Club 3, 4; GAA 1, 2, 3, Sec. Treas. 4; SK 1, 2, 3, Pres. 4; FTA 1; Pep Club 4; Band 1, 2, 3, 4; Baton Soloist 4; Ensemble 1, 2, 3, 4; Baton Twirlers 1, 2, 3, Head 4; Res. Cheerleader 1, 2; PTA Talent Show 3, 4; *Rosemary* Court; Sagamore

NANCY PATRICIA GREGERSON "Greg"
Spanish Club 2; Travel Club 3, 4; GAA 1, 2, Vice-Pres. 3, Pres. 4; Science Club 4; SK 1, 2, 3, 4; PTA 2; Band 1, 2, 3, 4; Orchestra 1; Ensemble 1, 2, 3, 4; Sagamore

DIANNE HARDY
Echo 2, 3; French Club 1, 2; GAA 2, 3; Terrapin 4; SK 1, 2, 3, 4; Pep Club 4; Chorus 1, 2, 4; Soloist 4; Ensemble 2, 4; Res. Cheerleader 1, 2; Court of Honor 2, 4; Sagamore

TOMMY HART "Buff"
"U" Club 2, 3, 4; Basketball 1; Track 1, 2, 3; Wrestling 2, 3, 4; Cross-Country 1, 2, 3, 4

RONALD BELLINI
Art Club 2; D.O. 3; Chorus 1, 2, 3, 4; Madrigals 1, 2, 3, 4; Soloist 1, 2, 3, 4; Ensemble 1, 2, 3, 4; All State 1, 2, 3; Quartet 4

EARL FRANKLIN
French Club 2, 3; Football 3; Track 3, 4; Cross-Country 4; A Cappella Choir 3, 4; Chorus 1, 2, 3; Madrigals 2, 3, 4; Ensemble 4

SONITA JEANINE FLEENER "Jenn" Spanish Club 1, 2; Travel Club 3, 4; Library Club 1, 2, 4; FHA 4; SK 1, 2, 3, 4; Office Help 4; Cafeteria Help 1, 2, 3, 4

KENNETH JAMES FRANTZ "Nick" D. O. 3, 4





DON HENRY



DELORES JEAN HICKS
Cafeteria Help 1, 2, 3



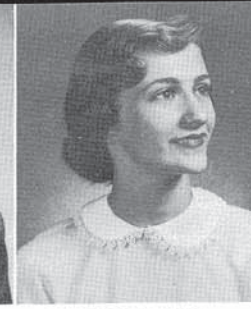
DENISE MYRTLE HILE
Echo 3, 4; Quill and Scroll 4;
Alpha; Psi; Student Council
Alternate 3; Spanish Club 2,
3; Delta Sigma 2, 3, 4; Travel
Club 3, 4; GAA 1, 2, 3, 4; Li-
brary Club 3, Soc. Chr. 4; SK
1, 2, 4; "Tenth Word"; Saga-
more



ROBERT WARNER
HINDSLEY "Bob"
Rosemary 1, 2, Sports
Ed. 3, Editor-in-Chief 4;
Quill and Scroll 3, 4;
Alpha; Lambda; Psi,
Vice-Pres.; French Club
2, 3; Art Club 1, 2; Golf
1; Band 1, 2, 3, Vice-
Pres. 4; Band Lib. 1,
Head Lib. 2, 3, 4; Soloist
1, 2, 3, 4; Ensemble 1, 2,
3, 4; Ensemble 1, 2, 3,
4; Orchestra 1, 2, 3, 4;
All State 1, 4; Boys'
State 3; Sagamore; Al-
pha Psi Omega



WILLIAM ALFRED
HUBBARD "Hubbat"
Echo 4; Student Council
4; French Club 1, 2, 3;
Delta Sigma 1, 2, 3, 4;
Thespians 3, 4; Travel
Club 3; Science Club 1,
2; Track 1; Swimming
1, 2, 4; Wrestling 3;
Cross-Country 1, 2; "Our
Miss Brooks"; "Star-
dust"; "Seven Sisters";
"Antic Spring"; "Glass
Menagerie"; "Our Hearts
Were Young and Gay";
Band 1, 2, 3, Council 4;
Soloist 3, 4; Ensemble 2;
Sagamore



JUDITH ANN HUTTON
"Judy" Student Council Al-
ternate 1, 2; Delta Sigma 1,
2, 3, 4; Travel Club 3, Sec. 4;
GAA 1, 2, 3, 4; SK 2, 3, 4;
Pep Club 4; Office Help 3, 4;
Res. Cheerleader 2, 3



LINDA LOUISE INGLE
Echo 2; Lambda; Psi; Travel
Club 3, Treas. 4; GAA 1, 2, 3,
4; Terrapin 2, 3, Vice-Pres. 4;
SK 1, 2, 3, 4



MARIAN ESTELLE IRLE
Rosemary 1; *Echo* 1, 2, 4;
Student Council 3, 4;
Spanish Club 1, 2, 3, 4;
Delta Sigma 1, 2, 3, 4;
Travel Club 2, 3, 4; GAA
1, 2, 3, 4; PHA 1, 2; Art
Club 1; SK 1, 2, 3, 4;
PTA 2; Pep Club 4;
Chorus 1, 2; All State 2;
Talent Show 2



RIEBER CORNELIUS HOVDE,
JR. "Rieb"

Transfer Green Valley High
School; Alpha; Lambda;
Spanish Club 2, Sec. 3; Vice-
Pres. 4; Delta Sigma 2, 3;
Travel Club 4; Camera Club
Vice-Pres. 4; Class Reporter 1;
"Life With Father"; Band 1,
2, 3; Ensemble 3, 4; Stage
Show 4; PTA Talent Show 2,
4; Tri-High Stunt Show 2, 4;
Sagamore

JAMES ALFRED HUGHES
"Jim" Cafeteria Help 2, 3;
FFA 3, 4

FRED L. HUBBARD
Alpha; Lambda; Psi;
Camera Club 2, Sgt.-at-
Arms 3, Pres. 4; Track 1,
2, 3; Swimming 2;
Wrestling 3, 4; Band 1,
2, 3, 4; Soloist 4; Ensem-
ble 3, 4; Dance Band 3,
4; Orchestra 3; Pep Club
1, 2, 3, 4; Alpha Psi
Omega; Sagamore

JUDITH MARCIA JAMISON
"Judy" Transfer Evansville,
Indiana, High School; Travel
Club 3, 4; GAA 1, 2; SK 3, 4;
Office Help 4; Chorus 1, 2

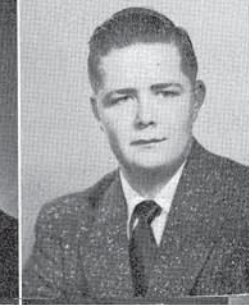
TWILA CHARLENE
JARRETT "Tess"
Psi; Travel Club 3, 4; SK 1,
2, 3, 4; Pep Club 3, 4

DONALD WILLIAM
JAMES "Don" Science
Club 4

GARY HOOVER



RUTH ILES





MARIE JANET JENKINS
Alpha; Lambda; Psi;
Travel Club 3, 4; SK 1, 2,
3, 4; Pep Club 3, 4; Alpha
Psi Omega



ROBERT EUGENE JOHNSON
"Bob" "U" Club 2, 3, 4;
D.O. 4; FTA 3; Track 1, 2,
3; Cross-Country 1, 2, 3, 4



**JUDITH MARIKAE
JOHNSTON "Judy"**
Travel Club 3, 4; GAA 3;
PHA 2, 3, 4; Art Club 4; SK
1, 2, 3, 4; Pep Club 4; Office
Help 3, 4; Res. Cheerleader 3;
Chorus 1, 2; All State 2; Saga-
more



SHARON ANN JONES
"Sherrie" Travel Club
3, 4; GAA 2, 3; FHA 2,
Pub. Relations 3, Sec. 4;
Art Club 4; SK 1, 2, 3,
4; Res. Cheerleader 3;
Sagamore



**HELEN LOUISE
LANDRITH**
Echo 1, 2, 3; Travel Club
2, 3, 4; GAA 1, 2, 3;
PHA 2; Art Club 4; SK
1, 2, 3, 4; D.O. Vice-
Pres. 4; Office Help 1, 2,
3



SALLY LOUISE LANGHAAR
"Lu" Rosemary 1; Echo 1, 2, 3, 4;
Quill and Scroll 4; Alpha,
Sec.; Lambda; Psi; Student
Council 1, 2, 3, Vice-Pres. 4;
French Club 1, 2, Sec. 3; Pres.
4; Delta Sigma 1, 2, 3, 4;
Travel Club 3, 4; GAA 1, 2, 3;
SK 1, 2, 3, Sec. 4; Pep Club 4;
Class Sec. 3; Res. Cheerleader
1, 2; Var. Cheerleader 3, 4;
Student Council Workshop 4;
Stage Show 3, 4; PTA Talent
Show 3; Tri-High Stunt Show
3; Sagamore; Alpha Psi Omega



LUCY CATHERINE LAROE
"Lu" Transfer St. Mary's
Academy; Rosemary 2; Echo
1, 2, 4; Quill and Scroll 4;
Alpha; Psi; Latin Club 1, Vice
Pres. 2; Delta Sigma 2; Travel
Club 4; GAA 1, 2, 3, 4; Sci-
ence Club 4; SK 1, 2, 4; Pep
Club 4; Class Treas. 3; "Let
Me Grow Up"; Chorus 1, 2, 3,
4; Madrigals 2; Ensembles 1,
2, 3, 4; Res. Cheerleader 1;
Var. Cheerleader 2; Stage Show
4; PTA Talent Show 2, 4;
Sagamore



RICHARD LANHAM
"Dick" Transfer Lincoln
High School; Lambda;
Psi 3; Travel Club 2, 4;
Science Club 2, 3, Vice
Pres. 4; Cross-Country 1;
Chr. Tigerectory; Saga-
more

SENIORS 1957

SENIORS 1957

ROSEMARY KELLER
Transfer Champaign High
School; Office Help 1, 2

OREN BYRL KESLER
Alpha; Lambda; Spanish Club
2, 3, 4; Science Club 3, 4;
Wrestling 1, 2; Science Fiction
Club 4; Sagamore; Alpha Psi
Omega

LINDA LOU KING "Red"
Transfer Homer High School;
D.O. 3

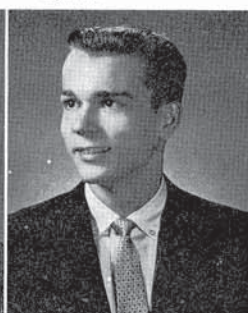
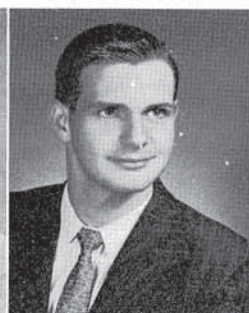
**EVERETT RAY
KRUEGER "Kraut"**
Library Club 2, 3, 4; "U"
Club 4; Football 1, 2, 3,
4; Basketball 1, 2, 3,
Track 2, 3

CHARES DEAN LEWIS
"Chuck" Rosemary Sports
Ed. 4; Echo 1, 2, Sports
Ed. 3; Alpha; Lambda;
Psi; Student Council 4;
French Club 1, 2, 3, 4;
Delta Sigma 1, 2, 3, 4;
Thespians 4; Library
Club 1, Sergeant-at-Arms
2, 3, Parl. 4; Camera
Club 1; "Cracked Ice";
"Life With Father"; Sag-
amore; Alpha Psi Omega

VICTOR T. LUKAS "Vic"
Rosemary 4; Lambda; Psi;
French Club 2, 3; Science Club,
Vice-Pres. 3, Pres. 4; Science
Fiction Club Vice-Pres. 4; Sag-
amore; Alpha Psi Omega

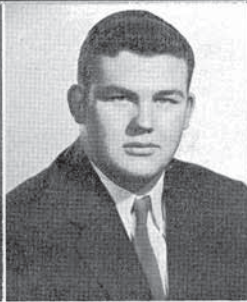
RICHARD ALLEN LUKER
"Luke" Echo 3, Sports Ed.
4; Quill and Scroll 4; Student
Council 3; Spanish Club 2, 3;
Latin Club 1; "U" Club 2, 3,
4; Basketball 1, 2; Track 1, 2,
3, 4; Wrestling 3; Cross-Coun-
try 1, 2, 3, 4; Band 1, 2, 3, 4;
Orchestra 1, 2, 3; Ensembles
1, 2, 3, 4; Dance Band 3, 4;
Sagamore

DONNA MACKAY
Echo 1, 2, 3, 4; Student
Council 2, 3, 4; Spanish
Club 1, 2; Delta Sigma 1,
2, 3, 4; Travel Club 3, 4;
GAA 1, 2, 3, 4; SK 1, 2,
3, 4; Pep Club 4; Office
Help 1, 2; Class Sec. 2;
Chorus 1, 2; Madrigals 2;
Res. Cheerleader 1, 2, 3





LARRY MACKEY
Student Council 1, 3; "U"
Club 2, 3, Pres. 4; Foot-
ball 1, 2, 3, Capt. 4; Bas-
ketball 1, 2, 3; Track 1, 2,
3, 4; Wrestling 4; Class
Pres. 2; Class Treas. 4;
Tigers Den Council 1, 2,
4; "Mr. Wonderful";
State Pole Vaulting Co-
Champ 3; Sagamore



JOHN RALPH MADDY
"Maddoge" Library Club 2,
3, 4; "U" Club 2, 3, 4; Foot-
ball 1, 2, 3, Capt. 4; Basket-
ball 1, 2, 3; Track 1, 2, 3, 4;
Wrestling 4



RAY MAHANNAH
Science Club 4; Science Fiction
Club 4



CAROL ANN MARIS
Transfer Champaign
High School; Student
Council Treas. 4; Latin
Club 1; Travel Club 3;
GAA 2, 3; SK 2, 3, Vice-
Pres. 4; Class Vice-Pres.
3; Chorus 1; Res. Cheer-
leader 2; Var. Cheerleader
3, Co-Capt. 4; Tigers Den
Council 4; *Rosemary*
Court; Sagamore



**BARBARA LOUISE
McLAUGHLIN**
Cafeteria Help 1, 2



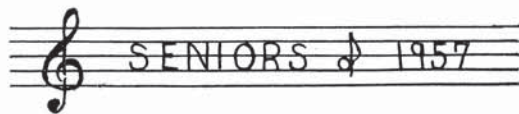
ROSEABELL DORIS McLEOD
Psi; Latin Club 2; Travel Club
3, 4; Library Club 1, 2, 3, 4;
SK 4



**KARL FREDERICK
MEHNERT**
Library Club 1, Vice-Pres. 2,
3, 4; Track Mgr. 1



**PATRICIA ANN
MESNARD "Pat"**
French Club 1, 2; SK 1, 2,
3; Chorus 1, 2, 3, 4; Mad-
rigals 3; Ensemble 4; All
State 2, 3



CAROLE SUE MARTIN
Echo 1, 2, 3, 4; Quill and
Scroll 4; Psi; Student Coun-
cil 1, 2; Spanish Club 1, 2, 3;
Delta Sigma 1, 2, 3, 4; The-
sopians 3, 4; Travel Club 3, 4;
GAA 1, 2, 3; SK 1, 2, 3, 4;
Pep Club 4; Office Help 4;
Class Sec. 1; Chorus 1, 2; En-
semble 2; Var. Cheerleader 2;
Court of Honor 3; "Beware
the Bear"; "Stardust"; "Seven
Sisters"; PTA Talent Show 2,
4; Sagamore

**PATRICIA ANN
MARKSTAHLER "Patty"**
French Club 1, 2; FTA 3;
Chorus 2, 4

JIM MARSHALL "Jim"
D. O. 4; Football 1

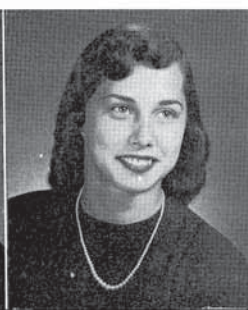
NILA JEAN McCOOL
"Mickey" Spanish Club
3; Travel Club 3, 4;
GAA 3; SK 1, 2, 3, 4

**WILLIAM LEROY
MYERS "Willie"**
Spanish Club 1; Travel
Club 3, 4; "U" Club 3,
4; Football 1, 2, 3, 4;
Basketball 1, 2; Track 2,
3; Wrestling 3, 4; Class
Rosemary Rep. 4; Talent
Show 3, 4

JANET MILLER
Alpha; Lambda; Spanish Club
1, 2; Delta Sigma 3, 4; Travel
Club 3, 4; GAA 1, 2, 3, 4; SK
1, 2, 3, 4; Pep Club 4; Band
1, 2, 3, 4; Ensemble 1; Suga-
more

MARTHA ANN MOCK "Mart"
Rosemary 1, 2; *Echo* 1, 2, 3, 4;
Student Council 1; Spanish
Club 1, 2; Delta Sigma 1, 2,
3, 4; Travel Club 3, 4; GAA
1, 2, 3; SK 1, 2, 3, 4; Pep
Club 4; Class Vice-Pres. 1;
Chorus 1, 2; Ensemble 2; Res.
Cheerleader 2; Court of Honor
1, 3; Homecoming Queen 4;
PTA Talent Show 1, 4

JUDITH RAE MORGAN
"Judy" Psi; Delta Sigma
1, 2, 3; Travel Club 3; SK
1, 2, 3; "Beware the Bear";
"Stardust"; Chorus 1, 2, 3;
Madrigals 3; Ensemble 4;
Res. Cheerleader 3





CHRISTOPHER ALAN MOYER "Chris"
Rosemary Co-Art Ed. 4; Alpha; Lambda, Pres.; Art Club 2; "U" Club 3, 4; Football 1, 2, 3, 4; Track 1, 2, 3, 4; Swimming 1, 2, 3, Capt. 4; Class *Rosemary* Rep. 1; Band 1, 2, 3, Pres. 4; Orchestra 1, 2; Ensemble 1, 2, 3, 4; Dance Band 3, 4; Sagamore; Alpha Psi Omega, Pres.



JoANN MURRAY
 GAA 1, 2, 3; Pep Club 4; Cafeteria Help 4; Chorus 1, 2



GERALD NICHOLS "Jerry"



NANCY JEANNE PECK
Echo 1; Lambda; Psi; Student Council 3, 4; French Club 1, 2, 3, 4; Spanish Club 3, 4; Travel Club 3, 4; GAA 1, 2, 3; Art Club 2, 3; SK 1, 2, 3, 4; Pep Club 4; Class Sec. 4; Sagamore



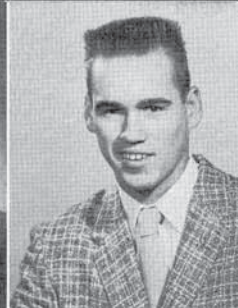
PHYLLIS MAE POWELL "Phyl"
Rosemary 1; *Echo* 1, 2, 3; Psi; French Club 2, 3; Delta Sigma 1, 2, 3, Pres. 4; Thespians 3, 4; Travel Club 3, 4; GAA 1, 2, 3; Science Club 1; SK 1, 2, 3, 4; "You Can't Take It With You"; "Beware the Bear"; "Life With Father"; Sagamore; Alpha Psi Omega



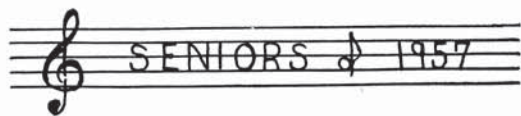
DON PRATHER "Farmer"
 Student Council 2; French Club 1, 2; Library Club 1, 2; "U" Club 2, 3, 4; Football 1; Track 1, 2, 3, 4; Cross-Country 2, 3, 4; Class Treas. 1; FFA Pres. 2, Treas. 3, Vice-Pres. 4; Boys' State 3; Sagamore



RUTH PUTNAM
 Transfer Siloam Springs High School, Siloam Springs, Ark.; *Echo* 4; French Club 2, 3; Delta Sigma 2, 3; Travel Club 3, 4; GAA 2, 3, 4; Library Club 1, 2, Prog. Chr. 3, 4; FHA 1, 2, Sec. 3, Vice-Pres. 4; SK 2, 3, 4; PTA 3, 4; Pep Club 4; Office Help 4; Band 1, 2, 3; Chorus 1; Sagamore



GENE REINHOLD
 "U" Club 4; Football 1, 4; Track 1



GAIL PIERCE

Echo 1, Feat. Ed. 2, Asst. Ed. 3, Co-Ed. 4; Quill and Scroll 3, 4; Alpha, Vice-Pres.; Lambda; Psi; Student Council 1; French Club 1, 2, 3, Vice-Pres. 4; Delta Sigma 1, 2, Treas. 3, 4; Thespians 3, 4; Travel Club 3, 4; GAA 1, 2; SK 1, 2, 3, 4; FTA 1, Sec. 2, Vice-Pres. 3, 4; "Seven Sisters"; Soloist 3; Girls' State Rep. 3; State Speech Contest 3; Echoes of Urbana High; Co-Valedictorian; *Miss Rosemary*; Sagamore; Alpha Psi Omega

CHARLENE PENNY
 Psi; Delta Sigma 3, 4; Travel Club 3, Vice-Pres. 4; GAA 1, 2, 3, 4; SK 1, 2, 3, 4; Pep Club 4

JANICE LEE PORTER

"Jan" *Echo* 1, 2, 3; Alpha; Lambda; Vice-Pres.; Psi; Spanish Club 1, 2, 3, 4; Delta Sigma 1, 2, Parl. 3, 4; Thespians 2, 3, Pres. 4; Travel Club 3; GAA 1, 2, 3, 4; Art Club 1; SK 1, 2, 3, 4; PTA 1, 2, Treas. 3, 4; Office Help 2, 3, 4; "Beware the Bear"; "Stardust"; "The Long Watch"; Jr. Red Cross Sec. 1; Sagamore; Alpha Psi Omega

MARGARET ELLEN PITTMAN

Echo 1, 2; French Club 1; Travel Club 2, 3; GAA 1, 2, 3; SK 1, 2, 3, 4; Chorus 1, 2

JOHN REYNOLDS

Lambda; Psi; Student Council 4; Latin Club 2; Delta Sigma 2, 3, 4; Thespians 3, Vice-Pres. 4; Travel Club 3, 4; Science Club 4; "Life With Father"; "Stardust"; "How to Propose"; "Rising of the Moon"; "Long Watch"; "Going Places"; "Seven Sisters"; Chorus 4; Madrigals; Ensemble 4; Speech Contest 4; PTA Talent Show 4; Co-Salutatorian; Sagamore; Alpha Psi Omega

CORCELIA ANNA ROBERTS
 "CeAnn" GAA 1; Chorus 1, 2

ELIZABETH JOAN ROBERTS

"Liz" "Betty"
Rosemary Lit. Ed. 4; *Echo* 1, 2; Quill and Scroll 4; Alpha; Lambda; Psi; French Club 3, 4; Alumna Coun. 3, 4; Delta Sigma 1, 2, 3, 4; Thespians 2, 3, Sec. Treas. 4; GAA 1; Library Club 1, Vice-President 2, President 3, 4; Art Club Pres. 4; SK 1, 2, 3, 4; "Life With Father"; "Stardust"; "Seven Sisters"; "Long Watch"; "Claudia"; Spring Inspection Trip 2, Bus. Mgr. 3; Co-Salutatorian; Sagamore; Alpha Psi Omega, Secretary

JAMES ROY ROBERTS

"Jim" Student Council 4; French Club 1, 2; "U" Club 2, 3, 4; Track 2, 3; Wrestling 2, 3, Most Valuable Wrestler 4; Sagamore

