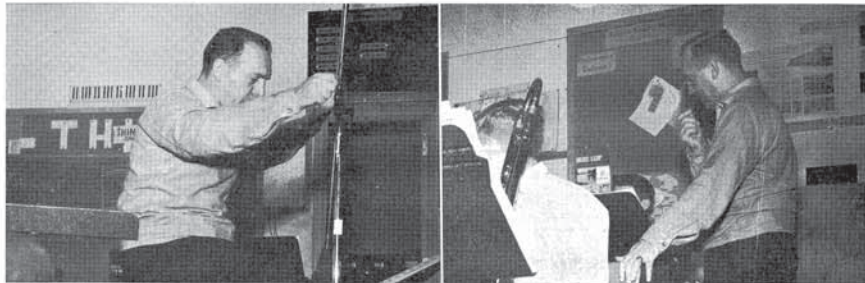


Dedication

Once in a while you meet someone you just naturally like. You like him not for any special quality, but just for the kind of person he is. Maybe he's dedicated; a person never too busy to see that the best possible results come from every project. Maybe he's understanding; a person to go to in times of worry or trouble. Maybe he's the kind of person who doesn't teach you a subject but teaches you to love it.

We think Daniel J. Perrino is that kind of person. This year, the class of 1959 proudly dedicates the *Rosemary* to Mr. Perrino, a friend to everyone who ever knew him.

DJP—at work—with music—and people—as usual



Karen,
 Here's to a wonderful girl, I'm fact,
 the most wonderful girl. I'll never
 forget the fun we've had this summer.
 Be sure and have fun this winter when
 I'm gone and keep up your terrific
 grades. Always remember some of the
 decisions that we had, as usual.

Foreword

The purpose of the 1959 *Rosemary* is to perpetuate for you fond memories of your classmates, of your teachers, and of the many activities which have given you pleasure. In the years to come it is our hope that when you leaf through this *Rosemary*, you will live again these memorable high school years.

I'm sure you'll be a success in
 life because you've really got the back-
 grounds to do it.
 Best of luck in whatever you do
 and may God bless you,
 Love,
 [Signature]

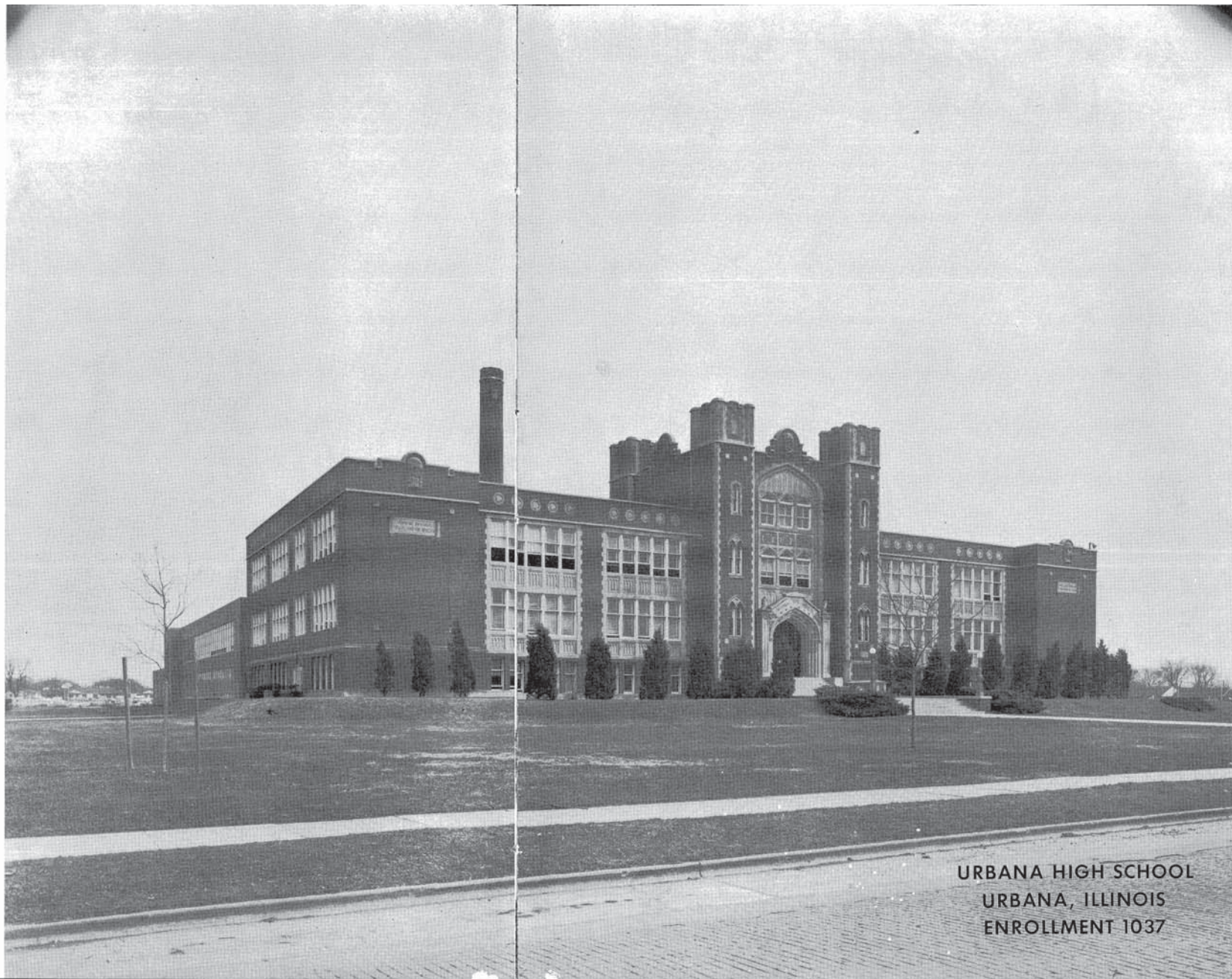
Rosemary

1959

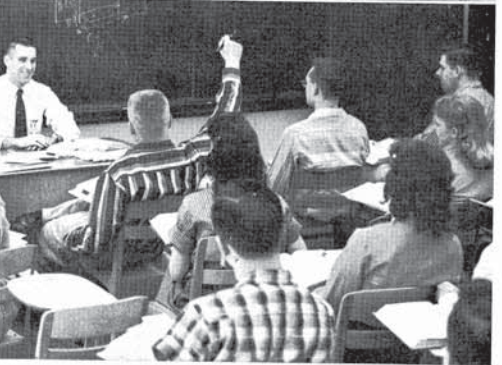
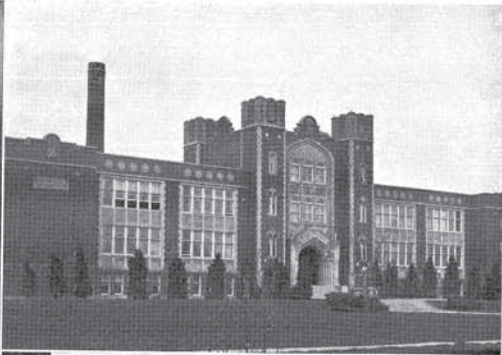
Editor-in-Chief	Barbara Hermling
Co-Literary Editors	Pegeen Linn, Susan Gilbert
Class Editor	Charlotte Nesmith
Activities Editor	Susan Doyle
Music Editor	James Moore
Sports Editor	James Johnson
High Lights Editor	Judy Irle
Co-Art Editors	Dorothy Havens, Deena Bender
Snapshot Editor	Linda Plankenhorn
Business Manager	Joan Phillips
Assistant Business Manager	Sherry Sarginson
Ad Manager	Bobbi Coffey
Ad Staff Members	Joann Meyers, Edith Jentschke, Pamela Paris
Ad Staff Tryouts	C. Edwards, R. Gerhart, P. Stillwell, M. White, M. Boggess, K. Armstrong, D. Harrison, D. Dayton, N. Martin, M. Scott, M. Phebus, M. Mizelle, S. Busey, M. Fears, N. Skeels, G. Goff, J. Powell, K. Thomas, L. Abbott, J. Black, P. Creighton, L. Boucher, C. Brockett, J. Dalby, P. Lang, B. Taylor, M. Flesner
Advisor	Mrs. Carol LeSeure
Photography	Urbana Camera Club, Pilon's Studio, <i>News-Gazette</i> , and <i>Courier</i>
Engraving	G. R. Grubb and Company
Printing	Twin City Printing Company
Covers	S. K. Smith Company

Table of Contents

Highlights	11
Activities	26
Sports	56
Music	86
Seniors	102
Underclassmen	126
Administration	146
Advertisements	158



URBANA HIGH SCHOOL
URBANA, ILLINOIS
ENROLLMENT 1037



Scenes and Activities



Around Urbana High

Highlights





The Rosemary Presents

GAYNEL WIDDOWS

"Miss Rosemary" of 1959

Gaynel, chosen for her poise, personality, and popularity, in addition to her natural friendliness, was crowned at our Christmas Dance, "Crystal Fantasy."



JUDITH TRACY



CAROLYN BATES



CAMILLE KEARNS



MARILYN COOK



Toni Altenbernd, Homecoming Queen

Homecoming

Miss Toni Altenbernd was crowned queen over all homecoming festivities by drum major, Jim Moore. She was elected by the seniors of Urbana High School. Her attendants were Stephanie Borleff, junior; Marlene Bates, sophomore; and Nancy Rissler, freshman.

Included in the third annual parade were four class floats, the attendants and the school administrators riding in convertibles; our cheerleaders, drill team, "Tigerettes," marching band, and majorettes; the cheerleaders and band from Decatur, our opponent; and many decorated cars.

Toni Altenbernd and Bob Hansen were the senior class chairmen and general chairmen for the parade. Other float chairmen were: juniors, Joanne Petty, Chriss Hastings, Jay Dan Stirewalt, Bob Roderick, and Sally Hopson; sophomores, Pete Wallace, Nancy Russell, Sharon Schwab, and Tom Walters; freshmen, Barb Adams, K. C. Ogata, Chuck Price, and Jean St. Clair.



OUR DANCES



TRI-HIGH DANCE
Katie Mowrer, Queen from Urbana



HOMECOMING DANCE
Toni Altenbernd, Queen, escorted by Rick Toth

CHRISTMAS DANCE
C. Bates, C. Kearns, G. Widdows, Miss Rosemary; J. Tracy, M. Cook



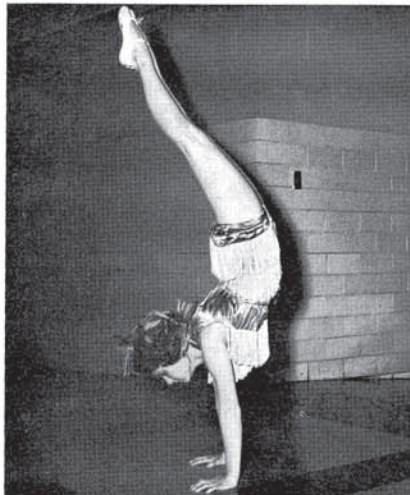
VICE-VERSA DANCE
Dick Baker, King
Crowned by Nancy Lyman



VALENTINE SWING
Dave Findlay, King
Susie Doyle, Queen

1959 PROM
Jan Tucker, Jim Long, Queen Carolyn Bates, King Ron Wilson, Bob Hansen, Judith Tracy





Myra Oehmke



Tom Earley, Bob Braun, John Bell

PTA AMATEUR SHOW

TEACHER TALENT SHOW

Mrs. Jo Hulett, Mrs. Pat Hill
Mrs. June Wedekind

Don McAllister, Robert Waller

Mrs. Mary Louise Robins



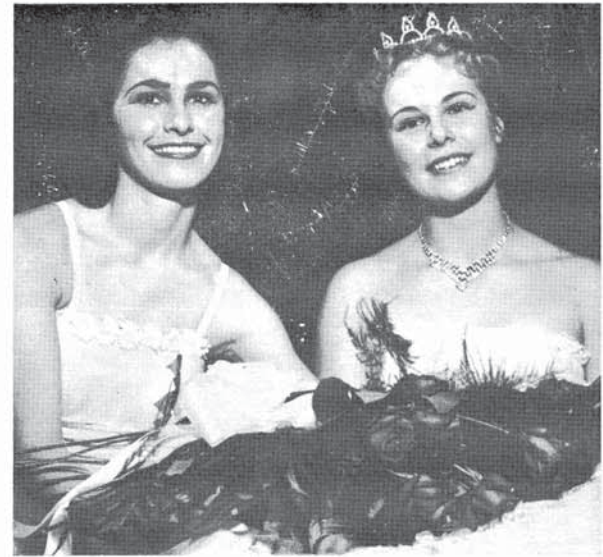
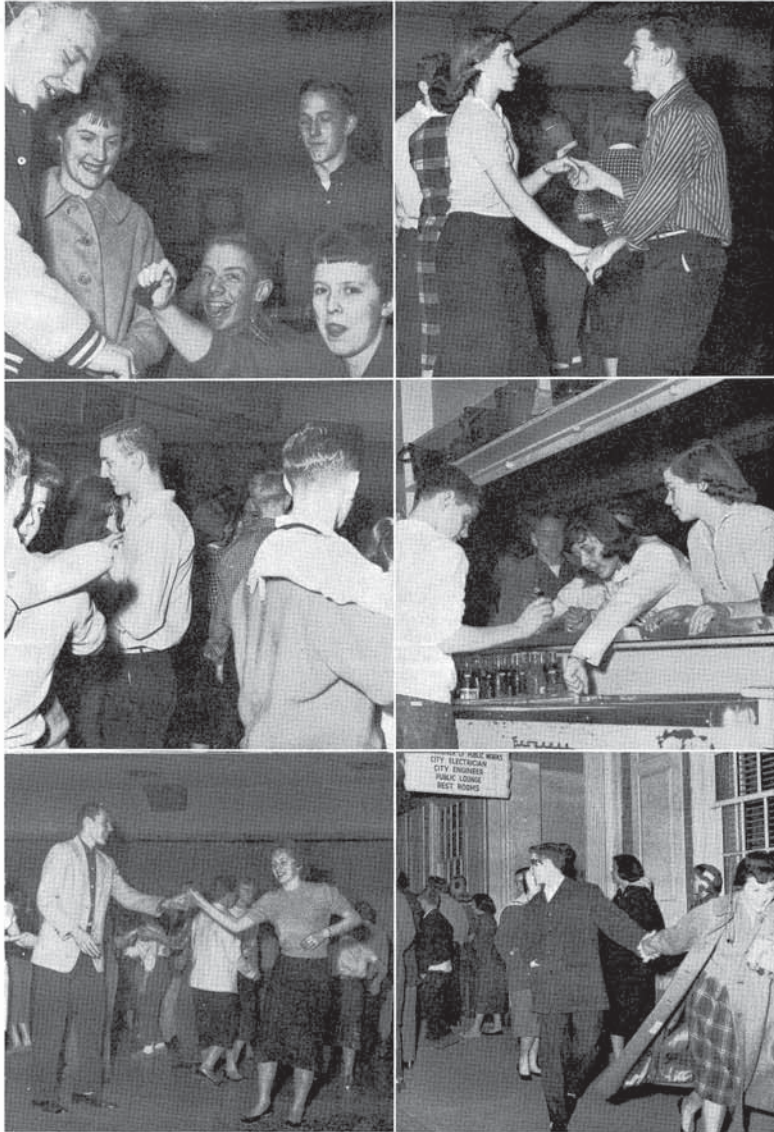
STAGE SHOW DANCERS

G. Longest, C. Kearns, M. Cook, J. St. Clair, M. Oehmke.

Stage Show

Stage show 1959 presented the best of Urbana High School's musical talent directed by Mr. Daniel J. Perrino. There were songs and original dances along with jazz and dance band specials. Rock and roll songs were mixed with modern classics, songs from stage shows, and some old time favorites.

Tigers' Den



Marianne with Cam Kearns

Marianne

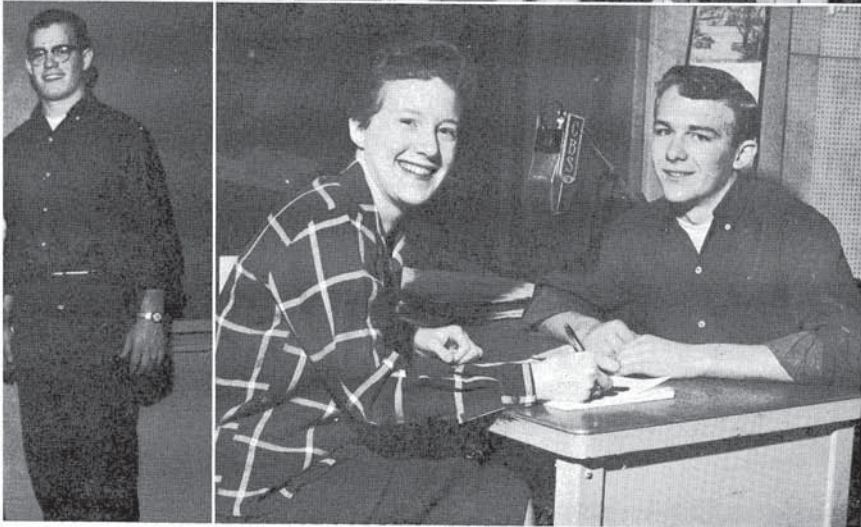
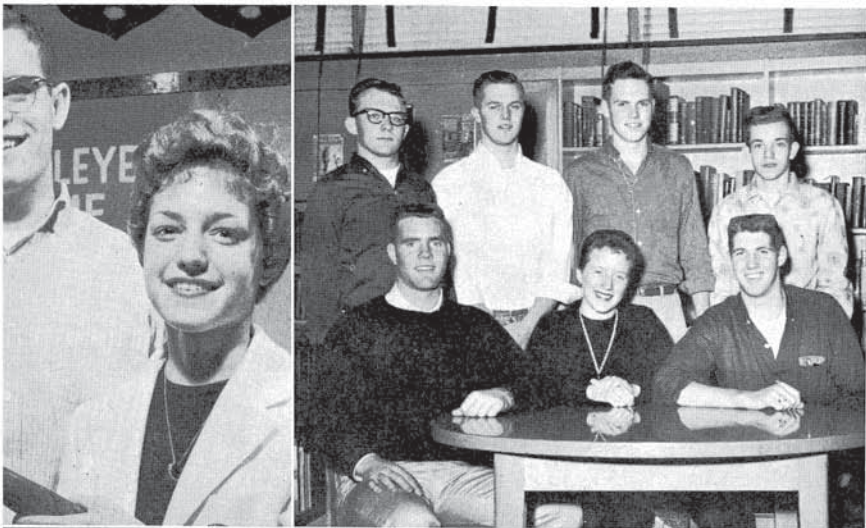
This year Urbana High School students experienced having a foreign exchange student. Marianne Lagerblad, our exchange student, is from Helsinki, Finland. She lived with junior, Vicki Barth.

Marianne was presented with a key to U.H.S. at the half-time of the Rantoul football game by our principal, Mr. Braun.

Our annual P.T.A. Talent Show was dedicated to Marianne.

Marianne received a hearty welcome from all of her new classmates at U.H.S. and will be missed by everyone next year.





R and SAR
dows, Bob Braun

GIRLS' and BOYS' STATE

Row 1: J. Bell, T. Shull, L. Larson. Row 2: E. Wade, C. Gordon, J. Williams, L. Wantland. Absent: K. Decker.



Row 1: J. Tracy, Co-Salutatorian; B. Hermling, Co-Valedictorian; C. Booth, Co-Salutatorian.
Row 2: A. Krober, Co-Valedictorian; M. Roberts, Co-Salutatorian; J. Seiler, Co-Salutatorian.

SAGAMORE

Row 1: K. Decker, S. Doyle, G. Widdows, K. Mowrer, J. Phillips, A. Arnold, C. Bates, J. Tucker, T. Shull, T. Altenbernd, L. Nolen, M. Jackson. Row 2: S. Dille, L. Johnson, G. Willman, M. Coon, B. Waechter, J. Tracy, C. Becker, K. Neupert, M. Price, C. Kearns. Row 3: K. Ball, D. Bender, R. Jones, C. Booth, D. Havens, S. Frye, S. Hahn. Row 4: J. Jarvis, L. Abbott, C. Nesmith, E. Jenkins, G. Marriott, C. Sands, B. Hermling, M. Roberts, B. Roberson. Row 5: J. Seiler, J. Long, H. Holmes, E. Wade, J. Johnson, B. Mynard, L. Petty, M. Tepper. Row 6: B. Braun, B. Hansen, S. Hopkins, L. Bridges, J. Williams, D. Findlay, L. Larson, J. Bell, B. Johnson, T. Earley, J. Moore.





ALPHA PSI OMEGA

Row 1: L. Abbott, T. Altenbernd, K. Ball, C. Bates, J. Bell, D. Bender, S. Boggess, C. Booth, B. Braun, K. Decker, S. Doyle. Row 2: D. Findlay, L. Gallagher, B. Hansen, B. Hatch, D. Havens, B. Hermling, J. Johnson, A. Krober, Vice President; J. Moore, K. Mowrer, K. Neupert, L. Nolen, J. Putebaugh, M. Roberts, Secretary. Row 3: C. Sands, J. Seiler, T. Shull, M. Stevens, M. Tepper, J. Townsend, J. Tracy, President; J. Tucker, L. Wantland, G. Widdows. Omega: M. Coon, President; J. Jarvis, E. Wade, B. Wiley, G. Willman.

PSI

Row 1: E. Thompson, President; L. Lientz, Vice President; D. Morris, Secretary; E. Baldwin, V. Barth, S. Bender, C. Brackett, P. Conerty, D. Dunkley, B. Frey, J. Garland, S. Gilbert. Row 2: D. Gillis, C. Gizez, J. Gronland, J. Hageman, C. Hoskins, J. Irl, S. Jenkins, C. Keller, J. Kratz, N. Lancaster, P. Linn, N. Lyman, W. Meike, M. Mizelle, A. Pettinga, J. Petty. Row 3: G. Reiss, L. Reynolds, J. Richards, J. St. Clair, S. Sarginson, P. Scott, J. Smith, N. Smith, D. Tuma, J. Walker, G. Wedding, V. Willman, C. Zimmer.



LAMBDA

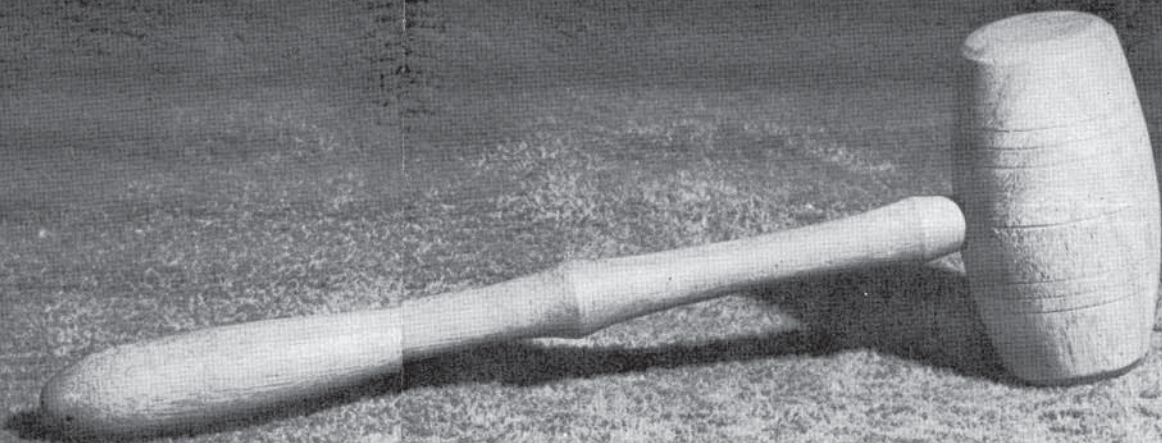
Row 1: S. Hinc, M. McCloy, M. Kammon, P. Stillwell, Vice President, M. White, K. Perry, B. Coles, H. Weeks, C. Wandell. Row 2: B. Lyman, M. Pacenta, N. Russell, B. St. John, B. Lynam, Secretary; M. Bowman, K. Hansen, J. Myers, A. Creamer, A. Brookens, K. Flanigan, J. French, A. Witter. Row 3: D. Hensler, A. Clemens, P. Wallace, J. Hopkins, D. Powell, G. Storm, President; M. Krober, B. Hult, L. Radabaugh. Absent: R. Arata, D. Dixon.

ALPHA

Row 1: J. Black, M. Boggess, D. Crouse, J. Dalbey, D. Dayton, V. Dunkley, G. Gladding, Secretary; J. Hageman. Row 2: A. Hanson, J. Harnsberger, D. Harrison, L. Heater, J. Jacobs, S. Knell, T. Konradt, M. Lavenhagen, N. Martin, C. Mizelle, C. Mussey. Row 3: S. Novick, M. Phebus, C. Potter, C. Price, President; R. Pryor, R. Reiss, A. Renfrew, L. Rowe, K. Thomas, Vice President.



Activities



Activity



GAY WIDDOWS - STUDENT COUNCIL

TONI ALTENBERND - ECHO - GAA

BARB HERMLING - ROSEMARY

CHAR NESMITH - FTA

BOB HANSEN - BAND

KATIE MOWLER - ECHO

KATHE DECKER - THESPIANS

DICK WARREN - "U" CLUB

BOB BRAUN - TIGERS DEN

CARL ALLMAN - D.O.

DEE BENDER - ORCHESTRAS

Leaders



CAM KEARNS - TERRAPIN

JUDITH TRACY - FRENCH CLUB

JOHN BELL - CHORUS

DAVE FINDLAY - CAMERA CLUB

D.L. HAVENS - SPANISH CLUB

SALLY FRYE - ART CLUB

BONNIE WAECHTER - FHA

SHARON DILLEY - S.K.

NANCY RUSSELL - LATIN CLUB

MIKE TEPPER - SCIENCE FICTION CLUB



STUDENT COUNCIL MEMBERS

Row 1: L. McGehe, K. Mowrer, G. Widdows, T. Shull, J. St. Clair. *Row 2:* D. Morris, N. Lyman, C. Kearns, M. Coon, K. Ball, L. Johnson, M. Bates, N. Russell, J. Powell, H. Williams. *Row 3:* B. Taylor, J. Garland, D. Peters, J. Walker, E. Wade, D. Findlay, B. Hansen, B. Corray, E. Keller, C. Price, C. Mizelle, J. Williamson, B. Adams. *Row 4:* N. Risser, M. White, L. Nolen, P. Byard, N. Lancaster, C. Hutts, R. Trotter, J. French, S. Schwab, L. Lyman, K. Flanigan, S. Gallagher, D. Cobble, G. Harlow, Mr. Davis, Sponsor.

Student Council

The first Student Council project for this year was the annual orientation day for the freshmen and new students.

Student Council sent delegates to many meetings and conventions this year, including the district S.C. Convention and the State S.C. Convention in Chicago. Nancy Russell, a sophomore, was elected treasurer at the district convention.

For the first time, U.H.S. decided to send a student abroad. After careful screening, four finalists were selected. From these four, Jan St. Clair was chosen to go abroad during the summer. In addition to the expense of sending an Urbana student overseas, there was the expense of bringing another foreign student here, as the student body again elected to do. There were many money-making projects carried out during the year. Dilys Morris and Karen Ball were co-chairmen of the Fund Raising Program. At an all-school auction, the fund netted over \$500 from such items as candy made by Mr. Braun, a pizza, 10 dances at the Tigers' Den, and certificates to get out of detentions. Two volleyball games, one between the senior boys and the faculty men and the other between the senior girls and the faculty women, brought in more money to swell the fund. Other projects were bake sales and the Hard Times dance.

OFFICERS

Larry McGehe, Parliamentarian; Marianne Lagerblad, Exchange Student; Jan St. Clair, Secretary; Gaynell Widdows, President; Katie Mowrer, Vice-President; Mr. Davis, Sponsor; Terry Shull, Treasurer.



BOOSTER PIN SALE

Jean Rasmussen, Joyce Powell, Gail Longest, Ruth Trotter, John Smetana.



BAKE SALE

Foreign Exchange Student Program
Chuck Roderick, Chuck Price.





Rosemary Editors

Pegcen Linn, Co-Literary Editor
 Barb Hermling, Editor-in-Chief
 Mrs. C. LeSeure, Sponsor
 Susan Gilbert, Co-Literary Editor

"There's Rosemary . . .

Rosemary had a new sponsor this year, Mrs. Carol LeSeure. Although this was her first year of teaching as well as her first club sponsorship, she advised the staff with an experienced hand.

The staff again co-sponsored the Christmas dance, "Crystal Fantasy," which sported the prettiest decorations ever. Gaynell Widdows was crowned Rosemary Queen and four girls attended her.

BUSINESS MANAGERS AND EDITORS

Joan Phillips, Business Manager; Deena Bender, Co-Art Editor; Bobbi Coffey, Ad Manager; Dorothy Havens, Co-Art Editor; Linda Plankenhorn, Snapshot Editor. *Absent:* Sherry Sarginson, Assistant Business Manager.

TYPISTS

Mary Jackson, Carolyn Sands, Mary Jo Coon, Gerry Ann Marriott.



Division Editors

Jim Johnson, Sports Editor; Charlotte Nesmith, Class Editor; Susan Doyle, Activities Editor; Jim Moore, Music Editor. *Absent:* Judy Irl, Highlites Editor.



" . . . That's for Remembrance." – Shakespeare

For the first time in several years, the Rosemary has a general rather than a specific theme. Each division page symbolizes a phase of school life.

During the year, the "behind-the-scenes" business managers were selling Rosemarys, the ad staff was industriously attacking the local businessmen, and the photographers were busily snapping pictures. The division editors were kept on their toes trying to get each section laid out by the deadline.

AD STAFF

Row 1: C. Edwards, R. Gerhart, B. Coffey, Ad Manager; P. Stillwell, M. White, M. Boggess. Row 2: K. Armstrong, D. Harrison, D. Dayton, N. Martin, M. Scott, M. Phebus, M. Mizelle, S. Buscy. Row 3: M. Fears, N. Skeels, G. Goff, J. Powell, K. Thomas, L. Abbott, J. Black, P. Creighton. *Absent:* L. Boucher, C. Brockett, J. Dalby, E. Jentschke, P. Lang, J. Meyers, B. Taylor, P. Paris, M. Flesner.





Echo

EDITORS AND SPONSOR

Toni Altenbernd, Co-Editor-in-Chief; Mr. S. Hynes, Sponsor; Katie Mowrer, Co-Editor-in-Chief.

Echo

At the beginning of the year many reporters competed for positions on the news and feature staffs. Only 28 were selected. The *Echo* experimented with new and more modern ideas in layout, features, and writing. They used floating nameplate for the first time. By dropping various low interest short news or filler items, they were able to raise the literary quality of the paper. Serious interviews and a new addition to the sports page, "Stars and Stripes," were important improvements on the paper. They have also gone after interesting and unusual feature and human interest ideas. The staff may look back at a very successful year.

SPORTS and MANAGERS

L. Radebaugh, Asst. Sports Ed.; B. Sink, Photographer; R. Ebert, Sports Ed.; M. Altenbernd, Ad. Mgr.



EDITORS

J. Tracy, Feature Ed.; S. Bender, Asst. Feature Ed.; T. Shull, Senior Celegs.; C. Bates, Tiger Scratches; B. Lyman, Copy Ed.; M. Bowman, Asst. News Ed.; N. Smith, News Ed.



REPORTERS

Row 1: A. Creamer, J. Irie, P. Scott, K. Langhaar, N. Russell, B. Taylor. Row 2: C. Booth, J. Allen, S. Langhoff, Jan St. Clair, J. Jacob, D. Dunkley, B. Baldwin, J. Trumen, B. Hermling. Row 3: F. Mynard, N. Kohn. Absent: J. Black, S. Frye.

Quill and Scroll

Quill and Scroll is the National Journalistic Honorary. To become a member, a student must have a high scholastic average, do outstanding work on a publication, be a junior or senior, and be approved by the local and national Quill and Scroll board. Each member is given a Quill and Scroll pin and a card signifying that he is a member of the society.

Row 1: T. Altenbernd, B. Hermling, K. Mowrer. Row 2: J. Tracy, S. Doyle, D. Bender, B. Coffey, T. Shull, J. St. Clair, C. Bates. Row 3: J. Irie, C. Nesmith, J. Johnson, B. Hansen, P. Linn, S. Gilbert. Absent: J. Moore, D. Havens, N. Smith, R. Ebert, B. Johnson.

