



**OFFICERS**

Dorothy Havens, Sec.; Katie Mowrer, Pub. Ch.; Jim Whit, Pres.; Claire Booth, Treas.; Marianne Lagerblad, V.P.

## SENIOR CLASS

As the senior class of 1959 walks down the aisle to *Pomp and Circumstance*, you can see that they are thinking of their last four years at Urbana High School.

Outstanding in their minds is the thought of their own Marianne, the first exchange student to visit U.H.S. Marianne and the other seniors are probably remembering many of the same things.

The seniors proved themselves capable orators when class election time came around. For the first time, speeches, instead of skits were put on by parties and independents. The capable officers that were elected handled their responsibilities well.

Miss Harris agreed to write music for an Alma Mater if one of the students would supply the words. The seniors contributed their share of lyrics.

Everyone appreciated the beautiful prom, *Haru Matsuri*, given for them by the juniors.

Tackling rhetoric words, losing to the faculty in volleyball games, working on the homecoming float, backing the boys at games, studying on research papers, along with music and parties made this year a memorable one.

**Loralce Jean Abbott**

*likeable—jocund—ambitious*

"Lori"—*Rosemary* 4; Alpha 1; Lambda 2; FTA 1, Hist. 2; Vice Pres. 3, 4; Art Club 4; SK 1; GAA 1, 2; Pep Club 2; Office Help 1; Sagamore; Alpha Psi Omega.

**Beverly Gail Allen**

*blond—genial—adorable*

"Bev"—Orchestr. 3, 4; SK 1, 2, 3, 4; GAA 1, 2, 3, 4; Library 1, 2; Pep Club 2; Band 1, 2, 3, 4; Band Ens. 4.

**Carl Wm. Allman**

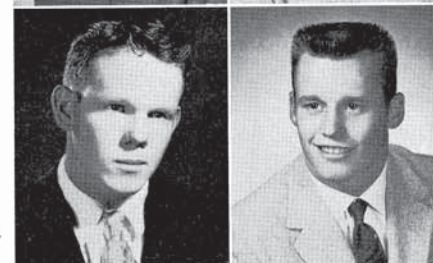
*cars—whiz—around*

"Red"—DO 3, Pres. 4.

**Larry J. Allen**

*laughing—jovial—athletic*

Transfer from Central High School, Cape Girardeau, Missouri; Student Council 1; "U" Club 3, 4; Spanish Club 2, 3; Football 1, 2, 3, 4; Track 1, 2, 3, 4.



**Mark A. Anderson**

*man of astute ability*

Alpha 1; Lambda 2; Student Council 1; Latin Club 1, 2; Camera Club 1, Sec. 2, 3, 4; Track 2; A Cappella 1, 2, 3, 4; Boys Chorus 3; Madrigals 1, 2, 3, 4; Choral Ens. 3; Choral Soloist 2, 3.

**Toni Altenbernd**

*tremendous ability*

*Echo* 1, Asst. News Ed. 2, News Ed. 3, Co-ed-in-chief 4; Alpha 1, Lambda 2; Psi 3; Quill and Scroll 3, 4; Terrapin 3, Sec. 4; Orchestr. 1, 2; Delta Sigma 1, 2, 3; French Club 1, 2; Art Club 2; SK 1, 2, 3, 4; GAA 1, 2, Pt. Chrm. 3, Pres. 4; Pep Club Pres. 2; Homecoming Queen 4; Homecoming Chrm. 3; Gen. Homecoming Chrm. 4; Corridor Gossip 4; Sagamore; Alpha Psi Omega.

**Andrea Jacqueline Arnold**

*attractive—jubilant—active*

Spanish Club 1, 2, 4; Pep Club 2; SK 1, 2, 3, 4; GAA 1, 2, 3; Co-chr. float 2; Res. Cheerleading 2; Twirling 3, Asst. Head 4; Band Ens. 3, 4; PTA Talent Show 2, 3; Sagamore

**Richard W. Baker**

*daring—witty—brave*

"Dick"—Transfer from Quincy High School; "U" Club 3, Treas. 4; Football 1, 4; Basketball 1; Baseball 2; Wrestling 2, 3, 4; Vice Versa King 4.

**Karen Lee Ball**

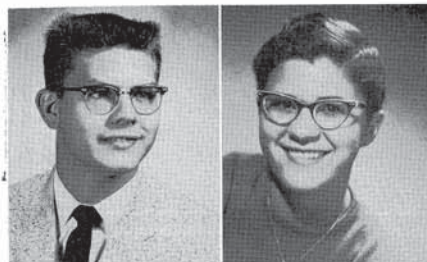
*cute—loyal—bright*

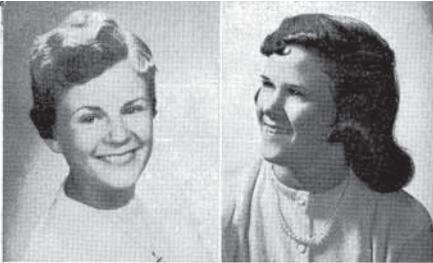
Lambda 2; Psi 3; Student Council 1, 3, 4; Latin Club 1, 2, 3, 4; FTA 2, 3, 4; Art Club 2; SK 1, 2, 3, 4; Pep Club 2; Office Help 1, 2, 3; PTA Talent Show 2, 3; Girls' Chorus 1; Sagamore; Alpha Psi Omega.

**Eugene Raymond Barthelmy**

*energetic—ready—bashful*

"Bart"—Spanish Club 1, 2; Science Club 1, 2, 3; Wrestling 1, 2; Band 1, 2, 3; Cafeteria Help 1, 2, 3; PTA Talent Show 4.





**Carolyn Ileen Bates**

*cheerful—Independent—bubbling*  
"Grogolyn"—Echo 3, 4; Lambda 2, Psi 3; Quill and Scroll 4; Student Council 1, 2; Tri-Hi Council 2; French Club 1, 2; FTA 3, 4; SK 1, 2, Jr. Rep. 3; Sr. Rep. 4; GAA 1, 2; Pep Club 2; Class President 1; A Cappella 4; Other Chorus 1, 2, 3; Choral Ens. 2, 3, 4; Court of Honor 1; Rosemary Queen Att. 4; Valentine Court 4; Tigers Den Council 2, 3, Sec. 4; Tigerettes 3, 4; Tri-Hi Stunt Show 2; PTA Talent Show 2, 3; Sagamore; Alpha Psi Omega.

**Linda Susan Baumgardner**

*lively—small—brevity*  
"Susie"—Transfer from University High School; Terrapin 1; Orchest 1; Latin Club 2; Art Club 2; SK 2; Band 1; Choral Ensembles 1, 2, 3; Office Help 2, 3.



**Charlotte M. Becker**

*coy—merry—blond*  
"Char"—GAA 1, 2, 3; A Cappella 3, 4; Chorus 1, 2; Choral Ens. 2, 3, 4; Office Help 4; Pep Club 2; Sagamore.

**Michael Allan Bays**

*mischievous—amicable—best*  
"Mike"—Spanish Club 1, 2; Pep Club 2; Football 1, 2, 4; Track 3; Wrestling 3; Golf 1, 2; Basketball Manager 1; A Cappella 1, 2, 3, 4; Boys' Glee Club 2, 3, 4; Madrigals 2; Choral Ens. 2, 3, 4.

**Robert Louis Braun**

*rate—loquacious—buoyant*  
"Bob"—Alpha 1; Lambda 2; Psi 3; "U" Club 2, 3, 4; Thespians 3, 4; Delta Sigma 3, 4; French Club 1, 2; Football 1, 2, 3, 4; Basketball 1; Track 1, 2, 3; Class Vice Pres. 1; Class President 2; "Our Hearts Were Young and Gay"; Band 1, 2, 3, 4; Band Council 3, 4; Band Ens. 4; Tigers Den Council 1, 2, Jr. Chr. 3; Sr. Chr. 4; Hatchet Orator 3, 4; SAR; Sagamore; Alpha Psi Omega.

**Lonnie E. Bridges**

*likeable—enlightening—buddy*  
"U" Club 3, 4; Football 1, 2, 3, 4; Track 1, 2, 3; Sagamore.

**Peggy Ann Brooks**

*pleasant and becoming*  
"Peg"—SK 1, 2, 3, 4; GAA 1; A Cappella 4; Concert Choir 3; Pres. 4; Choral Ens. 4; Talent Show 1, 2, 3; Cafeteria Help 2.

**Russell Lynn Brown**

*rocky—lively—bold*  
"U" Club 3, Sec. 4; Library Club 3; Football 1, 2, 3, Capt. 4; Track 1, 2, 3; Swimming 1, 2; Wrestling 2, 3, 4.



**Nancy Collette Brown**

*natural—calm—books*  
Band 1, 2, 3; DO 4.



**James Joseph Burns**

*jeans—joyful—bashful*  
"Joe"—Golf 1.



**Joan Arline Burt**

*jolly—aloha—brevity*  
"Jo"—FHA 1, 2, Sec. 3; SK 1, 2, 3, 4; GAA 1, 2, 3, 4; Pep Club 3.



**Katherine Ann Cain**

*kindly and considerate*  
"Katie"—Transfer from Roodhouse High School; FHA 1; Science Club 1; SK 2, 3, 4; Library Club 1; Pep Club 1; Class Sec. 1; Other Chorus 1, 2, 3; Choral Ens. 2; Office Help 2, 3, 4.

**John Sinclair Bell**

*gentleman—sociable—brainy*  
Alpha 1; Lambda 2; Psi 3; Student Council 2; Treas. 3; "U" Club 2, 3, 4; Football 1, 2, 3, 4; Basketball 1, 2, 3, Co-Capt. 4; Track 1, 2, 3, 4; A Cappella 1, 2, 3, Pres. 4; Boys' Glee Club; Madrigals 1, 2, 3, 4; Choral Ens. 3, 4; Tiger's Den Council 2, 4, Treas. 3; Boys' State 3; All State Chorus; Sagamore; Alpha Psi Omega.

**Decna Louise Bender**

*darling—lectards—becoming*  
"Dec"—Rosemary Co-art ed. 4; Alpha 1; Lambda 2; Quill and Scroll 4; Orchest 3, Pres. 4; Thespians 4; Delta Sigma 2, 3, 4; French Club 1, 2; Latin Club 3; FTA 2, lib. 3, 4; Art Club 2, Vice Pres. 3, Sec. 4; SK 1, 2, 3, 4; GAA 1, 2; Pep Club 2; Class Program Chairman 3; "Unto Thy Doors"; Girls' Chorus 1; Tri-Hi Talent Show 3; PTA Talent Show 3; Stage Show 3; Sagamore; Alpha Psi Omega.

**Mary Fae Black**

*merry—friendly—bashful*  
Lambda 2; Spanish Club 1, 2; SK 1, 3, 4; GAA 1; Pep Club 2; Band 1.

**Roy David Bloemker**

*reliable—devoted—brave*

**Claire Ellen Booth**

*camaritime—energetic—"boots"*  
Echo 1, 2, 3, 4; Alpha 1; Lambda 2; Psi 3; Student Council 1, 2; Terrapin 3, 4; Orchest 2; Thespians 3, Vice Pres. 4; Delta Sigma 1, 2, 3, Vice Pres. 4; Latin Club 1, Sec. 2, Ex-Off. 3; Art Club 1; Science Fiction Club Pres. 2, 3; SK 1, 2, 3, 4; GAA 1, 2, 3, Sr. Advisor 4; Pep Club 2; Class Treasurer 2, 4; "The Curious Saage"; A Cappella 3, 4; Other Chorus 1, 2; Madrigals 3, 4; Choral Ens. 2, 3, 4; Choral Soloist 2; Speech Contest 3, 4; Tigerettes 4; PTA Talent Show 2, 3; Tri-Hi Stunt Show 2, 3; Stage Show 3; Sagamore; Alpha Psi Omega; Co-Salutatorian.

**Samuel Forest Boggess**

*southern—frank—brains*  
Transfer from Pope County High; Class Reporter-newspaper PCH; Yearbook 1, 3; National Honor Society 3; Student Council 3; Science Fiction 4; Pep Club 1, 2; Baseball 1, 2, 3; Class President 2; Chess Club Pres. 1, 2; Honor Student 1, 2, 3; Class Play 3; Alpha Psi Omega.



**Marlliss Jean Byard**

*mischief—jokes—boys*  
FHA 1; SK 1, 2, 3, 4; GAA 1, 2, 3; Pep Club 3; A Cappella 3; Chorus 1, 2; Office Help 4.

**Terry Canavan**

*"Teean"—remarkable—cowboy*  
Football 1, 2; Cross-Country 3.



**Joseph Brandon Clancy**

*jesting—bright—capable*  
"Joe"—Psi 3; Delta Sigma 2, 3, 4; Latin Club 1, 2; Football 1, 2, 3, 4; Track 2, 3; Wrestling 1, 2, 3; Golf 4; "Our Hearts Were Young and Gay."



**Barbara Lynn Coffey**

*blithe—lovely—congenial*  
"Bobbi"—Rosemary 3, Ad Manager 4; Quill and Scroll 4; French Club 1, 2, 3; FTA 4; SK 1, 2, 3, 4; GAA 1, 2, 3, 4; A Cappella 1, 2, 3, 4; Other Chorus 1, 2, 3, 4; Choral Ens. 2, 3, 4; Choral Soloist 2, 3, 4; PTA Talent Show 4; Talent Show 2; Stage Show 2.

**Marilyn Lee Cook**

*merry-maker—laughter—cheerleader*  
"Cookie"—Student Council 1, 2, 3; SK 1, 2, 3, 4; GAA 1, 2, 3, 4; Pep Club 2; Reserve Cheerleader 1, 2; Varsity 3, 4; Co-Captain 4; Rosemary Queen Attendant 4; Valentine Court 1, 4; Office Help 4; Stage Show 1, 2, 3, 4; PTA Talent Show 1, 2.

**Mary Jo Coon**

*meritful—jocularity—courteous*  
Rosemary Typist 4; Alpha 1; Student Council 1, 2, 3, 4; Latin Club Treas. 2, 3, 4; FTA 3, 4; SK 1, 2, 3, 4; GAA 1, 2; Pep Club 2; PTA Talent Show 3; Sagamore; Omega Pres. 4.

**Jerrell L. Dickinson**

*just—lucky—dependable*  
"Jerry"

**Jim F. Delaney**

*social—faithful—delightful*  
Transfer from Champaign; "U" Club 4; Library Club 1, 2, 3; Football 2; Basketball 1, 2, 3, 4; Track 3, 4; Cross-Country 4.

**Sharon Lee Dilley**

*sensible—lively—daring*  
Terrapin 2, 3, 4; SK 1, 2, 3; President 4; GAA 1, 2; Pep Club 2; Band Ens. 3, 4; Baton Twirler 3, 4; Cheerleading 1, 2, (Reserve); Court of Honor 2; Office Help 4; PTA Talent Show 2, 3; Sagamore.

**Marvin Lloyd Drennan**

*monumental—likeable—determination*  
"Marv"—FFA 1, 2; DO 4; Track 1, 2, 3; Cross-Country 1; Choral Ensemble 2; Cafeteria Help 1, 2, 3, 4.



**Susan Jane Doyle**

*sentimental—joyful—delicate*  
"Susie"—Echo 3; Rosemary Activities Editor 4; Alpha 1; Lambda 2; Psi Vice Pres. 3; Quill and Scroll 4; Delta Sigma 3, 4; Art Club 2, Sec. 3; Vice Pres. 4; SK 1, 2, 3, 4; GAA 1, 2; Pep Club 2; Voice Choir Christmas Assembly 3; Band Asst. Lib. 1, 2, 3; Band Coun. 4; Band Ens. 1, 2, 3, 4; Valentine Queens 4; Tigerettes 4; PTA Talent Show 3; Tri-Hi Talent Show 3; Stage Show 3; Sagamore; Alpha Psi Omega.

**James Pell Douglas**

*jolly—pleasant—dairyman*  
"Jim"—FFA 1, 2, 3; Library Club 1, 2, 3, 4; Cafeteria Help 1.

**Virginia Ann Dorsett**

*vigilance—alert—dependable*  
FHA 1, 2; Treas. 3, 4; SK 3; Pep Club 2; Cafeteria Help 1, 2; Orchestra 1, 2, 4; Vice Pres. 3.

**John Guy Duker**

*judicious—genuine—distinguished*  
Band 1, 2, 3, 4; Band Soloist 2, 3, 4; Dance Band 2, 3; Band Ens. 1, 2, 3, 4.

**Thomas David Earley**

*hip—dancer—extraordinary*  
"Waup"—Alpha 1; Lambda 2; Student Council 1, 2; "U" Club 2, 3, 4; French Club 1; Sgt. at Arms 2; Football 1, 2, 3, 4; Basketball 1, 2, 3, 4; Track 1, 2, 3, 4; Band 1, Band Council 2, 3, 4; Band Soloist 2; Band Ens. 1, 2, 3, 4; Tiger's Den Council 1, 2, 3; Treasurer 4; Stage Show 2, 3, 4; Dance Band 2, 3, 4; Sagamore.

**Floyd Eckerty**

*fancy-free—comic—excited*  
"Butch"—Science Club 1, 2; Swimming 1; Library Club 1.

**Mark Charles Corkins**

*meditative—creative cartoonist*  
"Corky"

**Lawrence Eugene Crist**

*literate—enjoyable—chrome*  
"Larry"—Band 1, 2, 3.

**Margaret Kathleen Decker**

*marvelous—knowledge—dramatics*  
"Kathe"—Transfer from East High School, Wichita, Kansas; Alpha 1; Lambda 2; Psi 3; Student Council 1; Thespians 3; President 4; Delta Sigma President 4; French Club 3; Secretary 4; Latin Club 1, 2; FTA 3; SK 3, 4; "Years Ago" 3; "Curious Savage" 4; "The White Lawn" 4; A Cappella 3, Student Director 4; Chorus 1, 2; Madrigals 3, 4; Ensembles 2, 3, 4; Court of Honor 3; Girls' State 3; Speech Contest 3, 4; Sagamore; Alpha Psi Omega.

**Mary Catherine Davis**

*maidenly—comely—diamonds*  
"Cathy"—Transfer from Unity High School, Tolono, Ill.; FHA 1; SK 2, 3, 4; GAA 3, Sec.-Treas. 4; Pep Club 1, 2; "Tchin' to Get Hitched"; Chorus 1, 2; Triple Trio 1; Cheerleader 1; Court of Honor 2; Valentine Attend. 1; Homecoming Attend. 3; Office Help 4.

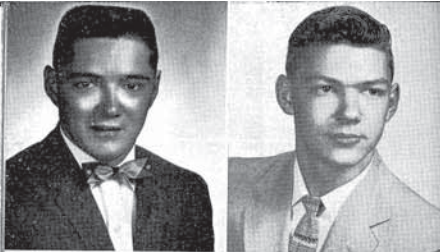
**Kenneth E. Davis**

*keen—earnest—determined*  
Camera Club 4; Wrestling 1, 2, 3, 4; Science Club 1, 2; Swimming 1.

**Martha Rose Dable**

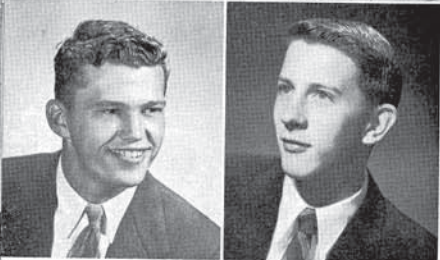
*mirthful—realistic—daring*  
"Marty"—Transfer from Nathan Hale High School; Pep Club 2; Jr. Red Cross 2; DO Sec. 4.





**Gary Dwayne Elam**  
*gay—dresser—enjoyable*  
Library Club 4; Chorus 1.

**Donald Empson**  
*dependable—enlightening—enjoyable*  
"Don"—Cross-Country 3.



**David L. Fryer**  
*decorous—likeable—flutterer*  
Basketball 2.

**David Alexander Findlay**  
*dandy—aquatic—firm*  
"Dave"—Alpha 1; Lambda 2; Psi 3; Student Council 4; "U" Club 2, 3, 4; Science Club 1, 2; Camera Club 1, 2, Pres. 3, 4; Football 1, 2, 3, 4; Track 1, 2, 3; Swimming 1, 2, 3, 4; Golf 4; Valentine Dance King 4; Sagamore; Alpha Psi Omega.

**Linda Louise Gallagher**  
*lyrical—literary—genuine*  
"Lucky Lindy"—Transfer from Rockville High School; Lambda 2; Psi 3; Band 1; A Cappella 2, 3; Other Choruses 1; Choral Ens. 1; Alpha Psi Omega.

**Marvis Ann Fitzsimmons**  
*mischievous—attractive—flirtatious*  
SK 1, 2, 3, 4; GAA 1, 2, 3; Pep Club 2; Band Ens. 3, 4; Baton Twirler 2, 3, Head Majorette 4; Reserve Cheerleading 1.

**Beverly Gerds Richardson**  
*bride—admirable—gentle*

**Sally Jean Frye**  
*sophistication—jaunty—fine*  
Echo 2, 3, 4; Quill and Scroll 3, 4; Thespians 3, 4; Delta Sigma 2, 3, 4; French Club 1, 2; Art Club 2, 3, Pres. 4; SK 1, 2, 3, 4; GAA 1, 2; Pep Club 2; Class Sec. 3; "Remarkable Incident at Carson Corners" "Unto Thy Doors." "Song of Glory"; Band 2, 3; Girls' Chorus 1; Speech Contest 3, 4; PTA Talent Show 3; Tri-Hi Stunt Show 3; Stage Show 3; Sagamore.

**M. Kyle Gerlach**  
*masterful—keen—good-looking*  
Football 1, 2; Wrestling 1, 2.

**Theda Glenn**  
*typist—adaptable—generous*  
"Tig"—ETA. 1, 2, 3, 4; SK 1, 2, 3, 4; GAA 1; Library Club 1, 2nd Vice Pres. 2, 1st Vice Pres., Vice Pres. E. Ill. Cent. Div., 3, Pres. 4; Cafeteria Help 1, 2, 3, 4; Office Help 1, 2, 3.

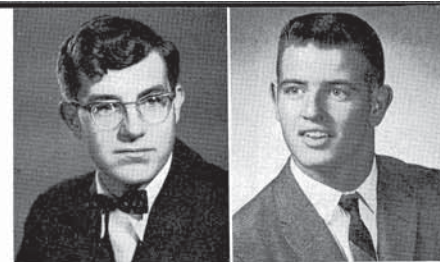


**Roger Kent Gilliland**  
*relaxed—kind—grateful*  
"Bud"—Track 1, 2; Spanish 1, 2.

**Paul Gritten**  
*participator—energy—great*  
"Gridiron"—Transfer from Pharr, Texas; "U" Club 4; Football 1, 2, 3, 4; Baseball 1, 2, 3; Basketball 1, 2, 3, 4; A Cappella 4; Quartet; Soloist; Ensemble; Madrigals 1.

**Suzanne Elise Hahn**  
*sincere—enterprising—homemaker*  
"Sue"—Student Council 1, 2; Spanish Club 3; FTA 1, 2, Hist. 3, Sec. 4; SK 2, 3, Treas. 4; GAA 1, 2, 3; Pep Club 2; Chorus 1; Sagamore.

**Carol Ann Grief**  
*cheerful—agreeable—gentle*  
Art Club 3.



**Charles David Gordon**  
*cowboy—distinctive—gallant*  
"Chuck"—Football 1, 2, 3, 4; Basketball 1, 2; Track 1, 2, 3, 4; A Cappella 1, 2, 3, 4; Boys Chorus 3, 4; Choral Ens. 1, 2, 3, 4; Boys' State 3; Madrigals 3, 4.

**Robert Hansen**  
*respected—handsome*  
"Bob"—Transfer from Champaign Junior High; Rosemary Music Ed. 3; Lambda Pres. 2; Psi 3; Quill and Scroll 3, 4; Student Council 2, 4, Parl. 3; Latin Club 2, Pres. 3; Track 2; Band 2, 3, Pres. 4; Band Soloist 2, 3, 4; Band Ens. 1, 2, 3, 4; Retro Ed. 1; Homecoming Chm. 3, 4; Sagamore; Alpha Psi Omega.

**William E. Harris**  
*willing—easy—handyman*  
"Bill"—Science Fiction 4; Library Club 3, 4; Cafeteria Help 2, 3, 4; Orchestra 1, 2, 4; Orchestra Ens. 4.

**Robert L. Hatch**  
*rebounding—lusty—husbandry*  
"Bob"—Alpha 1; Lambda 2; Student Council 3; FFA 2; Tennis 3, 4; Rosemary Rep. 1; Class President 3; Band 1, 2, 3, 4; Band Ens. 3, 4; Alpha Psi Omega.

**Daisy Fern Hatter**  
*dimpled—future—homemaker*  
"Fern"—SK 1, 2, 3; GAA 1, 2; Orchestra 1, 4, Sec. and Treas. 2; Office Help 3.

**Dorothy Louise Havens**  
*ducky—leisurely—happy*  
"D.L."—Echo 2, 3, 4; Rosemary Co-Art Ed. 4; Alpha 1; Quill and Scroll 4; Spanish Club 1, 2, 3, Pres. 4; Art Club Treas. 2, Pres. 3, 4; SK 1, 2, 3, 4; GAA 1, 2; Pep Club 2; Class Secretary 4; Band 1, 2, 4; Council 3; Band Ens. 2, 3, 4; Stage Show 3; Sagamore; Alpha Psi Omega.



**Barbara Jane Hermling**

*busy-judicious-honors*  
"Babs"—*Echo* 1, 2, 3, 4; *Rosemary* 1, 2, Highlights Ed. 3, Ed.-in-chief 4; Alpha 1; Lambda 2; Psi 3; Quill and Scroll 3, 4; Student Council 1, 2; Thespians 2, 3; Sec.-Treas. 4; Delta Sigma 1, 2, 3, Sec.-Treas 4; French Club 2, Sec. 3, Vice Pres. 4; Latin Club 1; FTA 2, 3, 4; Art Club 3, 4; SK 1, 2, 3, 4; GAA 1, 2; Pep Club 2; "Seven Sisters"; "Our Hearts Were Young and Gay"; "Unto Thy Doors"; "Years Ago"; "Angel Street"; "The Curious Savage"; Girls' Chorus 1, 2; Speech Contest 2, 3, 4; PTA Talent Show 1; Sagamore; Alpha Psi Omega; Co-Valedictorian.



**Harold Zachary Holmes, Jr.**

*hearty-zealous-hobbies*  
"Hal"—"U" Club 4; Gymnastics 2, 3, 4; Tiger Mascot 3, 4; Sagamore.



**Stephen Allen Hopkins**

*superior-apt-handsome*  
"Steve"—"U" Club 3, 4; Football 1, 2, 3; Basketball 1; Track 1, 2, 3, 4; Wrestling 4; Cross-Country 3, 4; Band 1, 2; Sagamore.



**William Lee Ingwersen**

*willing-lenient-inquisitive*  
"Bill"—Latin Club 2, 3; Science Fiction 4; Orchestra Prop. Manager 1, 2, 3, Vice Pres. 4; Ens. 3, 4.

**Bruce Connor Johnson**

*bright-casual-journeys*  
*Echo* 4; Quill and Scroll 4; Library Club 1; Track 2; Swimming 3; Cross-Country 2, 3, 4; Sagamore.

**Edna May Jenkins**

*energetic-mature-judicious*  
Psi 3; Spanish Club 3, 4; FHA 3, Hist. 4; SK 1, 2, 3, 4; Pep Club 2; Sagamore.

**Linda Joyce Johnson**

*highness-jem-jubilant*  
Student Council 1, 2, 3, 4; SK 1, 2, 3, 4; GAA 1, 2, 3, 4; Pep Club 2, 3; Girl's Chorus 1, 2; Choral Ens. 2; Reserve Cheerleading 1, 2; Office Help 4; Sagamore.

**James Wesley Johnson**

*just-witty-james*  
"Jim"—*Rosemary* Sports Ed. 4; Alpha Pres. 1; Lambda 2; Psi Pres. 3; Quill and Scroll 4; Student Council 1, 4; "U" Club 4; French Club 1; Basketball 1, 2, 3, 4; Class Vice President 2; Band 1, 2, 3; Vice-Pres. 4; Band Soloist 1, 2, 3, 4; Band Ens. 1, 2, 3, 4; Band Council 2, 3, 4; Quartermaster 2; Head Prop. Master 3; Sagamore; Alpha Psi Omega.



**Sally Ann Johnson**

*sassy-sudacity-joker*  
Student Council 1; Delta Sigma 3; Spanish Club 1, 2, 4; FTA 1, 2, 4; FHA 1; SK 1, 2, 3, 4; GAA 1; Pep Club 2; "Unto Thy Doors"; A Cappella 4; Mixed Chorus 3; Choral Ens. 4; Reserve Cheerleading 1; Tigerettes 4; Talent Show 2, 3.



**Benjamin Kay**

*businessman-persuasive-hiding*  
"Ben"—Transfer from Danville High School; Latin Club 2, 3; Tennis 4.

**Camille Kearns**

*clothes-maidenly-kindhearted*  
"Cammie"—*Echo* 3; Student Council 4; Terrapin 1, 2, Treas. 3, Pres. 4; French Club 1, 2; SK 1, 2, 3, 4; GAA 1, 2, 3, 4; Pep Club 2; Girls' Chorus 1, 2, 3; Choral Ens. 2, 3; *Rosemary* Queen Attd. 4; Valentine Court 1; Tri-Hi Stunt Show 1; Stage Show 1, 4; PTA Talent Show 2, 4; Tigerettes 3, 4; Sagamore.

**Rosemary Jean Kitzmiller**

*rosy-faunty-kindly*  
"Rosie"—Transfer Rantoul High School; Latin Club 1; GAA 1, 2; Art Club 4.

**Lynn O. Kesler**

*likeable-observant-nightly*  
"U" Club 2, 3, 4; Science Club 1, 2; Wrestling 1, 2; Band 1, 2, 3, 4.

**Wilbur J. Klein**

*willing-fester-keen*  
Wrestling 3.

**Mary Jackson**

*modern-laughing-jolly*  
"Jackson"—*Echo* 1, 4; *Rosemary* 3, 4; Student Council 2, 3; Delta Sigma 1, 2, 3, 4; French Club 1, 2, 3, 4; SK 1, 2, 3, 4; GAA 1, 2; Pep Club 2; "Incident at Carson Corners"; A Cappella 3, 4; Other Chorus 1, 2; Choral Ens. 2, 3, 4; Sagamore.

**George Allen James**

*genial-assured-jocular*

**Marjorie Suzanne Jarrett**

*matchless-sweet-focuse*  
"Margie"—SK 1, 2, 3, 4; Pep Club 2; Reserve Cheerleading 2; Office Help 2, 4.

**Johnny Wayne Jarvis**

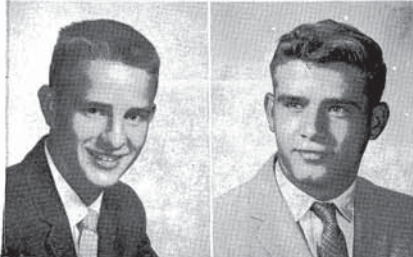
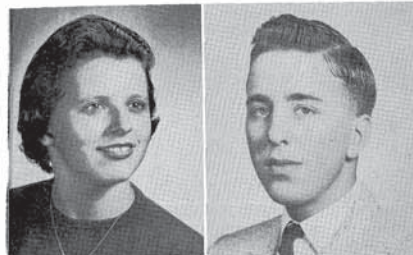
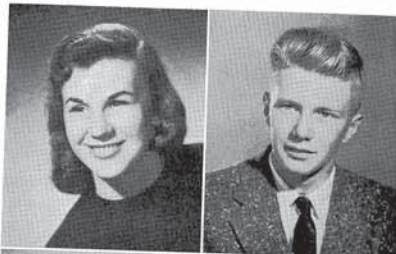
*just-well-liked-jocund*  
"John"—"U" Club 3, 4; DO 4; Library Club 3, 4; Football 1, 2, 3, 4; Basketball 1, 2; Track 1, 2, 3; Wrestling 3; Sagamore; Omega.

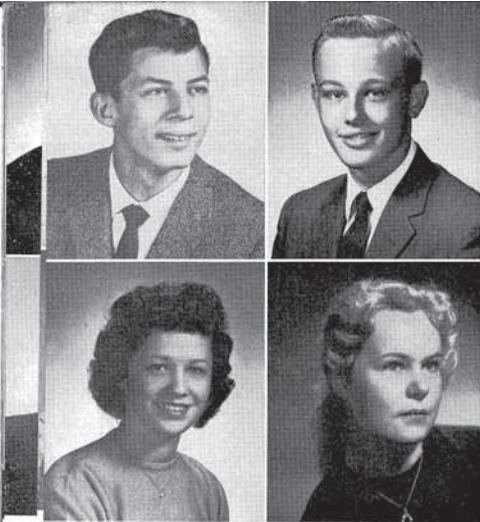
**Ruth Ellen Jones**

*records-effervescent-jocund*  
"Ruthie"—French Club 1, 2, 3, 4; FTA 2, 3; Lib. 4; SK 1, 2, 4; Girls' Chorus 1, 2, 3; Sagamore.

**James Hemphill, Jr.**

*jester-healthy*  
"Bo"—"U" Club 2, 3, 4; Spanish Club 2, 3; Football 1, 2, 3, 4; Basketball 1, 2, 3, 4; Track 1, 2, 3, 4.





**Keith A. Kuchl**

*knowing—admirable—brightly*  
 "Dcke"—Transfer from Champaign Senior High School.

**Alfred Clarence Krober**

*attentive—conscientious—kind*  
 Mixed Chorus 1, 2; A Cappella 3, 4; Alpha; Lambda; Psi; Alpha Psi Omega, Vice-President; Co-Valedictorian.

**Janice Lee Ann LaBoube**

*joking—lucky—right-hearted*  
 "Jan"—Transfer from St. Theresa High School; Dramatics 1; Chorus 1; GAA 1, 2; Pep Club 1, 2.

**Marianne Lagerblad**

*most beautiful lady*  
 "Nenne"—Foreign Exchange Student from Helsinki, Finland; Will receive her diploma from Tolo Svenska Samskola in two years; Student Council 4; SK 4; Class Vice President 4; Concert Choir Sec. 4.

**Charles Gilbert Long**

*cheerful—genial—liveliness*  
 "Gib"—Library Club 4; Wrestling 1, 2.

**George Edward Lincoln**

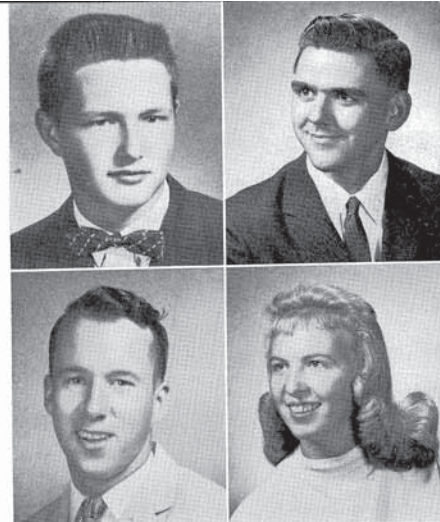
*gallant—expositor—length*  
 "Eddie"—Band 1, 2, 3, 4; Band Ens. 4.

**James Long**

*jokes—hardiness—loyal*  
 "Jim"—"U" Club 3, 4; Football 1, 2, 3, 4; Basketball 1, 2; Wrestling 3, 4; Band 1, 2, 3.

**Joann Longest**

*jubilant—appreciable—lightness*  
 SK 1, 2, 3; GAA 1, 2, 3, 4; Office Help 4; PTA Talent Show 2, 3.



**Bruce Taylor Larson**

*bold—talented—right-hearted*  
 "Jumbo"—Student Council 3, 4; Latin Club 1, 2; Swimming 1, 2.

**William Edward Langhoff**

*bracing—energetic—lean*  
 "Bill"—"U" Club 3, 4; Football 1; Basketball 1, 2, 3, 4; Track 3; Cross-Country 4; Sagamore.

**Lyman Bernt Larson**

*long—basketball—lively*  
 "Fats"—Psi 3; Student Council 1, 2; "U" Club 1, 2, 3, 4; Thespians 2, 3, 4; French Club 1, 2; Football 1, 2, 3, 4; Basketball 1, 2, 3, Capt. 4; Track 1, 2, 3, 4; "Our Hearts Were Young and Gay"; Band 1, 2, 3, 4; Dance Band 2, 3, 4; Band Ens. 3, 4; Tigers Den Council 1, 2, 3, 4; Valentine Court 4; Boys State 3; Stage Show 2, 3, 4; Outstanding Junior Athlete; Sagamore.

**Carol Rae Leming**

*charm—rarity—laudable*  
 Alpha 1; Psi 3; French Club 1, 2; FTA 4; SK 2, 3, 4; Pep Club 2; Girls' Chorus 1, 2; PTA Talent Show 2; Tri-High Talent Show 2.

**Phillip Alvin Lovett**

*pal—audacious—lively*  
 "Phil"

**Betty Jean Lewis**

*bright—joyful—likeable*  
 "Bet"—SK 4; GAA 4; Girls' Chorus; Tri-High Talent Show 1.



**Janice Leach**

*alert—jewel—laughter*  
 "Jan"—Latin Club 1; SK 1, 2, 3, 4; GAA 1, 2, 3, Pt. Chm. 4; Pep Club 2; Orchestra Lib. 1, 2, 3.

**Joyce Ann Mackey**

*joking—assured—merry*  
 SK 1, 2, 3; GAA 1, 2, 3; Band 1, 2, 3; Cadet Band Pres. 4.

**Geraldine Ann Marriott**

*giggles—admirable—merry*  
 "Gerry Ann"—Rosemary typist 4; Spanish Club 3, Sec. 4; FTA 2, 3, 4; SK 1, 2, 3, 4; GAA 1, 2; Pep Club 2; Girls' Chorus 1, 2; Choral Ens. 2; Office Help 3; Sagamore.

**Janet Arline Mattox**

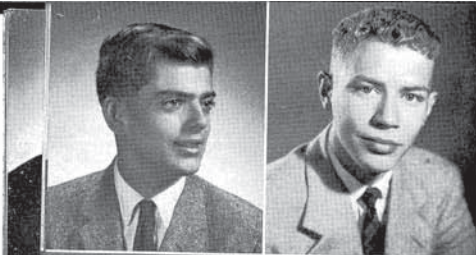
*jolly—agreeable—mischievous*  
 "Jan"—Transfer from Champaign Junior High School; Pep Club 1; Other Chorus 1; Lost & Found Club 1; Tips for Teens Pres. 1; Office Help 2.

**Charles A. McCartney**

*cute—adventurous—mighty*  
 "Chuck"—"U" Club 3, 4; Football 1, 2, 3; Track 3; Wrestling 1, 3, 4.

**Robert Ruben McIntyre, Jr.**

*ready—rewarding—modest*  
 "Darby"



**Millard Sayre McVay, Jr.**  
*mechanical—serious—mild*  
"Mick"—A Cappella 4; Boys' Chorus 3, 4; Mixed Chorus 3; Choral Ens. 3, 4.



**Dary John Mizelle**  
*Disciplined—jazzy—musical*  
"Johnny Mi"—Transfer from South Bend Central High, South Bend, Ind. Student Council 1, 2; Swimming 2; Booster Club 1, 2; Band 3, 4; Dance Band 3, 4; Band Ens. 3, 4.

**James Lee Moore**  
*joking—likeable—major*  
"Jim"—Rosemary Music Ed. 4; Alpha 1; Lambda 2; Psi 3; Quill and Scroll 4; Track 2, 3; Cross-Country 2, 3; Band 1, 2, 3, 4; Band Ens. 1, 2, 3, 4; Drum Major 4; Orchestra 2, 3, 4; Sagamore; Alpha Psi Omega.

**Virgil Moreland**  
*fortunate—valiant—mellow*  
Track 1, 2, 3, 4.

**Rita-Marie Nordheden**  
*refined—modest—pleasant nature*  
"Eric"—GAA 1, 2; SK 1, 2, 3, 4; FTA 2; Latin Club 1, 2, 3.

**Linda Marion Nolen**  
*liveliness—maidenly—notable*  
Echo 3; Alpha 1; Psi 3; Student Council 4; French Club 1, 2, 3, Treas. 4; Delta Sigma 1; FTA 1, 2, 3, Hist. 4; SK 1, 2, 3, 4; GAA 1, 2; Pep Club 2; Girls Chorus 1, 2; Tigarettes 4; Tri-Hi Stunt Show 1; Sagamore; Alpha Psi Omega.

**Laren Potts**  
*laughing—ready—potential*  
DO 4.

**Joan Phillips**  
*jolly—radiant—personality*  
Transfer from Pocatello High School, Pocatello, Idaho; Rosemary 3, Bus Mgr. 4; Spanish Club 1, 2, 3, 4; FTA 3, Parl. 4; FHA 1; SK 2, 3, 4; F.N.A. 1; Footlights 1; Girls Council 1; Pep Club 2; Office Help 2, 3, 4; Sagamore.



**Kathryn Phillips Mowrer**  
*bravado—popular—magnificent*  
"Katie"—Echo Copy Editor 1, 2; Feature Editor 3; Co-Editor 4; Alpha 1; Lambda 2; Psi 3; Quill and Scroll 3, 4; Student Council 2, Del. State Con. 3, Vice-President, Sec. of Cham Dist. Assn., Discuss Leader at Nat. Con. 4; Orchest. 2, Treas. 3; French Club 1, 2, 3; FTA 2, 3; SK 1, 2, 3, 4; GAA 1, 2, 3; Pep Club 2; Class Treasurer 1; Class Publicity Chairman 4; Girls' Chorus 1, 2; Tri-High Queen 4; Attendant Valentine Court; Tigarettes 3, 4; FTA Talent Show 3; Tri-High Stunt Show 1; Tri-High Council 3, 4; Sagamore; Alpha Psi Omega.

**Judy Diane Murray**  
*jaunty—dresses—modest*  
Transfer from Garden Grove Union High School, Garden Grove, Calif.; Spanish Club 3; Art Club 2; Band 1, 2, 3, 4.

**David Eugene Myers**  
*drawer—engaging—mirth*  
"U" Club 4; Football 2; Cross-Country 4; Band 1, 2, 3.

**Frank Mynard**  
*fun—handsome—musician*  
"Bud"—Echo 4; "U" Club 2; Cross-Country Mgr. 1, 2; Wrestling Mgr. 1, 2; Track Mgr. 1, 2; Band 1, 2, Quartermaster 3, Prop. Master 4; Band Council 3, 4; Band Ens. 3, 4; Sagamore.

**Charlotte Louise Nesmith**  
*cheerful—lovable—neat*  
Rosemary 1, Class Ed. 4; Quill and Scroll 4; Student Council 1, 4; Delta Sigma 4; French Club 1; FTA 1, Libr. 2, Sec. 3, Pres. 4; Art Club 3, 4; SK 1, 3, 4; Pep Club 2; Class Treas. 3; Girls' Chorus 1, 2; Concert Choir 3; Speech Contest 4; Talent Show 1, 2, 3; Tri-Hi 2, 3; Stage Show 3; Sagamore.

**Karolee Neupert**  
*kiddy—nice*  
Alpha 1; Lambda 2; Spanish Club 1, 2, Treas. 3, Vice Pres. 4; SK 1, 2, 3, 4; GAA 1, 2; Pep Club 2; PTA Talent Show 1, 2; Sagamore; Alpha Psi Omega.



**Larry Dean Petty**  
*laudable—depth—persuasive*  
Alpha 1; Lambda 2; Psi 3; Student Council 1, 2, 4; "U" Club 3, 4; Thespians 3, 4; Delta Sigma 3, 4; Football 1, 2, 3, 4; Basketball 1, 2, 3; Track 1, 2, 3; "Years Ago," "Angel Street," "Christmas Play," 3, 4; "Unto Thy Doors," "Song of Glory"; A Cappella 1, 2, 3, 4; Boy's Chorus 3, 4; Choral Ens. 1, 2, 3, 4; Speech Contest 3, 4; Sagamore.

**Glenna Idelle Powers**  
*grand—intelligent—precise*  
"Cookie"—Art Club 2; Library Club 1; Office Help 4.

**John Charles Putebaugh**  
*jocond—competent—precise*  
Alpha 1; Lambda 2; Psi 3; Band 1, 2, 3, 4; Hand Ens. 2, 3, 4; Orchestra 3, 4; Alpha Psi Omega.

**Mary Hewitt Price**  
*merit—happy—priceless*  
"Porky"—Alpha 1; Psi 3; Stud. Council 1, 2, 3; Terrapin 4; French Club 1, 2, 4; FTA 2, 3, Treas. 4; SK 1, 2, 3, 4; GAA 1, 2; Pep Club 2; A Cappella 4; Other Chorus 1, 2, 3; Choral Ens. 4; Sagamore.

**Phyllis Ruth Regnier**  
*proficient—realistic—recreation*  
Lambda 2; Spanish Club 2, 3; FHA 1, Public Rel. Chm. 2; SK 1, 2, 3, 4; GAA 1, 2, 3, 4; Pep Club 2; A Cappella 4; Other Chorus 1, 2, 3; Choral Ens. 2, 3, 4.

**Cecil Eugene Reynolds, Jr.**  
*chisnury—earnest—readiness*  
DO 3, 4; Football 1, 2; Swimming 1; Golf 1, 2; Band 1, 2.



**Margaret Roberts**

*music—reading—refined*  
"Maggie"—Alpha 1; Lambda 2; Psi 3; Latin Club 1, 2; Art Club 2, 4; SK 1, 2, 4; Band Asst. Lib. 1, 2; Head Lib. 3, Band Ens. 2, 3, 4; Sagamore; Alpha Psi Omega, Sec.; Co-Salutatorian.

**Carolyn Joyce Rice**

*clarity—jolly—royal*  
Latin Club 1, 2; FHA 1; SK 1, 2, 3, 4; GAA 1, 2, 3, 4; Pep Club 2; Girl's Chorus 1, 2; Office Help 2, 4.

**Kenneth Ray Richardson**

*kind—romantic—reliable*  
"Ken"—DO 4.

**Ronald Dean Reynolds**

*rare—daring—aces*  
"Ron"—DO 4; Football 1; Wrestling 1.

**Mack Allen Self**

*manly—amicable—zenible*  
Transfer from Mansfield High School; Band 1, 2.

**Judith D. Seth**

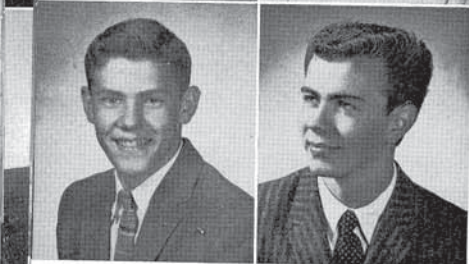
*jollity—daydreams—seamstress*  
FHA 1, 2, 3, Sec. 4; GAA 4; Library Club 1.

**Beverly Seward**

*bashful—alert—sweet*  
"Bev"—French Club 3, 4; SK 1, 2, 3, 4.

**Charles Shadoan**

*cheerful—lean—silent*  
"Chuck"—Basketball 1, 2; Track 1, 2, 3, 4; Cross-Country 1, 2, 3, 4.



**Carrol Brent Roberson**

*champion—bold—reliant*  
"Roby"—Student Council 1; "U" Club 2, 3, 4; Spanish Club 1; Football 1, 2, 3; Track 1, 2, 3; Basketball 1, 2, 3, 4; Cross-Country 4; Band 1, 2, 3, 4; Band Ens. 1, 2, 3, 4; Dance Band 2, 3, 4; Tiger's Den Council 2, 3, 4; Sagamore.

**Lonnie Rucks**

*lanky—research*  
"U" Club 4; Track 2, 3, 4; Cross-Country 4.

**Robert William Roney**

*realistic—worthy—respectful*  
"Bob"—Library Club 1, 2, 3; Cafeteria Help 3.

**Carolyn Sands**

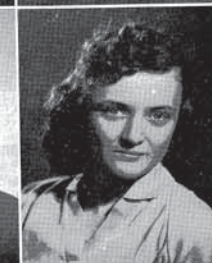
*clever—mannerly—sincere*  
"Cleo"—Echo 1, 2; Rosemary 4; Lambda 2; Psi 3; Spanish Club 1, 2, 3, 4; Art Club 2, 3, Treas. 4; Science Fiction 2, 3, Treas. 4; SK 1, 2, 3, Vice Pres. 4; Band 1, 2, 3; Band Ens. 2, 3; Sagamore; Alpha Psi Omega.

**Jerry Lee Seiler**

*just—loyal—shy*  
Alpha 1; Lambda 2; Psi 3; "U" Club 4; Basketball 1, 2, 3, 4; Track 1, 2, 3, 4; Cross-Country 2, 3, 4; Band 1, 2, 3, 4; Dance Band 2, 3, 4; Band Ens. 1, 2, 3, 4; Sagamore; Alpha Psi Omega; Co-Salutatorian.

**Anita Ann Scott**

*athletic—alluring—slender*  
SK 3, 4; Office Help 2.



**Peggy Ann Shaffer**

*peppy—arty—sincere*  
FHA 1, 2; SK 1; Library Club 1.

**David R. Short**

*devoted—remarkable—slang*  
Wrestling 1; Chorus 1, 2.

**Robert Eugene Smith**

*ready—entertaining—short*  
"Bob"—Transfer from University High School; Manager 1, 2; Chorus 1, 2; Choral Ens. 1, 2.

**Terry Anne Shull**

*torchy—adapt—snave*  
"Torchy, Teanne"—Echo 1, 2, 3, 4; Alpha 1; Lambda 2; Psi 3; Quill and Scroll 4; Student Council 1, 2, 3, Treasurer 4; Terrapin 1, 2, 3, Vice-President 4; Delta Sigma 1, 2, 3, 4; French Club 1, 2; SK 1, 2, 3, 4; GAA 1, 2, 3, 4; Pep Club 2; Class Vice-President 3; A Cappella 3, 4; Girls' Chorus 1, 2; Madrigals 3, 4; Girls' Ens. 1, 2; Quin-Tones 4; Choral Soloist 1, 2, 3, 4; Court of Honor 2; Tiger's Den Council 1, 2; Girls' State Alternate 3; Echoes of Urbana High 4; P.T.A. Talent Show 2, 3, 4; Tri-H Talent Show 1, 3; Stage Show 1, 3, 4; Sagamore; Alpha Psi Omega.

**Leonard S. Spencer**

*liberal—speedy—strong*  
"Spence"—Transfer from Atwood; Football 1; Basketball 1, 2; Wrestling 3.

**Patricia Lee Sindle**

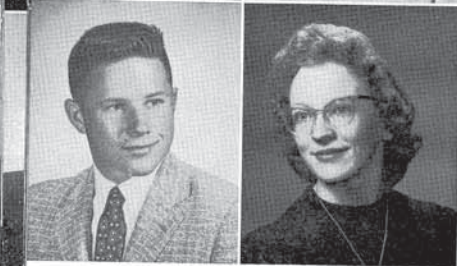
*petite—light—sweet*  
"Patsy"—Transfer from Andrew Jackson High School, New York; Chorus 2, 4; Choral Ens. 4.





**Judith Fay Steenbergen**  
*joyful—feminine—sweet*  
Student Council 1; Art Club 2, 3; SK 1, 2, 3, 4; Pep Club 2; Office Help 1, 2, 3, 4.

**Bernice Kay Skinner**  
*beauty—kind—southern*  
SK 4; Office Help 4.



**Michael F. Stevens**  
*mischievous—friendly—southpaw*  
"Mike"—Alpha 1; Psi 3; French Club 3, 4; Football 1, 2, 3, 4; Alpha Psi Omega.

**Barbara Jean Soloman**  
*jokes—bride—simplicity*  
Spanish Club 1; SK 1, 2, 3, 4; GAA 1, 4.

**Raymond Everett Stipes**  
*rowdy—energetic—sincere*  
"Ray"—Track 1, 2, 3; Swimming 1; Wrestling 2.

**Judith Carolyn Stout**  
*jolly—carefree—swell*  
"Judy"—Transfer from University High; GAA 1, 2; French Club 1; SK 3, 4.

**Carolyn Sue Tiffin**  
*cute—sweet smile—trustworthy*  
SK 2, 3, 4; GAA 3, 4; Office Help 1, 2, 3; PTA Talent Show 2; Other Talent Shows 2.

**Nancy Jean Swofford**  
*neat—jaunty—studious*  
Delta Sigma 1; Spanish Club 1, 2, 4; Camera Club 4; SK 1, 2, 3, 4; GAA 1, 2, 3, 4; Pep Club 2, 3; Band Concert 1, 2, 3, 4; Band Ens. 4.

**Stanley Tharp**  
*smart—refined—tops*  
"Stan"—Transfer from Mahomet High School; F.F.A.; Freshman Honor Roll.

**Michael Tepper**  
*money—tycoon*  
"Mike"—Echo 4; Alpha 1; Lambda 2; Psi 3; Latin Club 1, 2, 3, 4; Science Fiction 3, Pres. 4; Orchestra 1, 2, 4; Orchestra Ens. 4; Sagamore; Alpha Psi Omega.



**Marsha De Ann Thrasher**  
*merry—dancer—thoughtful*  
Student Council 1, 2, 3, 4; SK 3, 4; GAA 1, 2; Pep Club 2, 3, 4; A Cappella 2, 3, 4; Other Chorus 1; Choral Ens. 2, 3, 4; Reserve Cheerleading 1, 2; Homecoming Queen Attendant 2; P.T.A. Talent Show 1, 2; Tigerettes 4.

**Nancy Ann Tiffin**  
*nice—auto—tomboy*  
Band 1, 2; Office Help 4.

**Judith Tracy**  
*joyful—active—talented*  
"Willie"—Echo 2, Asst. feat. ed. 3, Feat. ed. 4; Alpha Vice Pres. 1; Lambda 2; Psi 3; Quill and Scroll 4; Student Council 1, 2; Orchestras 3; French Club 1, 2, Treas. 3, President 4; SK 1, 2, 3, 4; GAA 1; Class Secretary 2; Band 1, 2, 3, Sec. 4; Band Soloist 2, 3, 4; Band Ens. 1, 2, 3, 4; Tigerettes 4; Tri-Hi Student Show 1, 3; Stage Show 3; PTA Talent Show 3, 4; Sagamore; Alpha Psi Omega, Pres. 4; Co-Salutatorian.

**Patty Jo Tinberg**  
*petite—joyous—teasing*  
FHA 1, 2, 3, 4; SK 1, 2, 3, 4.



**Arlaine Ruth Teigler**  
*athletic—rhythm—true*  
GAA 1, 2; Band 1, 2, 3, 4; Band Soloist 4; Band Ens. 2, 3, 4; Orchestra 3, 4.

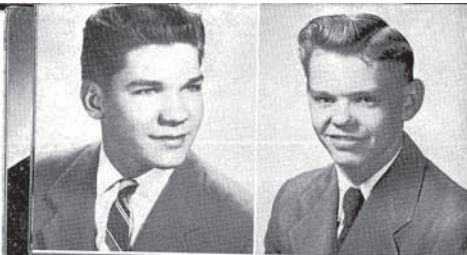
**James Warren Townsend**  
*jimdandy—willing—thinker*  
Alpha 1; Lambda 2; Psi 3; Spanish Club 2, 3; Science Fiction 2, 3, Vice Pres. 4; Science Club 1, 2; Band 1, 2, 3, 4; Band Soloist 2, 3; Band Ens. 2, 4; Alpha Psi Omega.

**Bonita Kay Waechter**  
*beautiful—kind—winsome*  
"Bonnie"—Thespians 3, 4; Delta Sigma 1, 2, 3, 4; Latin Club 1; Spanish 3, 4; FHA 2, Vice Pres. 3; Pres. of Sec. 16 3, Pres. 4, Pres. of Sec. 16 4; Art Club Vice Pres. 2, Treas. 3; SK 2; GAA 1, 2; Pep Club 2; "Seven Sisters" 1; "Our Hearts Were Young and Gay" 2; Christmas Assembly 3; Orch. 1, 1, Pres. 3, Pres. 4; Orch. Ens. 2, 4; Sagamore.

**Richard Van Deventer**  
*respected—likeable—vital*  
"Dick"—Library Club 1, 2, 3.

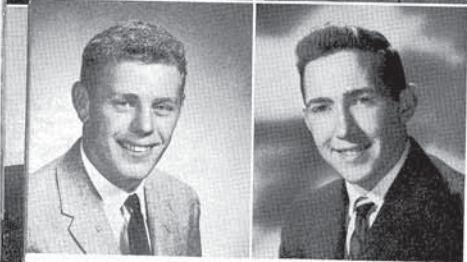
**Edmond D. Wade**  
*echos—diver—winner*  
"Eddie"—Student Council 1, 2, 3, 4; "U" Club 2, 3, 4; Latin Club 1; Swimming 1, 2, 3, 4; Golf 1, 2, 3, 4; A Cappella 1, 2, Treas. 3; Vice Pres. 4; Madrigals 1, 2, 3, 4; Choral Ens. 2, 3, 4; Choral Soloist 4; Boys State 3; Echoes of Urbana High 4; Stage Show 2, 3, 4; Tri-Hi Council 4; Sagamore; Omega.

**Janon Tucker**  
*jewel—bubbly—tiger*  
"Jan"—Transfer from Champaign; Retro Business Mgr. 1; Highlights 1; Proms Co-Chairman 1; Student Council 1; Alpha 1; Lambda 2; Psi Sec. 3; Latin Club Vice Pres. 2, Ex-Council 3; FFA 2, 3; SK 2, 3, Sec. 4; Pep Club 2; Soph. Chorus; Valentine Queen Attendant 4; Tigerettes 4; Talent Show 2, 3; Sagamore; Alpha Psi Omega.



**Joseph Larry Wagoner**  
*laboratory—worthy—wonder*  
DO Treas. 4.

**William G. Walker**  
*willing—genial—worker*  
"Bill"—Latin Club 1, 2; Football 1, 2.



**Richard Eugene Warren**  
*Rauschenberger—earnest—wrestler*  
"U" Club 3, Pres. 4; Library Club 1; Football 2, 3, 4;  
Track 1, 2, 3; Wrestling 1, 2, 3, Capt. 4.

**Jeffrey A. Wandell**  
*jobster—artist—waterguns*  
"U" Club 3, 4; Spanish Club 3, 4; Football 3, 4;  
Track 2, 3; Swimming 1, 2, 3, 4; A Cappella 1, 2, 3,  
4; Choral Ens. 1, 2, 3, 4.

**Larry Ralph Wantland**  
*likeable—rare—well-read*  
Alpha 1; Psi 3; Spanish Club 1; Cross-Country 4;  
Boys' State 3; Alpha Psi Omega.

**James Walsh**  
*jaunty warrior—wordy*  
Football 1; Basketball 1.

**John David Weeks**  
*jollity—dancer—wedding*  
"Johnny"—Golf 1; Cross-Country 1; Band 1, 2, 3, 4.

**James Lee Whitt**  
*juvenile—lively—the wit*  
"Jim"—"U" Club 3, 4; Football 3; Track 1, 2;  
Swimming 1, 2, 3, 4; Class Pres. 4; Band 1, 2, 3, 4.

**Robert F. Wiley**  
*rugged—friendly—wisdom*  
Lambda 2; Football 1, 2; Swimming 2; Track 1, 2;  
"Our Hearts Were Young and Gay"; Omega.

**Ellen Gaynell Widdows**  
*energetic—gay—well-liked*  
"Gay"—Echo 1, 2; Alpha Sec. 1; Lambda Sec. 2; Psi  
3; Student Council 1, 2, 3, President 4; Delta Sigma  
1, 2, 3; French Club 1, 2, 3; FTA 2, 3, 4; SK 1, 2,  
3, 4; Pep Club 2; Class Sec. 1; "Seven Sisters";  
A Cappella 4; Other Choruses 1, 2, 3; Choral Ens. 4;  
Court of Honor 1, 3; Rosemary Queen 4; Valentine  
Court 4; Tigers Den Council 1, 2, 3, 4; DAR 4;  
Tigerettes 3; Chr. Foreign Exchange 3; Sagamore;  
Alpha Psi Omega.



**Ronald Lee Wilson**  
*redhead—laughing—well-groomed*  
"Ron"—Student Council 3; "U" Club 2, 3, 4; Latin  
Club 2; Swimming 1, 2, 3, Capt. 4; Band 1, 2, 3, 4;  
Band Ens. 3, 4.

**Earl Kenneth Wilson, Jr.**  
*easy going—bidding—well-liked*  
"Ken"—DO 4; Football 1, 2; Swimming 1, 2, 3, 4;  
Band 1, 2, 3, 4; Band Soloist 3.

**Lizzie Jo Winfrey**  
*biting—jocose—whimsical*  
"Lit"—FHA 4; SK 4; GAA 3, 4; Library Club 1;  
Pep Club 1, 2; Girls Choir 1.

**Russell Withrow**  
*worker—rodz—well-well*  
"With"—"U" Club 3, 4; Football 1, 2, 3, 4; Track  
1, 2.

**Seniors Not Pictured**

- |                |                    |
|----------------|--------------------|
| Hubert Collins | Kenneth McCall     |
| Shirley Gamble | Melvin Nogle       |
| Steven Gray    | Milton Orcutt, Jr. |
| James Maret    | Charles Underwood  |
- James Treat

**George Edward Wilkins**  
*gentleman—elite—well-meaning*  
Swimming 2; Band 1, 2, 3, 4; Band Ens. 3, 4.

**John M. Williams**  
*joshing—masterful—well-mannered*  
"Jack"—Alpha 1; Lambda 2; Psi 3; "U" Club 3, 4;  
Football 1; Basketball 1, 2, 3, 4; Track 1, 2, 3, 4;  
Cross-Country 3; Boys' State 3; Sagamore.

**Ronald Glenn Willard**  
*ready—gay—willing*  
"Ron"—"U" Club 2, 3; Latin Club 1; Library Club  
3; Wrestling 1, 2, 3; Cross-Country 1; Football Man-  
ager 2.

**Martha Gay Willman**  
*music—gregarious—western-fan*  
"Gay"—Psi 3; Delta Sigma 4; French Club 3, 4; Art  
Club 4; Camera Club 3, Sec. 4; SK 1, 2, 3, 4; "The  
Remarkable Incident at Carson Corners"; Band 1, 2,  
3, 4; Band Soloist 1, 3, 4; Band Ens. 1, 2, 4; PTA  
Talent Show 4; Sagamore; Alpha Psi Omega.



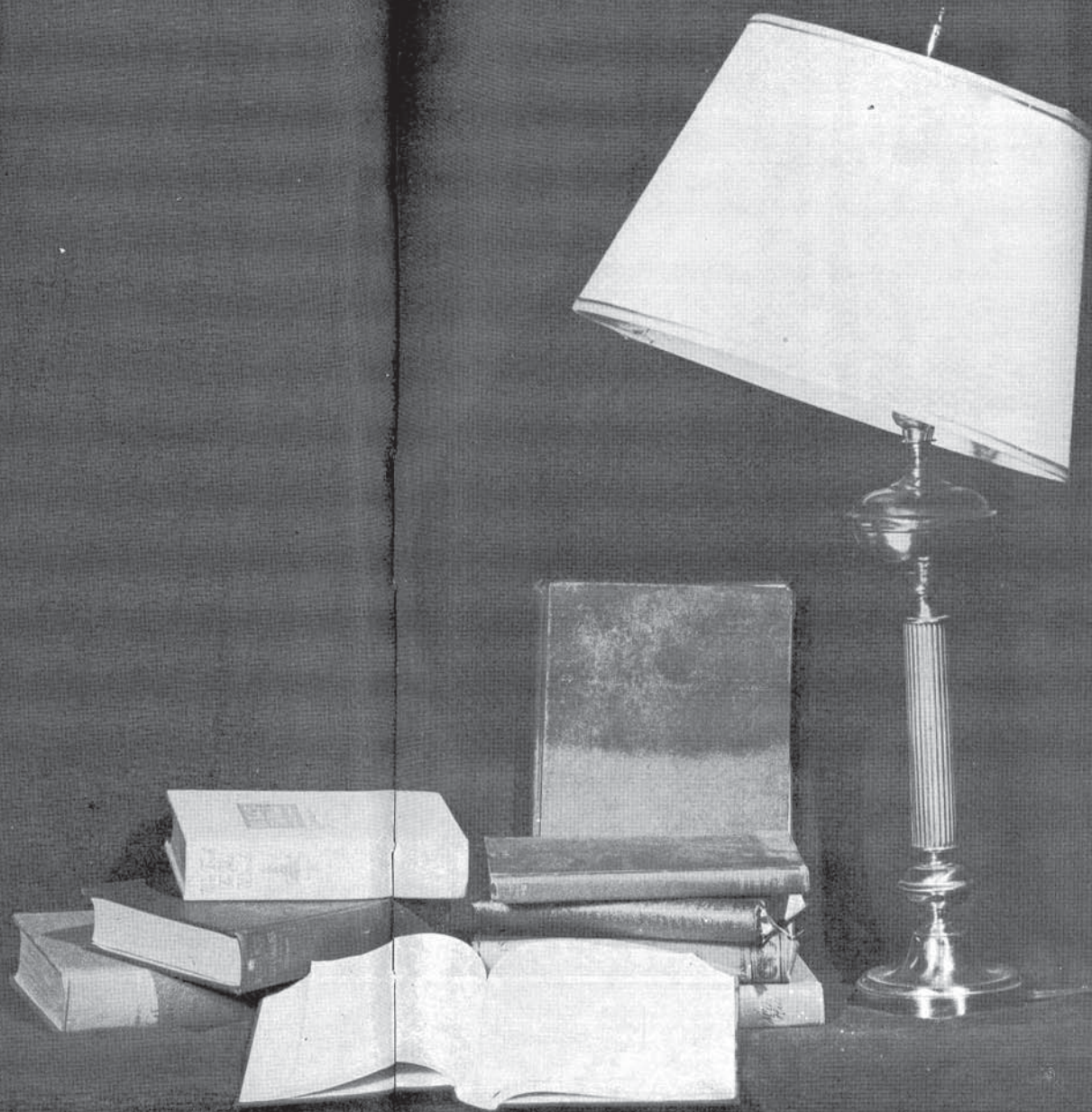


*Work, Achievement, and Fun*



*Our Performances*

Underclassmen



### MISS LAWSON'S HOMEROOM

Row 1: J. Basinger; S. Anderson; R. Bilbrey; J. Brash; V. Barth; S. Wilson; M. Graskewicz; S. Borleff; G. Barnett; Miss Lawson. Row 2: L. Bebout; C. Brockett; H. Bennett; C. Armstrong; P. Frazier; C. Dreyer; J. Charity; J. Born. Row 3: S. Bender; E. Bourgois; C. Harnsberger; W. Burnett; P. Burns; L. McGehe; P. Conery. Row 4: E. Matson; A. Beasley; J. Benner; L. Armstrong. Absent: J. Judy.



### MRS. DOBYNS' HOMEROOM

Row 1: M. Huffer; M. Lane; N. Lancaster; V. Legue; L. Hutts; S. Jenkins; J. Hudson; J. Knott. Row 2: Mrs. Dobyns; J. Gough; P. Hubert; J. Irie; S. Hopson; C. Krueger; K. Langhaar; S. K. Jenkins; C. Hoskins. Row 3: T. Hough; P. Ingle; J. Keller; J. King; W. Lavenhagen; C. Keller; C. Hovde; D. James; J. Iles.

### MRS. UNRUH'S HOMEROOM

Row 1: C. Williams; S. Boyer; J. Wheeler; A. Elam; D. Welch; L. Tooley; S. Whiteside. Row 2: Mrs. Unruh; H. Williams; B. Venable; J. Rasmussen; S. Vliet; L. Edwards; C. Wingle; G. Wedding; C. Zimmer. Row 3: K. Underwood; J. Weeks; K. Watson; J. Walker; J. Vitton; D. Thompson; A. Wood; V. Willman. Absent: B. Venable; R. Williams.



### MR. SMITH'S HOMEROOM

Row 1: J. Hacker; R. Heintz; V. Hays; D. Henry; S. Gilbert; M. Franklin; A. Head; J. Hammock; Mr. Smith. Row 2: N. Darling; D. Gifford; D. Gillis; E. Hoff; C. Ginzer; L. Forsythe; E. Hart; B. Frey; K. Hale. Row 3: J. Garland; D. Hettinger; J. Hageman; B. Hatch; C. Higgins; J. Gronland; M. Gianturco; C. Hastings; E. Gillespie; R. Hays.

### MRS. THELANDER'S HOMEROOM

Row 1: C. Pomernacki; T. Roberts; L. Rider; L. Reynolds; F. Thompson; J. Powell; J. Rasmussen; J. Richards; L. Boucher. Row 2: L. Rowls; L. Plankenhorn; B. Roberts; A. Pryor; E. Thompson; J. Sanders; S. Sarginson; D. Rear; J. Rice; Mrs. Thelander. Row 3: R. Santrock; R. Roderick; T. Roughton; J. Reinhart; G. Reiss; M. Russell; J. Sanderson; J. Rodgers; D. Parker; R. Reinhart.



### MRS. CONRAD'S HOMEROOM

Row 1: D. Teel; P. Tenbrook; J. St. Clair; M. Smith; J. Rose; E. Miller; P. Shotts; M. Mizelle; E. Ammons; Mrs. Conrad. Row 2: N. Smith; L. Smith; L. Scott; G. Ricketts; R. Sink; P. Shadoan; P. Scott; S. Shipley; J. Smith; C. Sirota; A. Tatman. Row 3: J. Johnson; K. Smith; C. Underwood; J. Stirewalt; A. Smith; K. Taylor; S. Shaw; W. Slover; J. Adams; J. Smith. Absent: S. Ferguson; J. Anderson.

### SOPHMORE CLASS

driver's training—research papers for world history—music contests—JULIUS CAESAR—winning homecoming float, "Have Ball, Will Travel"—Kuder Preference Tests—reporting for *Echo*—getting ads for Rosemary—reserve cheerleading.

#### OFFICERS

Tom Tinkham, Pres.; Doug Daniels, Pub. Ch.; John Smetana, Sec.; Sharon Schwab, V.P.; Dwight Powell, Treas.



### MRS. BURGETT'S HOMEROOM

Row 1: D. Barnett; Mrs. Burgett; M. Bates; B. Baker; L. Ashby; L. Brockcut; M. Born; R. Arata; V. Greene. Row 2: T. Anderson; S. Shoemaker; R. Bacht; R. Bell; J. Barrow; M. Bowman; B. Bennett; D. Boilet. Row 3: M. Altenbernd; G. Henderson; T. Bebout; C. Lorenz; S. Bright; D. Ammons; L. Baker; B. Bell. Absent: V. Bothfuhr; E. Archer.

**MISS MARANVILLE'S HOMEROOM**

Row 1: D. Hollingsworth; E. Johnson; C. Hutts; L. Kink; M. Kammon; D. Klein; V. Ing; T. Hurliman. Row 2: M. Kimpel; J. Judy; V. Hicks; S. Pearson; M. Sims; S. Hine; E. Jentschke; C. Holt; J. H.nkley. Row 3: T. Horkstrom; R. Hult; L. Johansen; J. Holycross; L. Hindman; M. Krober; J. Hopkins; R. Hubbard; C. Hunt; P. Johnson.

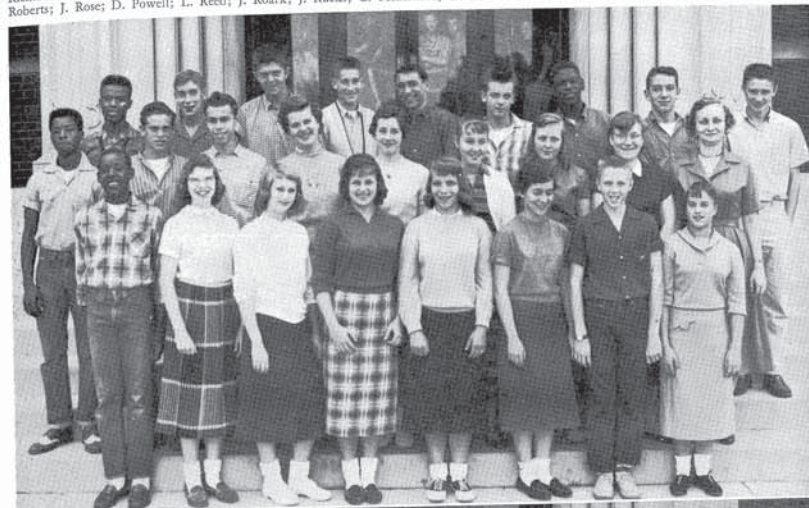


**MRS. OLSON'S HOMEROOM**

Row 1: F. Gerds; P. Herbert; J. French; L. Grein; D. Harmon; D. Henaler; R. Fryer; H. Head; J. Forbes. Row 2: S. Gibbs; M. Hahn; K. Hansen; J. Hays; L. Hart; P. Heldt; R. Gerhart; P. Good; G. Henson; K. Hang; R. Frampton; Mrs. Olson. Row 3: G. Goff; J. Tondini; F. Hatter; P. Hansen; B. Fondren; V. Green; G. Garman; J. Gregorson; D. Grindley; A. Hemphill. Absent: O. Hall; S. Hughes.

**MISS BRADFORD'S HOMEROOM**

Row 1: L. Ruckes; H. Rogers; E. Runyan; M. Rebnan; M. Regnier; K. Pryor; L. Radebaugh; S. Reynolds. Row 2: M. Rucks; R. W. Richardson; F. Richards; M. Frater; N. Russell; S. Rhodes; S. Saltgaver; P. Retzolk; Miss Bradford. Row 3: R. E. Richardson; S. Roberts; J. Rose; D. Powell; L. Reed; J. Roark; J. Rucks; C. Pridemore; D. Dial.



**MRS. KARSTETTER'S HOMEROOM**

Row 1: G. Smith; S. Smith; S. Shore; K. Sawyer; S. Slade; P. Scouffas; K. Shore; S. Shumaker. Row 2: D. Seeds; A. Seymour; J. Shaw; B. St. John; S. Schwab; G. Smith; L. Smith; R. Seaman; Mrs. Karstetter. Row 3: J. Smetana; M. Saposnik; A. Smith; M. Smith; W. Sarginson; B. Seaman; R. Seams; A. Solomon.

**MRS. GRIBANOSKY'S HOMEROOM**

Row 1: E. Coles; P. Clevenger; N. Clark; R. Covert; A. Brookens; L. Eades; L. Clark; E. Bruce. Row 2: D. Cook; E. Clancy; P. Cribbet; A. Creamer; E. Brown; A. Coria; Z. Christensen; K. Crist; G. Schrock; Mrs. Gribanovsky. Row 3: L. Boise; A. Clemens; A. Carter; J. Cross; L. Carter; B. Corray; L. Creighton; K. Busey; R. Cardiff; T. Carmen.



**MRS. LOWDER'S HOMEROOM**

Row 1: T. Tinkham; W. Thrasher; L. Walker; S. Stevens; M. Wachter; N. Venable; L. Stowe; J. Trinkle. Row 2: D. Thorne; P. Stillwell; J. Trueman; K. Swearingen; B. Taylor; S. Thompson; R. Trotter; S. Tegler; V. Steenbergen; S. Villanti; Mrs. Lowder. Row 3: P. Wallace; F. Thompson; R. Thornes; T. Walters; G. Storm; B. Vliet; M. Stoner; K. Walden; R. Stipes.

**MRS. MARTIN'S HOMEROOM**

Row 1: L. Lorenz; D. Lynans; J. Mattos; D. Lerch; D. Lerch; L. Long; G. McCartney. Row 2: P. Lang; J. Meyers; E. Lyman; L. Lyman; S. Martin; P. Love; M. McCloy; M. Lientz; Mrs. Martin. Row 3: R. Larson; J. Maxwell; R. McCall; J. McIntyre; J. Hicks; T. Menefee; L. Maxey; R. Larson; W. Marshall.



**MR. THOMAS' HOMEROOM**

Row 1: P. Mitchell; L. Peters; S. Moore; S. Peacock; S. Philbeck; P. Phelps; C. Perry; J. Nadeau. Row 2: H. Mosley; C. Parks; M. Morgan; M. Pancenta; S. Peterson; W. Parks; R. Miller; S. Polsky; J. Montalvo; G. Peters. Row 3: D. Peters; M. Palmer; R. Pierce; P. Nigg; J. Ordal; P. Nogle; R. Pettyjohn; M. Pond; P. Paris; D. Moyer; Mr. Thomas.



### MRS. HEWITT'S HOMEROOM

Row 1: A. Warburton; D. Dixon; C. Doyle; J. Cox; C. Duderstadt; S. Defreitas; J. Dye; S. Disney. Row 2: S. Davies; K. Flanigan; C. Dawson; G. Spruce; J. Eaton; M. Blankenship; L. Emmett; O. Drollinger; Mrs. Hewitt. Row 3: D. Daniels; W. Dennis; R. Dorset; G. Fehr; P. Duker; R. Ebeling; C. Danner; F. De Puy.



### MR. LIENWEBER'S HOMEROOM

Row 1: V. Palacios; S. Wilborn; S. Wylie; H. Weeks; K. Kepley; M. White; C. Wandell. Row 2: J. White; W. Wheeler; G. Wilson; H. Williams; R. Webb; B. York; A. Witter; B. Cook; Mr. Leininweber. Row 3: C. DuFrane; T. Wininger; E. Williams; J. Williams; K. Westlund; B. McCready; W. White; T. Webber; J. Winfrey. Absent: B. Westwater; C. Miller.

### FRESHMAN CLASS

translating the passive voice—dissecting earthworms—factoring—GREAT EXPECTATIONS—slumber parties—longer assignments—pennies for G.A.A.—independence—marching band—play tryouts—Alpha

#### OFFICERS

Chuck Roderick, Pres.; Charles Price, V.P.; Liz Hile, Sec.; Karen Thomas, Treas.; Nancy Risser, Pub. Ch.



Hi Karen!  
 thought red  
 we different again  
 Hand mine  
 good  
 good luck.  
 Just the  
 says  
 "good"  
 now!  
 Love ya  
 Liz  
 '62



### MR. BRUCKBAUER'S HOMEROOM

Row 1: C. Freeman; J. Hughes; J. Cook; E. Elam; M. Duncan; T. Fisher; C. Edwards; M. Fears; M. Fryslic. Row 2: K. Gilliland; A. Forsyth; J. Fryer; D. Fletcher; G. Gladding; R. Durst; G. Douglas; A. Elam. Row 3: T. Drollinger; D. Eddy; J. Eckerty; S. Gallagher; K. Fasking; M. Flesner; D. Franklin; V. Dunkley. Row 4: Mr. Bruckbauer; R. Mock; S. Frantz; P. Everitt. Absent: D. Gleason.