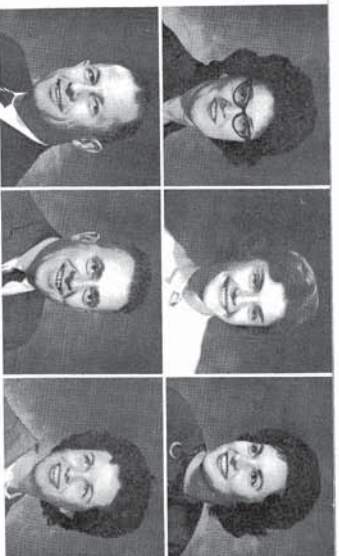


MARIANNE LEDBETTER—B.S. Villa Maria College, Massachusetts; Student Typing; CAROL LESTER—B.A. M.A. U. of I.; English; Rosemary HARRITT MAYBERRY—A.B. U. of I.; English; Student Council.

DONALD L. McALLISTER—B.S.Ed. Illinois State U., M.A. Colorado State C. of Ed.; Diversified Education; Diversified Education Club. JACK McNEVIN—B.S. M.S. U. of I.; Bookkeeping, Counseling. PATSY H. MURPHEE—B.S. Mississippi State U., M.B.Ed. U. of Mississippi; Elementary Typing, Advanced Typing, Office Practice, Commercial Club.



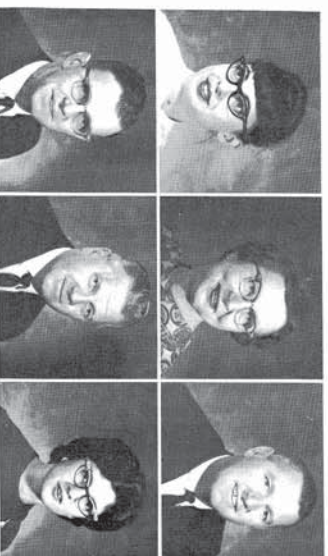
JUDITH MURPHY—B.A. U. of I.; English, Asst. with Speech Activities. AUDREY RENFRO—B.A. Illinois State; English. JOHN ROBERTSON—B.S., M.S., Adv. Cert. U. of I.; Industrial Arts.

RUTH ROSS—B.F.A. U. of Oklahoma; M.Ed. U. of I.; Art. ROBERT E. RUNDUS—B.A. Park C.; M.Ed. U. of I.; Trigonometry, Algebra, Analytic Geometry. BETTY SCHENK—B.S. U. of I.; Special Education.



SUSAN SCHWARTZ—B.S. City C. of N.Y.; M.S. U. of I.; Chemistry; Chemistry Club. MARLEN SEWARD—B.A. M.A. U. of I.; English. HERB SLIGER—B.S. M.Ed. U. of I.; P.E., Drivers Ed.; Asst. Football Coach, Asst. Track Coach, "Q" Club.

PAUL SMITH—B.S. M.S. U. of I.; Physics. JETS. WARREN SMITH—B.S. Wisconsin State U., M.E., U. of I.; Football Coach, Asst. Track Coach, P.E., "Q" Club. PATRICIA SMOOT—B.S. M.S. U. of I.; U.S. History, World History; Co-sponsor Junior Class.



TAYLOR THOMAS—B.S. M.S. U. of I.; Sociology, World History, French. FRANK WINSKY—LL.B. U. of Paris, M.A. U. of I.; French; French Club. VIRGENE VATTI-HAUER—B.S. U. of I.; Geometry, Algebra.

GARY WEHAGE—B.A. Augustana C. M.A. U. of I.; U.S. History. MAX WHITE—B.Ed. Eastern Illinois U. M.A. U. of I.; Earth Science, World Geography; Ticket Manager. BONNIE K. YACK-OVLEV—B.S. M.S. U. of I.; Biology.





Seniors Play the Waiting Game

Senioritis has been described as a feeling of time passing too slowly and homework that just doesn't seem to get done. It becomes more acute as days get warmer and longer and talk turns from chem. assignments to college plans, job opportunities, and those last senior parties. But memories of the Big 12 Football Championship, First Place Float, Mrs. Seward's pig, and the class picnic are not lost in senioritis—they are a part of its sadness, a part of the first awareness that the routine and security will soon be gone.

OFFICERS—Richard Briscoe, President; Alicia Weber, Vice President; Carol Cribbet, Publicity Chrm.; Dave Hodgman, Treasurer; and SEATED Sally Walker, Secretary.

Steve Gilbert, Ken Marshall, and Louis Casagrande scrape the HOOD OF Louie's car with a hose!



Barry Karlberg maintains his composure as he is sucked up by a vacuum cleaner.



Sherry Clemins checks the water temperature.



Smitty Hopkins, Senior Class Hatchet Orator, admires the innocence of Julie Petty which she defended as Junior Class Orator.



Stan Shobe, Deanna Timpone, Sandy Starr, and Sharon Harshbarger strengthen the "senior block" in student council.



Bill May, Eddie McLendon, Bob Morrow, Greg Hawn, and Dick Parks unload the apple of Mrs. Seward's eye, "Sixth Hour."



DAVID ALBERTS, CAROL ARLENE ALLEN—SK 2-4, GAR-
RETT ALLEN "Garry."



HAROLD ANDERSON "Andy"—Library Club 2-4; Football 2,
4; Wrestling 2-4, LEE APPERSON—DO 3-4, STEPHANIE
ARLT "Stevie"—Transferred from Webster Groves High School,
Webster Groves, Mo. 1964; Terrapin 3-4; SK 3-4, Treas. 4; Band
2-4.



PAMELA SHARON BANTZ "Pam"—SK 2-4; Other Chorus
2-3, KAREN BACHERT—French Club 3; Latin Club 4; SK 2-
4; GAA 2-3; Band 2-3; Band Enns. 3, SHERYL JEAN BARNES
—FHA 4; SK 3-4.



DIANA BARNETT "Diane"—FHA 2-4, V-Pres. 4; SK 2-4; DE
Sec. 4, DONNA KAY BARTHELEMY—FHA 2-3, V-Pres. 3;
FTA 3; French Club 2-3; Art Club 3-4; SK 2-4; Library Club
3-4, MARSHA BEASLEY.



KAREN LYNN BAYS—Edho 3-4; Student Council 2-4; SK
2-4; Talent Show M.C. 4; Office Help 3-4; Class Publicity Chm.
3, DAN BEAULIN—Football 2; Track 2; Cross-Country 2.
ROBERT L. BECKETT.



DIANNE BERG—SK 4; Other Chorus 2-4, GEORGIANA
BENNER "Janet"—Rosemary 4; Psi; FTA 2-4; Treas. 4; SK 2-4,
DWIGHT BIALESCHKI "Dike"—U Club 3-4, V-Pres. 3, Pres.
4; Football 2-4; Basketball 2; Track 3.



More information at: <http://www.kccku.edu>

MARILYN BONNEY—Student Council 2-3; Orchestra 2-4, Pres. 3-4; French Club 2; SK 2-4; Majorette 4; Stage Show 2-3; Talent Show 2-3. JOANNE GLEN BOHLEN "Jo"—SK 4; SANDRA BOONE "Sandy"—Pki, Student Council 3-4; FTA 2-4; French Club 2-4; SK 2-4; A Cappella 4; Other Chorus 3; AFS 2-4.

SANDRA KAY BROOKEY "Sandy"—Rosemary 3; FHA 2-3; DE Parliamentarian 4; Commercial Club 3; Gift Glee 2-3; DANIEL BRANTLEY "Dan"—Basketball 2; EUGENE GERALD BROWN "Garp"

LINDA BROWN—French Club 2-4; Art Club 4; GAA 2; RICHARD EUGENE BROWN RICHARD EDWARD BROWN, JR.—U Club 3-4; Football 2-4; Track 3; Wrestling 3-4.

PAMELA BROWN—Rosemary 3; French Club 4; Latin Club 2-3; SK 2-4; Band 2-4; Band Soloist 3; Band Ence. 3; TERRY BROWN—Rosemary 3-4; Asst. Business Mgr. 3; Copy Editor 4; Lambda; Pki; Quill & Scroll 3; SK 2-4; A Cappella 3-4; Gift Glee 2; WILLIAM BROWN "Bill"—U Club 2-4; Football 2-4; Track 2-4.

SHERRY BROWNFIELD, CAROLYN BURCH—Student Council 4; Orchestra 2-4; Publicity Chrm. 4; FHA 4; SK 2-4; A Cappella 2-4; Pres. 4; Madrigals 2-4; Majorette 4; Talent Show 2-4; Stage Show 2-4. DONALD E. BURACKER "Don"—Art Club 2; A Cappella 2-3.

MICHAEL J. BURCH—Transferred from Champaign High School, 1963; Library Club 3; Football 3. RICHARD ALLEN BRISCOE "Rich"—Student Council 4; Jr.-Sr. Prom General Chrm. 3; Class Pres. 4; Basketball 2-4; Green County 3-4; Band 2-4; Band Ence. 2-4. MARGARET BRYANT "Peggy"—Transferred from High Point High School, Belleville, Mo., 1964; SK 4; Band 4; Orchestra 4.





GILBERT E. BURGSTROM "Buck," ROBERTA BURNHAM—Lambda; Latin Club 2; SK 3-4; Band 2-4; Librarian 4; Orchestra 2-4; Dance Band 3; Stage Show 3; Band Eas. 2-4; GWENDOLYN BYERS "Gwen"—FTA 2-4; French Club 3-4; Latin Club 2-4; Publicity Chrm. 4; SK 2-4; Other Chlooses 2-4; AFS 2-4.

TERRY CARLSON "T. C."—Library Club 4; JETS 4; Football 2; Wrestling 2-4; Cross-Country 2-3; Golf 2. MIKE GAIN. LOUIS CASAGRANDE—Rosemary 4; Editor-in-Chief 4; Lambda; Psi; Student Council 2-4; U Club 2-4; French Club 3; Football 2; Basketball 2-3; Golf 2-4; Tigers' Den Council 2-3.

PERRY CARRIER—Football 2; Track 2. COLLEEN CASH—Rosemary 3; FTA 3-4; Latin Club 2-4; Chemistry Club 4; SK 2-4; GAA 2-3; Band 2-4; Librarian 2; Band Soloist 2; Orchestra 2-3; Band Eas. 2-3; Stage Show 3; Talent Show 3. ANNETTA CHAMBERS—FTA 3-4.

Water, Suds, and Cars



JACK CHANDLER—Football 2-3; Basketball 2-4; Track 2-3. JOHN CHANEY—Rosemary 4; U Club 2-4; French Club 3-4; Library Club 4; Chemistry Club 4; Wrestling 2-4; Cross-Country 2-4; Golf 2-4; Band 2; Band Eas. 2. JANET CLARK "Jan"—FHA 2; SK 2-4; Concert Choir 2; Office Help 3.

SHERY LYNN CLEMINS—FTA 2-4; Parliamentarian, 3, V-Pres. 3; Cheerleader 2-4; Res. 2; Vanity 3-4; Capt. 4; Tigers' Den Council 2-4; Sec. 3-4; Talent Show 2-4. DAVID CLARK "Clark"—Library Club 4; Wrestling 2; Football Mgr. 2-3. JOHN COLSON—Rosemary 4; U Club 3-4; French Club 4; Track 2-4; Cross-Country 3-4; Band 2.

JAMES GROKIN. TERRY L. COOPER—*Ede* 4; Pi; Spanish Club 3; Art Club 3-4; Publicity Chm. 3; V-Post 4; Talent Show 3; Stage Show 3. LARRY COOPER—Orchestra 2-4; Orchestra Em. 2-4.

STEVE CUTLER—Transferred from Hoopston High School, Hoopston, Ill., 1963; Football 2-4; Basketball 2; Track 3. CAROL ANN CRIBBET—Attended Ann Arbor High School, Ann Arbor, Mich., 1963-1964; *Rosemary* 4; Lambda; FTA 2-4; French Club 2; Tigers' Den Council 2; Talent Show 2; Class Publicity Chm. 4; Dance Club 3; Ski Club 3. KIRK CURETON—Student Council 2-4; U Club 2-4; Track 2-4; Swimming 2; Cross-Country 2-4; Tigers' Den Council Treas. 4.

CHERYL KAY DAHLEBURG—FHA 3-4; Historian 4; Spanish Club 2; SK 2-4; Library Club 3-4; Commercial Club 3-4; Track 4; Girls' Glee 2-3. ROBERT O. DALTON—"Bob"—DO 3-4; Track 2. RUSSELL E. DALTON "Studly"—DO 4; Library Club 2-3.

LILA JILL DANNER—FTA 3-4; Latin Club 2-4; Aetile 2-4; Band 2-4; Orchestra 3-4; Band Em. 2-4. DELPHIA ELLIENE DAVIS—"Daffy"—Transferred from Dayton High School, Dayton, Ky., 1964; *Dejonia* 3; FTA 2-3; Majorette 2; Office Help 2-3; Tri-Hi-Y 3. PHILLIP LYNN DAVES—Transferred from High Point High School, Beltsville, Md., 1962; Band 2-4.

DIANA DILLON DEMLOW—"DeeDee"—SK 2-4; Library Club 3-4. JUDY DIX—Student Council 2-4; FTA 2; Spanish Club 2; SK 2-4; Girls' Glee 2; Office Help 2. HAROLD DIETLER—"Hal".



First Place Senior Float



DANIEL DUCEY "Duce" ROBERT E. DUVAL "Rabbit"—
U Club 4; Football 2-4; Track 2-3; JOSEPHINE ANN DUNFEE
"Joie"—*Rosemary* 2-4; Latin Club 2-4; SK 2-4; GAA 2-4.

JAMES DUNN "Jim"—Student Council 3; German Club 4;
JETS 4; Chemistry Club 4; Football 2; Basketball 2; Track 2-4;
Wrestling 4; Cross-Country 3-4. DAVID DUNSDON—Trans-
ferred from Madison West High School, Madison, Wis., 1963;
Chemistry Club 4. CATHY DUJF—Transferred from Elmwood,
Ottawa, Ontario, Canada, 1964; Perfect; House Head; House
Volleyball Team; Track and Field meet 2-4; Yearbook 2-3;
French Club 4; GAA 4.

DENNIS ELLIOT—*Thespians* 3-4; Delta Sigma 3-4; *You Can't
Take It with You*; Band 2-4; Band Solists 3-4; Orchestra 4;
Dance Band 2-4; Band Ext. 3-4. STEVE ELLIS—Basketball 2;
Golf 2. LARRY EVESTONE—DE 4; Football 2.

NANCY SUSAN FEARS—FTA 2-4; Latin Club 2; SK 3-4.
LINDA EILEEN FAUST—*Rosemary* 3-4; FTA 2-4; Latin Club
2-4; Program Chrm. 4; SK 2-4; Band 2-4; Band Ext. 2-4; Latin
Club 2. PAUL FABER.

WALTER V. FEITSHANS "Walt"—*Rosemary* 3-4. Asst. Ed. 4;
Echo 3; German Club 3-4; Chemistry Club 3-4; Talent Show 3.
MARGARET J. FILBEY "Madge"—Student Council 4; FTA
2-3; French Club 2; SK 2-4; Chemistry Club 4; Tigers' Den
Council 3; Banner Girl 4. LINDA J. FINNROCK "Frog"—*Echo*
3-4; French Club 2-4; SK 2-4; Chemistry Club 4; Office Help
3-4; Banner Girl 4.

LYNDA LEE FLICK—Art Club 3-4; Publicity Chrm. 4. RHONDA
SUZANNE FLYNN—FTA 3-4; Art Club 2-3; SK 2-4; GAA 2-
3; Library Club 2-4; Office Help 2-3. PETER FONNER "Petie"
—DE 4; Pres. 4; Football Mgr. 2; Concert Choir 2-3.



munisodmys/ltvord/ten.ncvckvlgq/:dthy:te noiwamrofni:erom
 6028-442 'ape.sioinillit2@2trstuen Contact information: nleat



JOHN FRYE—Track 2-3; Swimming 2; Cross-Country 2; A Cappella 4; Concert Choir 3; Boys' Chorus 3. JOHN GILDER—Transferred from Bellingham High School, Bellingham, Wash., 1963. NANCY KATHEEN GARDNER—FHA 2-4, Pres. 4; SK 2-4, V-Pres. 4; Band 4; A Cappella 3; Concert Choir Librarian 2; Spanish Club 2; Talent Show 3-4; Stage Show 3.

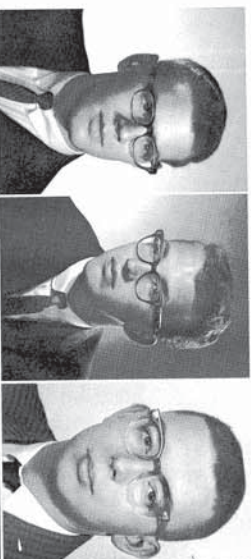
STEVEN M. GILBERT "Steve"—U Club 3-4; German Club Parliamentarian 3; Track 2-4; Swimming 2-4; Cross-Country 2-3; Band 2-4; Band Soloist 2-4; Orchestra 2-3; Dance Band 2-3; Band Ens. 2-4. GILL D. CLADDING—Student Council 2-4; French Club 2; Chemistry Club 4; Class Pres. 2; Track 3; Cross-Country 2; Band 2-4; Band Ens. 2-4; Dance Band 2; Orchestra 2; Tigers' Den Council 2-4; Asst. Drum Major 3; Drum Major 4. VERONICA GERDTS "Koni"—DE 4.

JOAN MYRA GLASER "Joanie"—Transferred from Temple Union High School, Tempe, Ariz., 1963. Echo 2; Tiespians 4; French Club 2; *The Gracible*; Orchestra 2-4. MARGARET EMILY GOFF "Meg"—Echo 4; *Rosemary* 2; FTA 2-3; French Club 2-4; SK 2-4; Other Chorus 2; Office Help 4. BOB GORDON—Art Club 4; Track 2-4; Wrestling 2-4; Cross-Country 3.

F. THOMAS GOTHARD "Tommy"—Football 2; Track 2; A Cappella 2-4; Choral Ens. 2-4. ROGER D. GRACE—Basketball 2-4; Track 2-4; Cross-Country 3. EUGENE GRANDFIELD "Gene"—DE 4.

DEREK GREEN "D. G."—U Club 2-4; Tiespians 2-4; Delta Sigma 2-4; Football Mgr. 2-4; Track Mgr. 4; Wrestling Mgr. 2, 4; *Tweelfth Night*. MARILYN GRIFFIN. BARBARA ANN HACHEMEISTER "Baty"—Transferred from Steinmetz High School, Chicago, Ill., 1963; SK 3-4; Library Helper 2; French Club 2.

Election Fever, Seniors, Too





PEGGY DIANE HAGEMAN—*Echo* 2-4; Lambda; Pi; Thespian 2-4; Delta Sigma 2-4; German Club 3-4; Sec-Treas. 3, Pres. 4; SK 2-4; *Madwoman of Chailloy*, *Ring Around the Moon*. DIANA HALBERSTADT—*Rosemary* 3; SK 2-4; Commercial Club 3-4, V-Pres. 4; Other Chorus 3; Girls' Glee 3. JO ANN HARNEY "Jody"—PHA 2; SK 2-3; GAA 2-3; Commercial Club 4; Other Choruses 2-3.



LEE HARSHBARGER—Chemistry Club 4; Basketball 2-3. SHARON ANN HARSHBARGER—*Rosemary* 3; Student Council 4; PTA 3-4; French Club 2-3; SK 2-4; Band 2-4; Band Soloist 2-4; Dance Band 2-4; Band Enr. 2-4; A Cappella 3-4. Student Director 4; Choral Enr. 3-4. PATRICIA ANN HANES "Pat"—*Rosemary* 3, Asst. Activities Editor 3; Student Council 2-4, Sec. 3, Pres. 4; PTA 2-4, Historian 3, Spanish Club 2-4; SK 2-4; Th-Hi Council 3-4; Band 2-4, Asst. Sec. 3, Sec. 4; Band Enr. 2-4; Stage Show General Chm. 2-4; Talent Show 2-4.



MICHAEL S. HART "Mike"—French Club 3-4; Latin Club 2; German Club 2-4; JETS 2-3; Chemistry Club 3-4; Math Club 4. GREG HAWN—*Echo* 4; Tigg 4; Talent Show 4. STEVE HATTER—*Mad Woman of Chailloy*. LARRY J. HARVEY "Jee"—U Club 3-4; Football 2-4; Track 2-3.



BETTY JEANETTE HATTER—PHA 2-3; SK 3-4; Girls' Glee 2-4. GREG HAWN—*Echo* 4; Tigg 4; Talent Show 4. STEVE HAUERSPERGER—Basketball 2; Track 2-3; Cross-Country 3.



SARA HEIKOFF—Lambda; Orchestra 4; Orchestra 2. CAROL SUZYANNE HEDRICK "Suzy"—Transferred from Fisher High School, Fisher, Ill., 1963; *Rosemary* 3-4; PHA 2-4; SK 2-4; GAA 2; Band 2-4. JUDITH HENDERSON "Judy".



LORRAINE HENDRICKS "Lori"—Transferred from Homer High School, Homer, Ill., 1962; Student Council 2; Art Club 4; SK 2-4. SHARON GAUDLE HENDRICKS "Shari"—DE 4; Girls' Glee 3. STEVEN HESSELCHWERDT.

ORVILLE JOSEPH HEWIKIN III "Joe"—U Club 3-4; Football 2-4; Track 2-3; Wrestling 2-4; Boys' State 3. DIANE HILDRETH, DAVID HODGEMAN "Hodge"—*Rosemary* 4; Student Council 4; Class Treasurer 4; Track 2-3; Swimming 2; Cross-Country 4.

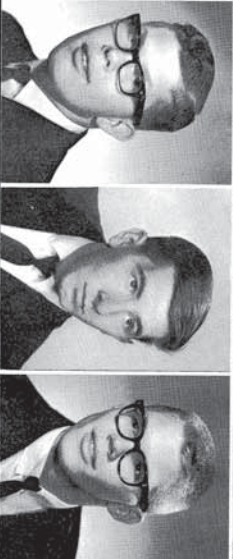
EVAN HOLMES "M. F."—Transferred from Plymouth-Carver High School, Plymouth, Mass., 1964; Varsity Club 2-3; Class V-Pres. 2; Football 2-4; Track 2-3. SMITH HOPKINS "Smithy"—Lambda V-Pres.; Psi; Student Council 2; Swimming 2-4; Band 2-4; Band Ens. 3-4; Dance Band 3; Tigers' Den council 2-3; Harriet Orator 3-4; Boys' State 3. JIM HORD—DO 4; Library Club 2-3.

JACQUELINE HOWELL "Jackie"—*Rosemary* 3-4; Lambda; Psi; FTA 2-4; French Club 2-4; SK 2-4; Band 2-3. DENNIS HUMES, CHARLES HURLIMAN—Basketball 2-3; Band 2-4; Band Ens. 2.

BETTY LORRAINE IRVIN—FHA 4; SK 4. PAUL D. JACOB—U Club 3-4; Football 2-4; Track 3; Wrestling 2-4, Capt. 4; Band 2-3; Band Ens. 2-3; Dance Band 2; Orchestra 2-3; Boys' State 3. GERALDINE SUE JAMES "Sue"—FTA 2-4; German Club 3-4; SK 2-4; GAA 2-3; Library Club 2-4; Co-Pres. 3.

KEITH JOHNSON—DO 4. ELIZABETH JOHNSON "Lise"—*Rosemary* 3; Lambda; Psi; FTA 3-4; French Club 2-4, Sec. 3, Pres. 4; SK 2-4. MARILYN JUDD—*Echo* 4; Lambda; Psi; FTA 2-4; Latin Club 2-4, Sec.-Treas. 4; SK 2-4; A Cappella 3-4, Librarian 4; Choral Ens. 3-4; Concert Choir 2; Banner Girl 4; Talent Show 3-4; Stage Show 3.

RAY KARNES—FTA 3-4; Library Club 2-4, Co-Pres. 3, Treas. 4; Cafeteria Help 2-4. KENNETH WAYNE KARR "Kenny"—Art Club 3-4, Publicity Chrm. 4; Track 2-4; Swimming 4; Cross-Country 2-3. BARRY KARLBERG—U Club 4; Football 2-4; Track 2-3; Wrestling 2-4; A Cappella 2-4; Stage Show 3; Talent Show 3.





CHERYL KELLY—"Kelly"—FTA 3-4; Spanish Club 2-4; SK 2-4; GAA 3-4. KARYN LYNN KELLER—Student Council 2-4; Terrapin 2; Orchestra 4; FTA 3-4; French Club 2; SK 2-4; Other Chorus 2; Cheerleader Res. 2; Varsity 3; "Tigers" Den Council 2-4; Banner Girl 4; Talent Show 2-3. THOMAS J. KELLY—"Tom"—Lambda; Psi; Student Council 4; Band 2-4; V-Pres. 4; Band Ens. 2-4; Dance Band 3-4.



CHRISTINE KIERSCH—"Chris"—Lambda; Psi; German Club 3-4; Treas. 4; SK 2-4; GAA 2-3; Orchestra 2-3. JOHELLYN KELSEY, JACK KIENER.



ANNETTA KILLINGER—"Annetta"—Transferred from American Graded School, Sao Paulo, Brazil; *Rosemary* 4; Student Council 4; Latin Club 4; SK 4; Drill Team Capt. 3; Jr.-Sr. Banquet Chm. 3. PAUL KILLINGER—"Paul"—Transferred from American Graded School, Sao Paulo, Brazil; Yearbook Asst. Editor, 3; Student Council 3; Science Club 2; Tennis 3; *Guy and Dollie*; Orchestra 2-3; A Cappella 4; Medicine 4. KIM KIMBERLIN—"Kim"—Football 2-4; Co-Capt. 4; Basketball 2; Track 2-3; Swimming 3; Boys' State 3; Science Club 3.

Perfect Football Season



ALVIN KING—"Al"—Art Club 4; Basketball 2-3; Science Club 3. PHIL KING—"Phil"—Library Club 4; Track 2; Cross-Country 2. ROY J. KING—"Bud"—DO 4; Library Club 4.



TERRY KING, MICHAEL W. KONRADT—"Mike"—ATHLETE. ANNE KLITSCHER—"Ann"—AFS Exchange Student from Invercargill, New Zealand; Student Council 4; FTA 4; Art Club 4; SK 4; A Cappella 4.

KONNY KRANTZ—Transferred from Redlands High School, Redlands, Calif., 1964; *Rosemary* 4; French Club 4; Art Club 4; SK 4; Pep Club 2-3; GAA 2-3; Art Club 2-3; Yearbook 2-3; French Club 2-3. ANITA MARIE KROES—*Rosemary* 4; FTA 3-4; French Club 3; SK 2-4. JOYCE ANN LAIN—SK 2-4; Commercial Club 4; GAA 2; Office Help 3-4.

JAMES DAVID LANG "Dave"—Homecoming General Chairman. 4; Tiger Den Council 4; Student Council 2-3; German Club 3-4; V-Pres. 4; Basketball 2-4; Track 2-4. JAMES EDWARD LAWLER "Jim"—Football 2; Band 2-3; Band Eas. 2-3; A Cappella 4; Boy's Glee 2-4. LUIS LEAL "Louie"—Psi; Delta Sigma 4; Spanish Club 3-4; V-Pres. 4; Art Club 3-4; Treas. 3; Pres. 4; *The Crusible*.

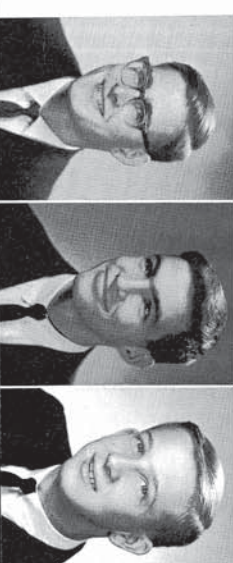
DAVID LEWIS "Dave"—Transferred from Hoopeson High School, Hoopeson, Ill., 1963; Science Club 2; Basketball 2-4; Track 2-4; *Our Town*. JOHN ROBERT LIENTZ "Bob". ROBERT LERCH "Bob"—Basketball 2-4.

LINDA KAY LINDEMAN—SK 2-4; A Cappella 3-4; Choral Eas. 3-4; Other Chorus 2. JEANNIE LOVENGUTH—FTA 2; SK 2-3; DE 4; Girls Glee 2-3. PATRICIA FRANCES LONG "Pat"—*Edho* 3-4; Feature Editor 4; Lambda; Psi; Quill & Scroll 3-4; FTA 2-4; Treas. 3; Pres. 4; French Club 2-3; SK 2-4; Band 2-4; Band Eas. 3; State Treas. IAFIA.

RICHARD LYMAN "Rick"—*Rosemary* 3-4; Sports Editor 4; Lambda; Pres. Psi; Quill & Scroll 3-4; Student Council 2-4; Track 2; Cross-Country 2; Band 2-4; Band Soloist 2; Band Eas. 2; Dance Band 2-4; Orchestra 2-4; AFS Student 3. ROGER MAHANNAH—DE V-Pres. 4. BILL MAJORS—Track 2; Swimming 2; Cross-Country 2.



Perfect Senior Year



SYLVIA MARIA THERISA MANGIAN—Office Help 3, JOHN
MARETT "Jack", ALLEN MANSFIELD.



KEN MARSHALL—Transferred from Gibson City High School
Gibson City, Ill., 1963. GEOFFREY ALAN MAUTZ—Sports
Club 2-3; Library Club 2; Basketball 2-4; Golf 4. BILL MAI-
U Club 2-4; Football 2-4; Track 2-4; Wrestling 2-4.

SHERRY JEAN MEARTY—FHA 4; Art Club 2; SK 3-4;
Concert Choir 2-3; Office Help 3. ED McCLENDON—U Club
3-4; Student Council 2; Chemistry Club 4; Football 2-4; Track
2-4; Band 2; Tigers' Den Council 2. RONDA LYNN Mc-
CLENNAN—Orchestra 4; FFA 2; French Club 2; SK 2-4; Business
Girl.

Cadet Teaching, College Boards



JANET McCANN—FFA 4; SK 2-4; Chemistry Club 4; Girls'
Glee 2; Concert Choir 3. DIANNE KAY MERRIDITH—FFA
3-4; Library Club 2. BILL McQUEEN.

CATHY SUE McKENNELLY—Student Council 2-3; Orchest
3-4; SK 2-4; Majorette 2-4. Head Majorette 4; Homecoming
Attendant 2. JIM MOORE. MAURICE MILLER—Frend
Club 2-4; JETS Sec.-Treas. 2-4; Band 2-4; Band Enns 2-4; Dance
Band 2-4; Chemistry Club Pres. 4.

JOHN R. MORROW—Library Club 3-4; Publicity Chrm. 4; Football 2-4; CONNIE MILLER—SK 4; DE 4; Girls Glee 2-3. HOBART TODD MOWERER—Student Council 2-4; Spanish Club 2; Track 2; Swimming 2; Cross-Country 3.

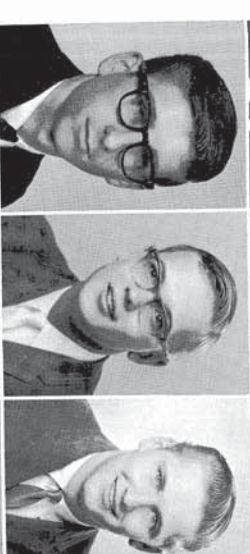
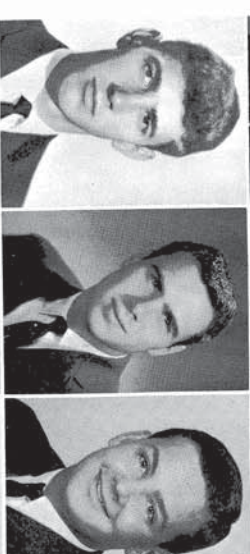
RUTH MUSEY—*Echo* 3-4; Circulation Mgr. 4; German Club 3-4; SK 2-4; GAA 3. DAN NALLEY, WILLIAM R. NOYES "Bill"—U Club 2-4; Track 2-3; Swimming 2-4; Capt. 4.

BOB NICHOLS "Nick"—U Club 3-4; Wrestling Mgr. 3. CAROLE JEAN OGATA—Student Council 2-4; Orchestras 2-4; SK 2-4; A Cappella 3-4; Concert Choir 2; Choral Enrs. 3-4; Churchleader, Res. 2; Varsity 3-4; Tigers Den Council 2-4; Publicity Chrm. 4; Stage Show 2-3; Talent Show 2-4; Class Publicity Chrm. 2. LANE APRIL OLSON—French Club 3-4; Latin Club 2; SK 2-4; GAA 2-3; Band 2-4; Band Enr. 2-4.

GEORGE ORMISTON "Dev", RICHARD C. PARKS "Dick"—Student Council 2; U Club 2-4; Chemistry Club 4; Football 2-4; Basketball 3-4; Track 2-4; Golf 3-4. DAVE PATTERSON—Football 2-4; Track 2-3.

CHARLES PENNY "Charlie", BEN PETERSON, PHILLIPS PHELPS "Phil"—DO 3-4, Pres. 4.

SKIP PHELAN—Cross-Country 2; Golf 4; Band 2-4; Dance Band 2-4. THERESA POLSTON "Terrie"—Art Club 2-3; SK 2-4; GAA 2-3; Commercial Club 3. JAMES POMERNACKI "Jim"—*Echo* 2-4; Art Club 3.





PAMELA PRYOR "Pam"—Student Council 2; FHA 3-4; SK 2-4; Office Help 2-3; PATRICIA POWERS "Patti"—SK 2-4; GAA 2; Commercial Club 4; Concert Choir 2; Girls' Glee 3; STEPHEN LYNN RACER "Steve"—Library Club 3; Track 2-3.



JOSEPH S. RANK "Joe"—Class Treas. 2; Student Council 2; Latin Club 2-4; Band 2-4; Band Ensl. 3-4; Band Council 3-4; LAWRENCE THOMAS RANGE "Larry"—Spanish Club 3; Chemistry Club 4; Football 2; HAROLD RAVLIN—Camera Club 2; JETS 3; Chemistry Club 4.



CLEMENT L. REYNOLDS "Sammy"—RITA RAMDIN, CAROL RICHARDSON.



BRENDA RHODES—SK 4; Orchestra 2-3; MELVIN J. RICKETTS—JETS 4; Chemistry Club 4; ROSE E. RODERICK—FHA 2-4; SK 2-4.



LINDA ROSENBERGER, PAULINE MARIE ROGERS—Transferred from Farther High School, New Orleans, La., 1965; SK 3-4; GAA 3; DE 4; LINDA JEAN RONK "Jeanie"—FHA 3-4; SK 2-4; DE Treas. 4.



SUZAN ADELLE ROSS—Thespians 3-4; Delta Sigma 3-4; Latin Club 2; Student Council 3-4; SK 2-4; AFS Publicity Chrm. 3-4; Girls' Glee 2; *You Can't Take It with You*; *Twelfth Night*; Co-Homcoming Chrm. 3-4; RONALD ROSS "Ron"—ROSELLA RUCKES—FHA 4; SK 2-4; Sec. 4; GAA 2; Library Club 2; Concert Choir 2-3; Banner Girl 4; Class Treas. 3.



DIANE RUTHSTROM "Doe"—Lambda 2; FHA 3-4; SK 2-4; GAA 2-3; Library Club 2-4; Pub. Chrm. 3; Pres. 4; Commercial Club 4; CHARLES ALAN SAPIKENS "Chick"—Latin Club 2. MARK W. SCHMIDT—U Club 2-4; German Club 3; Parli-mentarian 4; Track 2-4; Cross-Country 2-4; Capt. 3-4; Tiger's Den Council 3-4.

JAMES M. SCHROEDER "Jim"—Football 2; Track 2. WILLIAM SCHROEDER "Bill"—Golf 3; Track 2; Football 2; Basketball Mgr. 2; MARILYN SCHWART—FTA 3-4; French Club 2-4; Art Club 4; SK 2-4.

BETTY JANE SCOTT—FHA 3-4; SK 4; Glee Club 3; Concert Choir 4. STEVEN SEYLER "Steve"—French Club 2-4; Commercial Club 3-4; Golf 2. ROBERT MICHAEL SHEETS "Mike"—U Club 2-4, Sec. 4; Football 2-4; Co-Capt. 4; Track 2-4; Band 2.

STANLEY CLARK SHOE "Stan"—Lambda; Pi; Student Council 3-4; U Club 4; Spanish Club 3-4; Class Treas. 3; Track 2; Swimming 2-4; Cross-Country 2-4. HARRIET MAE SHULL—Transferred from Plainfield High School, Plainfield, Ill., 1963; Rosemary 4; FHA 4; Band 2; Spanish Club 2; SK 2-4; GAA 2; Commercial Club 3-4; Publicity Chrm. 4; Office Help 3-4. JAMES EDWARD SIMPSON "Eddie"—Student Council 3; Art Club 3; Library Club 2-4; Co-Pres. 4; Class Pres. 3; Football 2; Golf 2; Basketball Mgr. 2; A Cappella 4; Concert Choir 3-4; Cafeteria Help 3-4.

CRYSTAL SLADE "Chris"—Rosemary 3; Student Council 3; Spanish Club 2-4; SK 2-4. MARY LOUISE SLADE—Spanish Club 3-4; SK 3-4; GAA 2-3; Treas. 3; Commercial Club 4. MARVIN SLADE "Marty"—U Club 2-4; Wrestling 2-4; Cross-Country 2-4.

CELIA GAY SMITH "Saxie"—FHA 2-4; SK 2-4; GAA 2-3; Chemistry Club 4; ROBERT K. SMITH "Bob"—JO 3-4; Li-brary Club 2-3; Football 2; Track 2. TOM SMITH—Delta Sigma 4; Chemistry Club 4; The Crusade.





PENNY SNODGRASS—Transferred from Champaign High School, 1964; Latin Club 1-2; Girl Service League 2-3; Chemistry Club 4; Student Activities Association 2-3; Pep Club 1-2.

DEA
licity
Club
Chem
Stage
cel 2
JRU
4; T



HEIDI STANNHNE—German Club 2-4; SK 2-3; GAA 2-3; Other Chorus 2-4; JUDY KATHRYN STANNHNE—FHA 2-3; SK 2-4; GAA 2-3; Commercial Club 4; PATRICIA STOUT "Party"—Orchestra 4; FTA 2; French Club 2; SK 2-4; Banner Girl 4.

THC
3-4;
ball
Lam
Co-S
Scot
kerke
2-3;
Chor



SANDRA STARR "Sardy"—Lambda Sec.; Pi V-Pres; Student Council 2-4; French Club 2-4; Treas. 3-4; SK 2-4; Tri-Hi Council 2-3; AFS General Chm. 4; Talent Show 2-4; Class Sec. 2; A Cappella 3-4; Madrigals 4; Other Chorus 2; Tigers Den Council 2; Banner Girl 4; STEWART STODDART "Stew"—Football 2; Football Mgr. 3-4; Head Mgr. 4; UDELL STRACK.

PAU
4; S
VARS
Chen
Band
from
Club



KARLA SULLIVAN, GREGORY ALLEN SUMMERS "Greg"—Echo 3-4, Sports Advisor 4; *Rosemary* 2; Quill & Scroll 4; Theopians 4; Delta Sigma 4; Science Club 3; JETS 3; Chemistry Club 3; *The Crusader*; Band 2-4; Band Soloist 3-4; Band Ent. 2-4; Dance Band 2-4; Orchestra 2; Talent Show 2-4; Stage Show 2-3; Band Council. VIRGINIA ANN TAYLOR "Ginny"—Echo 2-4; Ed. Asst. 2; News Ed. 3; Co-Editor-in-Chief 4; Quill & Scroll 3-4; Student Council 2-4; V-Pres. 4; FTA 4; Latin Club 2-4; Pres. 4; SK 2-4; Chemistry Club 4; Tri-Hi Council 3-4; A Cappella 2-4; Librarian 3; Choral Ent. 2-4; AFS 3-4; Talent Show 3-4; Stage Show 3.

SAN
High
Club
4; T
ANN
SK 4



LINDA DIANE SUMMITT—FHA 2-4, Historian 3, Sec. 4; SK 3-4, DALE THARP—DE 4, GREGORY THOMAS "Greg"—Theopians 4; Delta Sigma 2-3; French Club 2; Swimming 2; *The Crusader*; AFS General Comm. 3.

DEL
Club
Tale
du:
2-4;
Club
WAL
Pres.
The



LINDA KAY THOMAS—Transferred from Perenchburg Harris High School, Perenchburg, Ill., 1963; GAA 2; Library Club 2; Band 2-3; Chorus 1; Pi; SK 3-4; International Student Society, Sec. 2; Pep Club 1-2; Wig n' Paint 2; TTM THEESFIELD—Echo 2-4, Sports Co-Editor 3, Asst. Ed. 4; Lambda; Pi Pres.; Quill & Scroll 3-4; German Club 4; Talent Show 2-4; Stage Show 2-3; Class V-Pres. 2; JETS 3-4; Chemistry Club 4; Band 2-4; Pres. 4; Band Council 4; DOROTHY JEAN THOMPSON—Transferred from Henry High School, Byhalia, Miss., 1963; FHA 2; SK 2-4; GAA 2-4; Library Club 2-4; Majorette 2; Office Help 2; Junior Choir 2; Pep Club 2; Librarian 2-3.

JOH
Comm
from
Cour
Club
2; I
Asst.
3-4;

and Careers

Champaign High
League 2-3; Chemis-
try 2-3; Pop Club 1-2-
3; 2-4; Commercial
Club 2; *Rosemary* 3;

DEANNA TIMPONE—Student Council 2-4; Orchestra 2-4; Pub-
licity Chrm. 3; V-Pres. 4; FTA 2-4; French Club 2; SK 2-4;
Cheerleader, Res. 2; Varsity 3; Banner Girl 4; Talent Show 2-4;
Stage Show 2-3; CHARLES EDWARD TREAT—Student Coun-
cil 2; Chemistry Club 4; Football 2; Basketball 2-4; Track 2;
JERRY TREAT—U Club 2-4; Football 2; Basketball 2-4; Capt.
4; Track 3-4;

SK 2-3; GAA 2-3;
ANNER—FHA 2-3;
PATRICIA STOUT
2; SK 2-4; Banner

THOMAS TRESSLIAR "Tom"—Student Council 2; U Club
3-4; Spanish Club 2-3; Chemistry Club 4; Football 2-4; Basket-
ball 2-3; Track 2-4; Boys' State 3; KENT TUCKER "Tuck"—
Lambda; French Club 2; JACK LYMAN TUTTLE—*Echo* 2-4;
Co-Sports Editor 3; Co-Editor-in-Chief 4; Lambda; Psi; Quill &
Scroll 3-4; Theopians 4; Delta Sigma 3-4; Latin Club 2-4; Bas-
ketball 4; *Tweeth Night; The Crucible*; Band 2-4; Band Soloist
2-3; Band Enr. 2-4; Dance Band 2-4; Orchestra 2-3; Boys'
Chorus 2-4; Talent Show 2-4; Stage Show 2-3.

Pi V-Pres; Stu-
3-4; SK 2-4; Tri-Hi-
Show 2-4; Class Sec.
urities 2; Tigers' Den
TODDART "Stew"—
4; UDELL STRACK

PAUL M. VAN ARSDELL, JR.—Latin Club 2-4; Science Club
4; Swimming 2-4; Band 2-4; Boys' State 3; MINAS NICHOLAS
VASSOS "Mickey"—*Echo* 2; U Club 4; Spanish Club 2-3;
Chemistry Club 4; Tigers' Den Council 2; Track 2; Wrestling
2-4; Cross-Country 3-4; Golf 3-4; Band 2-3; Band Soloist 2;
Band Enr. 2-3; JO LYNN VAN VALKENBURG—Transferred
from El Cerrito High School, El Cerrito, Calif., 1963; German
Club 2-4; *Echo* 3.

4 SUMMERS "Greg"
2; Quill & Scroll 4;
3; JETS 3; Chemistry
Soloist 3-4; Band Enr.
Show 2-4; Stage Show
TAYLOR "Cindy"—
tor-in-Chief 4; Quill &
4; FTA 4; Latin Club
3; Tri-Hi Council 3-4;
2-4; AFS 3-4; Talent

SANDRA VANCE "Sandy"—Transferred from Champaign
High School, 1964; RALPH WALDRON—U Club 2-4; French
Club 3; Chemistry Club 4; Football 2-4; Basketball 2-4; Co-Capt.
4; Track 2-4; Tigers' Den Council 4; Boys' State; GRETCHEN
ANNE WALDEN—French Club 3; Latin Club 2; Art Club 4;
SK 4; Band 2-3; Band Enr. 3.

Historian 3; Sec. 4;
CRY THOMAS "Geg"
Club 2; Swimming 2;

DELORES ANN WALKER "Dee"—FTA 3-4; FHA 2; Latin
Club 2-4; SK 2-4; Chemistry Club 4; Band 2-4; Band Enr. 2-4;
Talent Show 3; SARAH WALKER "Sally"—*Rosemary* 3; Lambda;
Psi, Sec. 3; Student Council 3-4; SK 2-4; Terrapin 3; FTA
2-4; Sec. 4; French Club 2-4; Sentinel 3; Girls' Glee 2; Concert
Choir Pres. 3; Talent Show 2-4; Class Sec. 4; WILLIAM C.
WALKER "Bill"—Theopians 2-4; Delta Sigma 2-4; Sec. 3; V-
Pres. 4; *Medusomn of Chailiot; You Can't Take It with You;*
The Crucible.

from Petersburg Harris
2; Library Club 2; Band
nal Student Society, Sec.
IM THESELD—*Echo*
mbda; Psi Pres.; Quill &
w 2-4; Stage Show 2-3;
ub 4; Band 2-4; Pres. 4;
HOSKRO—Transferred
1963; FHA 2; SK 2-4;
2; Office Help 2; Junior

JOHN WALKER—Spanish Club 2; Library Club 2; Cross-
Country 3; Wrestling 2-3; BETH WATTENBERG—Transferred
from Overseas School, Rome, Italy, 1963; *Rosemary* 4; Student
Council 3-4; Terrapin 3-4; V-Pres. 4; Delta Sigma 4; French
Club 3-4; Science Club 2; SK 3-4; GAA 2; Band 3-4; Band Enr.
2; Homecoming Chrm. 3; KATHY WARDLOW—*Echo* 2-3;
Asst. Ad. Mgr. 2, Ad. Mgr. 3; FHA 2-3; V-Pres. 3; SK 2-4; DO
3-4; Sec. 3; Parliamentarian 4; Spanish Club 2.

