

New Jobs and Careers

Community Technology and a new High Speed Internet in C.I.I.



Table of Contents

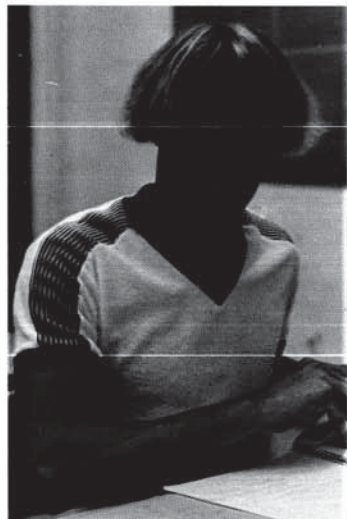
Activities	18
Sports	48
People	80

Urbana High School
Enrollment - 1226
Publisher - Heff Jones
Volume 71

Editor - Linda Randall
Advisor - Sherry McCellan
Cover - Dan Smith
Copy - Lois Wragman



Urbana



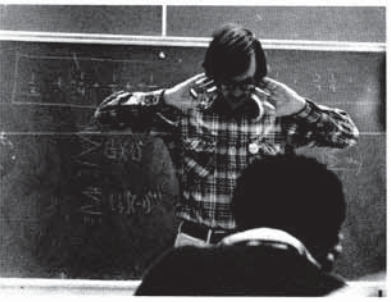
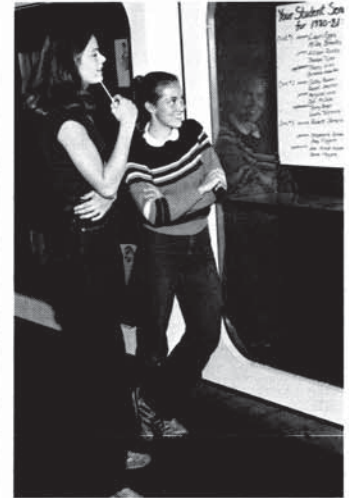
7:55. First bell rings. Got to hurry. Can't be late to class. No time to stand in tardy lines. Open locker, grab books, run to class. Get ready to work. No

time to talk. 55 minutes later, class is over. New room, new class, new teacher. New ideas. Directions changing all the time. Get to hurry. No time to stop.



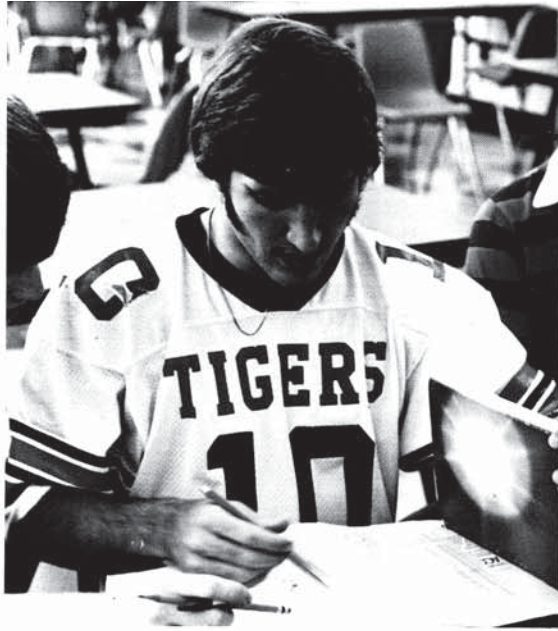
more classes, more teachers, more confusion. Things to prepare for. How will those senior portraits turn out? Frayed nerves waiting for ACT and SAT scores.

moves so fast. Have to find a definite direction. Help! Need more time. Grades are important. Will mine be good enough? What if they aren't?



Bells, fire drills, announcements. Where now? What to do? Trapped! Have to choose the most important things. Time to make those important decisions. Pick the

right friends. Find people to go with or go alone. What will be the best? What do people think? Have to find my place soon!



Courses, courses. Where to go, what to do? What direction to take? Time to choose a schedule. What should it be - vocational, college prep, a work program? So many

Rhet, accounting, art, Band, P. U. P. S., Math, I. C. E., German? Decisions, decisions. Make a choice; change your mind. Get a schedule that leads you in the direction



PICK YOUR OWN LUNCH

INSTEAD OF WAITING IN LINE FOR YOUR LUNCH, YOU MAY PICK YOUR OWN LUNCH FROM THE MENU.

THE MENU HAS BEEN DESIGNED TO OFFER THIS PROGRAM TO ALL HIGH SCHOOL STUDENTS, AND WE ARE ALSO OFFERING THE PROGRAM TO ALL STUDENTS IN THE JUNIOR HIGH SCHOOL.

IF YOU ARE NOT AN APPROVED PERSONNEL, PLEASE ASK WELLS. HAVE YOUR OWN MONEY.

1. The lunch will consist of 3 different items: Meat, Vegetable, Fruit, Bread, Milk.
2. The lunch costs 1.00 whether you pick 1, 2, or 3 items.
3. You may pick up lunch 2 different times from one 1.00 bill. (Choose 2 different items at 2 different locations will double.)

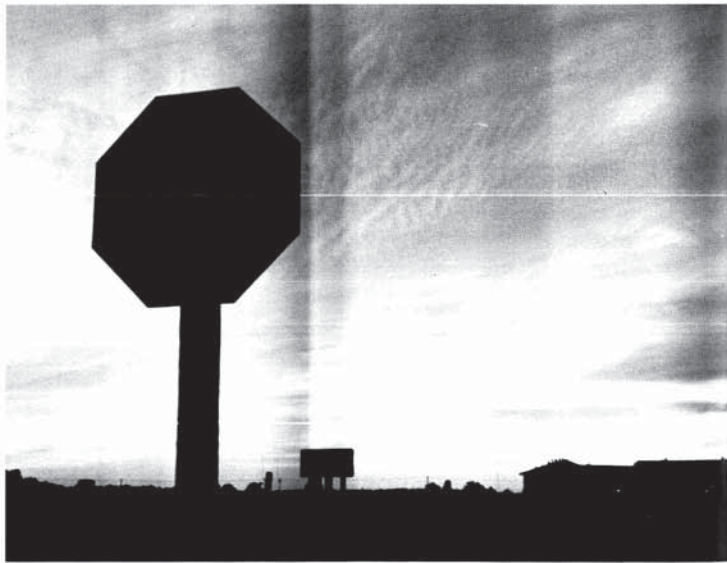
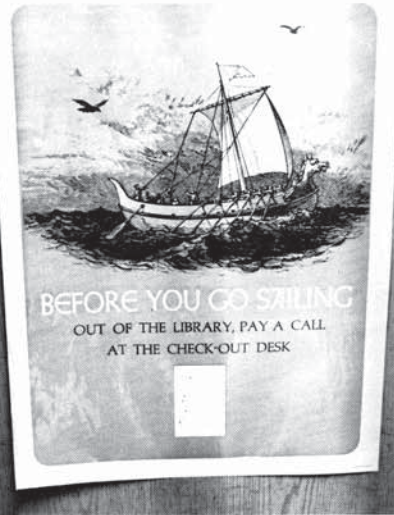
IMPORTANT NOTES TO REMEMBER:

1. Any 2 items with the exception of bread and milk will cost 1.00.
2. A sandwich needs a bun to be considered 2 items.
3. Single orders of one food will not count as 2 items.



No pop machines. No morning break. 11:05, bell rings. Lunchtime. FOOB! Relief. The morning is over. Head for the cafeteria; head for your cars and McDonalds,

money? Who cares about a nutritional lunch? Time to see your friends; relax for a little while. Check the time. 5 minutes 'til class starts! Run to the locker again. Rush to



Afternoons are long. Drift off to after school. Wish I had more time to be with friends, get to the library, watch the soaps and the M.A.S.H. re-runs, talk on the

phone, hit campus, find a party, buy the new R.E.O. album, listen to K104 or WKRW, get tickets for Van Halen. The list goes on forever. Time doesn't



October 3. Homecoming. Spirits soar. Get those floats finished! Thursday night. Bonfire. Whose float won? Seniors! Hurray! The Snake Dance - tired shoulders, sore feet, raised spirits. Friday. Pep rally. It's

King Jack McGrath and Queen Sheryl Dearth. Excitement grows. Game time! Defeat. We still had fun. Saturday night. Homecoming dance at the Civic Center. Shining Star and Reluctant



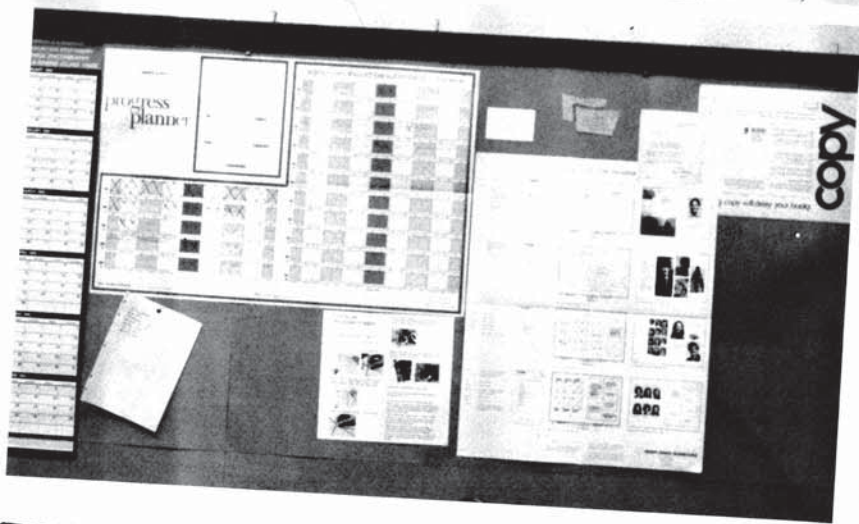
2:40. The final bell rings. School's out! One day down, more to go. Time to move on in other directions. Try out for the play, go to practice. Write that paper. Study for those tests. What about...?



1. Art electives give Dan Smith's talent expression. 2. Mrs. Kinoshita answers a question about the new Bi-Lingual classes. 3. P.U.P.S. program students enjoy working directly with children in the community. 4. Mrs. Garth and E.H.I. students pose before beginning pilot course second semester. 5. Cosmetology students finish homework before leaving for classes in Champaign.



Programs. So many! Which is best? College bound? Career exploration? Vocational prep? Maybe a variety. Or should I be specific? What will I do?



CLUBS



The annual Thanksgiving Dinner, Senate's biggest project this year, was again a success in spite of the snowstorm which raged over Urbana the day before and that early morning. Elderly people and foreign students were the guests of senators and many other student volunteers who had a great time cooking and serving the evening meal. Senate continued to serve the constituency by adding six new clocks to various classrooms, increasing the passing time between periods to six minutes and installing and maintaining a new bulletin board in the lower hall.



1

Senate Serves Again



5

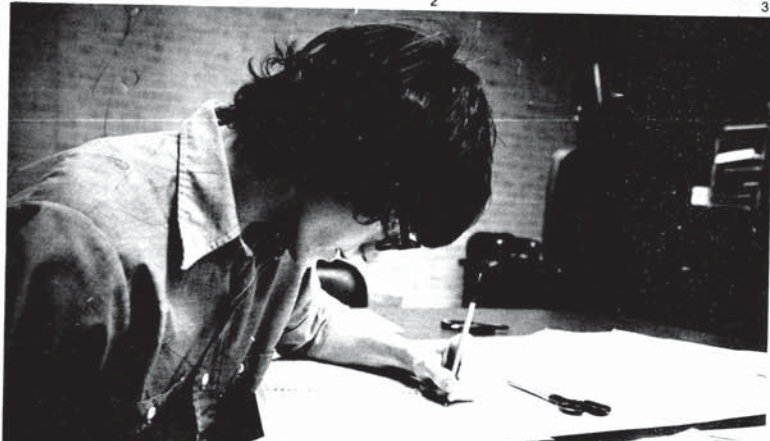
1. Mark Johnson, Amy Flygare and Sandra Romans take a break during the Thanksgiving Dinner. 2. Mr. Lemons M.C.'s entertainment on Turkey Day. 3. Allison Jones delivers coffee. 4. Rob Jerrard takes Committee attendance. 5. Stephanie Ritter takes notes for English class Senate Reports. 6. Maria Benfield dishes out turkey. 7. Cathy Rowan and Barb Ebeling plan projects.



6



2



3



4



1. Jerry Sullivan and Robert Jerrard move in glassware for Thanksgiving Dinner. 2. Karen Bender interviews Mr. Lemons at the Mock Convention. 3. Penny Smith hands out campaign buttons. 4. Senior Citizen arrives for Thanksgiving at the First Methodist Church. 5. Cathy Adams and Cathy Rowan tabulate votes.

**1980
REPUBLICAN NATIONAL
CONVENTION**



Steering Committee. R. Roberts, J. Cooper, K. Allen, C. Dearth, A. Bouslog, D. Dowd. Row 2: D. Morse, M. Prickett, L. Tompkins, A. Steiner, T. Morse. Row 3: K. Kocher, L. Jerrard.

Senators Never Stop



5



Student Senate. C. Hamilton, A. Jones, C. Robinson, L. Tompkins, A. Steiner, L. Taitman, C. Dearth, K. Adams, M. Benfield, S. McPhail. Row 2: J. Walsh, A. Mann, J. Sturgeon, N. Adams, K. Davidson, J. Sullivan, A. Airth-Kindree, L. Jerrard, K. Kocher. Row 3: M. Brooks, D. Dowd, R. McCabe, M. Lord, S. Ritter, K. Bender, J. Cooper, D. Morse, M. Johnson. Row 4: T. Willis, C. Rowan, A. Flygare, A. Bouslog, N. Jackson, S. McCabe, L. Weinberg, T. Boyer. Row 5: Advisor David Lemons, L. Epps, P. Fitzgerald, G. Day, C. Chagnon, J. Morse, B. Ehalin, B. Roberts, J. Stewart, B. Stout, R. Jerrard, S. Ehnere.

W.U.H.S. Hits Friday Air

Returning Director Barbara Griffiths coached the Urbana High Radio Staff for each Friday's school news presentation and for special announcements. Many of the students also assume responsibility for the delivery of the daily announcements. The staff gets solid experience in media presentation and provides a valuable service to the student body.



W.U.H.S. Staff. D. Roessler, C. Rowan, S. Knust, Jones, M. Benfield, Advisor Barbara Griffiths, J. A. Bouslog. Row 2: J. Pell, E. Rannebarger, J. Palmer.



1



2

1. Cathy Rowan and Eric Rannebarger get the sports and local news together. 2. Larry McMillan controls the audio on daily announcements. 3. Anchor Joe Palmer moonlights at Rosemary Awards.



3

Ne
Comm



Speech Team. M. Allen, K. ... mental, P. Harris. Row 2: ...

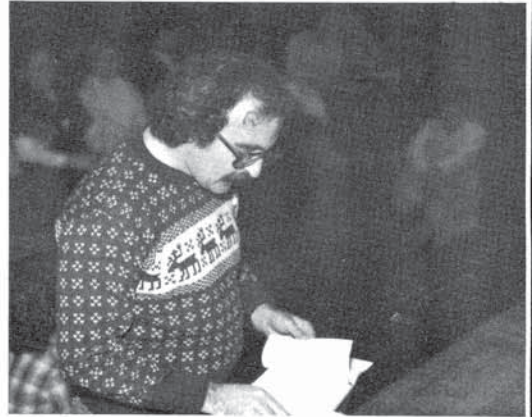


Drama Club. M. ... Pell, Nancy Brown, M. ... Hoffman, P. Harris. ...



Speech Team. M. Airth-Kindree, A. Blumenthal, P. Harris. Row 2: A. Airth-Kindree, A. Reed, R. Rutherford, L. Deutch.

Speakers Act On Cue



Drama Club. K. Otterbacker, A. Blumenthal. Row 2: Advisor Greg Chew, J. Pell, Nancy Baym, M. Whalen, B. Hagele. Row 3: C. Brooks, C. Dickel, L. Hockman, P. Harris, M. Benfield, D. Spahr, J. Schoenberg, H. Secret. Row 4: M. Robinson, S. Bowen, L. McMillan, C. Hayes, R. Rutherford, E. Kessling, H. Lareau, J. Kaufman. Row 5: T. White, J. Morse, S. Ikenberry, L. Pell.



Oklahoma Springs Spring



actors Greg Chew and Jean
they brought a successful
duction of Rogers and Ham-
stein's **Oklahoma** to the
S. stage. Henry Taira (Curly)
Ellen Macomber (Laurie) fi-
took a ride in the surrey and
t care if people said they
in love. Jeff Reedy (Will
er) and Bobby Jo Johnson (a
traveling salesman) vied for
Annie's (Sue Rucker) atten-
with Will capturing her heart.
Rutherford as Jud, Mary
as Gertrude and Andrea
as Aunt Eller completed the
g cast of Urbana's spring

Oklahoma Cast. S. Rucker, B. Reedy, E. Macomber, S. Webb, H. Sechrist. **Row 2:** J. Erickson, S. Anderson, P. Seeds, R. Michael, M. Everly, E. Wicklund, G. Robinson, D. B.J. Johnson, S. Ahart, S. Snider, A. Miles, J. Heath, K. McMillan, M. McGinty. **Row 4:** B. Grove, S. Ikenberry, L. McMillan, L. Deutch, G. Klein, I. Pall, D. Haberman, B. Rutherford, H.

Oklahoma Orchestra. S. Collins, K. Drollinger, K. Hays, S. Brooks, A. Blumenthal, K. Otterbacker. **Row 2:** D. Odenweiller, J. Kaufman, D. Spahr, J. Schoenberg, C. Cohen, E. Kissling. **Row 3:** L. LaBerge, J. Heinzen, A. Harris, M. Rob-
inson, A. Stein, C. Jensen, D. Smith. **Row 4:** M. Colwell, S. Thuney, J. Norwood, J. Bray, M. Pillar, J. Waldoff, D. Mathis.

1. Jill Walthall and Eric Wicklund bust out at June picnic. 2. Laurie ignores Curly's serenade. 3. Laurie, Curly and Aunt Eller admire Oklahoma's beautiful morning. 4. Will tells all about his trip to town.

1. Hideko Secrest and Phil Harris help Steve Ikenberry look for a job in Altamont. 2. Bev Jakobsson and Hector Lareau laugh at old times. 3. Rick Rutherford and Cindy Dickel make plans for dream trips. 4. Maria Benfield gives Rick Rutherford tips on being a smart businessman. 5. Megan McGinty intimidates suitors. 6. Natalie Rebeiz checks with other set crew members on where to put the bed for the next scene.



Look Homeward, Angel Cast and Crew. C. Dickel, A. Miles, R. Shupp, M. McGinty, P. Savane, N. Baum, N. Rebeiz, J. Mack, S. H. Secrest, K. Otterbacher, R. Rutherford, M. Benfield. Row 3: ...

Look Homeward, Angel



The Drama Club, under the direction of Greg Chew presented **Look Homeward, Angel** on December 5, 6, and 7 this year. The play, based on the novel by Thomas Wolfe features the Gant family and centers on their youngest son Eugene. Memorable characters such as Eugene's domineering mother Eliza (Maria Benfield), his alcoholic father (Hector Lareau) and a pretty boarder (Cyndi Dickel) with whom he falls in love all complicate his search for his own world.



B.S.A. picked up momentum this year under President Laurie Epps and Advisor Grace Wingfield. In the fall, the club sponsored a Daisy Mae dance and in the spring promoted a talent pageant, a production of the musical West Side Story. A final fling to Six Flags brought the year to a close. Other dances and bake sales funded the trip and various community service projects.



B.S.A. Officers. Denna Davis, Debbie Mitchell, Sponsor Grace Wingfield, Senior Rep. Kim Hendricks, President Laurie Epps, Treasurer Tracey Willis.

B.S.A. Styles Active Club



1. Tracey Willis talks over club plans. 2. Ms. Wingfield and Laurie Epps work out agenda for an afternoon meeting. 3. Lavonda Dorsey, Angie Thomas, Kim Hendricks and Michael Brooks follow discussion. 4. Students discuss B.S.A. goals.



B.S.A. L. Gilmore, M. Brooks, A. Harrison, V. Nesbitt, D. Davis, L. Dorsey, R. Gilmore. **Row 2:** S. Thomas, K. Anderson, M. Jones, A. Thomas, P. Tyler, T. Dockery. **Row 3:** C. Smith, J. Pryor, E. Johnson, D. Pickens, K. Hendricks, T. Willis, L. Epps, N. Drish.

Vo-Ed Alters Courses



H.E.R.O. M. Shaw, L. Haynes. Row 2: Advisor Karen Robertson, N. Patterson, L. Robinson, T. Klein, J. Booe. Row 3: T. Shaw, T. Cook, C. Jones, J. Wright.

Vocational Education opportunities offer a new direction to school life. Students who choose any of the various courses spend one half of the school day in academic and work related studies and then go off campus for on job experiences. Although not all of the programs offer a club as an activity, several do belong to state and national organizations to promote work interests. Clubs meet after school and work hours to plan fund raising activities and to organize employee-employer recognition.



E. S. Emery, D. Cox, K. Kesterson, Stover, S. McClellan, B. Long. Row

2: S. Haas, M. Whalen, M. Retzolk, Sponsor Kay Dillavou.



I.C.E. D. Gill, J. Burgin, M. Gnaden, T. Harness, P. Ester. Row 2: R. Logan, Sponsor Pat Atchley, C. Weidert, R. Stout. Row 3: R. Jupp, T. Burgin, V. Bohlen, B. Sarver, T. Mathews, J. Cle-vinger, T. Stout. Row 4: C. G...



1. Mrs. Robertson reviews H.E.R.O. plans. 2. Tammy Cook, Joel Wright and Nina Patterson show off Christmas Merri-Belles. 3. Tonya Shaw, Carolyn Jones and Nina Patterson put bulletin board collage together.



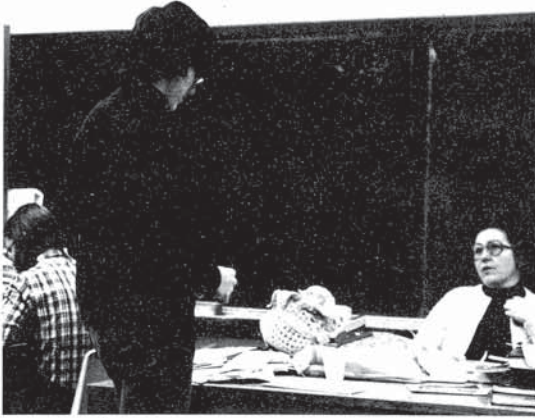
The school newspaper published with greater regularity in the 80-81 school year. Editors Robert and Leigh Jerrard and Managing Editor Peggy Savage held problems to a minimum and Advisor Clare Barkley regularly delivered the paper to Rantoul Press for printing. In addition to regular news and sports and activity news, several features were run in double issues. Among those featured stories were a Pathfinder Club article and a former U.H.S. students currently in Professional Theater. The variety prompted many students to look forward to the Echo which is distributed at no cost. The journalism honorary Quill and Scroll returned to honor staff members who met the criteria.



Echo Staff. H. Secrest, N. Franciscono, K. Otterbacher, A. Blumenthal, R. Roberts. **Row 2:** B. Day, L. Jerrard, P. Savage, S. McPhail. **Row 3:** B. Ebeling, S. Beak, Advisor Clare Barkley. **Row 4:** L. Pell, R. Jerrard, D. Stone.



Echo Voices School News On Schedule



Quill and Scroll. Advisor Clare Barkley, H. Secrest, P. Savage, L. Jerrard, B. Ebeling, D. Stone, R. Jerrard.



1. Editor Robert Jerrard and Mrs. Barkley discuss upcoming issue. 2. Managing Editor Peggy Savage and Reporter Shelly McPhail review old Echo copies.