

Urbana High School — Enrollment 1111

Table of Contents

Editor-in-Chief — Natalie Jackson
 Advisor — Sherry McClellan
 Publisher — Herff Jones
 Volume 72

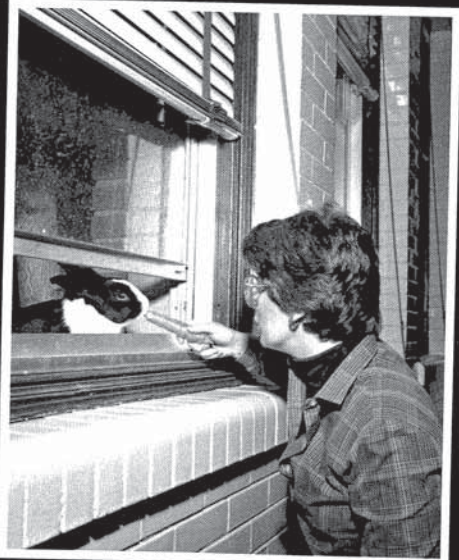
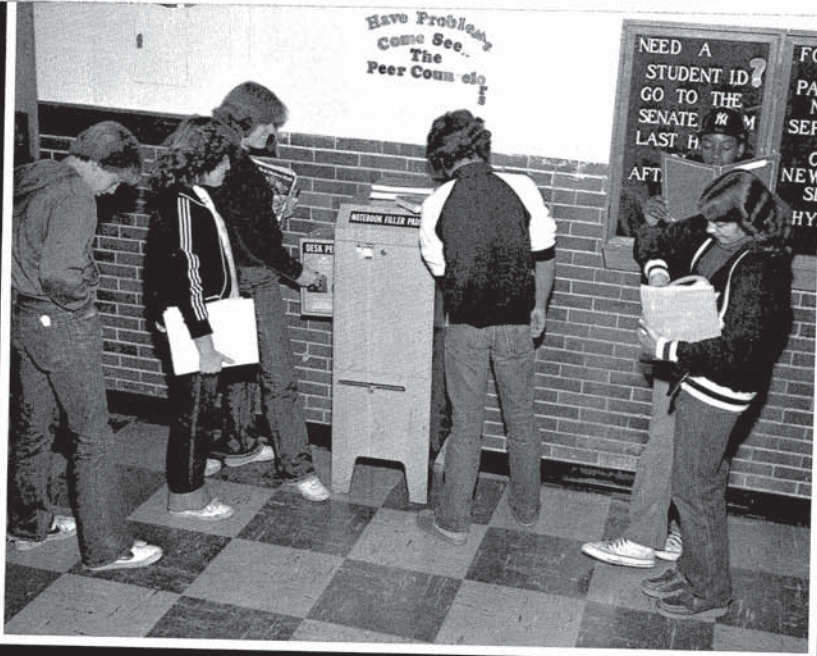
Tiger Pride	1
Activities	22
Athletics	54
Album	86

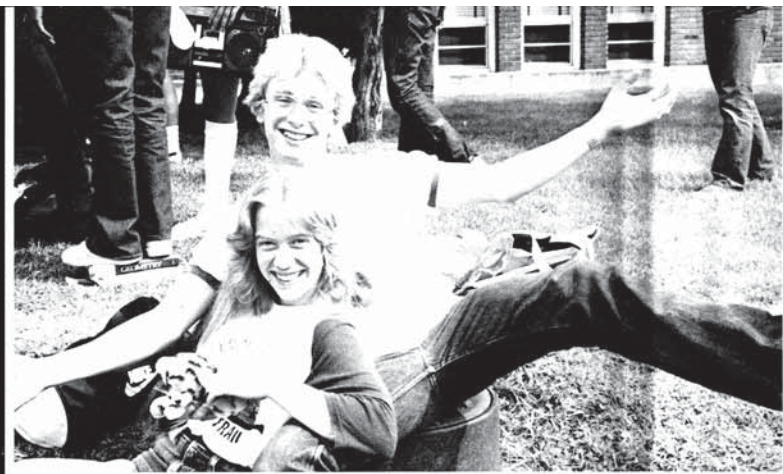
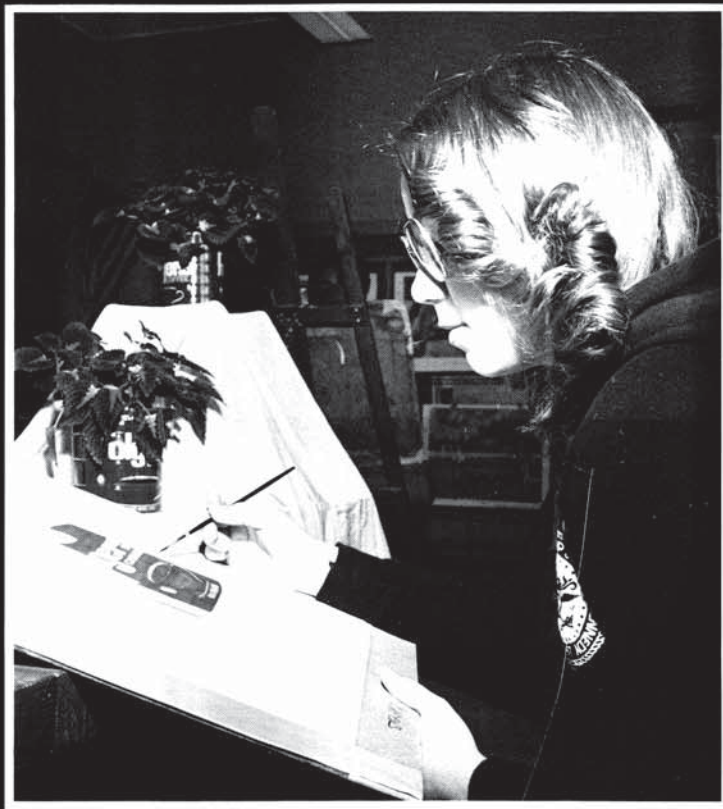


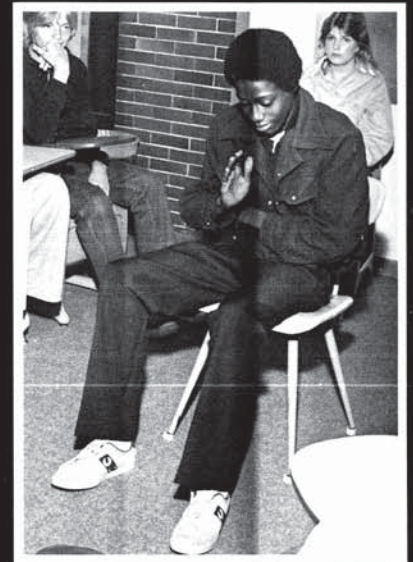
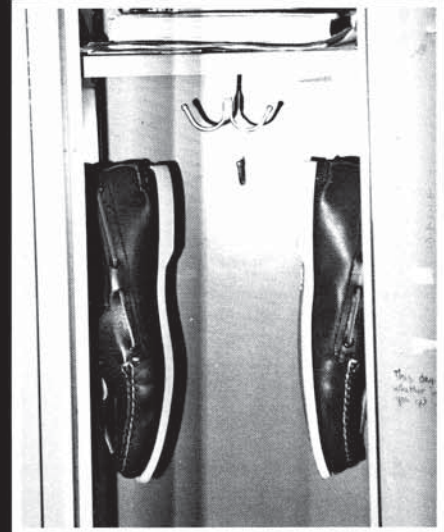
Rosemary 1982

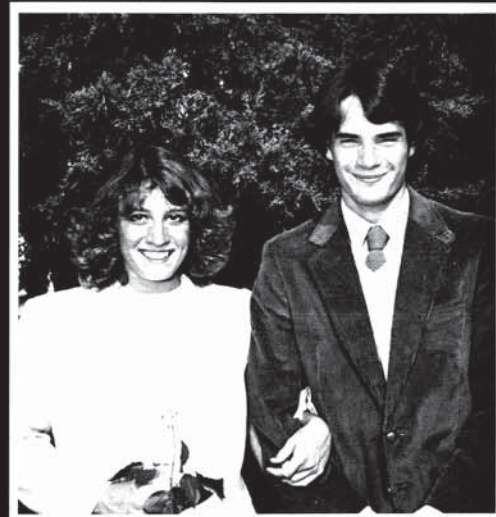
Tiger Pride

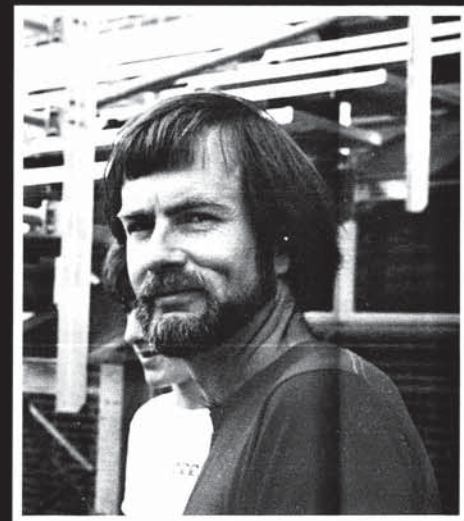
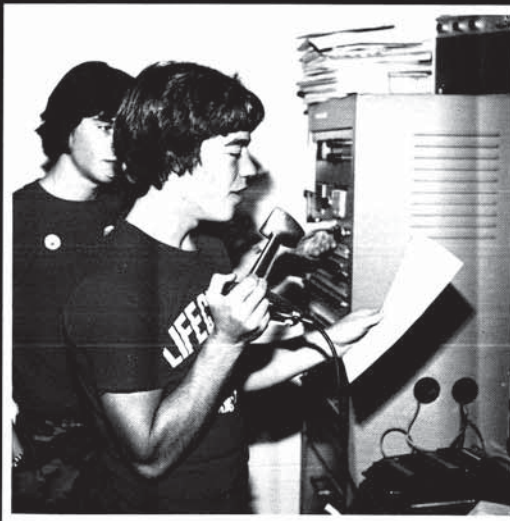
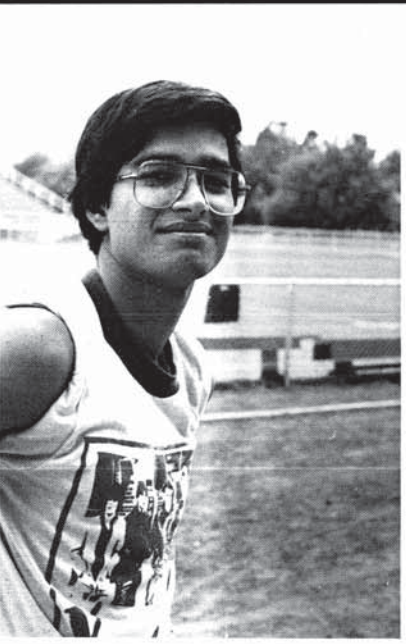
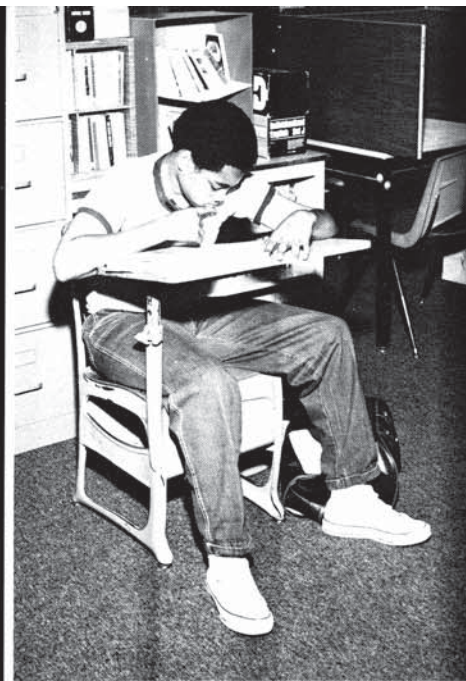
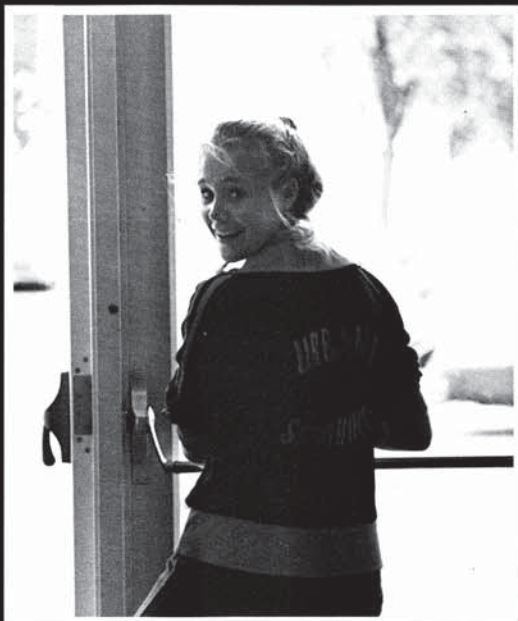
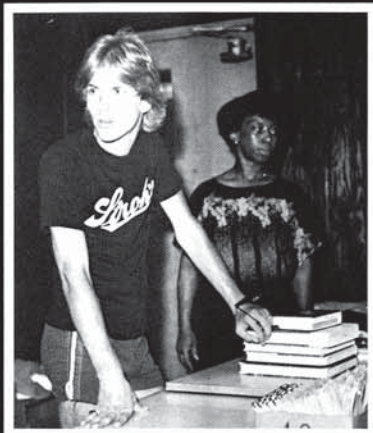


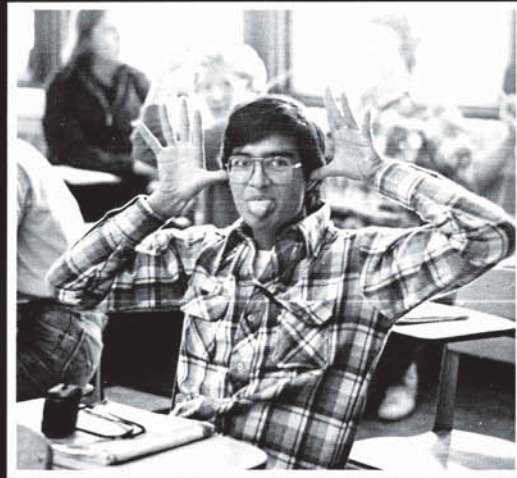
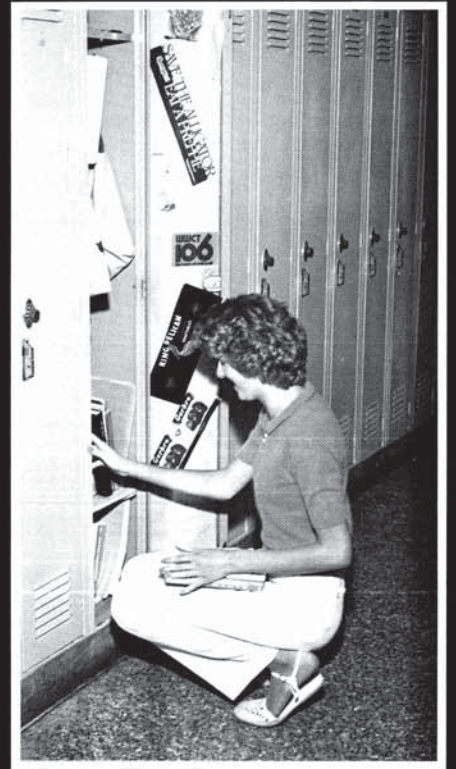
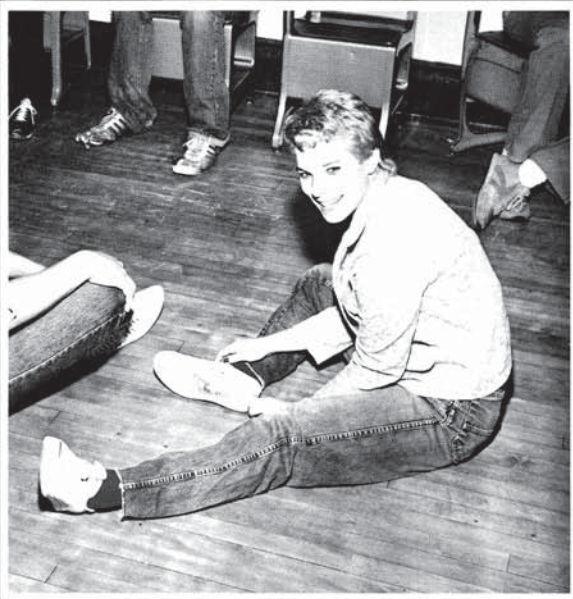


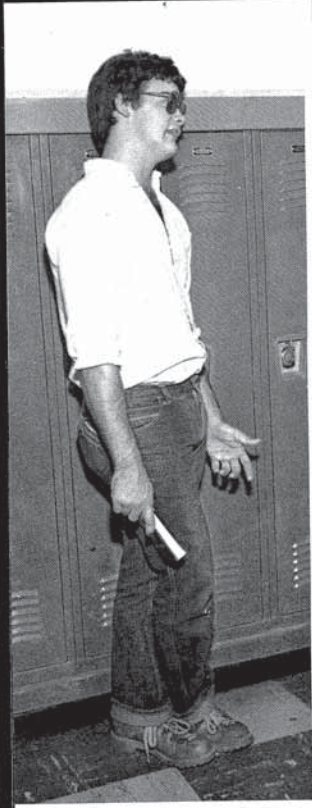


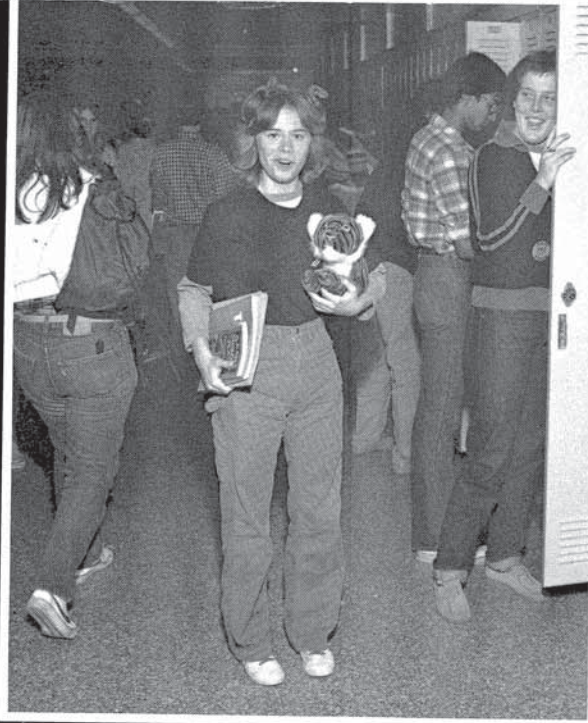


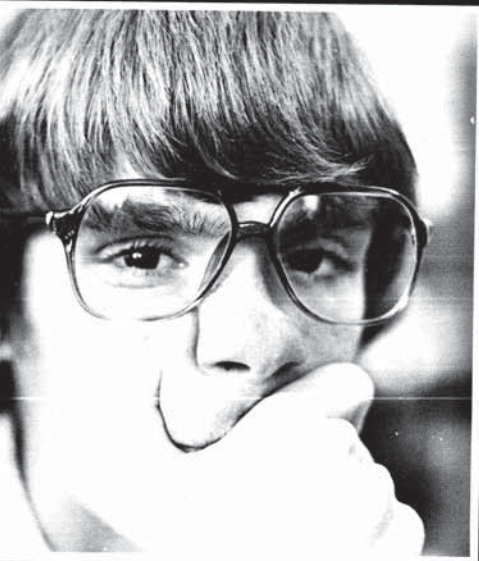












Learning — tiger style



1981
Pathfinders. J. Ogata, T. McColley, B. Jakobson, H. Secrest, C. Wedel. **Row 2:** K.

Snyder, J. Roberts, Advisor Robert Drew, J. Nelson, A. Sampson, D. Smith



E.H.I. J. Wright, A. Wei, K. Allen, T. Jensen, S. Paul, L. Dehaven. **Row 2:** Sponsor Carolyn Garth, A. Ahart, J. Combs, B.

Bode, M. Hoffman, L. Tompkins, C. Naegle, A. Wallace, J. MacDonald, L. Sutherland, S. Kesler.

Tigers tackle traditional programs to complete the 26 credit graduation requirement. Some courses and programs are not so traditional and allow students unusual opportunities to pursue particular interests and needs. Various vocational programs and classes allow students to learn to earn. A House Construction class compliments Industrial Arts Ed. The Executive High School Internship Program, now in its second year, permits some students to explore professional career interests by working for a semester in that field. Pathfinders learn wilderness survival skills and trek West for practical experience. Sea Explorers venture to the Florida Keys for study. PUPS provides students with interest in child development a chance to work with pre-kindergarteners and parents. Medical Careers classes add dimension for other students. A course in theater lighting and one in Life Studies serve others. Cultural differences are bridged in E.S.L. and Youth for Understanding programs. Old or new, offerings are varied and plentiful.



Peer Counselors R. Duffin, D. Toler, P. Blunt, P. Tyler, P. Tyler, S. Blunt.
Seeds. Row 2: J. Hund, C. Strickland. Not Pic-





T. Morgan, D.E.; L. Day, D.E.; Coordinator Patrick Atchley, J. Hawn, D.E.; J. McDade, HERO. Row 2: R. Pittman, D.E.; T. Stewart, D.E.; M. Lowry, D.E.; M.

Keeler, ICE; S. Webb, D.E. Not Pictured: T. Buller, HERO; M. Willis, D.E.; K. Hawn, HERO.



CWT. B. Uden, J. Wease, C. Smith, Coordinator Pat-
Cuppennell, T. Burnett, J. Hill. Not Pictured: S. Adcock,



CWT. R. Wells, R. Medrow, T. McClellan, J. Dufrane, Gamble, R. Zander, T. Somers, S. Curry.
Coordinator Carolyn Garth. Row 2: R. Herrington, J.



CWT. C. Smith, T. Foster, D. McLaughlin, L. Zander, R. Miller, R. Anderson, J. Gill, M. Ronk, J. Owens, K. Diakow, S. Chounard.



Activities

Senate auctions success



Senate's first auction drew large crowds and more money. John Pell paid \$35 to put a pie in Dr. Zeck's face and McCabe, Benfield, Allen and Laberge paid the premium bid of \$67 to have dinner at the Stoia's. The annual Thanksgiving dinner provided students and the community with a bigger than ever festival. Senate greeted students with packets on the first day of school and guided parents through the halls on the night of open house.



Student Senate. B. Berns, L. Cecil, L. Strauss, C. Hayes, C. Hamilton, D. Terry, L. Isley, D. Luster, J. Lee. **Row 2:** J. Sullivan, R. Bosques, A. Steiner, S. Flygare, W. Shaffer, C. McColley, C. Robinson, C. Allen, T. Drish, A. Slichter, S.

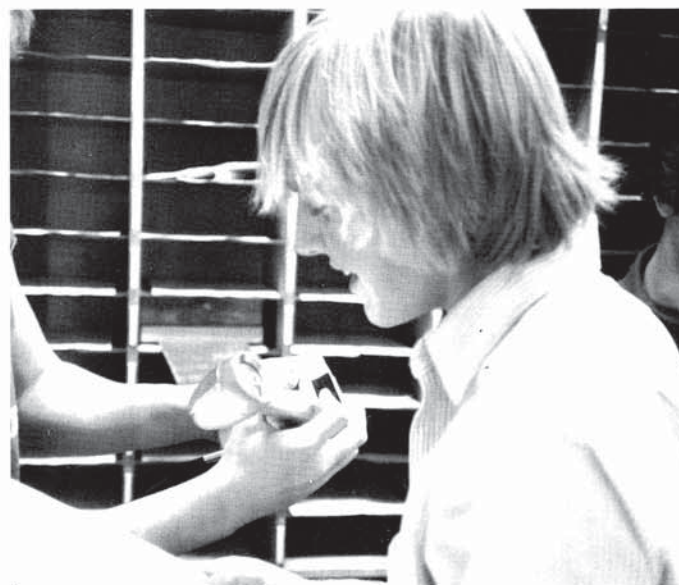
son, D. Roessler, L. Poor, D. Morse. **Row 4:** T. Willis, T. VonDracek, B. Becker, K. Wimpy, B. Nelson, S. Knust, A. Flygare, B. Ebeling, S. McCabe, M. Hoffman, J. Walthall. **Row 5:** Advisor David Lemons, J. Halpin, H. Lareau, G.

Steering Committee. D. Lemons. **Row 2:** T. Boyer, R. Bosquez. **Row 3:** D. Luster, S. McCabe, C. Allen, A. Thies, G. Robinson. **Row 4:** T. VonDracek, C. McColley, H. Lareau, A. Slichter. **Row 5:** M. Benfield, M. Hoffman, J. Halpin.



WUHS broadcasts tiger pride

With Barbara Griffiths as sponsor, WUHS broadcast daily announcements, special notices and a weekly morning show on Fridays. The Friday show varied weekly featuring interviews, weather reports, sports events and the new "Chad Gallephow." Members meet nearly each week and rotate the anchor persons.



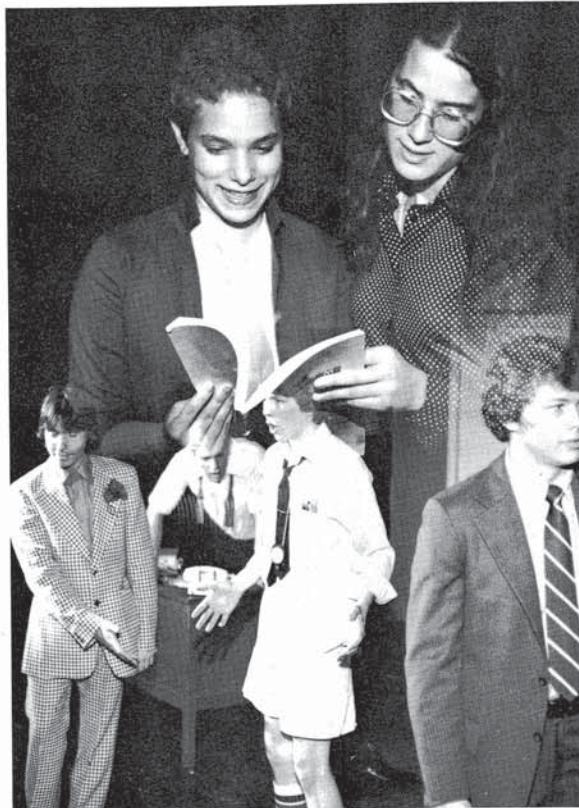
WUHS Staff. C. Nagele, C. Robinson, S. Barbara Griffiths, J. Sullivan, R. Bailey, M. Knust, C. Alan. **Row 2:** S. Batzli, C. Deal, Siemens, C. Bechtel. **Row 3:** Advisor S. Fejes, R. Hoggard.





Pajama Game Cast/Crew. S. Johnston, M. Blakely, R. Sheth, S. Dearth, A. Jones, N. Baym, K. Mills, S. Bowen, L. Knox, L. Strauss, M. AirthKindree. **Row 2:** C. Adams, S. Romans, M. Prickett, J. Becker, C. Dickel, R. Shupp, K. Otterbacher, L. Jeffard, S. Webb, M. Robinson, S. Thuney, S. Hudson, L. Hockman, G. Caton. **Row 3:** Music Director David Saunders, Director Greg Chew, D. Mathes, D. Hunt, M. Wakeland, M. Benfield, J. Sullivan, R. Jerrard, E. Wicklund, M. McGinty, T. White, A. Miles, C. Hayes, M. Lereau, A. Harris, B. Holden, J. Cohen, J. Hill, T. Jeeter. **Row 4:** B. Ebeling, G. Day, D. Alsmeyer, S. Ikenberry, S. Thuney, R. Wilson, R. Rutherford, J. Schoenberg.

P.J. Game's a success



Pajama Game reached sellout proportions for a cast and crew delight. Goeff Day and Maria Benfield, as the foreman of a pajama factory and a female union leader caused problems for everybody when they became romantically involved. Greg Chew from the drama department and Dave Saunders from the music department once again teamed for a hit on April 23, 24, and 25.

nt, M. Wakeland, M. Klund, M. McGinty, T. A. Harris, B. Holden, Ebeling, G. Day, D. Alson, R. Rutherford,



Playboy of the Western World



Cast and Crew. Row 1: R. Hasler, J. Schoenberg, S. Collings, M. McGinty, S. Webb, M. Robinson, C. Hayes, M. Jeter, T. Hulin, A. Twaranovica. Row 2: A. Everett, G. Loeb, S. Unger, W. Wirt, D. Spahr, C. Dickel, S. Knust, S. Thuney, D. Seif, B. Kramer. Row 3: Director Greg Chew, R. Offner, D. Bidwell, G. Silver, V. Mendoza, S. Govindjee, H. Lareau, C. Waaler, B. Holden.





World



Director Greg Chew, R.
 Producer S. Govindjee, H.



This year's fall play **Playboy of the Western World**, presented by the Drama Club under direction of Greg Chew opened for a November 12, 13, 14, run. This Irish comedy written by J.M. Synge tested a gallant cast at using an Irish brogue. The action feature new talent mixed with some old. Christy Mahon (Glenn Silver), after killing his father (Randy Offner), finds refuge in a small country tavern where he falls in love with Pegeen (Gwen Loeb). This romance doesn't last long because a bump on the head never keeps father down long.



Speech is the thing

The drama club traveled to the Illinois Theater Festival in January. They viewed other high school shows and attended workshops. The club sold candy and worked booths at the Tiger night. The speech team grew this year as they traveled to various contests. Eden Bodnar went to Lincoln for State Sectionals in Verse Reading. The new team planned a novice tournament for late spring.



Speech. K. Jessop, P. Keller, E. Bodnar, A. Lombardi, L. Keller, A. Airth-Kindree, T. Hulen, A. Harris, H. Lareau, C. Gold. **Row 2:** J. Lee, S. Herscheler, P. Kirby, C. Bechtel, M. Siemans, Coach Barbara Griffith. **Row 3:** Asst. Coach S. Davis.



Drama Club. M. Robir Fleischer, G. Silver,

e thing



v. Harris, H. Lareau, C.

Drama Club. M. Robinson, C. Dickel. Row 2: A. Everett, C. M. Dickenson, D. Bidwell, M. McGinty, S. Under, V. Mendoza, C. Waaler, Mponsor Greg Chew.