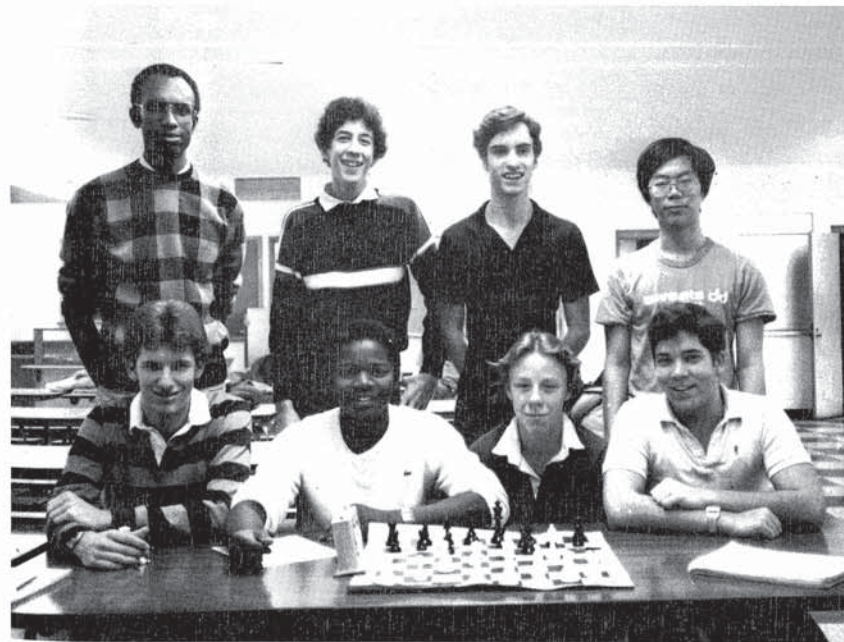
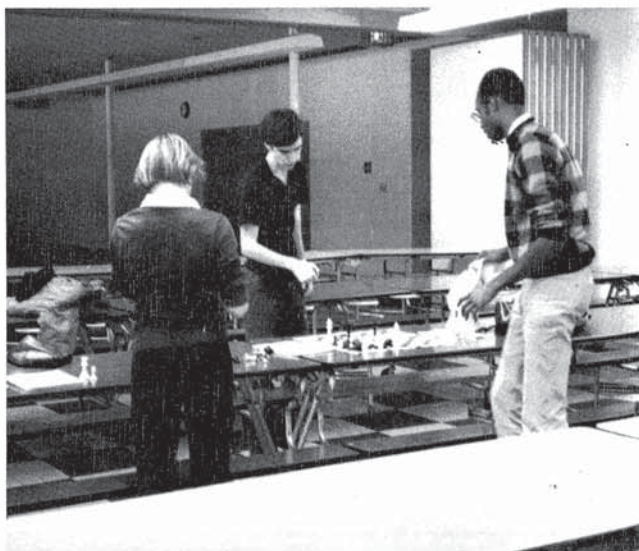


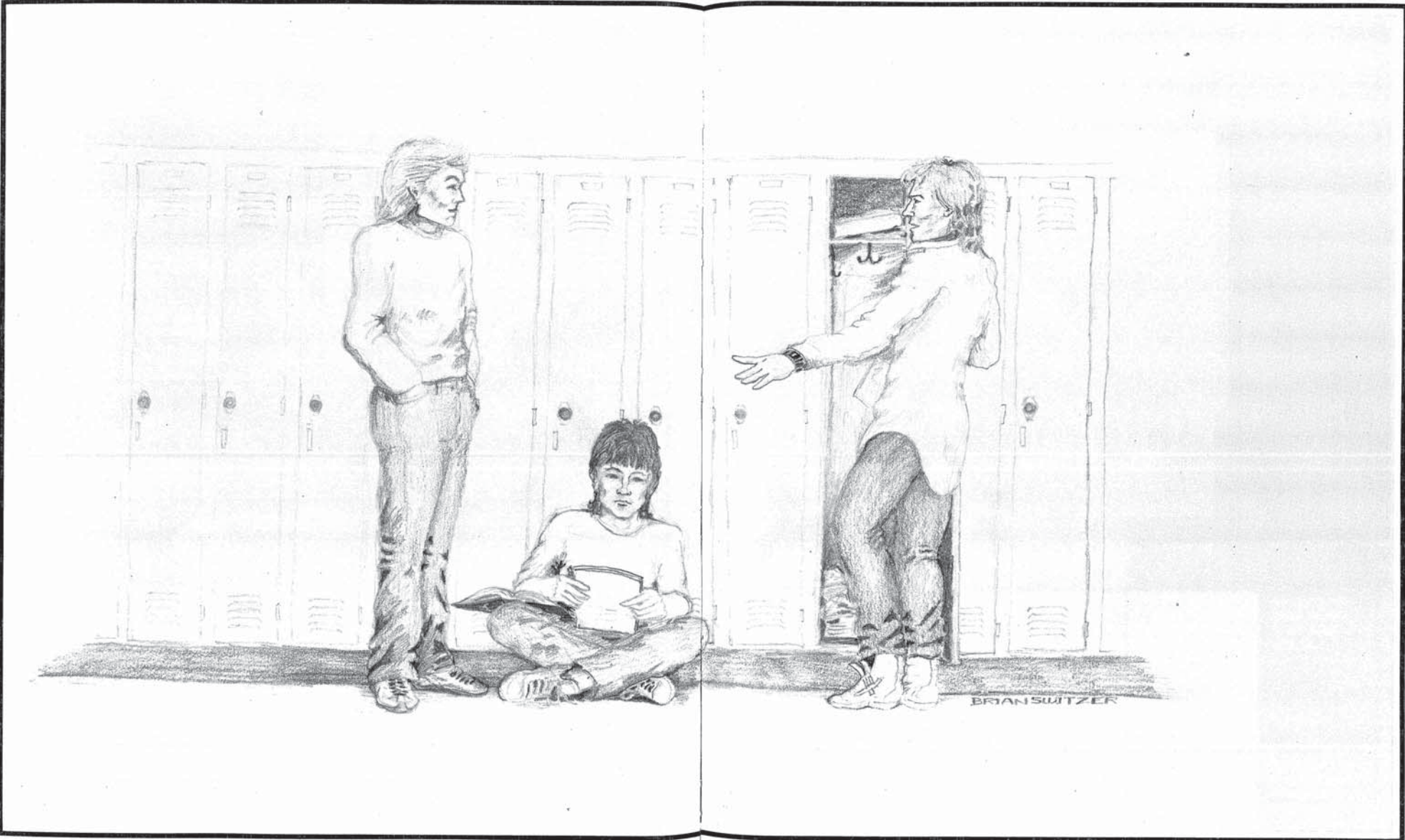
Team Checks Competition



Urbana's chess team lost only one match and finished the season as champions of the Eastern Illinois Conference Chess League. Roger Blakley, defending State Champion, continued his domination of opponents.



CHESS TEAM. I. Hoelt. T. Jones. P. Hoops. D. Karasick. Coach Terry Hutson. K. Luthede. R. Blakley. P. Paik



People

Seniors Weigh In At The Top



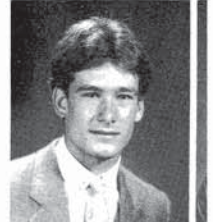
SENIOR OFFICERS. J. Marsh, Senate Rep.; T. Van Meter, lan, Treas.; L. Barry, Publ. Chrmn. G. Jakobsson, Senate Rep.; Pres. ROW 2: C. Tarman, Sec'y; K. Fossum, V. Pres.; E. White, T. Taylor V. Pres. Not Pictured.



Nisha Aggarwal
Andy Aldeen
Bahjat Alreish
Ed Allen



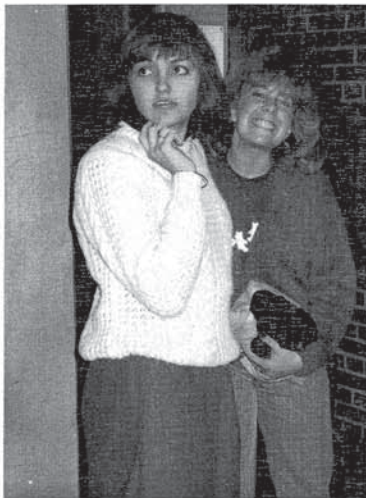
Todd Akers
Antoni Ammons
Misty Anderson
Juan Arbona



At The Top



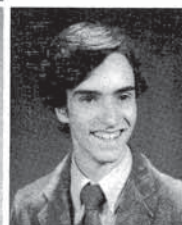
St. Chrmn. G. Jakobsson, Senate Rep.; Pictured.



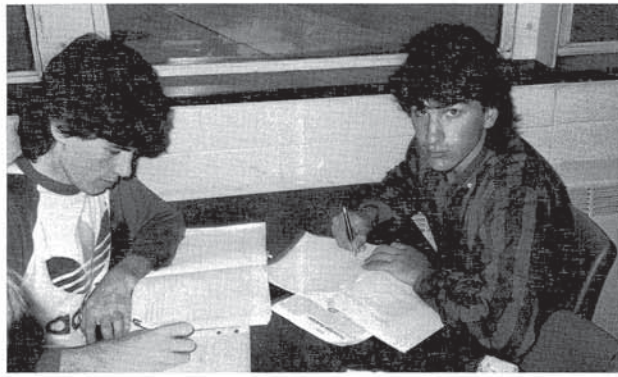
Dennis Atwood
Cordelia Baron
Charles Barr



Leslie Barry
Thomas Benestad
George Bethencourt



Curtis Birt
Craig Blackmon
Jimmie Blakely
Roger Blakley



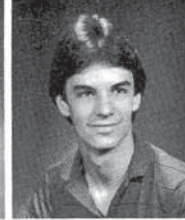
Stokely Boast
Troy Brand
Elaine Brazle
Eric Broga



Michelle Brown
Pam Brownfield
Jeff Bryant
Van Bui

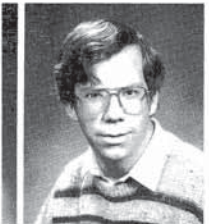


Amy Burdge
Jill Burdge
Chip Carlton
Tonya Carpenter



Tony Carswell
Cassie Carter
Elaine Carter
Debbie Chounard





Pete Cohen
Chuck Cook
Yvette Cooper
Lisa Costello



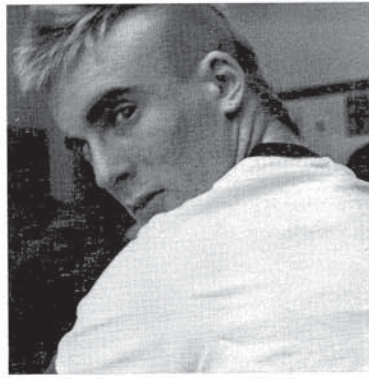
Jenny Cowger
Stephanie Crain
George Crisman
Tracy Crozier



Rebecca Crummey
Rhonda Cunningham
Manuela Dalton
Sigrid Danielson



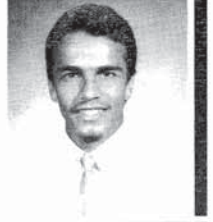
Vicki Davis
Richard Decker
Diana Delheimer
Johanna Denzin



Tammy Dixon
Kim Dodd
Dennis Donaldson
Monica Donaldson



Brian Ducey
Reese T. Duffin
Lenee Edwards
Rodney Egelston



Martha Exton
Steve Fisher
Derek Flood
Buddy Floyd



Amy Forrest
Kristin Fossum
Kurt Frantz
Debbie Freese



MANIFESTO 2010

W
C



Chris Galbreath
Tije Gaylord
Darren Gerriets
Tracy Gilmer



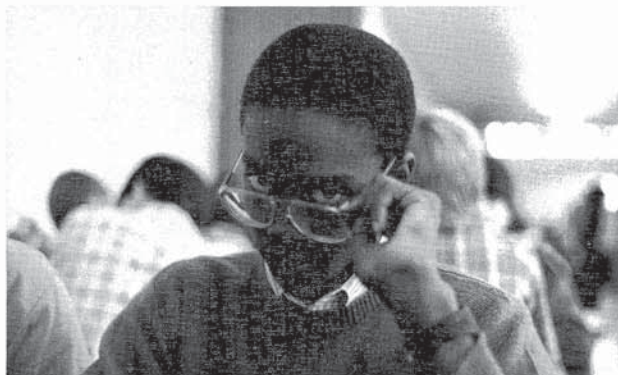
Tito Gomez
Lisa Gottheil
Natalie Grindley
Christy Hammer



Jeff Hampton
Bart Hedgcock
Kevin Hendricks
Marcia Hendricks



Shelley Hendrickson
Jim Herman
Rick Heuer
Chris Hoffman



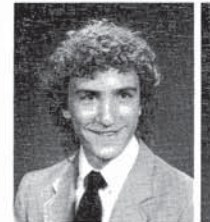
Melinda Hoggatt
Rachel Hopen
Tammy Hubert
Andrew Hulin



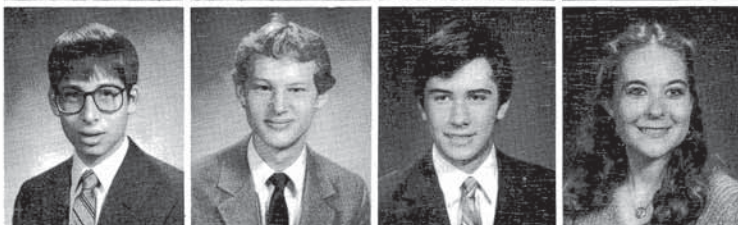
Lisa Hummel
Bryan Johnson
Dawn Johnson
Desiree Johnson



Barb Jones
Tyrone Jones
Wendy Jones
Jan Joyce



Jonathan Kagle
Andy Kaufmann
Deren Kellogg
Michelle Kemp





Alissia King
Angie King
Don King
Lori Kingery



Becky Kirtley
Richard Klein
Rod Kneller
Keith Kouzmanoff



Allen LaBerteaux
Dawn LaFountain
Mara Langan
Michele Larreur



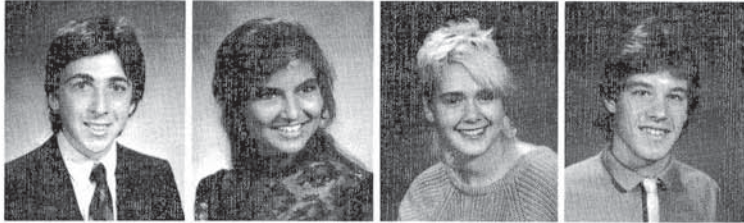
Tharla Lawhead
Antoine LeSure
Vada Lewis
Michele Likens



Mike Linn
Erica Logan
Jeff Lovett
Hannon Maase



Robert MacDonald
Indira Macedo
Katie Maehr
Mark Mammen



Sharmina Manandhar
Alecja Mann
John Marsh
Tammy Masters



Missy Mathes
Marilyn May
Tammy McCoy
Christopher McMahon



Penny Miller
Tina Montague
Jeffrey Morris
Sarah Morrison



Denise Mullins
Cheryl Mullvain
Kellie Murphy
Timothy Murtha



Chad Musgrove
Michael Nagele
Julie Nelson
Ha Hoang Nguyen

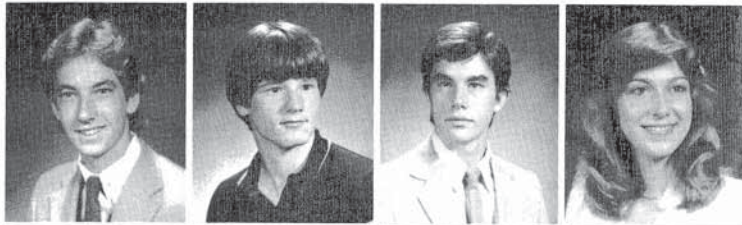


Hieu Nguyen
Paul Norton
Sandy Oehmke
Mary O'Malley





Michael Osmond
Timothy Orr
Timothy Parke
Cherie Parsons



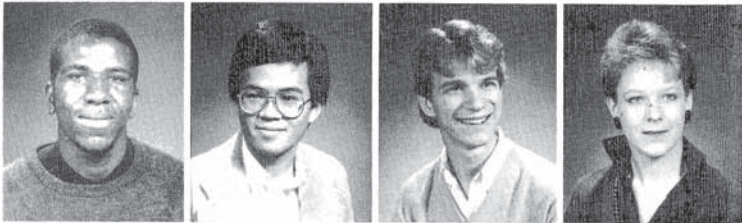
Dianna Reidy
Gary Reiss
Chuck Reynolds
Richard Reynolds

Theresa Parsons
Diane Pecknold
Desiree Perkins
Greg Peters



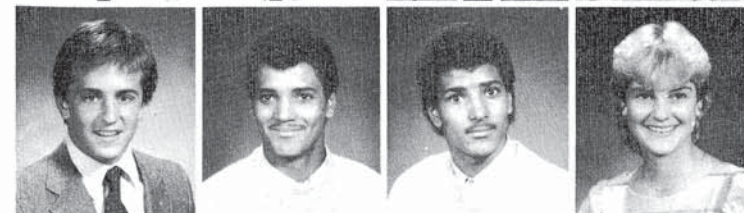
Valerie Ribley
Brad Richardson
Ben Rinehart
Andrea Ritter

Ray Pettigrew
Dung Phan
Randy Phillips
Kristin Pandy

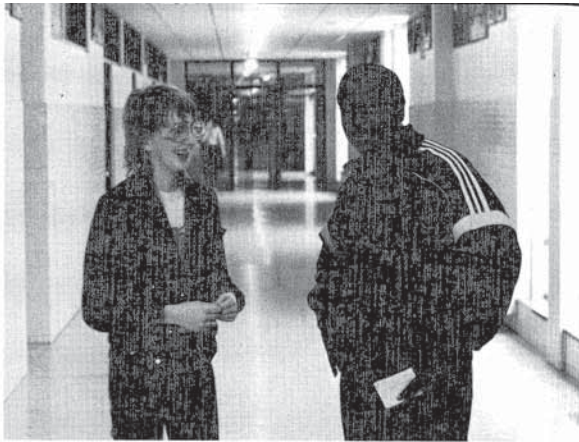


Charles Roberts
Michael Roberts
Ronald Roberts
Lee Robinson

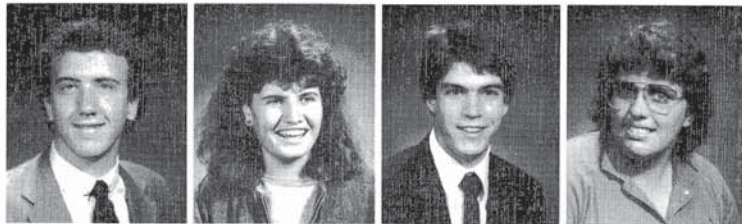
Leesa Pope
Navara Prendergast
Trudy Price
Russell Pardy



Robert Robinson
Tim Robinson
Timothy Robinson
Robin Ross



David Roy
Rita Saab
Aaron Salamon
Brenda Sammarco



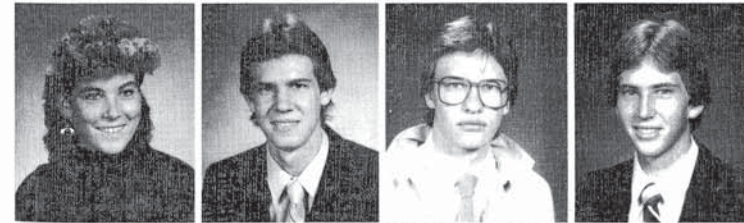
Jeff Simpson
Cheryl Smith
William Smith
Becky Southwood

Alpay Sarabi
Adam Schmitt
Kurt Schultz
Kathy Scott



Sherry Splittstoesser
Shawna Steiner
Denise Stevens
Robin Stigers

Tracy Scroggins
Kimberly Seeds
Russell Shaffer
Chip Shaw



Heather Stoner
Darin Strack
Thomas Stukas
Brian Swearingen

Todd Shelmadine
Trent Short
Marcella Silva
Karyn Simkins



Brian Switzer
Cynthia Tarman
Susan Tatman
Stephanie Tatum



Candie Taylor
Chandra Taylor
Timothy Taylor
Darryl Terry



Renee Thatch
Pam Thomas
Yvonne Thomas
Tammy Tiffin



Ashok Tikku
Mary Tjarks
Nicki Toler
Ted Toombs



Tim Unzicker
Tracey VanMeter
Luke Waaler
Marvin Walker



David Weaver
Erica Whelan
Charles White
Con-Sonja Whiteside



Michelle Whitfield
Jeffrey Wible
Robert Wiegand
Carlos Williams



Cynthia Williams
David Williams
Michael Williams
Ellis Winningham



Cathy Wright
Celeste Yasunaga
Helen Young
Amy Zernich





VOLLEYBALL BONANZA SEX-
WAXERS. D. Gerriets, B. Hedgcock, D. Donaldson, A. Aldeen, B. Robinson, E. Allen, B. Rinehart, K. Frantz.



GIRLS-BOYS STATE. D. Donaldson, M. Hendricks. ROW 2: T. VanMeter, E. Whelan.



DAR-SAR AWARD. T. Short, T. VanMeter.



NATIONAL HONOR SOCIETY. R. Hopen, D. Strack, J. Nelson, S. Splittstoesser, C. Baron, E. Brazle, S. Hendrickson, C. McMahon, T. Unzicker, N. Prendergast, T. VanMeter. ROW 2: N. Aggarwal, B. Switzer, J. Kagle, A. Salamon, A. Tikko, S. Boast, D. Weaver, K. Fossum, B. Wiegand. ROW 3: T. Parke, B.

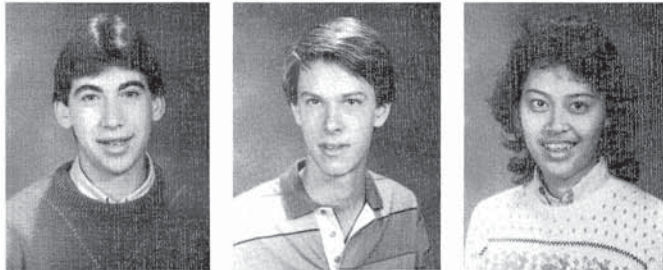
MacDonald, L. Kingery. ROW 4: I. Macedo, R. Crumme, B. Kirtley, H. Young, D. Donaldson, J. Cowger, C. Smith, L. Barry, V. Ribley, H. Nugyen, A. Kaufmann, D. Gerriets, T. Short.



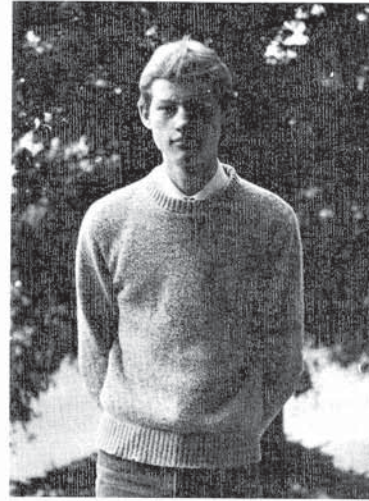
NATIONAL MERIT SCHOLARS. B. Switzer, S. Splittstoesser. ROW 2: C. McMahon, B. Wiegand.

A Pride of Honors

Honors Bring Full Measure



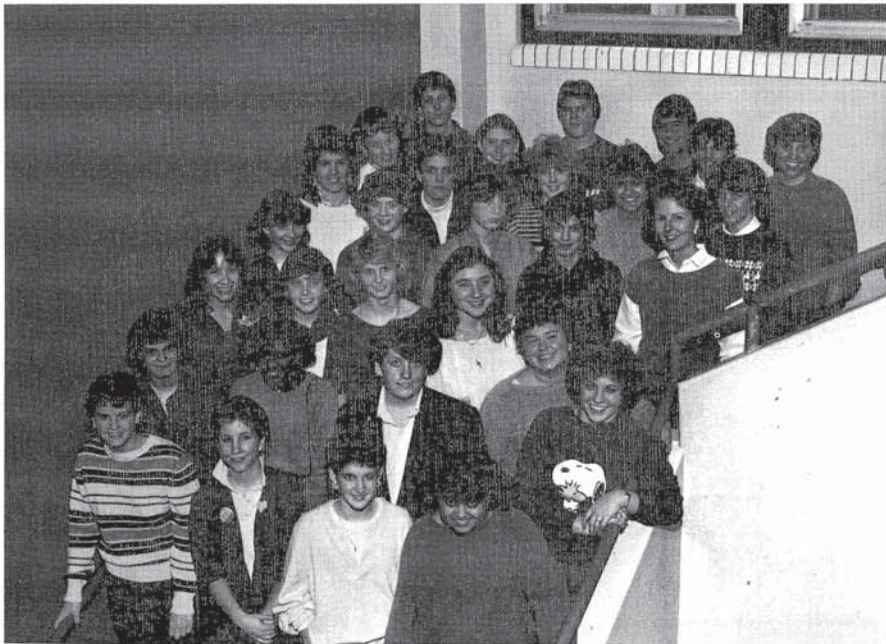
All State Band First Chair, Paul Merkelo; All State Orchestra First Chair, Brian Kay, All State Orchestra, Meira Arballi.



Bausche and Lomb Science Award — Andy Kaufmann



Marian Seward Rhetoric Award — Bob MacDonald



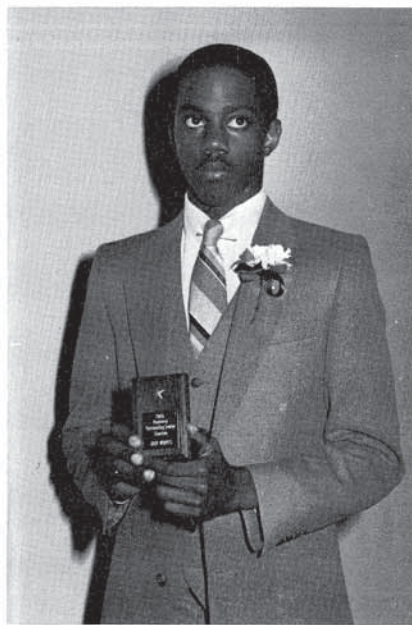
SPANISH NATIONAL HONOR SOCIETY. P. Lard, A. Everette, S. Paine, P. Purkhostrow. ROW 2: D. Haegele, T. Carter, S. Craft, K. Johnson. ROW 3: J. Unger, S. Cogdal, W. Loschen, L. DeBlasio, Sponsor Cindy Cracraft-McKinney.

5: D. Hamilton, T. Maase, J. Chapman, C. Renfrew, S. Gladding. ROW 6: G. Fryer, S. Spittscoesser, D. Swanson, A. Newhouse. ROW 7: A. Aldeen, M. Dowd, D. Kellogg.



SCHOLASTIC ART AWARDS. S. Bodnar, K. Maehr, S. Danielson. ROW 2: T. Shelmadine, B. Switzer, C. Young.

Each year the senior class selects five members of their graduating class to honor as outstanding. The five students honored this year at the February 8 basketball game were in clockwise position: Outstanding Senior Tracey VanMeter and Nominees Alpay Sarabi, Bob MacDonald, Jeff Morris and Trent Short. These seniors were valued as students who contributed their skills in academic areas and leadership to U.H.S.



Seniors Honor Seniors

Now, That's Decent!

Most Cheerful
Most Likely to Succeed
Mot Intellectual
Most Dependable
Most Stylish
Most Huggable
Best Personality

Best Looking
Best Athlete
Best Sense of Humor
Biggest Mouth
Craziest
Boldest
Sweetest
Spiciest
Happiest Laugh

Richard Klein/Susie Tatman
David Weaver/Tracey VanMeter
Bob Wiegand/Sherry Splitstoesser
Brad Richardson/Tracey VanMeter
Kevin Hendricks/ Stephanie Tatum
Van Bui/Brad Richardson

Darryl Terry/Trent Short/John Marsh/Alpay Sarabi/
Indira Macedo/Shawna Steiner
Bob Robinson/Stephanie Tatum
Eddie Allen/Tracey VanMeter
Navara Prendergast/Andy Aldeen
Ike Johnson/Barb Jones
Mark Mammen/Tracey VanMeter
Stephanie Crain/Brian Ducey
Bob Robinson/Indira Macedo
Missy Mathes/Dennis Campbell
Dennis Donaldson/Missy Mathes

Perfect Hair Tony Carswell/Indira Macedo
Teeth Brian Ducey/Theresa Parsons
Smile Eddie Allen
Celeste Yasunaga/Shawna Steiner
Legs Kurt Frantz
Cheryl Smith
Lips Ike Johnson/Kim Dodd
Eyes Carlos Williams/Helen Young/
Tracey VanMeter/Trent Short/
Jeff Morris/Bob MacDonald

Adequate ...
Movie Purple Rain
Movie Actor Prince
Movie Actress Meryl Streep
T.V. Show The Cosby Show
T.V. Actor Bill Cosby
T.V. Actress Joan Collins
Comedian Eddie Murphy
Comedienne Joan Rivers
Musical Group U2
Male Singer Prince
Female Singer Pat Benatar
In-Town Hangout Campus



SENIOR ACTIVITIES

AGGARWAL, NISHA — "Waterbed,"
"eeioouu" uu," Jets Team 3, Math Team 1, Nat.
Honor Soc. 3,4.

ALDEEN, ANDREW SERGIO — "Stud,"
"Bean," "Beaner," "Serg," Baseball 2, Football 2,
Swimming 1,2,3,4, Track 1,2, Chairman-Publicity,
PkInd. Bwl. Team 4, SAR 4. U-Club 3,4, To
Bad For Bart Club 1,2,3,4.

ALLEN, EDWARD MICHAEL — "Ed," "De,"
Football 1,2,3,4, Swimming 1,2,3,4, Nat. Honor
Soc. 3, U-Club 3,4, To Bad For Bart Club 1,2,3,4.

BARON, CORDELIA ELLEN — "Cee," Transferred
From West Valley High School, Fairbanks, AK. Dec. 81. Nat. Honor Soc. 3,4, ECHO
2,3, Community Services 3,4, Facilities 2, Parliamentarian,
Sophomore President, Make-up, set, painting, publicity,
stage 1,2,3,4, Plays "Sweet Charity," "Dark of the Moon,"
"Torch Bearers," "Once Upon A Mattress," "A History of
American Film," "No No Nanette," "The Royal Family,"
"Young Authors 2,3,4, Everyman 3, Glass Menagerie 3,
Speech Team 2,3, WUHS 2,3.

BARRY, LESLIE — Basketball 1, Softball 1,2,
Volleyball 2, Jets Team 2,3, Nat. Honor Soc. 3,4,
HOBY Ambassador 2, French Club 1,2, Junior Class
Officer-Secretary, Publ. Chrmn. 3, Exchange Student 3,
Terrapin 3,4.

BLAKELY, JIMMIE L. — J.R., Football 1,
Track 3, Principal's Scholars 1.

COOK, CHARLES ROBERT — "Chuck,"
"Dog," Hound dog," Golf 1,2,3,4, Tennis 3,4,
Student Welfare/Facilities 4, Representative 4,
Explorers 2,3,4.

COOPER, YVETTE MARIE — "Vet," Delta Sigma
Theta Sorority 1, MIA 2,3,4, Upward Bound 1,2,3,4,
Principal's Scholars 2,3,4, Tigerettes 3.

COWGER, JENNIFER LYNN — "Jenny,"
"Jenn," HeBeJeBe", Cross Country 1,2,3, Track 2,
Nat. Honor Soc. 3,4, (Board Member) Band 1,2,3,
Band Ensemble 1,2,3, Band Soloist 1,2,3,
Orchestra 1,2,3, Explorers 3,4, Peer Counselors 4.

CRAIN, STEPHANIE TERESA — "Reckless,"
Office Help 1, Peer Counselor 4, PUPS 4, Tiger-

ettes 4, Wrestlettes 1.

CRUMMEY, REBECCA JO — "Becca,"
"Becky," "EEK," "HeBeJeBe," Nat. Honor Soc.
3,4, Special Effects — "Dark of the Moon" 2,
Lighting 2, Band 1,2,3,4, Band Ensemble 1,3,4,
Band Soloist 2,3,4, Orchestra 1, Explorers 3,4.

DAVIS, DEREK ANTHONY — Football 1,2,3,
Track 1, Wrestling 1.

DIXON, TAMARA LYNN — "Tammy,"
"Tamro" "Tam," Office Help 3, PUPS 3,4.

DONALDSON, DENNIS KEITH — "Itty Bitty,"
"B.F.," "Bucket," "Shepard," Cross Country 3,4,
Football 2, Track 1,2,3, Nat. Honor Soc. 3,4,
Principal's Scholars 4, Boys State 4.

DODD, KIMBERLY A. — "Kim," Publicity
Chairman 1, "Once Upon A Mattress" 1.

DUCEY, BRIAN THOMAS — "Duce," "Duce-
cester," "Demolition Duce," Baseball 2,3,4,
Football 1,2,3,4, Key Club 3,4, Office Help 4,
Peer Counselors 4, U-Club 2,3,4.

EXTON, MARTHA M. — Rosemary 3,4, Band
1, Peer Counselor 4, Speech Team 3,4.

FORREST, AMY R. — "Aim," Cross Country
2,3,4, Track 1,2, Volleyball 1, Activities Chair-
man 3, Representative 3,4, Secretary 1, Publicity
Chairman 2, Costume 3, "Once Upon A Mat-
tress" 3, Madrigals 3,4, Attendant 4, Speech
Team 4.

FOSSUM, KRISTIN ANN — Volleyball 1,2,3,4,
Jets 3, Nat. Honor Soc. 3,4, Vice-President 4,
Orchestra 1,2.

FRANTZ, KURT JAMES — "Truk," "Drill,"
"Frazier," "Spider," Basketball 1,2,3, Football
1,2,3,4, Track 1,2,3, U-Club 3,4, WUHS 3, To Bad
For Bart Club 1,2,3,4.

FRYER, JAMES — "Jim"

GALBREATH, CHRIS COLLIN — "Pump-
kin," Football 1,2.

GAYLORD, DON TIEJE — "Tieje," "Gillerd,"
Home Construction 4.

GERRIETTS, DARREN BRETT — Baseball
2,3,4, Basketball 1,2,3,4, Nat. Honor Soc. 3,4,
Track 1, U-Club 2,3,4, To Bad For Bart Club
1,2,3,4.

GILMER, TRACY DAWN — Choral Ensemble
1, MIA 2,3,4, Medical Assistant 4, Peer Counselor
4, Principal Scholars 3,4.

HAMPTON, JEFFREY L. — "Jeff," American
League Baseball 3,4.

HEDGCOCK, BART K. — "Bath," "Hrethel,"
"Killer B," "Flash," "Black Bart," "Bert," "Bar-
tums," Football 1,2,3,4-Captain, Swimming
1,2,3,4, Capt. 3, Mr. Zogs Sex Waxers Volleyball
Bonanza Winners 3,4, Band 2, U-Club 2,3,4,
TBFTBS 1,2,3,4.

HENDRICKS, MARCIA LOUISE — "Mar-
seea," Rosemary 3,4, Girls State 4.

HENDRICKSON, SHELLEY ANN — "Gig-
gles," "EEIOOUU!," "Shorty," Nat. Honor Soc.
3,4, French Club 1,2, Explorers 3.

HOFFMAN, CHRIS IAN — "Hoffman,"
"Huey," Art Club 4, Band 1,2.

HOGGATT, MELINDA JO — "Mel," "Pink,"
"Melinda Sue," "Mellie Jo," Cross Country 4,
Volleyball-Scorekeeper 1, Rosemary 1, Repre-
sentative 3,4, Track 4.

LANGAN, MARA ELIZABETH — Explorers
1, Speech Team 2 Co-Captain, WUHS 3.

LINN, MICHAEL C. — "Freddie Linn," Foot-
ball 1,2,3,4, Swimming 1,3, Jets 3,4, To Bad For
Bart Club 1,2,3,4.

MacDONALD, ROBERT LAWRENCE —
"Bob," Cross Country 2,3,4 (MVR) Track 1,2,3,
Math Team 1,2, Nat. Honor Soc. 3,4 (President);
Outstanding Senior Nominee.

MACEDO, INDIRA THERESE — "Deera,"
Transferred from Rosary High School St. Louis,
MO August 1982, Cross Country 1, Track 1,
Soccer 1,3,4, Nat. Honor Soc. 3,4, Rosemary,
Senior Assistant Editor 4, Crews 1, Lighting 1,
Swing Choir 2, Attendant 3,4.

MAMMEN, MARK CRESTON — "Jammin," "George," "Wayne," "Kram," "Mean Bro," "Rocky," Football 1,2,3,4, Wrestling 1,2,3,4, Junior Athlete, Choral Ensemble 1, State Wrestler 3,4, U-Club 1,2,3,4, WUHS 3,4.

MANN, ALECIA LYNN — "Lish," Rosemary 1, Choral Ensemble 1, FSA 3, Wrestlettes 1,2,3,4, Captain 3,4.

MASTERS, TAMMY LYNN — "Goofy."

MATHES, MELISSA ANN — "Missy," Rosemary 4, Officer 4, Band 1,2,3,4, Band Ensemble 1,2, Flag Corps 2,3,4, Peer Counselors 4, Wrestlettes 1,2,3,4, Captain 3,4, "MVL" 2,3,4.

MAY, MARILYN S. — "Merlin," Rosemary 4, Band 1, FSA 4 (Secretary), Office Aid 4.

MCCOY, TAMMY RENAE — "Sweepie," Basketball 1, CWT 4, Office Help 4, Peer Counselors 4.

MCGRUFF, ROVER FIDO — "Spike," "Killer," "Spot," Football 1,2,3,4, Swimming 1,2,3,4, Wrestling 3,4, "The Royal Family" CWT 2,3,4, Terrapin 2,3,4.

MORRIS, JEFF — Rosemary 3, Outstanding Senior Nominee.

MORTIMER, IRINA — Transferred from Feather River Prep School Blairsden, CA 1983.

HOPEN, RACHEL SARAH — Cross Country 2,3,4, Track 1,2,3,4, Nat. Honor Soc. 3,4, Explorers 3.

HULIN, ANDREW CUTHBERT — Cross Country 1,2,3,4, Track 1,2,3, Band 1,2,3,4, Secretary 4 (Band), Explorers Post 104.

HUMMEL, LISA MARIE — "Liesel," "Bumble," Softball 1, Swimming 1,2,3,4, Choral Ensemble 1, Explorers 3, Terrapin 2,3,4, President 3,4.

JOHNSON, DAWN HOPE — "Porky," "Mrs. J," "D.J.," Representative 3, French Club 1, Choral Ensemble 1, FSA 3,4, (Secretary 4), Wrestlettes 1,2.

KAGLE, JONATHAN C. — Transferred from Nauset Regional High School, Eastham, MA 1983, Jets 1,2,3, Math Team 2,3, Nat. Honor Soc. 2,3, Almanacs 4, Representative 3, Parkland Bowl Team 3.

KING, ALISSIA MARIE — "Lisa King," Choir 1, MIA 4, Medical Assistant 4, Principal Scholars 4, PUPS 3.

KING, ANGELA KAY — "Angie," "Big Ang" "Angie," "Big A," "Ang," Choral Ensemble 1, Office Help 4, PUPS 3,4.

KINGERY, LORI ANN — "Spike," Jets 2,3,4, Rosemary 4 (Art), Set, Stage, Lighting for all Plays, "No No Nanette," Thespians 2,3,4.

KIRTLEY, REBECCA JEAN — "Becky," "He-BeJeBe," Cross Country 3, Track 2, Nat. Honor Soc. 3,4, Explorers 3,4.

KLEIN, RICHARD LARSEN — "Radically Party Rich," "Women-Slayer," "Monosodium Glutamate," Soccer 4, Jets 3, Math Team 3, "Dark of the Moon" 1, Parkland Bowl 3.

LABERTEAUX, ALLEN DAVID — "Al" Art Club 4.

MULLINS, DENISE ANN — Rosemary 1, Choir 1.

NAGELE, MICHAEL EDWARD — Transferred from St. Henry Prep School Belleville, IL 1983, Basketball 1,2,3, Representative 3.

NELSON, JULIE ANN — "JU," Nat. Honor Soc. 3,4, Lighting, Stage, Props, Costumes, Publicity, set, for "Sweet Charity," "Dark of the Moon," "Once Upon a Mattress," "History of an American Film," "No No Nanette," Orchestra 1, Band 1, Thespians 2,3,4.

NORTON, PAUL L. — "Paul," "Nort," Jets 2,3,4, Band 1,2,3,4.

O'MALLEY, MARY MAUREEN — "Mary Mary," "prep," "Mo," Transferred from Durso Middle School Chicago, IL. March 1983. Cross Country 3, Track 3,4, Representative 4.

PARSONS, THERESA LYNN — "Therese," "Terreese," "Treese," Volleyball 1,2,3, Rosemary 4, Senior Editor, Choral Ensemble 1, FSA 3,4, President, Office Help 4.

POPE, ELIZABETH CAROL — "Leesa," "Weezy," "Fudd," "Elmer," "Pope," "Popey," Rosemary 1, French Club 1,2, Band 1,2,3,4, Band Ensemble 1,2,3, Flag Corps 2,3,4, Peer Counselors 4, Girls State 3, "MVL" 2,3,4.

PRENDERGAST, NAVARA ANGELINE — "Green," "Navel," "Bar-rar," "Navra," Basketball 1,4, Swimming 1,2,3,4, Nat. Honor Soc. 3,4, Band 1,2,3,4, Flag Corps 3,4, Terrapin 3,4, Treasurer, U-Club 1,2,3,4.

RIBLEY, VALERIE ANNE — "Val," "Vallie," "Mallory," Nat. Honor Soc. 3,4, Rosemary 1,4, Band 1,2,3,4, Band Ensemble 1,2, Flag Corps 2,3,4, K.L.L.L.E.D. 4, "MVL" 2,3,4.

RICHARDSON, BRADLEY I. — "Brad."

RITTER, ANDREA MALLORY — "Annie," "Garfield," "Annie-Boo," "Rap Rap," "Tex," Stage 2, Set 2,3,4, "Dark of the Moon" 2, "Once Upon a Mattress" 2, "No No Nanette" 3, "History of American Films" 3, "Torch Bearers" 2, Lighting 2, Thespians 3,4, CWT 4, Pathfinders 1.

ROBERTS, CHARLES CHRISTOPHER — "Drac" "Sir Charles," "Charles," "Sir Drac," Football 1,2,3,4, Track 1, Wrestling 1,2,3,4.

ROBINSON, LEE A. — "Lee-Lee," "Eel-Eel," "Nosniber," ECHO 2, Crews 2,3, Band 1,2,3,4, Band Ensemble 3,4, Band Soloist 1,2, Uofl clarinet choir, C-U Clarinet choir, Speech Team 4.

ROBINSON, TIMMY — "Littletaste," Transferred from New Madrid Central High, New Madrid, MO 1984, Baseball 1,2, Basketball 1,2, Football 1,2, Tennis 1,2,3, Track 1,2, Nat. Honor Society 1,2, Art Club 1,2, Band 1,2,3.

ROBINSON, TIMOTHY — "Big taste," Transferred from New Madrid Central High, New Madrid, MO 1984, Baseball 1,2,3, Basketball 1, Cross Country 1,2, Football 1,2, Swimming 2, Tennis 1,2,3, Wrestling 3, Nat. Honor Soc. 1, Art

Club 1,2,3, Treble Choir 1, Homecoming King 1,3.

ROSS, ROBERTA L. — "Robin," "Bert," Band 1,2,3,4, FSA 4, Flag Corps 2,3,4, Co-Captain.

ROY, DAVID GLENN — "Dave," Football 1,2,3,4, Wrestling 1, Band 1,2,4, Band Ensemble 1,4.

SALAMON, AARON MARK — "Sallie," "Sal," Track 2,3, Jets 3, Nat. Honor Soc. 3,4, National French Contest 2,3, Rosemary 3,4, Parkland Bowl Team 3,4, EHI 4.

SAMMARCO, BRENDA SALLY — "Chubbs" Transferred from Addison Trail Addison, IL Sept. 82. FSA 3.

SARABI, ALPAY ALI — "Curly Top," "Poo-Poo," "Alpee," "Father Pie," "I'll Pay," "Crazy Pie," "Bush Brooks," Rosemary 1,2, Underclass Editor 3, Activities Editor 4, Editor-in-Chief, Choral Ensemble 1, Peer Counselor 4.

SCOTT, KATHY — "Boom-Boom," "Kassy," "Crash," "kukulee," ECHO 1, Choral Ensemble 1,2, FSA 3,4, Vice President.

SHAW, CHARLES THOMAS JR. — "Chip," "Chipper," "Chipper-Scunney," Band 1,2, Jazz Band 2,3, Raucus Caucus 3, The Signs 4.

SHELMADINE, TODD MICHAEL — Football 1, Art Scholarship 2, ECHO 1, Chief Editor, Art Club 4, President.

SHORT, TRENT EDWARD — Baseball 2,3,4, Football 1,2,3,4, Nat. Honor Soc. 3,4, Representative 2,3,4, SAR 4, U-Club 2,3,4, Outstanding Senior Nominee.

SMITH, CHERYL LYNN — "Chela," "Chick" "Youngen," "Buckwheat," Nat. Honor Soc. 3,4, Cheerleader 2,3,4.

SMITH, STEPHANIE K. — "Steph," Track 2, Representative 3, Choral Ensemble 1, MIA 2,3,4, Principal Scholars 2,3,4.

SOUTHWOOD, REBECCA — "Becky," Rose-

mary 1, Make-up for "Dark of the Moon," Band 1,2,3,4, Band Ensemble 3, FSA 4, Flag Corps 3,4.

SPLITTSTOESSER, SHERYL ANN — "Sherry," Math Team 1,2,3,4, Nat. Honor Soc. 3,4, Nat. Merit Scholar 4, Set 3,4, Costumes 3,4, Publicity 3,4, "History of American Film," "No No Nanette," "Royal Family," Lighting 3,4, Thespians 3,4, Madrigals 4, Speech Team 3,4.

STEINER, SHAWNA LYNNE — Secretary 4, Representative 1,2,3,4, Orchestra 1, Attendant 2, Homecoming Queen 4, Office Help 4, Cheerleader 2,3,4, Terrapin 2,3,4.

STIGERS, ROBIN D. — "R.B." "ROB," "Robbie," "Stig," "Tigers," "Records," "Randy," ECHO 1, Rosemary 1, Choral Ensemble 1, CWT 3, PUPS 4, WECEP 2, WUHS 3,4.

STRACK, DARIN JOHN — Cross Country 1,2,3,4, Track 1,2,3,4, Nat. Honor Soc. 3,4, U Club 2,3,4.

SWEARINGEN, BRIAN PAUL — "Boo," Basketball 1,2,3,4, Tennis 2,3,4, Home Constr. 4.

SWITZER, BRIAN ROBERT — "Switz," Math Team 2,3, Nat. Honor Soc. 3,4, Nat. Merit Scholar 4, Art Club 4, RIG 1,2,3,4, Explorers 4.

TARMAN, CYNTHIA JANE — "Cindy," "Ci," "C.J." Who's Who Among American High School Students 3, Senior Class Secretary, PUPS 4.

TATMAN, SUSAN DEE — "Susie," "Sus," Cross Country 1, Student Council 1, Spanish Club 1, Band 1, Library Aid 2, Cheerleader 1,2,3, Sophomore Captain, basketball, football, Terrapin 2,3.

TATUM, STEPHANIE LYNNE — "Stevie," "Stephie," Track 2, MIA 2,3,4, Principal Scholars 2,3,4, Tigerettes 1,4.

TAYLOR, CANDIE CARLEEN

TAYLOR, TIMOTHY M. — "Tim," Tennis 1,2,3,4, Student Senate Chairman, President 4, Paleritan 3, Representative 2, Vice-President 4.

THATCH, SONYA RENEE — Track 2,3, French Club 1, Band 1, MIA 4, Principal Scholars 4, Cheerleader 2,3,4.

THOMAS, YVONNE YVETTE "Von," MIA 4, Principal Scholars 3,4, Tigerettes 3.

TIKKU, ASHOK — Math Team 4, Nat. Honor Soc. 2, Orchestra 1.

TOLER, NICHOLE PAIGE — "Nicki," CWT 1.

UNZICKER, TIMOTHY J. — "Tim," Nat. Honor Soc. 2, Band 4, Band Ensemble 4, Orchestra 2.

VAN METER, TRACEY LYNNE — "Tree," Basketball 1,2,3,4, Softball 1, Tennis 2,3,4, Jets Team 3, Nat. Honor Soc. 3,4, Student of Month 4, Representative 3, President 4, DAR 4, Girls State 3, Outstanding Senior.

WAALER, LUKE — "Skywalker," Lighting 2, Crews 2, Orchestra 1,2,3,4.

WHELAN, ERICA CLARE — Basketball 2, Tennis 3,4, Rosemary 1, Treasurer 4, Choral Ensemble 1, Office Help 4, Alternate Girls State 3.

WHITFIELD, MICHELLE SUZANNE — "Michelleb," Choral Ensemble 1, PUPS 4, WECEP 2.

WILLIAMS, CARLOS N. — "Los," Basketball 1, Football 1, ECHO 1, Choral Ensemble 1, Principal Scholars 4, WUHS 4.

WILLIAMS, WINDY LAURA — "Mrs. New York," "D-Queen," "Windy-Woo," "Windy-Pooh," "Windy-O," "Wheezie," "Windy Louise," "Windy-Lou," Choral Ensemble 1, MIA 3,4, Vice-President, Principal Scholars 3,4, Manager Tigerettes 1.

YASUNAGA, CELESTE MARIE — Cross Country 2,3,4, Track 1,2,3 — Spring Captain.

ZERNICH, AMY ELAINE — Cross Country 2,3,4, Track 1,2, French Club 1, Band 1, Band Ensemble 1, Terrapin 3.