



MIKE LARSON—Band 2-3. ALICE ELIZABETH LATHROPE—*Rosemary* 4, Co-Editor in Chief 4; Lambda; Psi; Quill and Scroll 4; Terrapin 2-4, V. Pres. 4; FTA 3-4; French Club 2-4; SK 2-4; GAA 2. GRETCHEN LYNN LAUGHNAN—*Echo* 3-4; Lambda; Psi; French Club 2-4; SK 2,4; Girls' Glee 2.

CANDACE JANE MAX Club 3, Publicity Chm. Choral Ens. 3-4; Other C—Res. Cheerleader 2-3; I NARD—"Gale"—*Rosem* French Club 3-4; Latin C Club 4.



LISA LEE—Transferred from Granite City Senior High School, Granite City, Ill., 1965; Latin Club 2; *May Day*; Band 2-3. LYNN ANN LEIGH—FHA 2; SK 2-4; GAA 2-3; Commercial Club 2-4, Pres. 4; A Cappella 3-4; Choral Ens. 3-4; Girls' Glee 2. GRETCHEN LINN—*Rosemary* 2-4, Ass't. Class Editor 3, Class Editor 4; Quill and Scroll 3-4; FTA 3-4, Treas. 4; French Club 2-4; SK 2-4; Band 2-3; Band Ens. 2-3.

JEROME GENE McAR Wrestling 2-4. LOU McThespians 2-4, V. Pres. 4; *With You*; *The Crucible*; *Dad, Poor Dad*. MARG; Council 2-4; FTA 3-4; Frer



KENNETH J. LEONARD "Kenny"—*Echo* 4; Delta Sigma 3-4; German Club 2; Art Club 2-4, Publicity Chm. 4; Cross-Country 2; Track 2; *The Man Who Came to Dinner*; Class Publicity Chm 3. SKOK LITTLE—*Echo* 2-4, Sports Editor 3, Editor 4; Lambda; Psi; Quill and Scroll 3-4; Student Council 2-4, Treas. 3; Delta Sigma 3-4; Latin Club 2-4, V. Pres. 3, Aedile 4; Tri-High Council 3; *Twelfth Night*; A Cappella 3; Choral Ens. 3; Stage Show 2; Talent Show 3. JOHN E. LOCKARD, JR.—Transferred from Centralia Township High School, 1964; U Club 2-4; French Club 2; Cross-Country 3-4; Track 2-4.

CANDACE KAY McDA? Co-Vice Pres. 3, Co-Pres. 4 —German Club 2-4, V. Pr; Track 2-4. DON LEE Mc 3,4; Golf 2-4.



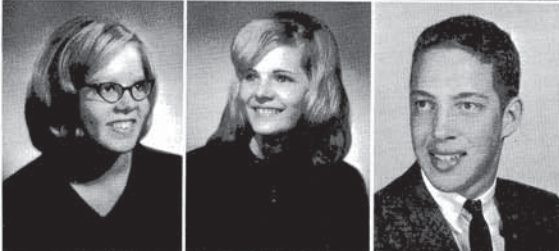
EUGENE B. LONG "Gene"—U Club 3-4; Basketball 2; Wrestling 4; Track 2-4; Football Mgr. SUSAN LORENZ—FTA 4; German Club 2; SK 4; Band 2-4. GEORGE EUGENE LOVETT "Gene"—U Club 4; Spanish Club 2; Football 2-4; Basketball 2-4; Track 2-4.

LINDA MARY McDONA. School, Pacifica, Calif., 196 3; Student Council 2; SK 2 3; Band Ens. 2-3; A Cappel —*Rosemary* 2; Art Club 2 2-3; Folksong Club 4. JIMM



ROSS LOWRY—Lambda; Psi; German Club 2; Football 2-3; Track 2,3. ALLEN MAFFIT. JOHN STUART MAMER—Lambda; Psi, Pres. 3; U Club 2-4; Cross-Country 3-4; Track 2-4; A Cappella 2-4, V. Pres. 3, Pres. 4; Madrigals 3-4; Choral Ens. 2-4; Boys' State 3; Stage Show 3; Talent Show 4.

MARLEEN McINTOSH—SK 2-4; Orch. 2-3; Orch. I LYN McLENDON—Stude 4; FTA 3; French Club 2-3; cert Choir 2; Talent Show 1 —Golf 2-4; U Club 3-4.



MEREDYTH MARCH—Transferred from Millis High School, Millis, Mass., 1965; Girls' Field Hockey, Basketball, Softball 2-3; National Honor Society 3-4; Mass. Cen. Dis. Orch. 2-3; Mass. All-State 3; Class Treas. 2. CHERYL LOUISE MARSHALL—SK 3-4; DE 4, Historian 4; Library Club 2-3. TERRY MARTINIE—Swimming 2.

JANICE MILLER—DE 4. *Echo* 4; *Rosemary* 3; Lam Club 2-4, Secy. 3; SK 2-4 Choruses 3. ALEX MITCH 4; Talent Show 2-3; Stage Sh

ALICE ELIZABETH LATH-
in Chief 4; Lambda; Psi; Quill
Pres. 4; FTA 3-4; French Club
HEN LYNN LAUGHNAN—
Club 2-4; SK 2-4; Girls' Glee 2.

ranite City Senior High School,
Club 2; *May Day*; Band 2-3;
SK 2-4; GAA 2-3; Commercial
4; Choral Ens. 3-4; Girls' Glee
sary 2-4, Ass't. Class Editor 3,
3-4; FTA 3-4, Treas. 4; French
l Ens. 2-3.

nny"—*Echo* 4; Delta Sigma 3-
2-4, Publicity Chm. 4; Cross-
Who Came to Dinner; Class
E—*Echo* 2-4, Sports Editor 3,
nd Scroll 3-4; Student Council
; Latin Club 2-4, V. Pres. 3,
Twelfth Night; A Cappella 3;
lent Show 3. JOHN E. LOCK-
ntralia Township High School,
2; Cross-Country 3-4; Track

J Club 3-4; Basketball 2; Wres-
tling 2; SUSAN LORENZ—FTA 4;
-4. GEORGE EUGENE LO-
nish Club 2; Football 2-4; Bas-

German Club 2; Football 2-3;
JOHN STUART MAMER—
2-4; Cross-Country 3-4; Track
Pres. 4; Madrigals 3-4; Choral
w 3; Talent Show 4.

ferred from Millis High School,
Hockey, Basketball, Softball 2-
; Mass. Cen. Dis. Orch. 2-3;
2. CHERYL LOUISE MAR-
ian 4; Library Club 2-3. TER-

CANDACE JANE MAXWELL "Candy"—French Club 2; Art
Club 3, Publicity Chm. 3; SK 2-4; GAA 2; A Cappella 3-4;
Choral Ens. 3-4; Other Choruses 2. BRIDGET ELAINE MAY
—Res. Cheerleader 2-3; Banner Girls 4. ALICE GALE MAY-
NARD—"Gale"—*Rosemary* 3; Lambda; Psi; Terrapin 3-4;
French Club 3-4; Latin Club 2-3; SK 2-3; GAA 3-4; Folksong
Club 4.

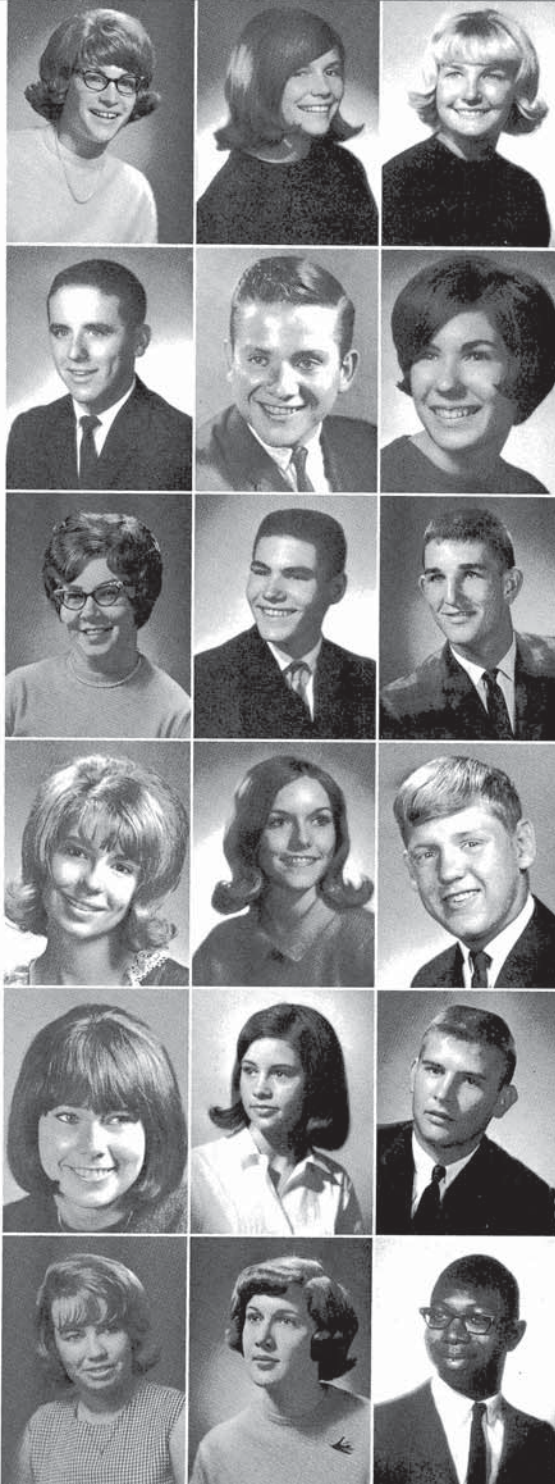
JEROME GENE McARTHUR "Jerry"—Library Club 3-4;
Wrestling 2-4. LOU McCLELLAN—*Echo* 4; *Rosemary* 4;
Thespians 2-4, V. Pres. 4; Delta Sigma 2-4; *You Can't Take It
With You*; *The Crucible*; *The Man Who Came to Dinner*; *Oh
Dad, Poor Dad*. MARGARET McCLOY "Peggy"—Student
Council 2-4; FTA 3-4; French Club 2-4; SK 2-4.

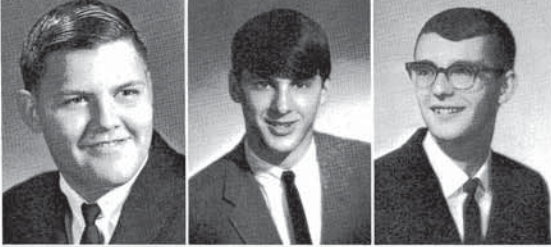
CANDACE KAY McDANIEL "Candy"—Library Club 2-4;
Co-Vice Pres. 3, Co-Pres. 4. JOSEPH McDANIEL, JR. "Joe"
—German Club 2-4, V. Pres. 4; Library Club 4; Football 2-3;
Track 2-4. DON LEE McDONALD—Basketball 2-4; U Club
3,4; Golf 2-4.

LINDA MARY McDONALD—Transferred from Oceana High
School, Pacifica, Calif., 1965; Cheerleader 3; Track Statistician
3; Student Council 2; SK 2,4; GAA 3; Band 2-3; Band Soloist
3; Band Ens. 2-3; A Cappella 4. JANE ALICE McFETRIDGE
—*Rosemary* 2; Art Club 2-4; SK 2-4; Orch. 2-3; Orch. Ens.
2-3; Folksong Club 4. JIMMY DALE McGRAW.

MARLEEN McINTOSH—*Echo* 2; *Rosemary* 2; Art Club 2-4;
SK 2-4; Orch. 2-3; Orch. Ens. 2-3; Folksong Club 4. MARI-
LYN McLENDON—Student Council 2-4; Orchestra 2-4, Pres.
4; FTA 3; French Club 2-3; SK 2-4; *Oh Dad, Poor Dad*; Con-
cert Choir 2; Talent Show 3-4. LARRY DENNIS MERRICK
—Golf 2-4; U Club 3-4.

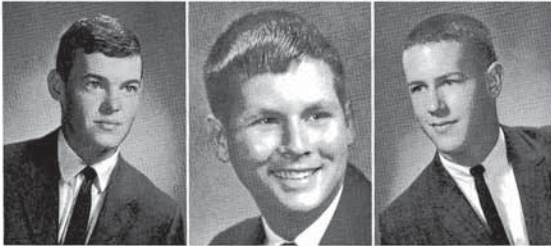
JANICE MILLER—DE 4. ANDREA MILLICAN "Andy"—
Echo 4; *Rosemary* 3; Lambda; Psi; French Club 4; German
Club 2-4, Secy. 3; SK 2-4; *Twelfth Night*; Orch. 2; Other
Choruses 3. ALEX MITCHELL "Billy"—Art Club 2-4, Pres.
4; Talent Show 2-3; Stage Show 2-3.





LAWRENCE W. MOORE "Sarge"—U Club 3-4; Library Club 3-4, Co-Pres. 4; Basketball Mgr. 3-4; Track 4. WAYNE DWIGHT MOORE—Cross Country 2; Track 2-3; Homecoming Gen. Chm. 4. DANIEL MORTLAND "Mort"—U Club 4; Cross Country 3-4; Track 3-4.

FRED I. ORMISTON—Basketball 2-4; Golf 2-4. Student Council 4; Tri-Hig



JIM MOYER—Basketball 2; Golf 3-4; Track 2; Class Secy. 4. ROSS MUELLER "Hoss"—Swimming 4; Band 2-4; Band Ens. 2-4; Orchestra 4. WILLIAM A. MUNSE "Bill"—U Club 2-4; Basketball 2; Swimming 2-4, Capt. 4; Golf 2-3; A Cappella 3-4; Madrigals 3-4; Choral Ens. 3-4; Concert Choir 2; Talent Show 3-4; Stage Show 3.

DAVID LEE PALMISAN—Library Club 4; Football 2; TURO COLINA PAREJ fonsa Ugarte High School, cer 3; Spanish Club 4. MAI



JORJA LYN NEUPERT—Psi; French Club 2-3; Art Club 4; GAA 2; Commercial Club 3; WOLFGANG NEMETH "Wolf"—Echo 3-4; Rosemary 3; Quill and Scroll 3; Student Council 4; Cross Country 2; Swimming 2; Class Treas. 4. THERYL NEWLAND—Echo 3-4; Thespians 3-4; Delta Sigma 2-4; German Club 2-4; *Twelfth Night, The Crucible, The Man Who Came to Dinner.*

DAVID PARKINSON—Country 2-4; Basketball 2; Pres. 4. ADRIANNE P. FTA 2-3; French Club 4; Tiger's Den 4; Publicity Cl ELA ANN PARKS "Pam" 2-4.

Miss Rosemary Was Crowned at the Winter Formal

NANCY ANN PARROTTI 3-4; Office Help 2-3. ROY PATTERSON "Jenny"—Civil 2-4; Thespians 2-4, Tr 2-3; Spanish Club 4; Can 2-4; *Twelfth Night, The Cener, A Thurber Carnival;* Song Club 4.



SHERYLL S. NEWMAN "Sheri"—FHA 2; SK 2; DE 4. SANDRA K. NEWMAN "Sandie"—Echo Ass't. Ad. Mgr. 3; Rosemary 3; SK 2-3; Commercial Club 3; Library Club 3. JANE NORTON—Rosemary 2-4, Business Mgr. 3-4; Lambda; Psi; Quill and Scroll 3; Thespians 3-4; Delta Sigma 3-4; SK 2-4; Band 2-4; Band Ens. 2-3; Orchestra 2-4; Color Guard 2-4, Capt. 3-4.

CLARA PETTINGA—Or Madrigals 2-4; Choral Ensisy 3-4, Capt. 4; Talent KATHLEEN PETTY—Rc and Scroll 4; Student Counpella 3; Choral Ens. 3; Girleader 2; Banner Girls 4; Prom Gen. Chm. 3; Homo Talent Show 4. WILLIAM



NAN O'BRIEN—Echo 2-4; Lambda; Terrapin 2-4, Secy. 3-4; SK 2-4; GAA 2-3. SHARON KAY O'CONNOR—Orchosis 2-4, Jr. Rep. 3, V. Pres. 4; SK 2-4; A Cappella 3-4; Choral Ens. 2-3; Concert Choir 2; Res. Cheerleader 3; Talent Show 3-4. STEPHEN OEHMKE "Omp"—U Club 2-4; Library Club 2; Football 2; Cross Country 3; Track 2-4.

ROBERT POWERS "Bob" TROY PRESTON—Cross 4; Madrigals 3-4; Choral Show 3-4. MARCIA S. R SK 2-4; Office Help 4.

ge"—U Club 3-4; Library Club gr. 3-4; Track 4. WAYNE entry 2; Track 2-3; Homecoming; TLAND "Mort"—U Club 4;

lf 3-4; Track 2; Class Secy. 4; nning 4; Band 2-4; Band Ens. MUNSE "Bill"—U Club 2-4; st. 4; Golf 2-3; A Cappella 3-3-4; Concert Choir 2; Talent

French Club 2-3; Art Club 4; LFGANG NEMETH "Wolf" ad Scroll 3; Student Council 4; ass Treas. 4. THERYL NEW-4; Delta Sigma 2-4; German ructible, *The Man Who Came*

ter Formal

"—FHA 2; SK 2; DE 4. SAN- Echo Ass't. Ad. Mgr. 3; Rose- lub 3; Library Club 3. JANE iness Mgr. 3-4; Lambda; Psi; -4; Delta Sigma 3-4; SK 2-4; hestra 2-4; Color Guard 2-4,

mbda; Terrapin 2-4, Secy. 3-4; AY O'CONNOR—Orchesis 2-4; A Cappella 3-4; Choral Ens. erleader 3; Talent Show 3-4. —U Club 2-4; Library Club 2; sk 2-4.

FRED I. ORMISTON—Football 4; Track 3. DAN PAGE— Basketball 2-4; Golf 2-4. GREGG L. PAINTER "Ig"—Psi; Student Council 4; Tri-High Council 4.

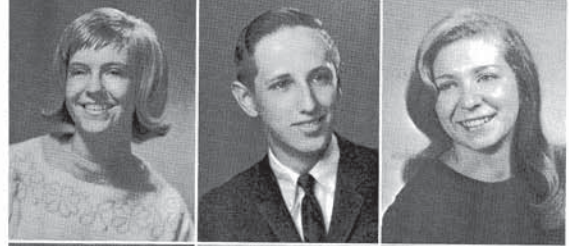
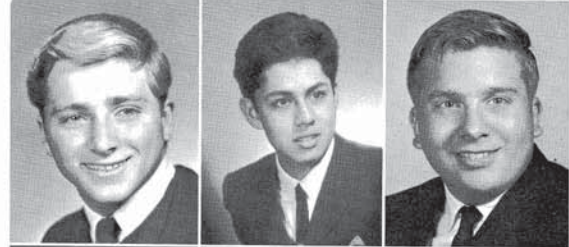
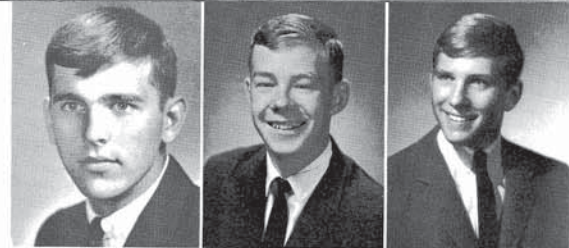
DAVID LEE PALMISANO "Dave"—DO 4, V. Pres. 4; Library Club 4; Football 2; Wrestling 2-4; Track 2. LUIS AR- TURO COLINA PAREJA "Lucho"—Transferred from Alfonso Ugarte High School, San Tsidro, Lima, Peru, 1965; Soccer 3; Spanish Club 4. MARK KEVIN PARIS.

DAVID PARKINSON—U Club 3-4; Spanish Club 3; Cross Country 2-4; Basketball 2; Track 2-4; Tiger's Den Council 2-4, Pres. 4. ADRIANNE PARRISH—Terrapin 3-4, Treas. 4; FTA 2-3; French Club 3; SK 2-4, Treas. 4; Banner Girls 4; Tiger's Den 4, Publicity Chm. 4; Class Publicity Chm. 4. PAM- ELA ANN PARKS "Pam"—*Rosemary* 3-4; Art Club 2-3; SK 2-4.

NANCY ANN PARROTT—FHA 2; SK 2-4; Commercial Club 3-4; Office Help 2-3. RONALD PEPLow "Ron". JENIFER PATTERSON "Jenny"—*Echo* 4; Lambda; Psi; Student Council 2-4; Thespians 2-4, Treas. 3; Delta Sigma 2-4; Latin Club 2-3; Spanish Club 4; Camera Club 2-3, Secy.-Treas. 2-3; SK 2-4; *Twelfth Night, The Crucible, The Man Who Came to Dinner, A Thurber Carnival*; Girls Glee Club 2; Girls State 3; Folk Song Club 4.

CLARA PETTINGA—Orchesis 2-3; SK 2-4; A Cappella 2-4; Madrigals 2-4; Choral Ens. 2-4; Cheerleader 2-4, Res. 2, Varsity 3-4, Capt. 4; Talent Show 2-4; Stage Show 2-3. JULIE KATHLEEN PETTY—*Rosemary* 4, Co-Editor in Chief 4, Quill and Scroll 4; Student Council 2-3; SK 2-4, V. Pres. 4; A Cappella 3; Choral Ens. 3; Girls Glee Club 2, Pres. 2, Res. Cheerleader 2; Banner Girls 4; Tiger's Den 2-3; Hatchet Orator 3-4; Prom Gen. Chm. 3; Homecoming Gen. Chm. 4; Stage Show 3; Talent Show 4. WILLIAM PHEBUS—German Club 3-4.

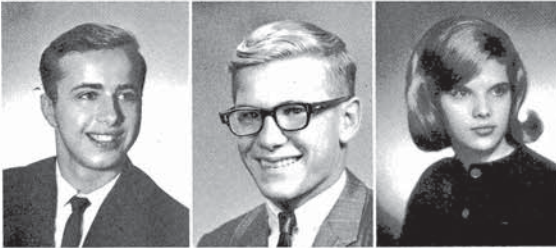
ROBERT POWERS "Bob"—U Club 3-4; Basketball Mgr. 2-4. TROY PRESTON—Cross Country 4; Track 2; A Cappella 2-4; Madrigals 3-4; Choral Ens. 2-4; Talent Show 3-4; Stage Show 3-4. MARCIA S. RASNER—*Rosemary* 2; Art Club 2; SK 2-4; Office Help 4.





CHARLENE PUTERBAUGH—FHA 3-4, V. Pres. 3, Secy. 4; German Club 2; SK 2; Library Club 2-4, Treas. 2, Secy. 3-4; Concert Choir 2-4, Librarian 3-4. REX RENFREW—U Club 3-4; Football 2-4, Pittman Award 4; Wrestling 2; Track 2-4; Boys State 4. CLARENCE RETTER "Tex"—U Club 3-4; Football 2-4; Wrestling 2; Track 2-4; A Cappella 2-4; Madrigals 2-3; Choral Ens. 2-3.

SUSAN LYNNE SALISI—pianos 2-3, Secy. 4; Delta *Can't Take It With You*; 3; Orchestra 3-4. CHARLENE—DO 3; FTA 2-4; Latin C—DO 3; DE 4; Library Cl



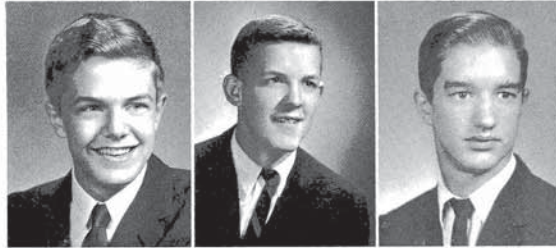
DANNY RICHARDS "Butch"—Transferred from University High School 1965; Class Treas. 2; German Club 3-4; Art Club 4. JAY RICHARDSON—DO 4, Treas. 4; Wrestling 2-4. MARY LOUISE RIDDELL "Mary Lou"—FHA 2-3; Spanish Club 2; GAA 2; DE 4; Girls Glee Club 3; Office Help 2-3.

GEORGEANNE SCHARI—LOUIS SCHAUDT—U C KATHERINE ANN SCF Mattoon High School, Ma Latin Club 2; SK 4; A C Song Club 4.



JUDITH ELAINE RIDLEN "Judy"—*Rosemary* 2-4, Activities Ass't. 3, Activities Editor 4; Quill and Scroll 3-4; French Club 3-4; SK 2-4; Band 2-4, Librarian 2-4; Band Ens. 3-4; Orchestra 4. RITA ANN RISSER—*Rosemary* 4, Copy Editor 4; Psi; Thespians 2-4; Delta Sigma 2-4; SK 2-3; A Cappella 2-4, Secy. 3; Choral Ens. 2-3, Banner Girls 4; Tiger's Den 2-3; Class Pres. 3. LARRY ROBERSON—DE 3,4.

JOHN SCHRUMPF—*Ech* 4; Lambda; Psi; Quill and ; 3, V. Pres. 4; U Club 3-4; Band 2-4, Drum Major; Ba 2-4; Tigers' Den 2-3, S.C. SAR Award. ROBERT SC Club 3-4; Cross-Country 2; —Thespians 2-3; Delta Sig *Twelfth Night; The Man V* 4; AFS 2.



ALAN ROBERTSON—*Echo* 2-3; *Rosemary* 2; Lambda; Delta Sigma 3-4; Camera Club 2-3, Pres. 2-3; *The Man Who Came to Dinner*; Orchestra 2-4; Orchestra Ens. 2-4; Student Director 4. Pres. JOHN ROGERS—Transferred from Northern Burlington County High School, Columbus, New Jersey, 1965; Student Council 3; Baseball 2-3; Basketball 2-4; Football 4. BILL ROLINS—Band 4; Band Ens. 4; Orchestra 3.

Seniors



CAROLYN ROSS—SK 3. SUSAN ROWE—Student Council 2; Terrapin 2-4; FTA 4; French Club 3; SK 2-4; GAA 3; A Cappella 2-4; Cheerleader 2-4; Res. 2, Varsity 3-4; Tigers' Den 3-4. RANDY ROY—Band 2-3; Band Ens. 3.

TIM SCOTT—Lambda; P 2-3; Band 2; Band Soloist ; chestra 2. DARLEEN KAY 4; Library Club 3; Band Transferred from Divernon Student Council 2; Science t U Club 3-4; Golf 3-4; Basket



GARY RUPPEL—U Club 2-4; Cross Country 2; Basketball 2-4; Track 2-4. MICHAEL RUDICH "Rudy"—U Club 3-4; Latin Club 2; Football 2-4; Wrestling 2-4; Track 2-4. TINA ANNETTE RUSK—*Rosemary* 2-3; French Club 2-4; Art Club 2-3; SK 2-4; GAA 2-3.

ROSEMARY SHEPHERD DELER—FHA 4; SK 2-4; FTA 4; French Club 4; SK 2-

FHA 3-4, V. Pres. 3, Secy. 4; Club 2-4, Treas. 2, Secy. 3-4; REX RENFREW—U Club 4; Wrestling 2; Track 2-4; TER "Tex"—U Club 3-4; 2-4; A Cappella 2-4; Madri-

Transferred from University German Club 3-4; Art Club 1, Treas. 4; Wrestling 2-4; "Lou"—FHA 2-3; Spanish Club 3; Office Help 2-3.

dy"—Rosemary 2-4, Activities and Scroll 3-4; French Club 2-4; Band Ens. 3-4; Orchestra 4; Copy Editor 4; Psi; SK 2-3; A Cappella 2-4; Secy. 1; Tiger's Den 2-3; Class Pres.

; Rosemary 2; Lambda; Delta 2-3; *The Man Who Came to Dinner* 2-4; Student Director transferred from Northern Burlington, New Jersey, 1965; Student 12-4; Football 4. BILL ROLSTON—Orchestra 3.

AN ROWE—Student Council 3; SK 2-4; GAA 3; Res. 2, Varsity 3-4; Tigers' 3; Band Ens. 3.

Cross Country 2; Basketball 3; "Rudy"—U Club 3-4; Wrestling 2-4; Track 2-4. TINA 3; French Club 2-4; Art Club

SUSAN LYNNE SALISBURY—Student Council 2-4; Thespians 2-3, Secy. 4; Delta Sigma 2-4; FTA 3-4; SK 2-4; *You Can't Take It With You*; *Twelfth Night*; Band 2-4; Band Ens. 3; Orchestra 3-4. CHARLOTTE SAWYER "Charlie"—Lambda; Psi; FTA 2-4; Latin Club 2; Orchestra 2-4. GARY SCAFF—DO 3; DE 4; Library Club 2-4; *You Can't Take It With You*.

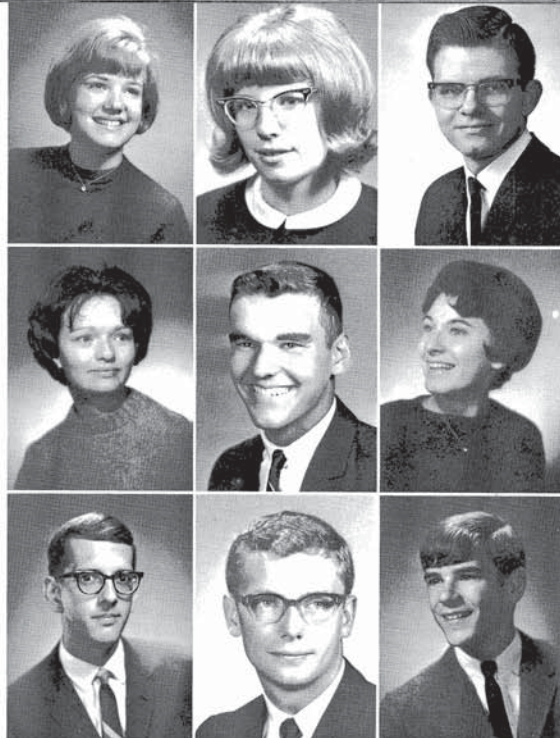
GEORGEANNE SCHARF—FTA 2-4; SK 2-4; GAA 2. DON LOUIS SCHAUDT—U Club 3-4; Football 2-4; Track 2-3. KATHERINE ANN SCHLOZ "Kathy"—Transferred from Mattoon High School, Mattoon, Ill. 1964; French Club 3-4; Latin Club 2; SK 4; A Cappella 4; Other Chorus 3; Folk Song Club 4.

JOHN SCHRUMPF—*Echo* 2, News Ed. 3, Co-Editor-in-Chief 4; Lambda; Psi; Quill and Scroll 3-4; Student Council 2-4, Parl. 3, V. Pres. 4; U Club 3-4; Tri-High Council 2-3; Golf 3-4; Band 2-4, Drum Major; Band Ens. 2-4; Dance Band 2-4, Orch. 2-4; Tigers' Den 2-3; S.C. National Delegate 3; Class Pres. 2; SAR Award. ROBERT SCOTT "Bob"—Student Council 4; U Club 3-4; Cross-Country 2; Swimming 2-4. PAUL SCOTTON—Thespians 2-3; Delta Sigma 2-3; Football 2; Swimming 2-4; *Twelfth Night*; *The Man Who Came to Dinner*; Folksong Club 4; AFS 2.

Seniors Again Out-Classed Juniors at Class Night

TIM SCOTT—Lambda; Psi; Football 2-4; Wrestling 3; Track 2-3; Band 2; Band Soloist 2; Band Ens. 2; Dance Band 2; Orchestra 2. DARLEEN KAYE SERGENT—SK 4; GAA 2; DO 4; Library Club 3; Band 2. JAMES E. SEIDERS "Jim"—Transferred from Divernon High School, Divernon, Ill., 1964; Student Council 2; Science Club 2; Camera Club 2; Baseball 2; U Club 3-4; Golf 3-4; Basketball 3-4.

ROSEMARY SHEPHERD "Rosie". MARY FRANCES SHIDELER—FHA 4; SK 2-4; GAA 2. KATHY SHUMAKER—FTA 4; French Club 4; SK 2-4.





MICHAEL D. SILVER. STEPHEN L. SILVER "Long John"—Science Club 2; JETS 2; Chemistry Club 2; Football 2; Wrestling 2; Track 2. VICKIE JO SLIFE—*Rosemary* 3; FTA 3-4; SK 2-4; Band 2-4, Librarian 3, Secy. 4, Band Council 4; Band Ens. 2-4.

BRETT SUTTON—ball 2-4; Track 2-4; I Band 2-4; Tigers' De Show 3; Prom Co-Ch BORN—"Jim"—Lam Band 2-4; Band Solo Orch. 2.



HERBERT J. SLIGER, JR. "Herb"—Football 2-4; Track 2-4; U Club 3-4; Boys' State 3. JOYCE ELAINE SMITH "Joy"—FHA 3-4, V. Pres. Recreation 4; SK 2-3; GAA 2. ROBERT A. SMITH "Bob"—U Club 2-4; Football 2-4; Wrestling 3; Track 2-4.

ELIZABETH ROSE Commercial Club 4; I TRIGIA ANN TAYLOR GAA 2; A Cappella brarian 2. JERRY DE in Club 2; JETS 4; F



SHIRLEY SMITH—FHA 4; GAA 2-3; Talent Show 4. TIMOTHY O. SMITH—Psi; Latin Club 2; Cross-Country 3-4; Track 2-4, V. Pres. 4; Band Ens. 2-4; Dance Band 3-4; Orch. 4. MICHAEL JOSEPH SPANBAUER.

DEBORAH ELAINE German Club 4; Art C TIEBOUT—"Libby"—4; FTA 3-4, Pres. 4; Fi 2-3; SK 2-4; Band 2-4; HERB TIEDEMANN Country 3-4; Track 2-4; Class V. Pres. 2; Class F



DAVID EDWARD STANLEY—U Club 4; Football 2-4; Wrestling 2-4. DAVID SPEERS "Dave"—*Echo* 2-4; *Rosemary* 2-4; Quill and Scroll 3-4; Student Council 2-4; Science Club 2-3; Camera Club 2-3; JETS 2-3; Band 2-4; Band Ens. 2-4; Orch. 2-4; Radio Club 3, Secy. 3; Stage Show 2-3; Talent Show 2-4. NANCY STAPP—Latin Club 2; SK 2-4.

LOYAL TINGLEY—"bie"—Orchestrator 4; SK; JOHN TITUS.



IRIS STEVENS "Flower"—Student Council 2; Orchestration 4; Spanish Club 3-4, V. Pres. 4; SK 2-4; Concert Choir 2-3; Majorette 4; Office Help 4. MARC STEVENS. WILLIAM STEVENS "Skip"—Football 2-3; Track 2.

ROSEANNE TOLLE—2-4; SK 2-3. BILL TR



HENRY S. STILLWELL III "Butch"—Football 2; Basketball 2; Track 2; A Cappella 2-4; Madrigals 2-4; Choral Ens. 2-4; Talent Show 2-4; Stage Show 2-3. TERESA DAWN STIPP—French Club 2; SK 2-4; GAA 2; A Cappella 4; Choral Ens. 3; Girls' Glee 3. LINDA STONE—*Echo* 2; FHA 2; SK 2-4; GAA 2; Office Help 2-3.

REBECCA SUE VAN FTA 2-4, Secy. 4; Latin Commercial Club 3. RU Psi; Latin Club 2; SK 2 ferred from University Hi Sigma 3-4; German Clu Mgr. 3; *Man Who Cam*

EN L. SILVER—"Long John"
stry Club 2; Football 2; Wres-
-IFE.—Rosemary 3; FTA 3-4;
-ecy. 4, Band Council 4; Band

rb"—Football 2-4; Track 2-4;
E ELAINE SMITH "Joy"—
SK 2-3; GAA 2. ROBERT A.
otball 2-4; Wrestling 3; Track

AA 2-3; Talent Show 4. TIM-
Club 2; Cross-Country 3-4;
; Band Ens. 2-4; Dance Band
4 SPANBAUER.

—U Club 4; Football 2-4;
"Dave"—Echo 2-4; Rosemary
nt Council 2-4; Science Club
3; Band 2-4; Band Ens. 2-4;
Stage Show 2-3; Talent Show
2; SK 2-4.

udent Council 2; Orchest 4;
2-4; Concert Choir 2-3; Ma-
STEVENS. WILLIAM STE-
ck 2.

Butch"—Football 2; Basketball
adrigals 2-4; Choral Ens. 2-4;
3. TERESA DAWN STIPP—
A Cappella 4; Choral Ens. 3;
-Echo 2; FHA 2; SK 2-4; GAA

BRETT SUTTON—Lambda; Psi; U Club 2-4; JETS 2; Foot-
ball 2-4; Track 2-4; Band 2-4, Pres. 4; Band Ens. 2-3; Dance
Band 2-4; Tigers' Den 3-4, Treas. 4; Talent Show 3-4; Stage
Show 3; Prom Co-Chm. 3. DICK TABELING. JAMES TA-
BORN—"Jim"—Lambda; Psi; Student Council 3-4; Track 3;
Band 2-4; Band Soloist 2-3; Band Ens. 2-3; Dance Band 2-4;
Orch. 2.

ELIZABETH ROSE TAUBE—"Rose"—SK 2-4; GAA 2;
Commercial Club 4; Library Club 2-3; Concert Choir 2. PA-
TRICIA ANN TAYLOR—"Pat"—Echo 4; FTA 3-4; SK 2-4;
GAA 2; A Cappella 3-4; Choral Ens. 3; Girls' Glee 2; Li-
brarian 2. JERRY DEEN TEEL—"Stump"—U Club 3-4; Lat-
in Club 2; JETS 4; Football 2-4; Track 2-4; Wrestling 3.

DEBORAH ELAINE TEIGLER—"Debbi"—French Club 4;
German Club 4; Art Club 2; SK 2-4; Orch. 2. ELIZABETH
TIEBOUT—"Libby"—Lambda, Pres.; Psi; Student Council 2-
4; FTA 3-4, Pres. 4; French Club 2-4, V. Pres. 3-4; Latin Club
2-3; SK 2-4; Band 2-4; Band Ens. 2-4; Dance Band 4; Orch. 3.
HERB TIEDEMANN—Student Council 4; U Club 3-4; Cross
Country 3-4; Track 2-4; Boys' State 3; Homecoming Chm. 4;
Class V. Pres. 2; Class Pres. 4.

LOYAL TINGLEY—"Terry". DEBORAH TINSLEY—"Deb-
bie"—Orchest 4; SK 2-4; GAA 2; Band 2-4; Class Secy. 3.
JOHN TITUS.

ROSEANNE TOLLE—Lambda; FTA 3-4; FHA 2; Latin Club
2-4; SK 2-3. BILL TROTTER—Track 3. DAVE UHER.

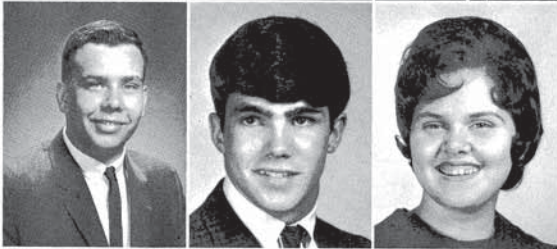
REBECCA SUE VAN CLEAVE—"Becky"—Rosemary 2;
FTA 2-4, Secy. 4; Latin Club 2-4, Program Chm. 3; SK 2-4;
Commercial Club 3. RUTH NANCY VANERKA—Lambda;
Psi; Latin Club 2; SK 2-4. LELAND VAN KOTEN—Trans-
ferred from University High School, 1964; Thespians 3-4; Delta
Sigma 3-4; German Club 3; Library Club 3-4; Cross Country
Mgr. 3; *Man Who Came to Dinner; Oh Dad, Poor Dad.*





NANCY WAKEFIELD—Lambda; French Club 4; German Club 2-4; SK 2-4; Band 2-4; Head Librarian 4; Band Ens. 2-3. R. ROSS VEACH—Transferred from Emporia High School, Emporia, Kansas, 1965. DANA WALDEN—Football 2; Basketball 2; Band 2-3; Band Ens. 2-3; Dance Band 2-3; Orch. 3; Stage Show 2-3; Talent Show 2-4.

MARY WINEGARNER Ed. 4; Student Council 3 Glee 2; AFS 2-4. NAN SK 2-4; DE 4; Secy. 4; C —Thespians 3-4, Secy. 4; *Crucible; The Man Who A Cappella* 2-4; Madrigal 2-4; Stage Show 2-3.



F. ALAN WALTERS "Waldo"—U Club 4; Football 2-4; Wrestling 3; Track 2-4; Band 2-3. PAUL WALKER—Swimming 4. SHIRLEY WATKINS "Shirl"—SK 4.

COLLETTE WOODS " SK 4; GAA 2. ROSEMA 2-4; Band 2-4; Band En *Rosemary* 3; Terrapin 4; 1 Concert Choir 2.



MARY ELIZABETH WEISIGER—*Rosemary* 2; Student Council 3-4; FTA 3-4; Historian 4; French Club 2-4; SK 2-4; Concert Choir 2. DAVE WEIDNER. MELVIN WELLS.

FRANCOISE WUYTS "F. Ghent, Belgium; Student C German Club 4. KATHRY Sigma 4; FTA 4; SK 2-4; 3; Other Chorus 2. JOH Student Council 2; Latin Cl

Graduation Brought Relief, and Optimism for Future



SHARON WIGGAM—Transferred from Lawrence Central High School, Indianapolis, Indiana, 1964; FTA 4; Spanish Club 3-4; SK 3-4; GAA 2; Library Club 3, Secy. 3. SHIRLEY ANN WETHERALD—FTA 2; FHA 3-4; V. Pres. Degrees 4; SK 2-4; Office Help 2-4. DAVID WILLIAMS—German Club 3; Library Club 4.

Thomas
Chris B
Janet T
Daniel
Mark E
Joe Gra
Dorthy
Stephen
Barbara



EARL LAWRENCE WILLIAMSON "Larry"—*Echo* 2-4; Gold 3-4; Track 2; A Cappella 3-4; Madrigals 3-4; Choral Ens. 2-4; Other Chorus 2; Talent Show 3-4; Stage Show 3. RICHARD WILSON "Rich"—DE 4; Football 2-3; Track 2-3. VICKIE JUNE WIMMER "Vic"—SK 2,4; Band 2-3; Girls' Glee 4.

a; French Club 4; German Librarian 4; Band Ens. 2-3. from Emporia High School, WALDEN—Football 2; Bas-3; Dance Band 2-3; Orch. 3;

U Club 4; Football 2-4; 3. PAUL WALKER—Swim-mer!—SK 4.

ER—Rosemary 2; Student 4; French Club 2-4; SK 2-4; ER. MELVIN WELLS.

for Future

red from Lawrence Central 1, 1964; FTA 4; Spanish Club b 3; Secy. 3. SHIRLEY ANN -4; V. Pres. Degrees 4; SK 2-ILLIAMS—German Club 3;

MSON "Larry"—Echo 2-4; 4; Madrigals 3-4; Choral Ens. ow 3-4; Stage Show 3. RICH-4; Football 2-3; Track 2-3. c"—SK 2,4; Band 2-3; Girls'

MARY WINEGARNER—Echo 2; Rosemary 2-4, Ass't. Class Ed. 4; Student Council 3-4; FTA 3-4; SK 2-4; GAA 2; Girls' Glee 2; AFS 2-4. NANCY WINKLER—Echo 4; FHA 2-3; SK 2-4; DE 4, Secy. 4; Girls' Glee 2. EVELYN KAY WOLF—Thespians 3-4, Secy. 4; Delta Sigma 3-4; *Twelfth Night; The Crucible; The Man Who Came to Dinner; Oh, Dad, Poor Dad;* A Cappella 2-4; Madrigals 2-4; Choral Ens. 2-4; Talent Show 2-4; Stage Show 2-3.

COLLETTE WOODS "Cocamo"—FHA 4; Spanish Club 2; SK 4; GAA 2. ROSEMARY WOOTERS—Rosemary 2-3; SK 2-4; Band 2-4; Band Ens. 2-4. JANET WRIGHT "Jan"—Rosemary 3; Terrapin 4; French Club 2-4; Latin Club; SK 2-3; Concert Choir 2.

FRANCOISE WUYTS "Francie"—AFS Exchange Student from Ghent, Belgium; Student Council 4; Orchestras 4; French Club 4; German Club 4. KATHRYN ANNE YATES "Kathy"—Delta Sigma 4; FTA 4; SK 2-4; GAA 2; A Cappella 3-4; Choral Ens. 3; Other Choruses 2. JOHN DAVID WYNINGER "Dave"—Student Council 2; Latin Club 2; Cross Country 2.

MICHAEL C. ZBROZEK "Mike"—Transferred from Onarga Military School, Onarga, Ill., 1964; Football 2; Swimming 2; Track 2; Glee Club; A Cappella 3-4; Madrigals 3-4. VERONICA ZISKA "Ronni"—Rosemary 2; FTA 3; French Club 2-3; SK 2-4; GAA 2.



Camera Shy

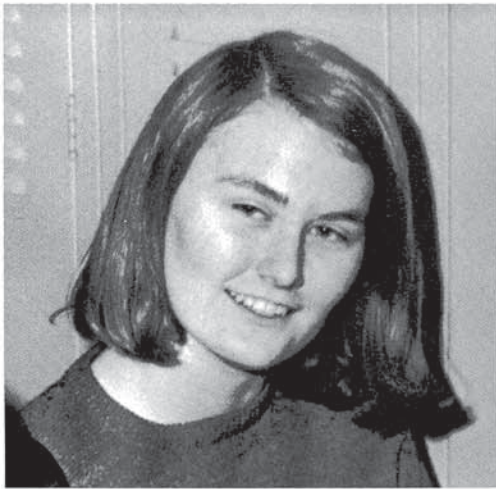
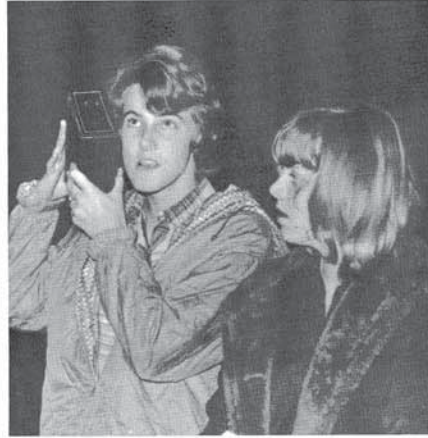
Thomas Betts
Chris Boley
Janet T. Buck
Daniel J. Crain
Mark Dennis
* Joe Grandfield
Dorothy M. Green
Stephen Hall
Barbara Hurdle

Truman Jackson
Clementine King
Judith L. King
Thomas Kosowski
Donald Lewis
Bill Lillard
Patsy Marshall
Fred Melchi
Jay C. Mock

Robert Nash
Ronald Rochkes
Michael Roff
Charles Schlatter
Gay G. Smith
Robert J. Smith
Gertrude Ward
Clarence Winfrey
Patricia York



Underclassmen Express Themselves.



JUNIOR CLASS OFFI
Back Row: Dan Smith,
Graham, Treas.

John Aleshire, Linda Algee,
Peggy Allen, Dean Apperso
plegate, Crystal Applegate, R

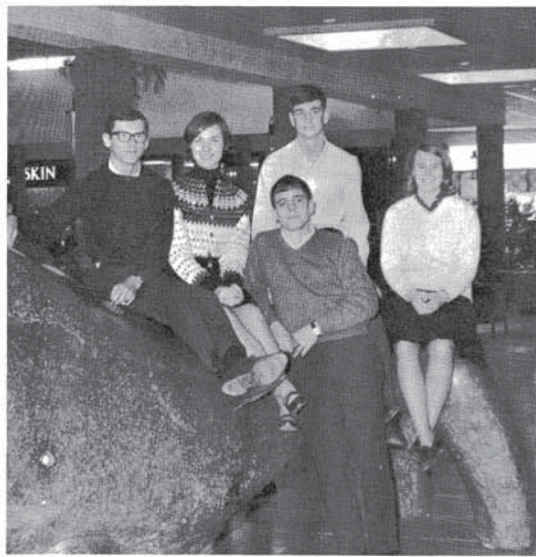
Bill Armon, Ann Armstrot
Carol Aubuchon, Karon Bak
tle, Caroline Belk, Trudy Bel

Mary Bennett, Pete Berkow
ry, Dave Bialeschki, Bob
Blacker, Debbie Blanchard,

Elizabeth Boggess, Jean B
Bollman, Larry Borchers, N
Mike Brash, Carol Bright, N

Mary Jean Broghamer, L
Marsha Brown, Pam Brown,
Sharon Brown, Sherrie Br
Bunn.

en
selves



Lincoln Square Hosts Junior Prom

The junior class elections produced capable officers in Paul Brown, president; Danny Smith, vice president; Sigrid Johansen, secretary; Betty Graham, treasurer; and Elgin Summerfelt, publicity chairman.

As in other years, the juniors put most of their effort into work on the prom which was held in Lincoln Square Mall. Their main money-making project was the sale of Stanley Products, supplemented by a candy sale and a car wash last summer.

JUNIOR CLASS OFFICERS—*Front Row:* Elgin Summerfelt, Publicity Chm. *Back Row:* Dan Smith, V-Pres.; Sigrid Johansen, Secy.; Paul Brown, Pres.; Betty Graham, Treas.

John Aleshire, Linda Algee, Frederic Allen, Peggy Allen, Dean Apperson, Connie Applegate, Crystal Applegate, Ronnie Arie.



Bill Armon, Ann Armstrong, Lynn Ate, Carol Aubuchon, Karon Baker, Roger Battle, Caroline Belk, Trudy Bell.



Mary Bennett, Pete Berkow, Sandra Berry, Dave Bialeschki, Bob Birt, Cheryl Blacker, Debbie Blanchard, Donna Blume.



Elizabeth Boggess, Jean Bollman, Susan Bollman, Larry Borchers, Mike Bothfuhr, Mike Brash, Carol Bright, Natalie Brodie.



Mary Jean Broghamer, Lynne Brown, Marsha Brown, Pam Brown, Paul Brown, Sharon Brown, Sherrie Brown, Deanna Bunn.





Sandra Buracker, Cathy Burnham, Cathy Burns, Alice Byrd, Bill Burtness, Marjory Burrup, Dick Burwell, Karen Butler.

Ted Byers, Karen Cardiff, Rosa Lee Carey, Frank Chamberlain, Peggy Chevalier, Mark Childress, Jeff Chilton, Diane Clark.

Linda Cochran, Dave Cogshall, Jim Cole, Thomas Conlec, John Cook, Donna Crawford, Chauncey Crays, Brice Creighton.

William Cunningham, Pat Cuppernell, Randy Cuppernell, Karen Curtis, Debbie Davidson, Carol Davis, Pam Dawson, Angela Delk.

Rose Decker, Mike Divine, Mike Dieter, Debbie Doob, Lee Dooley, Beckie Douglas, Guy Duckworth, Dona Dunn.

Steve Durst, Jim Eagleman, Mykal Eastin, Luan Eberhardt, Charles Eldridge, Lorel Ellsworth, Scott Elsser, Don Emmert.

Pam Emmert, Marsha Enlow, George Faber, Birgit Farchmin, Robert Fatheree, Joyce Ferrell, Meg Fisher, Tad Fisher.

Vanda Folesewski, Susan Foster, Nick Freeman, Terri Frye, Victor Gaines, Bob Gallier, Patty Gartner, Rocco Gibala.

John Gifford, Ardith Girvin, Peggy Glenn, Georgia Goff, Dick Goldstein, Carl Goodman, Jane Gothard, Jean Gothard.

Linda Gravely, Steve Gray, Russell Graybeal, Raymond Green, Glenn Griffith, Sylvia Griffith, Linda Gudget, Vicki Halberstadt.

Peggy Hale, Ardith Hanson, Emily Hanson, Laura Harkness, Sandy Harlow, Terry Harneson, Paul Harmon, Edward Harvey.

Lee Harvey, Nick Hastings, Carrol Hatter, Kate Hendricks, Gordon Herbert, Sherlee Hill, Glen Hiltbran, Scott Holiday.

Rick Houser, Dottie Hoyt, Scott Hubbard, Connie Humes, Steve Hunt, Woody

Harry Jackson, David Jan, Sigrid Johansen, Ann J Johnson, Ken Johnson, Lar

Larry Johnson, Linda J Jones, Patty Jones, Roge Jordan, Ann Kamman, Cher

Jim Kelly, Peggy Kelsey, ball, Cinda Kimbrell, Dou Kohn, Ed Kuester, Jean Ku

Mike Lacer, Terry Langend mare, Dave Larson, John nie Law, Marvin Lee. Steve I

Rhoda Lemmon, David Loc Lowry, Jerry Lyman, Cynth Delores Marlock, Irene Ma Marshall.

Stuart Martin, Chris Maurall, Terry Mayfield, William McCall, Leroy McCall, Don

Don McIntyre, Robert McMillan, Deborah McNeil haffey, Donna Merridith, Di Barb Miller

Eunice Mitchell, Norma Mj elle Moake, Sherri Moore, I Terry Moore, Rodney M Mumm.

Linda Muse, Julia Nance, Darlene Nelson, Steve Ne Nichols, Melinda Nunley, Pat

Benny Olaivar, Turea Oli Palmisano, Gale Palsey, P Melinda Parker, Scott Park Pelmore.

Betsy Pendleton, Jack Peter Petersen, Mike Pettyjohn, B Betty Phillips, Beverly Phil Phillips.

ker, Cathy Burnham, Cathy Byrd, Bill Burness, Marjory Burwell, Karen Butler.

Karen Cardiff, Rosa Lee Chamberlain, Peggy Chevachidress, Jeff Chilton, Diane

in, Dave Cogshall, Jim Cole, niece, John Cook, Donna sauncey Crays, Brice Creigh-

nningham, Pat Cuppernell, ernel, Karen Curtis, Debbie Carol Davis, Pam Dawson,

Mike Divine, Mike Dieter, Lee Dooley, Beckie Douglas, rth, Dona Dunn.

Jim Eagleman, Mykal Eastin, rdt, Charles Eldridge, Lorel ott Elsser, Don Emmert.

rt, Marsha Enlow, George Farchmin, Robert Fatheree, Meg Fisher, Tad Fisher.

sewski, Susan Foster, Nick rri Frye, Victor Gaines, Bob Gartner, Rocco Gibala.

rd, Ardith Girvin, Peggy rgia Goff, Dick Goldstein, an, Jane Gothard, Jean Goth-

ly, Steve Gray, Russell Gray-son, Glenn Griffith, th, Linda Gudgel, Vicki Hal-

Ardith Hanson, Emily Han-kness, Sandy Harlow, Terry Paul Harmon, Edward Har-

Nick Hastings, Carrol Hat-Hendricks, Gordon Herbert, Glen Hiltbran, Scott Holi-

Rick Houser, Dottie Hoyt, Jane Hubbard, Scott Hubbard, Connie Huber, Brad Humes, Steve Hunt, Woody Iles.

Harry Jackson, David Janov, Julie Jensen, Sigrid Johansen, Ann Johnson, Chris Johnson, Ken Johnson, Larry A. Johnson.

Larry Johnson, Linda Johnson, Essie Jones, Patty Jones, Roger Jones, Tom Jordan, Ann Kamman, Cheryl Kelker.

Jim Kelly, Peggy Kelsey, Roxann Kimball, Cinda Kimbrell, Doug Koch, Perry Kohn, Ed Kuester, Jean Kummerow.

Mike Lacer, Terry Langendorf, Rick Larimore, Dave Larson, John Lasater, Bonnie Law, Marvin Lee, Steve Leithleiter.

Rhoda Lemmon, David Lockard, Richard Lowry, Jerry Lyman, Cynthia Malmstadt, DeJores Marlock, Irene Marriott, Stephen Marshall.

Stuart Martin, Chris Maurer, Phil Mayall, Terry Mayfield, William Maze, Gary McCall, Leroy McCall, Donna McCrady.

Don McIntyre, Robert McInvale, Patricia McMillan, Deborah McNeil, Kathy McHaffey, Donna Merridith, Dan Merrifield, Barb Miller.

Eunice Mitchell, Norma Mitchell, Michelle Moake, Sherri Moore, Peggy Moore, Terry Moore, Rodney Moseley, Steve Mumm.

Linda Muse, Julia Nance, Paul Nance, Darlene Nelson, Steve Neucks, Cathy Nichols, Melinda Nunley, Pat O'Connor.

Benny Olaivar, Turea Olaivar, Chris Palmisano, Gale Palsey, Peggy Paris, Melinda Parker, Scott Parker, Sylvester Pelmore.

Betsy Pendleton, Jack Petersen, JoAnn Petersen, Mike Pettyjohn, Bill Phillips, Betty Phillips, Beverly Phillips, Karen Phillips.





Geoffrey Poor, John Poulos, Jim Primmer, Paul Raney, Lynn Rannebarger, Kathy Remesch, Marc Renfrew, William Renfro.

Teresa Reuter, Brad Reynolds, Larry Rhoades, Pamela Rice, Laura Riney, Bob Rowe, Gary Runyan, Mary Ann Saddoris.

Jean Sadorus, Sharon Schiff, Kathleen Scoles, Melinda Schreiber, Fred Schrumpl, Judy Scott, Kitty Scott, Ken Sensenbrenner.

Yvonne Sergent, Chris Shaw, Kathy Shaw, Stanley Shaw, Vicki Shepherd, Dan Sherrod, Barbara Shiver, Susan Siler.

John Skadden, Dennis Skinner, Susan Stottow, Daniel Smith, Merideth Smith, Nancy Smith, Ron Smith, Stephen Smith.

MaryAnn Snyder, David Spangler, Glen'na Spitze, Charles Stanley, Lynn Stanley, Joyce Starr, Geoffrey Stippes, Elgin Summerfelt.

Stan Syfert, Larry Tabeling, Charlene Tatum, Alan Taylor, Billy Taylor, Cheryl Terry, Albert Thatison, Jeff Thomas.

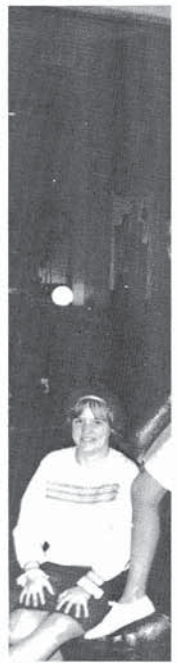
MaryAnn Thomas, Sue Tibbetts, Phillip Tinsley, Larry Trinkle, Kathy Turner, Cynthia Utley, Joseph Valerie, John Vriner.

Nancie Vriner, Connie Wann, Chuck Warwick, Jan Washburn, Roger Watson, Jill Wattenburg, Sandra Weir, Bob Welch.

Donna Weller, Bonnie Wells, Gerald Wells, Marilyn Wertz, Carl Wheatley, Karen White, John Wikoff, Dan Williams.

Arnold Wilson, Morris Wingler, Claudia Winkelhake, James Winston, Pat Wrathner, Sandy Yankwich, Beverly York, Barbara Zeigler.

Burnell Biggers, Curly Bradford, Barbara Cooper, Betty Crook, Stan Dilley, Darrell Dubson, Phil Eberhardt, Sandy Feitshans.



SOPHOMORE CLASS
Chrm.; Lynda Wingler, nard, Pres.

Eric Aldrich, Richard A derson, Gail Anderson, H Lyle Anderson, Steve A Ausubel.

Linda Bair, Steve Bair, Ju Barcus, Danny Bareither, Donald Barrett, Rick Baum

Kathy Bays, Randy Beasley, John Bennett, Criag Birt, Larry Blanton, Joyce I

Linda Bohlen, Janice Boile Charles Bonds, Chris Boni ser, Kris Bradshaw, Mike B

Chris Brash, Frank Brid Brightbill, Pam Broderick Bruce Brown, Clay Brown,

John Poulos, Jim Primaney, Lynn Rannebarger, Marc Renfrew, William

Brad Reynolds, Larry Rice, Laura Riney, Bob Rinyan, Mary Ann Sadoris.

Sharon Schiff, Kathleen Schreiber, Fred Schrumph, Scott, Ken Sensenbrenner.

Chris Shaw, Kathy Shaw, Vicki Shepherd, Dan Sherhiver, Susan Siler.

Dennis Skinner, Susan Smith, Merideth Smith, Ron Smith, Stephen Smith.

David Spangler, Glenarles Stanley, Lynn Stanley, Geoffrey Stippes, Elgin

urry Tabeing, Charlene Tattaylor, Billy Taylor, Cheryl Thaison, Jeff Thomas.

omas, Sue Tibbetts, Phillip Trinkle, Kathy Turner, Joseph Valerine, John

Connie Wann, Chuck Washburn, Roger Watson, Sandra Weir, Bob Welch.

Bonnie Wells, Gerald Wertz, Carl Wheatley, John Wikoff, Dan Wil-

Morris Wingler, Claudia James Winston, Pat Wrather, Beverly York, Barbara

Curly Bradford, Barbara Crook, Stan Dilley, Darrell Bernhardt, Sandy Feishans.



SOPHOMORE CLASS OFFICERS—Bottom Row: Rhea Licht, Publicity Chrm.; Lynda Wingler, Secy.; Julie Murphy, Treas. Top Row: Guy Maynard, Pres.

Sophomores Continue to Commute

The class of '68 was led by president, Guy Maynard; vice president, Tom Moyer; secretary, Lynda Wingler; treasurer, Julie Murphy; and publicity chairman, Rhea Licht.

They, like last year's sophomores, trudged to the Junior High for many of their classes. They were completely "high school" in their energetic money raising projects, including two bake sales and a spaghetti supper. All were successes and will help to pay for next year's homecoming float and Junior-Senior Prom.

Eric Aldrich, Richard Allen, Beth Anderson, Gail Anderson, Harrie Anderson, Lyle Anderson, Steve Anderson, Laura Ausubel.

Linda Bair, Steve Bair, Judie Baker, Pam Barcus, Danny Bareither, Wilma Barnett, Donald Barrett, Rick Bauman.

Kathy Bays, Randy Beasley, Markey Beckrum, John Bennett, Crieg Bentley, Denny Birt, Larry Blanton, Joyce Bohlen.

Linda Bohlen, Janice Boilet, Linda Bolten, Charles Bonds, Chris Bonner, Bruce Bowser, Kris Bradshaw, Mike Brandhost.

Chris Brash, Frank Bridgewater, David Brightbill, Pam Broderick, Billie Brown, Bruce Brown, Clay Brown, Mary Brown.





Claudia Brownfield, Luther Bryant, Ron Butler, Gary Butts, Cheryl Byers, Dale Calder, Steve Campbell, Sue Campbell.

Marilyn Hensley, Thomas Herron, Vicki Hewkin, J. Ford Hines, Robert Hinkley,

Tom Campbell, Dave Cantrell, Rick Carlyle, Bob Carpenter, Tom Carson, Morris Carwile, Kay Casey, Becky Clark.

Lynnette Houk, Connie Hulsizer, Roger Humes, craft, Gordon Hutchens, Sharon Irwin.

Howard Clark, Mike Crawford, Linda Crist, Richard Coad, Joe Coats, Tedi Cogshall, Tom Corzine, Ron Coster.

Dwight Isenhower, Barbara Jackson, Terry Jackson, Bob Jenkins, Edward Jessu,

Mona Covert, Kathy Curry, Roger Dalton, Wanda Dart, Janice Davis, Peggy Davis, Deanna Deck, Mike Deck.

Joyce Jewell, Jim Johnson, Kristin Johnson, Bruce Jon, Pearlene Jones, Ron Jordan.

Jim DeHaven, Sherry DeHaven, Bette DeWitte, Maarten DeWitte, Tom Dickinson, Lew Diggs, Dave Dilley, Carol A. Douglas.

Conna Judy, Glenn Karr, Ji Keller, Kim Keller, Jim I Ann King, Bill Kirby.

Carol S. Douglas, Leann Douglas, Linda Drummond, Frances Dubson, Gaye Dunn, Anita D'Urso, Jim D'Urso, David Dye.

John Koch, Kay Kummere Don Kurtz, Freddie Kyse, Karla Lancaster, Loretta La

Mark Ellis, Brad Englehart, Larry Ervin, Stephen Farmer, Lee Feldman, Cynthia Fieldbinder, Melissa Filbey, Steve Forbes.

Margie La Valle, David Licht, Ron Lillard, Ri Tommy Logan, Mark Lot Luck.

Greg Foster, Geoffry Francis, Cheryl Franklin, Kathy Franklin, Rita Franklin, JoAnne Freeman, Jim French, Adrian Freund.

Marsha Lutter, Pat Lynn, Bob Marlin, Katherine Mar Maxwell, Bill May, Chuck N

Wes Furumoto, Steve Gerdemann, Susan Gilbert, John Gilliland, Tom Gilmore, Julie Ginze, Lenore Glaser, Jim Gray.

Dave Mayfield, Guy Ma Maze, Janie McArthur, Pl Norlyn McCormick, Ter Steve McNattin.

Terry Green, Brenda Grob, Steve Goglia, Morris Golladay, Ann Goodman, Leslie Gordon, Bill Gulley, Donny Hacker.

Bonnie McPherson, Conni Nancy Meade, Randy M Mitchell, Bill Mock, Kathy Moore.

Donald Hamm, Barb Hansen, Betsy Hanson, Cecil Harmon, Tom Harnsberger, Tracy Harper, Daryl Harsha, Darrel Hart.

Roy Moore, David Morris Julia Murphy, Ann Mussey Susan Nally, David Nance.

Terry Harvey, Gary Hawk, Rick Hawn, Bill Hedrick, Mary Heintz, Kerrie Henderson, Larry Henderson, Valerie Henderson.

Lanny Nesmith, Larry Ne Nugene, Cathy Odum, Ton Paden, Jackie Page, Earl Pa

Luther Bryant, Ron
Cheryl Byers, Dale
Bill, Sue Campbell.

Dave Cantrell, Rick
Tom Carson,
y Casey, Becky Clark.

Ike Crawford, Linda
Joe Coats, Tedi Cog-
Ron Coster.

by Curry, Roger Dal-
Janice Davis, Peggy
Mike Deck.

erry DeHaven, Bette
DeWitte, Tom Dickin-
Dave Dilley, Carol A.

Leann Douglas, Linda
Dobson, Gaye Dunn,
n D'Urso, David Dye.

Engelhart, Larry Ervin,
Lee Feldman, Cynthia
a Filbey, Steve Forbes.

oeffry Francis, Cheryl
Franklin, Rita Franklin,
Jim French, Adrian

Steve Gerdemann, Susan
Lilland, Tom Gilmore,
e Glaser, Jim Gray.

renda Grob, Steve Gog-
day, Ann Goodman, Les-
sulley, Donny Hacker.

Barb Hansen, Betsy Han-
non, Tom Harnsberger,
Daryl Harsha, Darrel

Jary Hawk, Rick Hawn,
ry Heintz, Kerrie Hender-
erson, Valerie Henderson.

Marilyn Hensley, Thomas Herget, Don
Herron, Vicki Hewkin, Jim Hill, Clif-
ford Hines, Robert Hinkley, David Hittle.

Lynnette Houk, Connie Hoyt, Debby
Hulsizer, Roger Humes, Debbie Hutch-
craft, Gordon Hutchens, Marilyn Iles,
Sharon Irwin.

Dwight Isenhower, Barbara Iverson, Lin-
da Jackson, Terry Jackson, Kathy Jacobs,
Bob Jenkins, Edward Jessu, Joy Jewell.

Joyce Jewell, Jim Johnson, Ken Johnson,
Kristin Johnson, Bruce Jones, Linda Jones,
Pearlene Jones, Ron Jordan.

Conna Judy, Glenn Karr, Judy Keeler, Ed
Keller, Kim Keller, Jim Kincaid, Mary
Ann King, Bill Kirby.

John Koch, Kay Kummerow, Ray Kunza,
Don Kurtz, Freddie Kyse, Gail Lambdin,
Karla Lancaster, Loretta Law.

Margie La Valle, David Lemke, Rhea
Licht, Ron Lillard, Rick Lincicome,
Tommy Logan, Mark Long, Marguerita
Luck.

Marsha Lutter, Pat Lynn, Judy March,
Bob Marlin, Katherine Marquardt, Wayne
Maxwell, Bill May, Chuck May.

Dave Mayfield, Guy Maynard, Donald
Maze, Janie McArthur, Phyllis McCann,
Norlyn McCormick, Terri McLennan,
Steve McNattin.

Bonnie McPherson, Connie McPherson,
Nancy Meade, Randy Middleton, Erik
Mitchell, Bill Mock, Kathy Molek, Mary
Moore.

Roy Moore, David Morris, Tom Moyer,
Julia Murphy, Ann Mussey, Paula Myers,
Susan Nally, David Nance.

Lanny Nesmith, Larry Newman, Sharon
Nugene, Cathy Odom, Tom Oliver, Doug
Paden, Jackie Page, Earl Payne.





Melody Peacock, Steve Pelmore, Robert Perry, John Pettigrew, Eric Pond, Ralph Poore, Gary Porter, Larry Porter.

Pat Walsh, Mary Ward, W Mark Warwick, John W Weaver, Ardell Webb, Rita V

Brenda Potts, Cindy Pratheg, Chris Rahn, Bette Ramstadt, Emily Regnier, David Reiner, Bill Reiss, Ginny Reuter.

Rosalie Weeks, Sally Weeks, man, David Westwater, Y Tonita White, Kathy W Wikoff.

Roger Richardson, Chariste Roberson, Glenda Roberts, Bill Robertson, Daniel Roney, Elaine Rorer, Peggy Rosenberger, Danny Ross.

Joan Wikoff, Mike Wilborn, kinson, Chuck Williams, O David Willis, Janet Willis, C

David Ross, Larry Ross, Ronald Rudcil, Terry Ruppel, Anita Rush, Diana Rush, Frances Sarnecki, Frank Sawyer.

Georgia Wilson, Lynda V Winkelman, Adrienne Wolf, Gloria Woods, Joyce Woo Woodworth.

Henry Sayles, Elaine Scheffler, Dorothy Schlatter, Joy Schroeder, JoAnne Schwartz, Phil Scott, Robert Scott, Debbie Seth.

John Woolridge, Sheila Zeigler, Bill Adams, Ron B Carey, Marjorie Caviness, C

Barb Seyler, Tom Seymore, Laurie Shannon, Joe Shoemaker, Bob Schotts, Janet Siems, Peggy Siler, Larry Simpson.

Mike Durham, John Eaton, gerald, Richard Frederick, N Kathy Hackett, Betty Joh Jorgenson.

Lynn Simson, Joan Sinclair, Susan Sleeter, Charles Slife, Mary Sliger, Linda Smith, Luvon Smith, Peggy Smith.

Steve Moore, Phyllis Perry, ardsen, Ricky Simpson, S Kitty Squire, Bill Steiner, M

Wendy Smith, Marsha Snead, Cynthia Snearley, Garry Sronce, Bob Starr, Susan Stein, Scott Stephen, Sam Stern.

Bob White.

Larry Stirewalt, Connie Stout, John Street, Gary Sullivan, Anita Summit, Bill Sutton, Jeff Sutton, Sandra Swann.

Eric Swenson, Julie Swenson, David Taber, Pete Taylor, Rodney Taylor, Catherine Thadison, Julia Theobald, Barbara Thomas.

Mike Frederick, Betty Gral Hamilton, Ray Jenkins, F Marcia Leonard, Susie Muller sen.

David Thompson, Martha Thornberry, Barb Tiebout, Harry Tiebout, Peter Titus, John Tomlinson, Bob Trinkle, Betty Turner.

Kris Overholt, Keith Paris, Lau William Quillinan, Laurie St Wingle.

Jacquelyn Turner, Stephen Van Arsdell, David Vaught, Dan Veach, Janice Venable, Stuart Vyse, Sherri Walden, Marsha Walsh.

cock, Steve Pelmore, Robert Pettigrew, Eric Pond, Ralph Porter, Larry Porter.

s, Cindy Prather, Chris Rahn, stadt, Emily Regnier, David Reiss, Ginny Reuter.

ardon, Chariste Roberson, erts, Bill Robertson, Daniel ne Rorer, Peggy Rosenberger,

Larry Ross, Ronald Rudicil, el, Anita Rush, Diana Rush, ecki, Frank Sawyer.

es, Elaine Scheffler, Dorothy y Schroeder, JoAnne Schwart, ibert Scott, Debbie Seth.

Tom Seymore, Laurie Shan- hoemaker, Bob Schotts, Janet y Siler, Larry Simpson.

n, Joan Sinclair, Susan Sleeter, c, Mary Sliger, Linda Smith, v, Peggy Smith.

ith, Marsha Snead, Cynthia arry Sronce, Bob Starr, Susan Stephen, Sam Stern.

ewalt, Connie Stout, John y Sullivan, Anita Summit, Bill Sutton, Sandra Swann.

on, Julie Swenson, David Tab- ylor, Rodney Taylor, Catherine Julia Theobald, Barbara

mpson, Martha Thornberry, ut, Harry Tiebout, Peter Titus, linson, Bob Trinkle, Betty

Turner, Stephen Van Arsdell, ght, Dan Veach, Janice Ven- t Vyse, Sherri Walden, Marsha

Fat Walsh, Mary Ward, Wanda Warren, Mark Warwick, John Washer, Blake Weaver, Ardell Webb, Rita Webb.

Rosalie Weeks, Sally Weeks, David Werk- man, David Westwater, Mark Wetzel, Tonita White, Kathy Whitson, Ellen Wikoff.

Joan Wikoff, Mike Wilborn, Sheryl Wil- kinson, Chuck Williams, Ollie Williams, David Willis, Janet Willis, Cindy Wilson.

Georgia Wilson, Lynda Wingler, Gail Winkleman, Adrienne Wolf, Mike Wood, Gloria Woods, Joyce Woods, Christine Woodworth.

John Woolridge, Sheila Wright, Bob Zeigler, Bill Adams, Ron Blakey, Willie Carey, Marjorie Caviness, Carol Dorsey.

Mike Durham, John Eaton, Laurie Fitz- gerald, Richard Frederick, Nancy Gullion, Kathy Hackett, Betty Johnson, Mary Jorgenson.

Steve Moore, Phyllis Perry, Lottie Rich- ards, Ricky Simpson, Svea Smith, Kitty Squire, Bill Steiner, Mike Stewart.

Bob White.

Mike Frederick, Betty Graham, Anita Hamilton, Ray Jenkins, Robin Lee, Marcia Leonard, Susie Mullen, Chris Ol- sen.

Kris Overholt, Keith Paris, Laura Proctor, William Quillinan, Laurie Sronce, Gary Wingler.



Junior Re-Takes





Miss Nancy Bowser
Homecoming Queen—1965

McCandless

OF URBANA

Studio of Photography

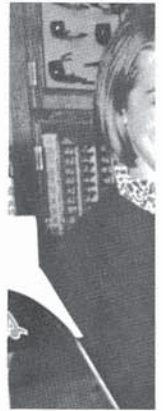
900 S. Race St.
Urbana, Ill. 61801

Area 217
3670841



CAMP

Fresh S





OF URBANA

rea 217
570841



CAMPUS SPUDNUT SHOP

513 S. Goodwin

Urbana

Fresh Spudnuts on the Campus

FORESTRY BEAUTY SALON

Evening Hours for Busy Beauties
803 S. Lincoln Urbana
Ph. 344-1417

Best Wishes—Class of '66

CENTRAL FINANCE & LOANS

304 S. Neil

Champaign

FRITZ FLOWER SHOP

Five Points, Urbana
Phone 367-8476



McBRIDE'S DRUGS INC.

Champaign and Urbana



Miss Nancy Bowser
Homecoming Queen—1965

McCandless

OF URBANA

Studio of Photography

900 S. Race St.
Urbana, Ill. 61801

Area 217
3670841



CAMP

Fresh S

