

*Thank you to the Harvest
Tea Committee and to all
who helped in any
capacity.*

Committee:

Patricia Lewis, Coordinator

Ave Alvarado

Henrine Casey

Ezell Derricks

Gloria Dixon

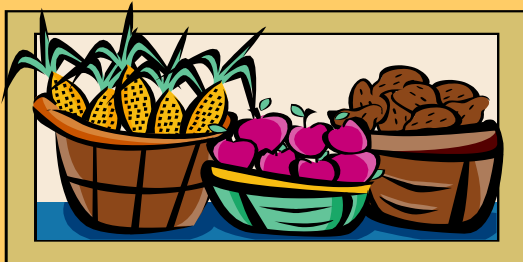
Cle Easley

Mae Kendrick

Jan Thomas

Patricia Walker

Nathan Wallick, Emeritus



Program Designer : Patricia McKinney Lewis

***St. Luke CME Church's
Centennial
17th Annual Harvest Tea
Sponsored by the Steward Board***

October 25, 2009

3:30 PM

Matthew 9 :37-38

³⁷"Then saith he unto his disciples, The harvest truly is plenteous, but the labourers are few;"

³⁸"Pray ye therefore the Lord of the harvest, that he will send forth labourers into his harvest. "

***"Without Action,
Love is Just a Theory"***



Patricia M. Lewis, Steward Board Chairman

Rev. Dr. Clarence Buchanan, Pastor

Elder Harlan K. Jones, Presiding Elder

Bishop Paul A. Stewart, Presiding Prelate



St. Luke Christian Methodist Episcopal Church (Circa 1914-1919)

Rev. W.T. Whittsitt, Pastor 1912-1919

The site on which this building sits was purchased in 1914.



St. Luke C.M.E. Church

Chicago, Illinois 60620 Phone: 312-356-1111

THANK YOU!

The members of the Steward Board sincerely thank you for supporting St. Luke's Centennial Harvest Tea.

We hope you have been blessed by our worship and praise for God's bountiful blessings today and everyday. May you continue to be abundantly blessed with God's grace, mercy and everlasting love. A special thank you to Donna Tinsley for her help in decorating the lower level.



Boards, Clubs and Auxiliaries

Stewardess Board

Trustee Board

Missionary Society

Board of Christian Education

History Club

Men's Fellowship

New Life Choir

Sr. Usher Board

Kennedy Club

E.P. Murchison

Steward Board



*Welcome To Our
Centennial Harvest Tea!*



Steward Board

Patricia McKinney Lewis, Chairman

Gloria Dixon, Vice Chairman

Mae Kendrick, Secretary-Treasurer

Patricia Walker, Chaplin

Ave Alvarado, Recording Steward

Members:

Ezell Derricks, Henrine Lockett-Casey,

Cle Easley, Jan Thomas,

Nathan Wallick (Emeritus)



Our Pastor and First Lady

Our Pastor and First Lady

Rev. Dr. Clarence and Mrs. Christine Buchanan



Centennial Banquet
May 23, 2009



Pre-Anniversary Program
July 5, 2009

Special Living Angels



Sis. Hattie Hicks
Singing "The Lord's Prayer" at every Harvest Tea since 2000.



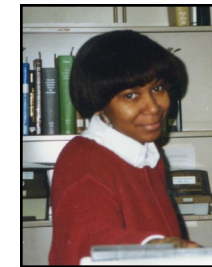
Sis. Jean Nesbitt
Sharing her talents by decorating our church.



Sis. Donna Tinsley
Sharing her talents by decorating our church.



Sis. Nina Sibley
Sharing her harvest of vegetables with many families.



Sis. Fay Weatherspoon
Sharing her talents with our youth.



Bro. Ben Walton
Painting and cleaning the church for many years without charging a fee.



Min. Phillip March
Making sure the church is secure after each worship service.



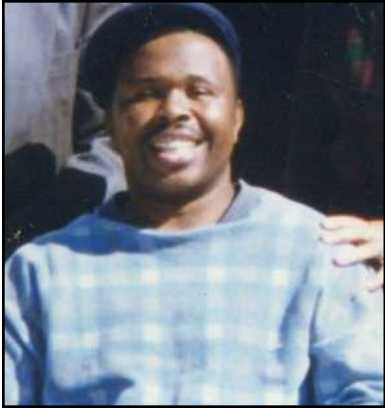
Sis. Ceola Kinard
Making sure the sanctuary is decorated with fresh flowers.



Bro. Syral Easley
Providing electrical work, maintaining the church and starting the van ministry.

ፕላን ለሰው ጤና ጥራት

Centennial Memorial Angel



Brother Vincent Townsend
Devoted and Dedicated Service

Centennial Living Legend

ፍጥረት ለሰው ጤና ጥራት



Sister Jo Samuel
Devoted and Dedicated Service



History

The Harvest Tea began in 1990 by Rev. John Deron Johnson. The first Harvest Tea was held at the Douglass Center. The following members have served as the chairperson of the Harvest Tea: Bertha Williams, Donna Tinsley, Kathy Lockett, Belle Miller, Jacqui Davis and

Rosalind Mason Minor.

Locations for the Harvest Tea moved from the Douglass Center to the Douglass Center Annex, and then to the Urbana Civic Center. The tea continued under Rev. Roland Brown, but was not held during the years 1997-1999.

In the year 2000, Sister Patricia Lewis decided to bring back the tea as a contest among the boards and clubs of the church and to highlight the many gifts and talents in St. Luke. The tea is also known as “The Taste of St. Luke”, as the food evolved from serving finger food to a “Soul Food Tea”.

This year, St. Luke members are being recognized as **Centennial Living Legends** or **Centennial Memorial Angels** for their devotion and dedication to their respective Boards/Auxiliaries over the years.

The title of King/Queen of the Harvest Tea has been held by the following Boards/Auxiliaries:

- 2004: Men’s Fellowship—King William Nesbitt,
 - 2004: New Life Choir—Queen Patricia Walker
 - 2005: Senior Usher Board—Queen Joyce Cowan
 - 2006, 2007 & 2008: New Life Choir—Queen Patricia Walker
- Who will wear the crown this year?

Who Will Be Our Centennial King or Queen?



Centennial Harvest Tea Dedication



St. Luke's Harvest Tea 2009 is dedicated to the memory of **Mrs. Bertha Williams**. She was a faithful member of the Usher Board and chaired the Pastor's Aide Board. Mrs. Bertha Williams sponsored a table at the very first Harvest Tea held in 1990 at Douglass Center. She also chaired the tea one year after its inception. This year's tea is dedicated to her memory for her steadfast devotion to St. Luke and to the Harvest Tea.



Centennial Memorial Angel



Sister Mary Peppers
Devoted and Dedicated Service

Centennial Living Legend



Sister Gloria Dixon
Devoted and Dedicated Service

W.A.M.E.M. 1950-2000

Centennial Memorial Angel



Sister Margaret Minor
Devoted and Dedicated Service

Centennial Living Legend



Sister Belle Miller
Devoted and Dedicated Service

Harvest Tea
Queen Patricia Ann Walker
New Life Choir



Rev. Dr. Clarence Buchanan Queen Patricia Ann Walker

2008

2007

2006

Centennial Living Legend



Brother Ezell Derricks
Fifty-Two Years of Dedicated Service

Centennial Living Legend



Sister Patricia McKinney Lewis
First Female Steward and Recording Steward;
Recording Steward Twenty-Three Years

Centennial Living Legend



Sister Kathy Lockett
Devoted and Dedicated Service

Centennial Living Legend



Sister Tina March
Devoted and Dedicated Service

Centennial Memorial Angel



Sister Louise Abernathy
Devoted and Dedicated Service

Centennial Living Legend



Brother Willie Summerville
Forty-Three Years of
Devoted and Dedicated Service

Centennial Living Legend



Brother Jan Thomas
Forty-Two Years of Dedicated Service

Centennial Living Legend



Sister Henrine Luckett Casey
Devoted and Dedicated Service

Centennial Memorial Angels



Brother Clarence Williams
Devoted and Dedicated
Service; Recording Steward



Brother John Hannett
Devoted and Dedicated
Service; Recording
Steward

Centennial Living Legend



Brother Nathan Wallick
Devoted and Dedicated Service

Centennial Memorial Angel



Sister Genora Jarrett
Devoted and Dedicated Service

Centennial Memorial Angel



Sister Edna Booker
Devoted and Dedicated Service

Centennial Memorial Angel



Sister Rosie Easley
Devoted and Dedicated Service

Centennial Living Legend



Sister Maxine Brown
Devoted and Dedicated Service

Special Centennial Memorial Angel



Sister Dorothy Jordan Luckey
Founder and Organizer of St. Luke's White House Tea;
Church Treasurer; Fundraiser and First Female Trustee

Centennial Living Legend



Sister Katherine McCutchen
Devoted and Dedicated Service

“Without Action, Love is Just a Theory”

*What seeds are you planting to be harvested
in your life?*

I babysit for that single mother while she studies.

I gave clothing to
those in need.

I am my brother's keeper.

I help feed those who are hungry.

*I have compassion for the less fortunate
by lending a helping hand.*

I gave my seat
to a visitor.

I love my
neighbor.

**I am sharing my clothes with
someone who needs them.**

I gave my seat to a senior citizen.

I gave my
hymnal to a
visitor.

*I am helping a
young person in school.*

I raked leaves for a sick person.

PROGRAMME

“THE LORD’S PRAYER” ...SOLO BY SIS. HATTIE HICKS

SCRIPTURE... SIS. PATRICIA ANN WALKER

WELCOME... SIS. PATRICIA MCKINNEY LEWIS

A TASTE OF ST. LUKE

~~~~HARVEST OF TALENT ~~~~~

Dedication of the Harvest Tea to Mrs. Bertha Williams

Stewardess Board— Reading by Sis. Malinda Wallick

Board of Christian Education—Voices of Praise

Kennedy Club— Reading by Sis. Jennie Sheffield

Usher Board —Song by Amber Parrish

New Life Choir—Song

Missionary Society —Sis. Maxine Brown

Trustee Board—Instrumental Duet by Min. Vernon and
Sis. Felecia Harrington

Steward Board—Song by Bro. Cle Easley

Parade of Boards ~~ Sharing of the Harvest

Crowning of the HARVEST TEA

KING or QUEEN

Invitation to Christian Discipleship: Rev. Buchanan

Remarks: Rev. Buchanan