

*Thank you to the Harvest Tea Committee and to all who helped in any capacity.*

*Committee:*

*Patricia Lewis, Chairman*

*Ave Alvarado*

*Henrine Casey*

*Ezell Derricks*

*Gloria Dixon*

*Cle Easley*

*Mae Kendrick*

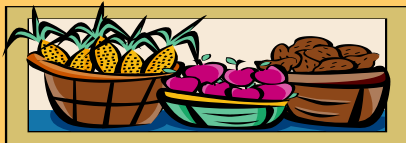
*Brenda Owens*

*Larry Parks*

*Jan Thomas*

*Patricia Walker*

*Nathan Wallick, Emeritus*



Program Designer : Patricia McKinney Lewis

***St. Luke CME Church's  
18th Annual Harvest Tea  
Sponsored by the Steward Board***

**Matthew 9 :37-38**

***37" Then saith he unto his disciples, The harvest truly is plenteous, but the labourers are few;"***

***38" Pray ye therefore the Lord of the harvest, that he will***

***Honor the Lord with your possessions and with the first produce of your entire harvest; then your barns will be completely filled, and your vats will overflow with new wine. Proverbs 3:9-10 (HCSB)***

***“Without Action,  
Love is Just a Theory”***



***Patricia***

***M. Lewis,***

***Steward Board Chairman  
Rev. Dr. Clarence Buchanan, Pastor***

# Our Pastor and First Lady

## Our Pastor and First Lady

Rev. Dr. Clarence and Mrs. Christine Buchanan



*THANK YOU!*

*The members of the Steward Board sincerely*

*thank you for supporting St. Luke's*

*18th Annual Harvest Tea.*

*We hope you have been blessed by our*

*worship and praise for God's bountiful*

*blessings today and everyday. May you*

*continue to be abundantly blessed with God's*

*grace, mercy and everlasting love.*

*A special thank you to Jean N. [unclear] for her help*



*in decorating the lower level*

## Boards, Clubs and Auxiliaries

Stewardess Board

Trustee Board

Missionary Society

Board of Christian Education

History Club

Men's Fellowship

New Life Choir

Sr. Usher Board

Kennedy Club

E.P. Murchison

Steward Board



## Welcome To Our 18th Annual Harvest Tea!



### **Steward Board**

Patricia McKinney Lewis, Chairman

Gloria Dixon, Vice Chairman

Mae Kendrick, Secretary-Treasurer

Patricia Walker, Chaplin

Ave Alvarado, Recording Steward

Members:

Ezell Derricks, Henrine Lockett-Casey,

Cle Easley, Brenda Owens, Larry Parks,

Jan Thomas,

Nathan Wallick (Emeritus)



## *A Message from the Harvest Tea Chairman*



*Sister Patricia McKinney Lewis*

The Board of Stewards has proudly sponsored the Harvest Tea since the year 2000 as its Annual Day. Since that year, we have raised money to subsidize our conference claims which support many missions of the Christian Methodist Episcopal Church. Among them are our institutions of higher learning:

- Lane College
- Miles College
- Paine College
- Phillips School of Theology

Thank you for your continuous support!  
We are proud to be CME!

## Special Living Angels



**Sis. Hattie Hicks**  
Singing "The Lord's Prayer" at every Harvest Tea since 2000.



**Sis. Jean Nesbitt**  
Sharing her talents by decorating our church.



**Sis. Donna Tinsley**  
Sharing her talents by decorating our church.



**Sis. Nina Sibley**  
Sharing her harvest of vegetables with many families.



**Sis. Fay Weatherspoon**  
Sharing her talents with our youth.



**Bro. Ben Walton**  
Painting and cleaning the church for many years without charging a fee.



**Min. Phillip March**  
Making sure the church is secure after each worship service.



**Sis. Ceola Kinard**  
Making sure the sanctuary is decorated with fresh flowers.



**Sis. Carmen Wood**  
Assisting with the youth choir.



**Sis. Kathy Lockett**  
Donating secretarial services to the church.

# Special Living Angels

## Our Future Leaders



## Our Greatest Resource



### Harvest Tea History

The Harvest Tea began in 1990 by Rev. John Deron Johnson. The first Harvest Tea was held at the Douglass Center. The following members have served as the chairperson of the Harvest Tea: Bertha Williams, Donna Tinsley, Kathy Lockett, Belle Miller, Jacqui Davis and Rosalind Mason Minor.

Locations for the Harvest Tea moved from the Douglass Center to the Douglass Center Annex, and then to the Urbana Civic Center. The tea continued under Rev. Roland Brown, but was not held during the years 1997-1999.

In the year 2000, Sister Patricia Lewis decided to bring back the tea as a contest among the boards and clubs of the church and to highlight the many gifts and talents in St. Luke. The tea is also known as "The Taste of St. Luke", as the food evolved from serving finger food to a "Soul Food Tea".

Again this year, St. Luke members are being recognized as **Living Legends** or **Memorial Angels** for their devotion and dedication to their respective Boards/Auxiliaries over the years.

### Who Will Be Our Harvest Tea King or Queen 2010 ?

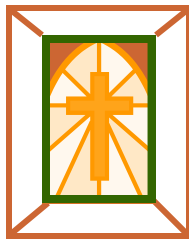




Harvest Tea Dedication  
In Memory of Mrs. Willia Mae Brown



St. Luke's Harvest Tea 2010 is dedicated to the memory of **Mrs. Willia Mae Brown**. As a teen, Mrs. Brown united with St. Luke and sang in the Youth Choir for many years. She was a faithful member of the New Life Choir and was the featured soloist for many songs. Her signature song, among many, was "Oh Happy Day". As the first lady of St. Luke during the years 1993–2000, her interest in music and teaching music to children led her to form the Voices of Praise and Youth of Promise Choirs. At St. Luke, she also served on the Stewardess Board and taught Vacation Bible School.

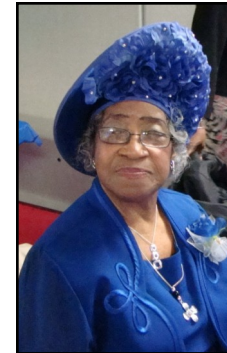


Living Legend



**Sis. Donna Tinsley**  
Devoted and Dedicated Service

Living Legend



**Sis. Belle Miller**  
Devoted and Dedicated Service

2010-05-15-00-00-00

MEMBER SOCIETY

Memorial Angel



Choir Member  
City of Ill.  
New York  
(1969)



**Sis. Willia Mae Brown**  
Devoted and Dedicated Service

Living Legend



**Bro. Willie T. Summerville**  
Forty-Four Years of  
Devoted and Dedicated Service

Harvest Tea  
Centennial Queen Gloria Dixon  
Steward Board

2009



Rev. Buchanan with Centennial Queen Gloria Dixon

2004: Men's Fellowship—King William Nesbitt,  
2004: New Life Choir—Queen Patricia Walker  
2005: Senior Usher Board—Queen Joyce Cowan  
2006, 2007 & 2008: New Life Choir—Queen  
Patricia Walker

Memorial Angel



**Bro. Arzell Chapple**  
Devoted and Dedicated Service

Memorial Angel



**Bro. Armster Jarrett**  
Devoted and Dedicated Service

Living Legend



**Sis. Ether Huffman**  
Devoted and Dedicated Service

Living Legend



**Bro. Syral Easley**  
Devoted and Dedicated Service



Living Legend



**Sis. Thelma Pealer**  
Devoted and Dedicated Service

Memorial Angel



**Sis. Ruth Fonville**  
Devoted and Dedicated Service

Living Legend



**Sis. Malinda Wallick** has been a dedicated member of the Stewardess Board for over twenty years.

As the president of the Stewardess Board, she oversees the preparation for Holy Communion, Baptisms, and the Love Feast.

The Stewardess Board members can be found at church the Saturday before the first Sunday of each month getting ready for one of most important rituals in the Christian Methodist Episcopal Church: Holy Communion. The Stewardess Board is also in charge of providing flowers for the chancel table and arranging the pulpit lectern scarves as well as other duties.

*“Without Action,  
Love is Just a Theory”*

*What seeds are you planting to be harvested  
in your life?*

*I babysit for a single mother while she studies.*

*I am my brother's keeper.*



Missionary Society  
providing Thanksgiv-  
ing baskets.

I helped students  
pay for their  
books.

*I help feed those who are hungry.*

Evangelism Team  
providing hot meals to  
the homeless.

Women's Missionary  
Society sharing  
lunch with home  
bound members.

*I have compassion for the less fortunate  
by lending a helping hand.*

*I am sharing my clothes with  
someone who needs them.*

*I gave my seat to a senior citizen.*

I gave my  
hymnal to a  
visitor.

*I am helping a  
young person in school.*

Women's Fellowship  
Community Outreach

*I raked leaves for a sick person.*

PROGRAMME

“THE LORD’S PRAYER” ...SOLO BY SIS. HATTIE HICKS

SCRIPTURE... SIS. PATRICIA ANN WALKER

WELCOME... SIS. AVE ALVARADO

~ ~ ~ DEDICATION OF CHAIRS ~ ~ ~

A TASTE OF ST. LUKE

~ ~ ~ ~ HARVEST OF TALENT ~ ~ ~ ~

Dedication of the Harvest Tea to Mrs. Willia Mae Brown

Min. Noah Brown and New Life Choir—Song  
Stewardess Board— Reading by Sis. Malinda Wallick

Usher Board —Song by Amber Parrish

Missionary Society and Kennedy Club—

Reading by Sis. Jennie Sheffield

Trustee Board—Instrumental Duet by Rev. Vernon and

Sis. Felecia Harrington

Steward Board—Song by Nancy and Victor Mullins

~ ~ ~ Intermission to Move to Sanctuary ~ ~ ~

Young Adult Fellowship, Men’s Ministry and Women’s

Fellowship—Skit

Board of Christian Education—Praise Dancers

*Parade of Boards ~ ~ Sharing of the Harvest*

Crowning of the HARVEST TEA

KING or QUEEN

Invitation to Christian Discipleship: Rev. Buchanan

Remarks: Rev. Buchanan